



EQT (Chevron Data) 02-13-21

Marshall County, WV Chevron

Hicks

Hicks M10H

Main

Design: Hicks M10H As Drilled

Standard Survey Report

01 September, 2021



EQT
Survey Report

Database:	EDM_Definitive	Local Co-ordinate Reference:	Well Hicks M10H
Company:	EQT (Chevron Data) 02-13-21	TVD Reference:	KB@25 @ 1165.000usft
Project:	Marshall County, WV Chevron	MD Reference:	KB@25 @ 1165.000usft
Site:	Hicks	North Reference:	True
Well:	Hicks M10H	Survey Calculation Method:	Minimum Curvature
Wellbore:	Main		
Design:	Hicks M10H As Drilled		

Project Marshall County, WV Chevron

Map System:	US State Plane 1983	System Datum:	Mean Sea Level
Geo Datum:	North American Datum 1983		
Map Zone:	West Virginia Northern Zone		

Site Hicks

Site Position:		Northing:	501,990.520 usft	Latitude:	39.87
From:	Map	Easting:	1,626,568.660 usft	Longitude:	-80.72
Position Uncertainty:	0.000 usft	Slot Radius:	13-3/16 "	Grid Convergence:	-0.7770 °

Well Hicks M10H

Well Position	+N/-S	0.000 usft	Northing:	501,938.050 usft	Latitude:	39.8717059
	+E/-W	0.000 usft	Easting:	1,626,610.050 usft	Longitude:	80.7181469°W
Position Uncertainty		0.000 usft	Wellhead Elevation:	usft	Ground Level:	1,140.000 usft

Wellbore Main

Magnetics	Model Name	Sample Date	Declination (°)	Dip Angle (°)	Field Strength (nT)
	IGRF2000	12/31/2004	-8.3888	68.2198	53,863.99092437

Design Hicks M10H As Drilled

Audit Notes:

Version:	1.0	Phase:	ACTUAL	Tie On Depth:	0.000
Vertical Section:		Depth From (TVD) (usft)	+N/-S (usft)	+E/-W (usft)	Direction (°)
		0.000	0.000	0.000	312.287

Survey Program Date 9/1/2021

From (')	To (usft)	Survey (Wellbore)	Tool Name	Description
0.00	1,165.000	SDI Gyro (Main)	SDI Standard Keeper 104	Standard Wireline Keeper ver 1.0.4
0.00	21,310.000	MWD (Main)	MWD c	MWD - Standard c

Survey

Measured Depth (usft)	Inclination (°)	Azimuth (°)	Vertical Depth (usft)	Subsea Depth (usft)	+N/-S (usft)	+E/-W (usft)	Vertical Section (usft)	Dogleg Rate (°/100usft)	Build Rate (°/100usft)	Turn Rate (°/100usft)
0.000	0.000	0.000	0.000	-1,165.000	0.000	0.000	0.000	0.00000	0.00000	0.00000
101.000	0.340	123.500	100.999	-1,064.001	-0.165	0.250	-0.296	0.33663	0.33663	0.00000
126.000	0.400	163.040	125.999	-1,039.001	-0.290	0.337	-0.444	1.02636	0.24000	158.16000
151.000	0.440	190.600	150.998	-1,014.002	-0.468	0.345	-0.570	0.81527	0.16000	110.24000
176.000	0.240	197.740	175.998	-989.002	-0.612	0.311	-0.642	0.81621	-0.80000	28.56000
201.000	0.230	214.740	200.998	-964.002	-0.703	0.267	-0.670	0.28068	-0.04000	68.00000
226.000	0.150	141.420	225.997	-939.002	-0.770	0.259	-0.709	0.94314	-0.32000	-293.2800
										0



EQT
Survey Report

Database:	EDM_Definitive	Local Co-ordinate Reference:	Well Hicks M10H
Company:	EQT (Chevron Data) 02-13-21	TVD Reference:	KB@25 @ 1165.000usft
Project:	Marshall County, WV Chevron	MD Reference:	KB@25 @ 1165.000usft
Site:	Hicks	North Reference:	True
Well:	Hicks M10H	Survey Calculation Method:	Minimum Curvature
Wellbore:	Main		
Design:	Hicks M10H As Drilled		

Survey

Measured Depth (usft)	Inclination (°)	Azimuth (°)	Vertical Depth (usft)	Subsea Depth (usft)	+N/-S (usft)	+E/-W (usft)	Vertical Section (usft)	Dogleg Rate (°/100usft)	Build Rate (°/100usft)	Turn Rate (°/100usft)
251.000	0.210	116.540	250.997	-914.003	-0.816	0.320	-0.786	0.38878	0.24000	-99.52000
276.000	0.370	136.660	275.997	-889.003	-0.895	0.416	-0.910	0.74922	0.64000	80.48000
301.000	0.420	135.150	300.996	-864.003	-1.019	0.536	-1.082	0.20427	0.20000	-6.04000
326.000	0.490	137.750	325.996	-839.004	-1.163	0.673	-1.280	0.29185	0.28000	10.40000
351.000	0.550	124.100	350.995	-814.005	-1.309	0.844	-1.505	0.54879	0.24000	-54.60000
376.000	0.490	143.240	375.994	-789.006	-1.462	1.008	-1.729	0.73097	-0.24000	76.56000
401.000	0.500	140.060	400.993	-764.007	-1.631	1.142	-1.942	0.11693	0.04000	-12.72000
426.000	0.440	135.830	425.992	-739.008	-1.784	1.278	-2.146	0.27709	-0.24000	-16.92000
451.000	0.450	166.270	450.991	-714.009	-1.948	1.369	-2.323	0.93538	0.04000	121.76000
461.000	0.450	165.760	460.991	-704.009	-2.024	1.388	-2.389	0.04005	0.00000	-5.10000
568.000	0.570	171.320	567.987	-597.013	-2.958	1.571	-3.152	0.12118	0.11215	5.19626
661.000	0.750	172.930	660.980	-504.020	-4.019	1.716	-3.974	0.19455	0.19355	1.73118
756.000	1.080	178.980	755.968	-409.032	-5.531	1.808	-5.060	0.36147	0.34737	6.36842
787.000	1.100	179.540	786.963	-378.037	-6.121	1.816	-5.462	0.07310	0.06452	1.80645
881.000	1.110	191.010	880.945	-284.055	-7.917	1.649	-6.547	0.23516	0.01064	12.20213
976.000	1.740	233.010	975.918	-189.082	-9.688	0.322	-6.756	1.24055	0.66316	44.21053
1,069.000	2.740	267.670	1,068.849	-96.151	-10.628	-3.027	-4.911	1.76402	1.07527	37.26882
1,165.000	3.840	288.630	1,164.693	-0.307	-9.694	-8.367	-0.333	1.67995	1.14583	21.83333
1,293.000	3.780	289.870	1,292.410	127.410	-6.891	-16.396	7.493	0.07963	-0.04688	0.96875
1,384.000	4.520	286.210	1,383.171	218.171	-4.870	-22.660	13.487	0.86330	0.81319	-4.02198
1,509.000	5.050	290.250	1,507.735	342.735	-1.591	-32.552	23.011	0.50221	0.42400	3.23200
1,571.000	4.990	289.010	1,569.498	404.498	0.232	-37.661	28.017	0.19998	-0.09677	-2.00000
1,634.000	5.220	289.630	1,632.248	467.248	2.087	-42.951	33.179	0.37543	0.36508	0.98413
1,696.000	4.230	277.080	1,694.038	529.038	3.316	-47.877	37.650	2.29968	-1.59677	-20.24194
1,790.000	3.150	247.910	1,787.850	622.850	2.772	-53.711	41.600	2.26718	-1.14894	-31.03192
1,883.000	3.530	239.150	1,880.692	715.692	0.343	-58.537	43.535	0.68305	0.40860	-9.41936
1,915.000	3.330	239.530	1,912.635	747.635	-0.633	-60.183	44.097	0.62902	-0.62500	1.18750
2,008.000	2.360	228.180	2,005.520	840.520	-3.280	-63.938	45.094	1.20125	-1.04301	-12.20430
2,108.000	1.370	258.070	2,105.468	940.468	-4.900	-66.643	46.004	1.35646	-0.99000	29.89000
2,197.000	1.200	286.610	2,194.446	1,029.446	-4.853	-68.577	47.466	0.73540	-0.19101	32.06742
2,286.000	0.960	281.540	2,283.430	1,118.430	-4.438	-70.200	48.947	0.29000	-0.26966	-5.69663
2,376.000	0.940	274.460	2,373.418	1,208.418	-4.230	-71.675	50.178	0.13222	-0.02222	-7.86667
2,465.000	0.910	276.490	2,462.406	1,297.406	-4.093	-73.105	51.328	0.04992	-0.03371	2.28090
2,555.000	0.630	277.120	2,552.398	1,387.398	-3.951	-74.306	52.312	0.31125	-0.31111	0.70000
2,644.000	0.590	300.180	2,641.393	1,476.393	-3.660	-75.188	53.160	0.27751	-0.04494	25.91011
2,734.000	0.610	302.100	2,731.388	1,566.388	-3.172	-75.994	54.085	0.03151	0.02222	2.13333
2,823.000	0.790	286.690	2,820.382	1,655.382	-2.744	-76.983	55.104	0.29094	0.20225	-17.31461
2,913.000	0.790	307.960	2,910.373	1,745.373	-2.184	-78.067	56.283	0.32398	0.00000	23.63333
3,002.000	0.840	301.450	2,999.364	1,834.364	-1.467	-79.107	57.535	0.11815	0.05618	-7.31461
3,092.000	0.730	293.690	3,089.356	1,924.356	-0.892	-80.195	58.727	0.16971	-0.12222	-8.62222
3,181.000	0.760	287.080	3,178.348	2,013.348	-0.491	-81.278	59.798	0.10221	0.03371	-7.42697
3,271.000	0.660	271.240	3,268.342	2,103.342	-0.304	-82.367	60.729	0.24367	-0.11111	-17.60000

KOP-3360' MD/3357' TVD



EQT
Survey Report

Database:	EDM_Definitive	Local Co-ordinate Reference:	Well Hicks M10H
Company:	EQT (Chevron Data) 02-13-21	TVD Reference:	KB@25 @ 1165.000usft
Project:	Marshall County, WV Chevron	MD Reference:	KB@25 @ 1165.000usft
Site:	Hicks	North Reference:	True
Well:	Hicks M10H	Survey Calculation Method:	Minimum Curvature
Wellbore:	Main		
Design:	Hicks M10H As Drilled		

Survey

Measured Depth (usft)	Inclination (°)	Azimuth (°)	Vertical Depth (usft)	Subsea Depth (usft)	+N/-S (usft)	+E/-W (usft)	Vertical Section (usft)	Dogleg Rate (°/100usft)	Build Rate (°/100usft)	Turn Rate (°/100usft)	
3,360.000	0.540	270.300	3,357.337	2,192.337	-0.291	-83.299	61.427	0.13528	-0.13483	-1.05618	
3,450.000	3.060	246.590	3,447.286	2,282.286	-1.243	-85.928	62.731	2.86083	2.80000	-26.34445	
3,539.000	6.430	241.040	3,535.968	2,370.968	-4.601	-92.470	65.312	3.81709	3.78652	-6.23596	
3,629.000	11.390	232.310	3,624.858	2,459.858	-12.480	-103.919	68.481	5.69666	5.51111	-9.70000	
3,718.000	15.480	233.330	3,711.404	2,546.404	-24.951	-120.407	72.287	4.60304	4.59551	1.14607	
3,807.000	17.050	239.420	3,796.846	2,631.846	-38.684	-141.170	78.407	2.60256	1.76404	6.84270	
3,897.000	17.260	242.230	3,882.843	2,717.843	-51.618	-164.343	86.848	0.94993	0.23333	3.12222	
3,987.000	17.420	232.650	3,968.771	2,803.771	-66.015	-186.871	93.827	3.17407	0.17778	-10.64444	
4,055.000	20.550	237.660	4,033.068	2,868.068	-78.579	-205.052	98.823	5.18566	4.60294	7.36765	
4,160.000	17.310	244.360	4,132.388	2,967.388	-95.203	-234.717	109.583	3.71109	-3.08571	6.38095	
4,249.000	20.770	274.260	4,216.704	3,051.704	-99.772	-262.464	127.036	11.48341	3.88764	33.59551	
4,339.000	26.550	279.750	4,299.114	3,134.114	-95.176	-298.236	156.592	6.86653	6.42222	6.10000	
4,428.000	30.610	269.160	4,377.304	3,212.304	-92.136	-340.541	189.934	7.27943	4.56180	-11.89888	
4,518.000	30.620	259.740	4,454.804	3,289.804	-96.557	-386.032	220.613	5.32589	0.01111	-10.46667	
4,607.000	30.640	255.710	4,531.394	3,366.394	-106.193	-430.318	246.891	2.30678	0.02247	-4.52809	
4,697.000	30.550	250.450	4,608.879	3,443.879	-119.511	-474.104	270.323	2.97553	-0.10000	-5.84444	
4,787.000	29.010	248.480	4,686.993	3,521.993	-135.171	-515.964	290.753	2.02707	-1.71111	-2.18889	
4,876.000	28.710	248.400	4,764.939	3,599.939	-150.957	-555.917	309.688	0.33986	-0.33708	-0.08989	
4,966.000	28.960	248.260	4,843.780	3,678.780	-166.985	-596.255	328.745	0.28773	0.27778	-0.15556	
5,055.000	30.200	249.270	4,921.180	3,756.180	-182.890	-637.206	348.339	1.50162	1.39326	1.13483	
5,145.000	30.280	250.500	4,998.934	3,833.934	-198.477	-679.766	369.336	0.69399	0.08889	1.36667	
5,234.000	29.900	251.930	5,075.941	3,910.941	-212.848	-722.006	390.916	0.91169	-0.42697	1.60674	
5,324.000	29.790	253.770	5,154.006	3,989.006	-226.054	-764.799	413.687	1.02471	-0.12222	2.04444	
5,414.000	29.770	254.260	5,232.121	4,067.121	-238.364	-807.770	437.194	0.27132	-0.02222	0.54444	
5,503.000	29.830	253.390	5,309.352	4,144.352	-250.686	-850.249	460.329	0.49046	0.06742	-0.97753	
5,592.000	29.470	253.060	5,386.699	4,221.699	-263.392	-892.404	482.965	0.44414	-0.40449	-0.37079	
5,682.000	29.750	253.340	5,464.945	4,299.946	-276.244	-934.974	505.810	0.34701	0.31111	0.31111	
5,771.000	29.590	252.760	5,542.277	4,377.277	-289.088	-977.115	528.344	0.36930	-0.17978	-0.65169	
5,860.000	29.610	251.050	5,619.663	4,454.663	-302.740	-1,018.898	550.068	0.94927	0.02247	-1.92135	
5,950.000	29.770	249.090	5,697.850	4,532.850	-317.936	-1,060.800	570.843	1.09318	0.17778	-2.17778	
6,040.000	28.580	248.480	5,776.431	4,611.431	-333.807	-1,101.700	590.421	1.36286	-1.32222	-0.67778	
6,131.000	27.150	265.280	5,857.003	4,692.003	-343.516	-1,142.708	614.225	8.74429	-1.57143	18.46154	
6,219.000	30.510	273.180	5,934.113	4,769.113	-343.929	-1,185.049	645.271	5.76516	3.81818	8.97727	
6,308.000	37.730	281.150	6,007.781	4,842.781	-337.398	-1,234.414	686.185	9.52695	8.11236	8.95506	
6,399.000	42.410	285.190	6,077.412	4,912.412	-323.963	-1,291.388	737.372	5.88137	5.14286	4.43956	
6,489.000	46.880	287.750	6,141.434	4,976.434	-305.987	-1,351.995	794.304	5.35299	4.96667	2.84444	
6,578.000	54.070	290.520	6,198.044	5,033.044	-283.421	-1,416.770	857.407	8.42642	8.07865	3.11236	
6,668.000	60.510	294.120	6,246.665	5,081.665	-254.605	-1,486.736	928.555	7.90581	7.15556	4.00000	
6,758.000	67.470	296.700	6,286.113	5,121.113	-219.874	-1,559.719	1,005.915	8.15032	7.73333	2.86667	
6,847.000	74.480	300.580	6,315.117	5,150.117	-179.528	-1,633.471	1,087.623	8.88788	7.87640	4.35955	
Top of Marcellus@6326' TVD											
6,906.160	76.788	304.020	6,329.799	5,164.799	-148.904	-1,681.897	1,144.053	6.85198	3.90149	5.81510	



EQT
Survey Report

Database:	EDM_Definitive	Local Co-ordinate Reference:	Well Hicks M10H
Company:	EQT (Chevron Data) 02-13-21	TVD Reference:	KB@25 @ 1165.000usft
Project:	Marshall County, WV Chevron	MD Reference:	KB@25 @ 1165.000usft
Site:	Hicks	North Reference:	True
Well:	Hicks M10H	Survey Calculation Method:	Minimum Curvature
Wellbore:	Main		
Design:	Hicks M10H As Drilled		

Survey

Measured Depth (usft)	Inclination (°)	Azimuth (°)	Vertical Depth (usft)	Subsea Depth (usft)	+N/-S (usft)	+E/-W (usft)	Vertical Section (usft)	Dogleg Rate (°/100usft)	Build Rate (°/100usft)	Turn Rate (°/100usft)
6,936.000	77.970	305.730	6,336.319	5,171.319	-132.254	-1,705.785	1,172.927	6.85198	3.96071	5.72985
7,026.000	82.220	311.650	6,351.810	5,186.810	-76.849	-1,774.919	1,261.351	8.01649	4.72222	6.57778
LP=7115' MD/ 6359' TVD										
7,115.000	87.970	316.040	6,359.421	5,194.421	-15.454	-1,838.819	1,349.932	8.11616	6.46067	4.93258
Deepest Point of Well=7205' MD/ 6361' TVD										
7,205.000	90.710	320.660	6,360.458	5,195.458	51.767	-1,898.605	1,439.390	5.96751	3.04444	5.13333
7,294.000	90.650	323.550	6,359.401	5,194.402	121.988	-1,953.260	1,527.071	3.24766	-0.06742	3.24719
7,384.000	90.920	328.150	6,358.168	5,193.168	196.442	-2,003.765	1,614.529	5.11942	0.30000	5.11111
7,473.000	91.080	327.520	6,356.614	5,191.615	271.771	-2,051.137	1,700.259	0.73023	0.17978	-0.70787
7,563.000	90.920	322.760	6,355.043	5,190.043	345.588	-2,102.556	1,787.965	5.29107	-0.17778	-5.28889
7,652.000	91.020	324.500	6,353.536	5,188.536	417.238	-2,155.323	1,875.211	1.95800	0.11236	1.95506
7,831.000	90.950	319.920	6,350.457	5,185.457	558.636	-2,264.964	2,051.460	2.55858	-0.03911	-2.55866
7,921.000	90.490	316.300	6,349.326	5,184.326	625.618	-2,325.042	2,140.974	4.05424	-0.51111	-4.02222
8,010.000	90.740	314.970	6,348.371	5,183.371	689.239	-2,387.268	2,229.815	1.52047	0.28090	-1.49438
8,100.000	90.580	315.600	6,347.334	5,182.334	753.190	-2,450.586	2,319.685	0.72218	-0.17778	0.70000
8,189.000	90.650	315.590	6,346.379	5,181.379	816.769	-2,512.858	2,408.531	0.07945	0.07865	-0.01124
8,279.000	90.460	315.090	6,345.507	5,180.507	880.782	-2,576.116	2,498.399	0.59429	-0.21111	-0.55556
8,368.000	90.710	314.740	6,344.598	5,179.598	943.617	-2,639.138	2,587.301	0.48326	0.28090	-0.39326
8,457.000	90.890	315.500	6,343.356	5,178.356	1,006.675	-2,701.932	2,676.183	0.87747	0.20225	0.85393
8,547.000	90.990	315.870	6,341.879	5,176.879	1,071.062	-2,764.797	2,766.012	0.42581	0.11111	0.41111
8,636.000	90.460	315.280	6,340.753	5,175.753	1,134.617	-2,827.090	2,854.858	0.89108	-0.59551	-0.66292
8,725.000	90.250	314.560	6,340.201	5,175.202	1,197.460	-2,890.108	2,943.761	0.84268	-0.23596	-0.80899
8,815.000	90.460	314.570	6,339.644	5,174.644	1,260.613	-2,954.228	3,033.689	0.23360	0.23333	0.01111
8,904.000	90.620	314.580	6,338.805	5,173.805	1,323.075	-3,017.623	3,122.614	0.18013	0.17978	0.01124
8,994.000	91.200	316.320	6,337.376	5,172.376	1,387.201	-3,080.750	3,212.461	2.03767	0.64444	1.93333
9,083.000	90.950	315.820	6,335.706	5,170.706	1,451.286	-3,142.485	3,301.251	0.62802	-0.28090	-0.56180
9,173.000	90.770	314.290	6,334.355	5,169.355	1,514.978	-3,206.055	3,391.134	1.71153	-0.20000	-1.70000
9,262.000	90.150	315.230	6,333.640	5,168.640	1,577.643	-3,269.247	3,480.046	1.26520	-0.69663	1.05618
9,351.000	90.310	315.130	6,333.283	5,168.283	1,640.772	-3,331.981	3,568.932	0.21200	0.17978	-0.11236
9,441.000	90.340	317.280	6,332.773	5,167.773	1,705.731	-3,394.264	3,658.715	2.38908	0.03333	2.38889
9,530.000	89.720	314.310	6,332.726	5,167.726	1,769.524	-3,456.310	3,747.538	3.40900	-0.69663	-3.33708
9,620.000	90.060	315.830	6,332.899	5,167.899	1,833.239	-3,519.869	3,837.429	1.73062	0.37778	1.68889
9,709.000	89.970	315.140	6,332.875	5,167.875	1,896.701	-3,582.267	3,926.290	0.78185	-0.10112	-0.77528
9,799.000	91.110	314.190	6,332.027	5,167.027	1,959.963	-3,646.273	4,016.206	1.64879	1.26667	-1.05556
9,888.000	90.920	316.210	6,330.450	5,165.451	2,023.102	-3,708.972	4,105.072	2.27933	-0.21348	2.26966
9,978.000	90.490	315.490	6,329.343	5,164.343	2,087.673	-3,771.655	4,194.890	0.93176	-0.47778	-0.80000
10,067.000	90.520	316.900	6,328.559	5,163.559	2,151.900	-3,833.257	4,283.678	1.58457	0.03371	1.58427
0										
10,156.000	90.860	315.050	6,327.487	5,162.487	2,215.887	-3,895.103	4,372.483	2.11331	0.38202	-2.07865
0										
10,246.000	90.650	316.260	6,326.301	5,161.301	2,280.243	-3,958.004	4,462.318	1.36443	-0.23333	1.34444
0										
10,335.000	90.580	316.600	6,325.345	5,160.346	2,344.723	-4,019.343	4,551.080	0.39001	-0.07865	0.38202
0										



EQT
Survey Report

Database:	EDM_Definitive	Local Co-ordinate Reference:	Well Hicks M10H
Company:	EQT (Chevron Data) 02-13-21	TVD Reference:	KB@25 @ 1165.00usft
Project:	Marshall County, WV Chevron	MD Reference:	KB@25 @ 1165.00usft
Site:	Hicks	North Reference:	True
Well:	Hicks M10H	Survey Calculation Method:	Minimum Curvature
Wellbore:	Main		
Design:	Hicks M10H As Drilled		

Survey											
Measured Depth (usft)	Inclination (°)	Azimuth (°)	Vertical Depth (usft)	Subsea Depth (usft)	+N/-S (usft)	+E/-W (usft)	Vertical Section (usft)	Dogleg Rate (°/100usft)	Build Rate (°/100usft)	Turn Rate (°/100usft)	
10,425.000	90.680	316.230	6,324.356	5,159.356	2,409.911	-4,081.388	4,640.841	0.42584	0.11111	-0.41111	
10,515.000	90.430	316.810	6,323.484	5,158.484	2,475.212	-4,143.313	4,730.591	0.70173	-0.27778	0.64444	
10,604.000	90.400	316.600	6,322.839	5,157.840	2,539.988	-4,204.344	4,819.324	0.23834	-0.03371	-0.23596	
10,694.000	90.550	315.950	6,322.093	5,157.093	2,605.025	-4,266.549	4,909.103	0.74118	0.16667	-0.72222	
10,783.000	90.580	317.470	6,321.216	5,156.216	2,669.802	-4,327.571	4,997.831	1.70811	0.03371	1.70787	
10,873.000	90.430	316.640	6,320.422	5,155.422	2,735.680	-4,388.885	5,087.515	0.93713	-0.16667	-0.92222	
10,962.000	90.520	316.590	6,319.685	5,154.685	2,800.359	-4,450.017	5,176.258	0.11568	0.10112	-0.05618	
11,051.000	90.520	316.230	6,318.877	5,153.877	2,864.818	-4,511.379	5,265.024	0.40448	0.00000	-0.40449	
11,141.000	89.750	316.180	6,318.665	5,153.665	2,929.781	-4,573.665	5,354.813	0.85736	-0.85556	-0.05556	
11,230.000	90.280	316.400	6,318.642	5,153.642	2,994.114	-4,635.165	5,443.595	0.64477	0.59551	0.24719	
11,319.000	90.520	316.760	6,318.020	5,153.020	3,058.757	-4,696.337	5,532.343	0.48613	0.26966	0.40449	
11,409.000	90.120	316.240	6,317.518	5,152.518	3,124.039	-4,758.287	5,622.098	0.72894	-0.44444	-0.57778	
11,498.000	90.370	315.160	6,317.137	5,152.137	3,187.734	-4,820.445	5,710.938	1.24556	0.28090	-1.21348	
11,677.000	90.370	319.050	6,315.981	5,150.981	3,318.842	-4,942.256	5,889.267	2.17314	0.00000	2.17318	
11,766.000	90.680	319.190	6,315.165	5,150.165	3,386.130	-5,000.502	5,977.631	0.38218	0.34831	0.15730	
11,856.000	91.910	318.550	6,313.131	5,148.131	3,453.901	-5,059.685	6,067.013	1.54051	1.36667	-0.71111	
11,945.000	91.290	318.650	6,310.646	5,145.646	3,520.634	-5,118.518	6,155.438	0.70563	-0.69663	0.11236	
12,035.000	90.280	318.690	6,309.413	5,144.413	3,588.210	-5,177.947	6,244.871	1.12310	-1.12222	0.04444	
12,124.000	90.520	317.190	6,308.792	5,143.792	3,654.284	-5,237.566	6,333.433	1.70679	0.26966	-1.68539	
12,214.000	91.080	317.880	6,307.535	5,142.535	3,720.669	-5,298.322	6,423.046	0.98733	0.62222	0.76667	
12,303.000	90.650	318.130	6,306.191	5,141.192	3,786.806	-5,357.862	6,511.593	0.55885	-0.48315	0.28090	
12,392.000	90.550	318.440	6,305.260	5,140.260	3,853.238	-5,417.082	6,600.101	0.36597	-0.11236	0.34831	
12,481.000	90.370	318.530	6,304.545	5,139.545	3,919.877	-5,476.070	6,688.578	0.22612	-0.20225	0.10112	
12,571.000	90.620	318.600	6,303.767	5,138.767	3,987.348	-5,535.627	6,778.034	0.28846	0.27778	0.07778	
12,660.000	90.340	318.370	6,303.022	5,138.022	4,053.987	-5,594.616	6,866.511	0.40713	-0.31461	-0.25843	
12,750.000	90.650	318.900	6,302.244	5,137.244	4,121.531	-5,654.090	6,955.955	0.68221	0.34444	0.58889	
12,929.000	91.350	318.050	6,299.120	5,134.120	4,255.520	-5,772.738	7,133.882	0.61510	0.39106	-0.47486	
13,018.000	90.890	319.140	6,297.381	5,132.381	4,322.261	-5,831.588	7,222.325	1.32910	-0.51685	1.22472	
13,107.000	90.770	318.200	6,296.091	5,131.091	4,389.085	-5,890.356	7,310.763	1.06464	-0.13483	-1.05618	



EQT
Survey Report

Database:	EDM Definitive	Local Co-ordinate Reference:	Well Hicks M10H
Company:	EQT (Chevron Data) 02-13-21	TVD Reference:	KB@25 @ 1165.000usft
Project:	Marshall County, WV Chevron	MD Reference:	KB@25 @ 1165.000usft
Site:	Hicks	North Reference:	True
Well:	Hicks M10H	Survey Calculation Method:	Minimum Curvature
Wellbore:	Main		
Design:	Hicks M10H As Drilled		

Survey

Measured Depth (usft)	Inclination (°)	Azimuth (°)	Vertical Depth (usft)	Subsea Depth (usft)	+N/-S (usft)	+E/-W (usft)	Vertical Section (usft)	Dogleg Rate (°/100usft)	Build Rate (°/100usft)	Turn Rate (°/100usft)
13,196.000	90.550	317.600	6,295.066	5,130.066	4,455.116	-5,950.020	7,399.330	0.71800	-0.24719	-0.67416
13,286.000	90.370	318.190	6,294.344	5,129.344	4,521.886	-6,010.362	7,488.896	0.68536	-0.20000	0.65556
13,375.000	90.460	316.480	6,293.699	5,128.699	4,587.326	-6,070.674	7,577.545	1.92396	0.10112	-1.92135
13,465.000	90.800	317.170	6,292.709	5,127.709	4,652.955	-6,132.251	7,667.257	0.85465	0.37778	0.76667
13,554.000	90.180	316.190	6,291.948	5,126.948	4,717.702	-6,193.308	7,755.991	1.30294	-0.69663	-1.10112
13,643.000	90.340	320.060	6,291.544	5,126.544	4,783.959	-6,252.704	7,844.511	4.35198	0.17978	4.34831
13,733.000	90.890	317.660	6,290.578	5,125.578	4,851.729	-6,311.907	7,933.908	2.73563	0.61111	-2.66667
13,822.000	90.520	317.350	6,289.483	5,124.483	4,917.347	-6,372.024	8,022.532	0.54234	-0.41573	-0.34831
13,911.000	90.650	318.630	6,288.574	5,123.574	4,983.471	-6,431.584	8,111.085	1.44553	0.14607	1.43820
14,001.000	90.310	317.450	6,287.820	5,122.820	5,050.393	-6,491.756	8,200.627	1.36441	-0.37778	-1.31111
14,090.000	90.520	316.990	6,287.176	5,122.176	5,115.714	-6,552.202	8,289.294	0.56815	0.23596	-0.51685
14,180.000	90.710	317.850	6,286.210	5,121.210	5,181.980	-6,613.093	8,378.927	0.97854	0.21111	0.95556
14,269.000	90.520	317.230	6,285.254	5,120.254	5,247.635	-6,673.171	8,467.548	0.72857	-0.21348	-0.69663
14,358.000	90.980	317.910	6,284.089	5,119.089	5,313.320	-6,733.213	8,556.161	0.92239	0.51685	0.76404
14,448.000	90.520	317.340	6,282.911	5,117.911	5,379.801	-6,793.865	8,645.763	0.81380	-0.51111	-0.63333
14,537.000	90.620	317.920	6,282.026	5,117.026	5,445.552	-6,853.841	8,734.371	0.66127	0.11236	0.65169
14,627.000	90.460	316.810	6,281.178	5,116.178	5,511.759	-6,914.796	8,824.013	1.24603	-0.17778	-1.23333
14,717.000	90.430	316.370	6,280.479	5,115.479	5,577.138	-6,976.644	8,913.756	0.49001	-0.03333	-0.48889
14,806.000	90.370	314.050	6,279.857	5,114.857	5,640.295	-7,039.339	9,002.632	2.60755	-0.06742	-2.60674
14,895.000	90.620	317.590	6,279.088	5,114.088	5,704.109	-7,101.352	9,091.445	3.98728	0.28090	3.97753
14,984.000	90.490	317.230	6,278.226	5,113.226	5,769.629	-7,161.580	9,180.085	0.43004	-0.14607	-0.40449
15,074.000	90.460	316.230	6,277.480	5,112.480	5,835.158	-7,223.266	9,269.811	1.11157	-0.03333	-1.11111
15,163.000	90.370	317.050	6,276.835	5,111.835	5,899.863	-7,284.370	9,358.551	0.92686	-0.10112	0.92135
15,253.000	90.680	318.230	6,276.010	5,111.010	5,966.362	-7,345.007	9,448.153	1.35555	0.34444	1.31111
15,342.000	90.490	317.810	6,275.102	5,110.102	6,032.519	-7,404.533	9,536.703	0.51793	-0.21348	-0.47191



EQT
Survey Report

Database:	EDM_Definitive	Local Co-ordinate Reference:	Well Hicks M10H
Company:	EQT (Chevron Data) 02-13-21	TVD Reference:	KB@25 @ 1165.000usft
Project:	Marshall County, WV-Chevron	MD Reference:	KB@25 @ 1165.000usft
Site:	Hicks	North Reference:	True
Well:	Hicks M10H	Survey Calculation Method:	Minimum Curvature
Wellbore:	Main		
Design:	Hicks M10H As Drilled		

Survey

Measured Depth (usft)	Inclination (°)	Azimuth (°)	Vertical Depth (usft)	Subsea Depth (usft)	+N/-S (usft)	+E/-W (usft)	Vertical Section (usft)	Dogleg Rate (°/100usft)	Build Rate (°/100usft)	Turn Rate (°/100usft)
15,432.000	90.680	318.060	6,274.183	5,109.183	6,099.331	-7,464.828	9,626.261	0.34888	0.21111	0.27778
15,521.000	90.710	317.680	6,273.103	5,108.103	6,165.330	-7,524.526	9,714.832	0.42826	0.03371	-0.42697
15,611.000	90.890	318.060	6,271.847	5,106.847	6,232.070	-7,584.893	9,804.396	0.46716	0.20000	0.42222
15,700.000	90.800	318.060	6,270.534	5,105.534	6,298.265	-7,644.370	9,892.935	0.10112	-0.10112	0.00000
15,790.000	90.860	318.080	6,269.230	5,104.230	6,365.214	-7,704.504	9,982.468	0.07027	0.06667	0.02222
15,879.000	90.550	317.050	6,268.135	5,103.135	6,430.894	-7,764.551	10,071.083	1.20850	-0.34831	-1.15730
15,969.000	90.710	317.890	6,267.146	5,102.146	6,497.213	-7,825.385	10,160.708	0.95006	0.17778	0.93333
16,058.000	90.370	317.280	6,266.307	5,101.307	6,562.916	-7,885.412	10,249.324	0.78464	-0.38202	-0.68539
16,148.000	90.650	317.560	6,265.506	5,100.506	6,629.183	-7,946.305	10,338.959	0.43997	0.31111	0.31111
16,237.000	90.370	318.430	6,264.714	5,099.714	6,695.315	-8,005.860	10,427.513	1.02687	-0.31461	0.97753
16,327.000	90.550	318.240	6,263.991	5,098.991	6,762.547	-8,065.688	10,517.009	0.29080	0.20000	-0.21111
16,416.000	90.580	317.340	6,263.113	5,098.113	6,828.464	-8,125.479	10,605.595	1.01175	0.03371	-1.01124
16,505.000	90.550	317.210	6,262.236	5,097.236	6,893.842	-8,185.861	10,694.253	0.14990	-0.03371	-0.14607
16,685.000	90.580	317.450	6,260.461	5,095.461	7,026.184	-8,307.854	10,873.548	0.13436	0.01667	0.13333
16,775.000	90.800	318.400	6,259.377	5,094.377	7,092.982	-8,368.159	10,963.105	1.08341	0.24444	1.05556
16,864.000	90.580	318.310	6,258.305	5,093.305	7,159.485	-8,427.296	11,051.600	0.26707	-0.24719	-0.10112
16,954.000	90.770	318.030	6,257.245	5,092.245	7,226.542	-8,487.315	11,141.119	0.37596	0.21111	-0.31111
17,044.000	90.770	317.920	6,256.035	5,091.035	7,293.392	-8,547.560	11,230.668	0.12221	0.00000	-0.12222
17,133.000	90.520	316.240	6,255.033	5,090.034	7,358.561	-8,608.161	11,319.348	1.90831	-0.28090	-1.88764
17,223.000	91.390	316.860	6,253.533	5,088.533	7,423.889	-8,670.047	11,409.085	1.18696	0.96667	0.68889
17,313.000	91.720	316.880	6,251.091	5,086.091	7,489.547	-8,731.553	11,498.764	0.36734	0.36667	0.02222
17,403.000	91.940	317.190	6,248.217	5,083.217	7,555.372	-8,792.861	11,588.409	0.42222	0.24444	0.34444
17,492.000	92.860	316.870	6,244.490	5,079.490	7,620.437	-8,853.471	11,677.026	1.09435	1.03371	-0.35955
17,582.000	93.020	316.720	6,239.874	5,074.874	7,685.952	-8,915.005	11,766.629	0.24354	0.17778	-0.16667
17,672.000	92.960	316.790	6,235.180	5,070.180	7,751.422	-8,976.581	11,856.234	0.10236	-0.06667	0.07778



EQT
Survey Report

Database:	EDM_Definitive	Local Co-ordinate Reference:	Well Hicks M10H
Company:	EQT (Chevron Data) 02-13-21	TVD Reference:	KB@25 @ 1165.000usft
Project:	Marshall County, WV Chevron	MD Reference:	KB@25 @ 1165.000usft
Site:	Hicks	North Reference:	True
Well:	Hicks M10H	Survey Calculation Method:	Minimum Curvature
Wellbore:	Main		
Design:	Hicks M10H As Drilled		

Measured Depth (usft)	Inclination (°)	Azimuth (°)	Vertical Depth (usft)	Subsea Depth (usft)	+N/-S (usft)	+E/-W (usft)	Vertical Section (usft)	Dogleg Rate (°/100usft)	Build Rate (°/100usft)	Turn Rate (°/100usft)
17,761.000	92.310	317.000	6,231.088	5,066.088	7,816.332	-9,037.334	11,944.852	0.76743	-0.73034	0.23596
17,851.000	91.540	317.310	6,228.065	5,063.065	7,882.281	-9,098.500	12,034.475	0.92222	-0.85556	0.34444
17,940.000	91.260	316.780	6,225.890	5,060.890	7,947.400	-9,159.129	12,123.142	0.67334	-0.31461	-0.59551
18,030.000	90.550	317.320	6,224.469	5,059.469	8,013.266	-9,220.443	12,212.819	0.99109	-0.78889	0.60000
18,119.000	90.550	317.190	6,223.614	5,058.614	8,078.623	-9,280.847	12,301.480	0.14606	0.00000	-0.14607
18,208.000	89.880	316.750	6,223.280	5,058.280	8,143.681	-9,341.578	12,390.182	0.90063	-0.75281	-0.49438
18,298.000	88.950	316.670	6,224.199	5,059.199	8,209.187	-9,403.287	12,479.908	1.03715	-1.03333	-0.08889
18,387.000	88.740	316.210	6,225.993	5,060.993	8,273.668	-9,464.605	12,568.656	0.56807	-0.23596	-0.51685
18,476.000	88.950	316.920	6,227.787	5,062.787	8,338.282	-9,525.783	12,657.390	0.83176	0.23596	0.79775
18,566.000	88.580	317.040	6,229.727	5,064.727	8,404.067	-9,587.171	12,747.067	0.43218	-0.41111	0.13333
18,656.000	89.850	316.710	6,230.960	5,065.960	8,469.747	-9,648.687	12,836.768	1.45796	1.41111	-0.36667
18,745.000	90.090	316.610	6,231.007	5,066.007	8,534.476	-9,709.770	12,925.509	0.29213	0.26966	-0.11236
18,834.000	89.880	316.260	6,231.030	5,066.030	8,598.965	-9,771.107	13,014.276	0.45861	-0.23596	-0.39326
18,924.000	89.940	316.650	6,231.171	5,066.171	8,664.200	-9,833.110	13,104.037	0.43843	0.06667	0.43333
19,013.000	90.550	316.570	6,230.791	5,065.791	8,728.875	-9,894.249	13,192.783	0.69126	0.68539	-0.08989
19,103.000	90.580	316.510	6,229.903	5,064.903	8,794.198	-9,956.152	13,282.531	0.07453	0.03333	-0.06667
19,192.000	90.580	316.220	6,229.002	5,064.002	8,858.609	-10,017.564	13,371.301	0.32583	0.00000	-0.32584
19,281.000	90.620	316.890	6,228.070	5,063.070	8,923.222	-10,078.762	13,460.048	0.75411	0.04494	0.75281
19,371.000	90.520	316.490	6,227.175	5,062.175	8,988.707	-10,140.494	13,549.778	0.45810	-0.11111	-0.44444
19,460.000	90.620	316.700	6,226.290	5,061.290	9,053.364	-10,201.647	13,638.522	0.26133	0.11236	0.23596
19,550.000	90.520	317.380	6,225.394	5,060.394	9,119.225	-10,262.978	13,728.208	0.76364	-0.11111	0.75556
19,639.000	90.460	317.150	6,224.633	5,059.633	9,184.593	-10,323.372	13,816.869	0.26707	-0.06742	-0.25843
19,729.000	90.280	316.730	6,224.052	5,059.052	9,250.349	-10,384.819	13,906.570	0.50771	-0.20000	-0.46667
19,818.000	90.310	316.720	6,223.594	5,058.594	9,315.147	-10,445.828	13,995.302	0.03553	0.03371	-0.01124
19,907.000	90.490	316.630	6,222.972	5,057.973	9,379.890	-10,506.892	14,084.039	0.22612	0.20225	-0.10112



EQT
Survey Report

Database:	EDM_Definitive	Local Co-ordinate Reference:	Well Hicks M10H
Company:	EQT (Chevron Data) 02-13-21	TVD Reference:	KB@25 @ 1165.000usft
Project:	Marshall County, WV Chevron	MD Reference:	KB@25 @ 1165.000usft
Site:	Hicks	North Reference:	True
Well:	Hicks M10H	Survey Calculation Method:	Minimum Curvature
Wellbore:	Main		
Design:	Hicks M10H As Drilled		

Survey

Measured Depth (usft)	Inclination (°)	Azimuth (°)	Vertical Depth (usft)	Subsea Depth (usft)	+N/-S (usft)	+E/-W (usft)	Vertical Section (usft)	Dogleg Rate (°/100usft)	Build Rate (°/100usft)	Turn Rate (°/100usft)
19,997.00	90.580	317.530	6,222.132	5,057.132	9,445.794	-10,568.17	14,173.71	1.00494	0.10000	1.00000
0						8	9			
20,086.00	90.520	316.340	6,221.278	5,056.278	9,510.811	-10,628.94	14,262.42	1.33872	-0.06742	-1.33708
0						6	1			
20,176.00	90.620	317.360	6,220.382	5,055.382	9,576.468	-10,690.49	14,352.13	1.13871	0.11111	1.13333
0						4	0			
20,265.00	90.520	317.050	6,219.497	5,054.497	9,641.772	-10,750.95	14,440.79	0.36597	-0.11236	-0.34831
0						5	8			
20,355.00	90.620	317.420	6,218.602	5,053.602	9,707.842	-10,812.06	14,530.45	0.42584	0.11111	0.41111
0						1	8			
20,444.00	90.680	317.720	6,217.592	5,052.592	9,773.529	-10,872.10	14,619.07	0.34373	0.06742	0.33708
0						5	4			
20,533.00	90.520	317.270	6,216.660	5,051.660	9,839.137	-10,932.23	14,707.70	0.53660	-0.17978	-0.50562
0						5	1			
20,623.00	90.550	317.760	6,215.820	5,050.820	9,905.505	-10,993.01	14,797.32	0.54544	0.03333	0.54444
0						7	3			
20,712.00	90.550	317.760	6,214.965	5,049.965	9,971.392	-11,052.84	14,885.91	0.00000	0.00000	0.00000
0						4	3			
20,802.00	90.550	317.970	6,214.101	5,049.101	10,038.13	-11,113.22	14,975.48	0.23332	0.00000	0.23333
0					0	0	2			
20,891.00	90.550	317.980	6,213.247	5,048.247	10,104.24	-11,172.79	15,064.04	0.01124	0.00000	0.01124
0					1	9	0			
20,980.00	90.710	318.080	6,212.268	5,047.268	10,170.40	-11,232.31	15,152.58	0.21200	0.17978	0.11236
0					8	3	8			
21,070.00	90.680	318.350	6,211.177	5,046.177	10,237.511	-11,292.27	15,242.10	0.30182	-0.03333	0.30000
0						9	0			
21,159.00	90.770	317.580	6,210.051	5,045.051	10,303.60	-11,351.86	15,330.65	0.87099	0.10112	-0.86517
0					9	7	6			
21,248.00	90.680	317.660	6,208.924	5,043.925	10,369.34	-11,411.85	15,419.26	0.13529	-0.10112	0.08989
0					7	2	3			
Final Survey=21285' MD/ 6206' TVD										
21,285.00	90.830	319.650	6,208.437	5,043.437	10,397.12	-11,436.29	15,456.03	5.39317	0.40541	5.37838
0					1	1	0			
Projection to TB=21310' MD/ 6206' TVD										
21,310.00	90.830	319.650	6,208.075	5,043.075	10,416.17	-11,452.47	15,480.82	0.00000	0.00000	0.00000
0					1	5	1			



EQT
Survey Report

Database:	EDM_Definitive	Local Co-ordinate Reference:	Well Hicks M10H
Company:	EQT (Chevron Data) 02-13-21	TVD Reference:	KB@25 @ 1165.000usft
Project:	Marshall County, WV Chevron	MD Reference:	KB@25 @ 1165.000usft
Site:	Hicks	North Reference:	True
Well:	Hicks M10H	Survey Calculation Method:	Minimum Curvature
Wellbore:	Main		
Design:	Hicks M10H As Drilled		

Design Targets

Target Name - hit/miss target - Shape	Dip Angle (°)	Dip Dir. (°)	TVD (usft)	+N/-S (-0.291)	+E/-W (-83.299)	Northing (usft)	Easting (usft)	Latitude	Longitude
Hicks 10H KOP - actual wellpath hits target center - Point	0.000	0.000	3,357.33 7	-0.291	-83.299	501,938.888	1,626,526.755	39.8717051	80.7184437°W
Hicks 10H BHL - actual wellpath hits target center - Point	0.000	0.000	6,208.07 5	10,416.171	-11,452.47 5	512,508.549	1,615,299.862	39.9002941	80.7589674°W
Hicks 10H LP - actual wellpath hits target center - Point	0.000	0.000	6,359.42 1	-15.454	-1,838.819	501,947.530	1,624,771.190	39.8716633	80.7246984°W

Formations

Measured Depth (usft)	Vertical Depth (usft)	Name	Lithology	Dip (°)	Dip Direction (°)
6,906.160	6,325.900	Top of Marcellus@6326' TVD		-1.5000	

Design Annotations

Measured Depth (usft)	Vertical Depth (usft)	Local Coordinates		Comment
		+N/-S (usft)	+E/-W (usft)	
3,360.000	3,357.337	-0.291	-83.299	KOP=3360' MD/3357' TVD
7,115.000	6,359.421	-15.454	-1,838.819	LP=7115' MD/ 6359' TVD
7,205.000	6,360.458	51.767	-1,898.605	Deepest Point of Well=7205' MD/ 6361' TVD
21,285.000	6,208.437	10,397.121	-11,436.291	Final Survey=21285' MD/ 6208' TVD
21,310.000	6,208.075	10,416.171	-11,452.475	Projection to TD=21310' MD/ 6208' TVD

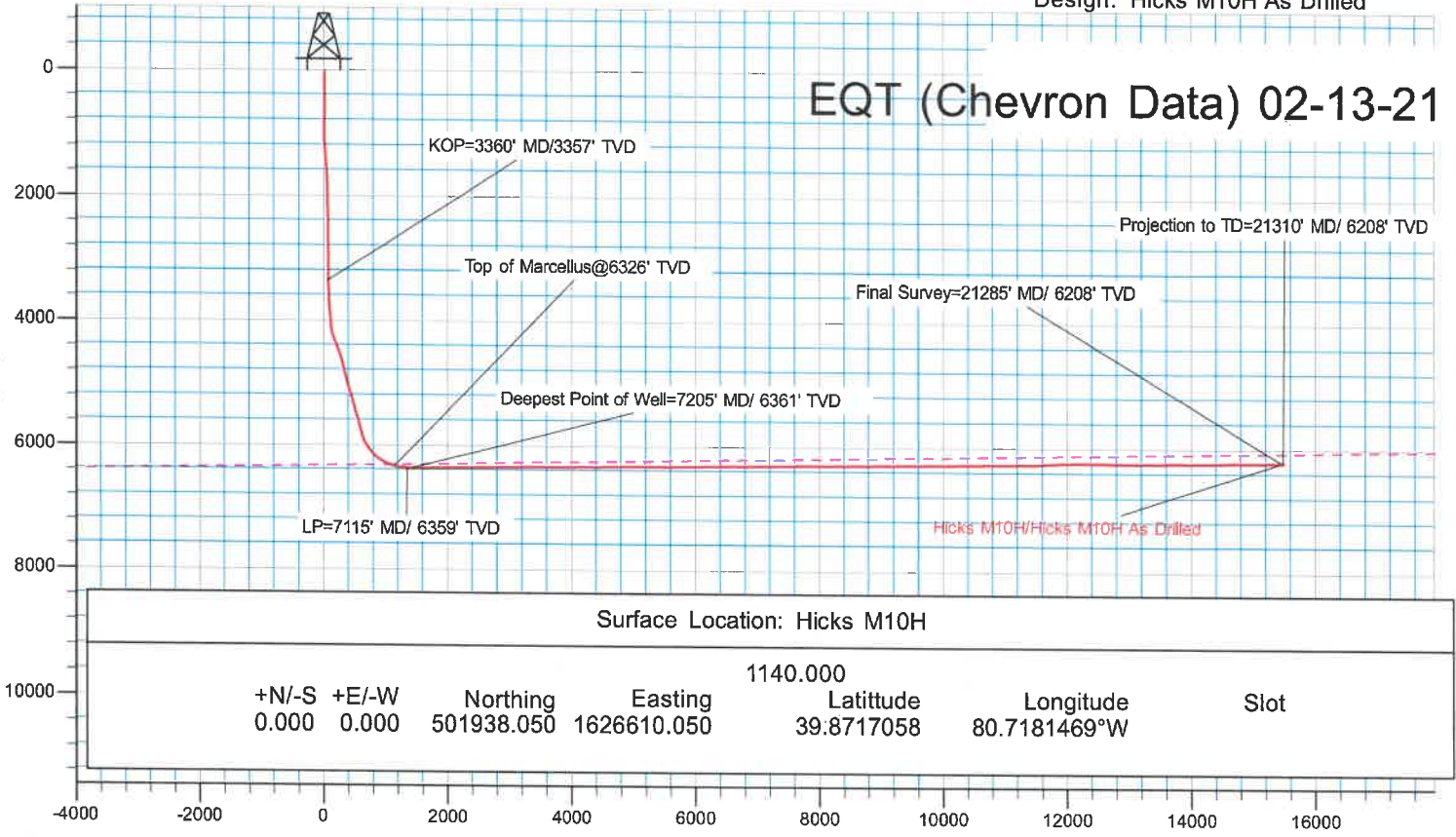
Checked By: _____ Approved By: _____ Date: _____



KB Elevation= KB@25 @ 1165.000usft
 Ground Elevation= 1140.000
 All measurements were taken from KB Elevation

Project: Marcellus Leasing, W. Virginia
 Site: Hicks
 Well: Hicks M10H
 Wellbore: Main
 Design: Hicks M10H As Drilled

EQT (Chevron Data) 02-13-21

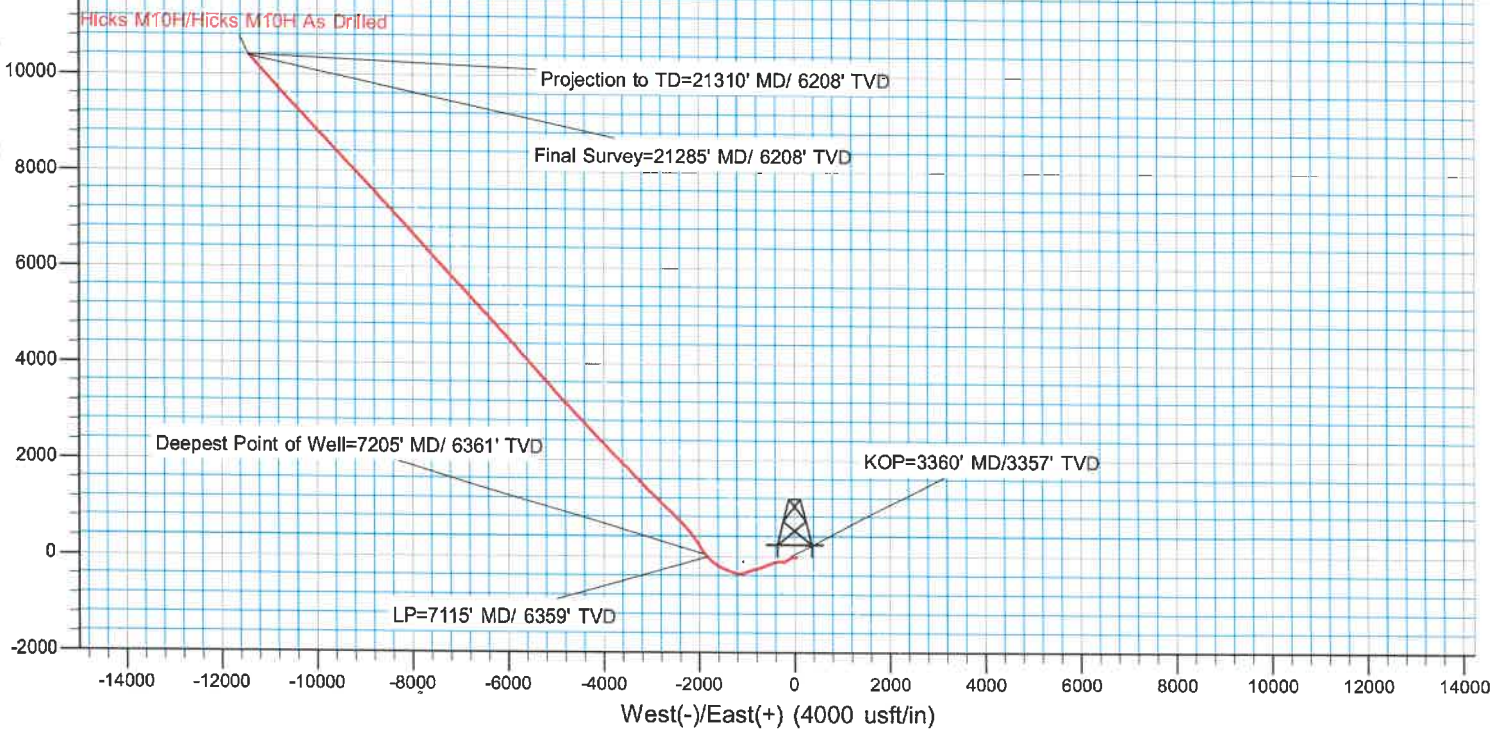


Surface Location: Hicks M10H

		1140.000				
+N/-S	+E/-W	Northing	Easting	Latitude	Longitude	Slot
0.000	0.000	501938.050	1626610.050	39.8717058	80.7181469°W	

Vertical Section at 312.287° (3000 usft/in)

DESIGN TARGET DETAILS						
Name	TVD	Northing	Easting	Latitude	Longitude	
Hicks 10H KOP	3357.337	501938.888	1626526.755	39.8717050	80.7184437°W	
Hicks 10H BHL	6208.075	512508.549	1615299.862	39.9002940	80.7589675°W	
Hicks 10H LP	6359.421	501947.530	1624771.190	39.8716632	80.7246984°W	



West(-)/East(+) (4000 usft/in)