

SOUTHWESTERN ENERGY

Location: Marshall County, WV
 Field: Marshall
 Facility: BW Edge MSH Pad
 Slot: Slot #205
 Well: BW Edge MSH 205H
 Wellbore: BW Edge MSH 205H PWB

Plot reference wellpath is BW Edge MSH 205H PWB Rev-6.0	Grid System: NAD83 / UTM Zone 17 North, US feet
True vertical depths are referenced to SDC 42 (RKB)	* = Wellpath was transformed from a different geodetic datum
Measured depths are referenced to SDC 42 (RKB)	North Reference: Grid north
SDC 42 (RKB) to Mean Sea Level: 1280 feet	Scale: True distance
Mean Sea Level to Mud line (At Slot #205) -1254 feet	Depths are in feet
Coordinates are in feet referenced to Slot	Created by: thomsuzc on 2018-08-28
	Database: WA, Pennsylvania

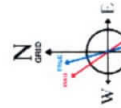
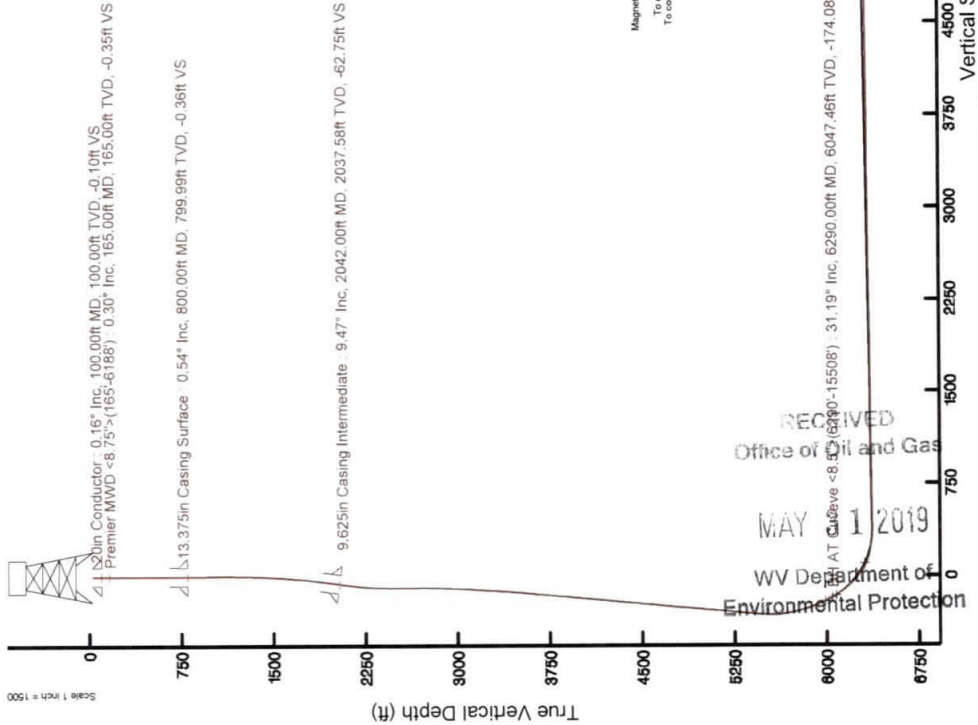
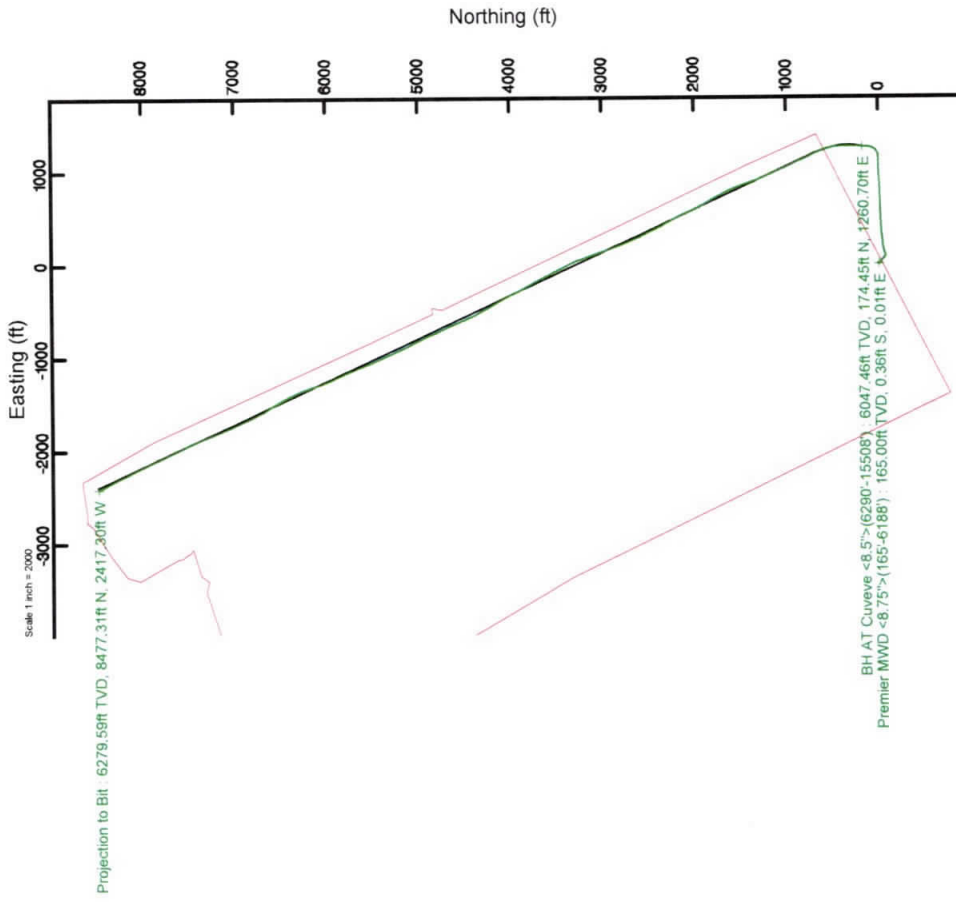


Location Information

Facility Name	Grid East (US ft)	Grid North (US ft)	Latitude	Longitude
BW Edge MSH Pad	1744732.480	14529346.800	40°00'23.681"N	80°37'38.614"W
Local N (ft)	Local E (ft)	Local N (ft)	Local E (ft)	Local N (ft)
0.00	-0.28	1744732.200	14529346.800	80°37'38.617"W
Slot #205				
SDC 42 (RKB) to Mud line (At Slot #205)				28ft
Mean Sea Level to Mud line (At Slot #205)				-1254ft
SDC 42 (RKB) to Mean Sea Level				1280ft

Comments

API: 47-051-01982-0000
 BH Job #: 109308151
 Rig: SDC 42
 Duration: 07/29/2018 - 08/01/2018



User specified Dir: 67.20° Field: 52679 DT
 Magnetic North is 6.11 degrees West of True North (at 7/19/2018)
 Grid North is 0.24 degrees East of True North
 To correct azimuth from Magnetic to Grid subtracted 8.35 degrees
 To correct azimuth from Magnetic to Grid subtracted 8.35 degrees

RECEIVED
 Office of Oil and Gas
 MAY 1 2019
 WV Department of Environmental Protection

Projection to Bit: 90.52° Inc, 15533.00ft MD, 6279.58ft TVD, 8815.18ft VS

Scale 1 inch = 1500
 Vertical Section (ft)
 Azimuth 344.26° with reference 0.00 N, 0.00 E

REFERENCE WELLPATH IDENTIFICATION

Operator	SOUTHWESTERN ENERGY	Slot	Slot #205
Area	Marshall County, WV	Well	BW Edge MSH 205H
Field	Marshall	Wellbore	BW Edge MSH 205H AWB
Facility	BW Edge MSH Pad		

REPORT SETUP INFORMATION

Projection System	NAD83 / UTM Zone 17 North, US feet	Software System	WellArchitect® 5.0
North Reference	Grid	User	Thomsuzc
Scale	0.999612	Report Generated	8/28/2018 at 8:25:35 AM
Convergence at slot	0.24° East	Database/Source file	WA_Pennsylvania/BW_Edge_MSH_205H_AWP_Proj_15533_MD.xml

WELLPATH LOCATION

	Local coordinates		Grid coordinates		Geographic coordinates	
	North[ft]	East[ft]	Easting[US ft]	Northing[US ft]	Latitude	Longitude
Slot Location	0.00	-0.28	1744732.20	14529346.80	40°00'23.681"N	80°37'38.917"W
Facility Reference Pt			1744732.48	14529346.80	40°00'23.681"N	80°37'38.914"W
Field Reference Pt			0.00	0.00	0°00'00.000"	85°29'19.478"W

WELLPATH DATUM

Calculation method	Minimum curvature	SDC 42 (RKB) to Facility Vertical Datum	1280.00ft
Horizontal Reference Pt	Slot	SDC 42 (RKB) to Mean Sea Level	1280.00ft
Vertical Reference Pt	SDC 42 (RKB)	SDC 42 (RKB) to Mud Line at Slot (Slot #205)	26.00ft
MD Reference Pt	SDC 42 (RKB)	Section Origin	N 0.00, E 0.00 ft
Field Vertical Reference	Mean Sea Level	Section Azimuth	344.26°

RECEIVED
Office of Oil and Gas
MAY 31 2019
WV Department of
Environmental Protection

REFERENCE WELLPATH IDENTIFICATION

Operator	Slot	Slot #205
SOUTHWESTERN ENERGY	Well	BW Edge MSH 205H
Area	Wellbore	BW Edge MSH 205H AWB
Field		
Facility		

WELLPATH DATA (187 stations) † = interpolated/extrapolated station

MD [ft]	Inclination [°]	Azimuth [°]	TVD [ft]	Vert Sect [ft]	North [ft]	East [ft]	Grid East [US ft]	Grid North [US ft]	Latitude	Longitude	Closure Dist [ft]	Closure Dir [°]	DLS [°/100ft]	Build Rate [°/100ft]	Turn Rate [°/100ft]
0.00H	0.000	178.160	0.00	0.00	0.00	0.00	1744732.20	14529346.80	40°00'23.681"N	80°37'38.917"W	0.00	0.000	0.00	0.00	0.00
26.00	0.000	178.160	26.00	0.00	0.00	0.00	1744732.20	14529346.80	40°00'23.681"N	80°37'38.917"W	0.00	0.000	0.00	0.00	0.00
165.00	0.300	178.160	165.00	-0.35	-0.36	0.01	1744732.21	14529346.44	40°00'23.677"N	80°37'38.917"W	0.36	178.160	0.22	0.22	128.17
224.00	0.220	143.080	224.00	-0.61	-0.61	0.08	1744732.28	14529346.19	40°00'23.675"N	80°37'38.916"W	0.61	172.079	0.30	-0.14	-59.46
316.00	0.140	132.050	316.00	-0.87	-0.83	0.27	1744732.47	14529345.98	40°00'23.673"N	80°37'38.914"W	0.87	161.615	0.09	-0.09	-11.99
406.00	0.160	247.070	406.00	-0.98	-0.95	0.24	1744732.44	14529345.85	40°00'23.671"N	80°37'38.914"W	0.98	165.780	0.28	0.02	127.80
496.00	0.140	219.480	496.00	-1.06	-1.08	0.05	1744732.25	14529345.72	40°00'23.670"N	80°37'38.917"W	1.08	177.114	0.08	-0.02	-30.66
588.00	0.110	281.380	588.00	-1.08	-1.15	-0.10	1744732.10	14529345.65	40°00'23.669"N	80°37'38.919"W	1.16	185.140	0.14	-0.03	67.28
642.00	0.290	301.100	642.00	-0.96	-1.07	-0.27	1744731.93	14529345.73	40°00'23.670"N	80°37'38.921"W	1.10	194.229	0.35	0.33	36.52
678.00	0.320	289.640	678.00	-0.83	-0.99	-0.44	1744731.76	14529345.81	40°00'23.671"N	80°37'38.923"W	1.08	204.174	0.19	0.08	-31.83
750.00	0.380	284.750	750.00	-0.59	-0.86	-0.86	1744731.34	14529345.94	40°00'23.672"N	80°37'38.928"W	1.22	225.114	0.09	0.08	-6.79
840.00	0.680	296.100	839.99	-0.09	-0.55	-1.63	1744730.57	14529346.25	40°00'23.675"N	80°37'38.938"W	1.72	251.383	0.35	0.33	12.61
885.00	0.770	296.880	884.99	0.30	-0.30	-2.14	1744730.06	14529346.50	40°00'23.678"N	80°37'38.945"W	2.16	262.139	0.20	0.20	1.73
975.00	0.920	296.110	974.98	1.19	0.30	-3.33	1744728.87	14529347.10	40°00'23.684"N	80°37'38.960"W	3.34	275.073	0.17	0.17	-0.86
1066.00	0.260	237.720	1065.97	1.62	0.51	-4.16	1744728.04	14529347.31	40°00'23.686"N	80°37'38.971"W	4.19	276.946	0.89	-0.73	-64.16
1156.00	0.540	163.820	1155.97	1.13	-0.01	-4.22	1744727.99	14529346.79	40°00'23.681"N	80°37'38.971"W	4.22	269.871	0.59	0.31	-82.11
1246.00	0.730	159.840	1245.97	0.14	-0.95	-3.90	1744728.30	14529345.85	40°00'23.671"N	80°37'38.967"W	4.01	256.239	0.22	0.21	-4.42
1337.00	1.560	143.810	1336.95	-1.60	-2.50	-2.97	1744729.23	14529344.30	40°00'23.656"N	80°37'38.956"W	3.88	229.907	0.97	0.91	-17.62
1427.00	2.760	138.850	1426.88	-4.71	-5.12	-0.82	1744731.38	14529341.68	40°00'23.630"N	80°37'38.928"W	5.18	189.089	1.35	1.33	-5.51
1518.00	4.020	135.020	1517.72	-9.47	-9.03	2.88	1744735.08	14529337.78	40°00'23.591"N	80°37'38.881"W	9.47	162.316	1.41	1.38	-4.21
1608.00	4.970	130.000	1607.44	-15.44	-13.76	8.09	1744740.29	14529333.04	40°00'23.544"N	80°37'38.814"W	15.97	149.540	1.14	1.06	-5.58
1698.00	6.040	129.820	1697.03	-22.57	-19.30	14.72	1744746.91	14529327.51	40°00'23.489"N	80°37'38.729"W	24.27	142.674	1.19	1.19	-0.20
1789.00	7.180	131.790	1787.42	-31.32	-26.16	22.64	1744754.83	14529320.65	40°00'23.421"N	80°37'38.628"W	34.59	139.129	1.28	1.25	2.16
1880.00	8.410	131.690	1877.58	-41.72	-34.37	31.84	1744764.03	14529312.44	40°00'23.340"N	80°37'38.510"W	46.86	137.187	1.35	1.35	-0.11
1970.00	9.110	130.310	1966.53	-53.18	-43.36	42.19	1744774.38	14529303.46	40°00'23.251"N	80°37'38.377"W	60.50	135.782	0.81	0.78	-1.53
1983.00	9.210	129.860	1979.36	-54.89	-44.69	43.78	1744775.96	14529302.12	40°00'23.237"N	80°37'38.351"W	62.56	135.593	0.95	0.77	-3.46
2073.00	9.610	128.430	2068.15	-66.93	-53.98	55.19	1744787.37	14529292.84	40°00'23.145"N	80°37'38.211"W	77.20	134.364	0.51	0.44	-1.59
2163.00	7.410	124.540	2157.16	-78.06	-62.73	65.21	1744797.38	14529284.10	40°00'23.058"N	80°37'38.083"W	90.48	133.890	2.65	-2.44	6.90
2254.00	6.150	120.280	2247.52	-86.67	-69.31	73.59	1744805.76	14529277.52	40°00'22.993"N	80°37'37.975"W	101.09	133.283	2.31	-1.38	-15.78
2344.00	6.310	162.490	2337.00	-92.48	-72.81	82.58	1744814.75	14529274.02	40°00'22.958"N	80°37'37.860"W	110.10	131.400	2.14	0.18	-19.77

REFERENCE WELLPATH IDENTIFICATION

Operator	Slot	Slot #205
SOUTHWESTERN ENERGY	Well	BW Edge MSH 205H
Area	Wellbore	BW Edge MSH 205H AWB
Field		
Facility		

WELLPATH DATA (187 stations)

MD [ft]	Inclination [°]	Azimuth [°]	TVD [ft]	Vert Sect [ft]	North [ft]	East [ft]	Grid East [US ft]	Grid North [US ft]	Latitude	Longitude	Closure Dist [ft]	Closure Dir [°]	DLS [°/100ft]	Build Rate [°/100ft]	Turn Rate [°/100ft]
2434.00	7.180	82.990	2426.39	-95.68	-73.19	93.00	1744825.16	14529273.64	40°00'22.954"N	80°37'37.726"W	118.35	128.204	2.71	0.97	-21.67
2524.00	8.280	70.910	2515.58	-96.15	-70.39	104.70	1744836.86	14529276.44	40°00'22.981"N	80°37'37.575"W	126.16	123.910	2.17	1.22	-13.42
2615.00	9.450	67.970	2605.49	-94.95	-65.44	117.82	1744849.98	14529281.38	40°00'23.029"N	80°37'37.407"W	134.78	119.049	1.38	1.29	-3.23
2705.00	10.730	71.970	2694.10	-93.80	-60.08	132.64	1744864.79	14529286.75	40°00'23.082"N	80°37'37.216"W	145.61	114.367	1.62	1.42	4.44
2796.00	11.970	78.160	2783.32	-94.11	-55.52	149.93	1744882.07	14529291.30	40°00'23.126"N	80°37'36.993"W	159.88	110.319	1.91	1.36	6.80
2886.00	14.040	81.170	2871.00	-96.06	-51.93	169.86	1744901.99	14529294.89	40°00'23.161"N	80°37'36.737"W	177.62	106.999	2.42	2.30	3.34
2979.00	14.930	82.760	2961.05	-99.18	-48.69	192.89	1744925.01	14529298.13	40°00'23.192"N	80°37'36.441"W	198.94	104.166	1.05	0.96	1.71
3070.00	16.830	84.380	3048.57	-103.23	-45.92	217.63	1744949.75	14529300.90	40°00'23.218"N	80°37'36.123"W	222.42	101.914	2.14	2.09	1.78
3160.00	18.260	86.780	3134.38	-108.58	-43.85	244.68	1744976.78	14529302.97	40°00'23.237"N	80°37'35.775"W	248.57	100.160	1.78	1.59	2.67
3251.00	20.000	82.500	3220.36	-113.90	-41.02	274.34	1745006.44	14529305.80	40°00'23.264"N	80°37'35.394"W	277.39	98.503	2.45	1.91	-4.70
3341.00	22.480	80.670	3304.24	-118.03	-36.22	306.59	1745038.67	14529310.60	40°00'23.310"N	80°37'34.979"W	308.72	96.737	2.85	2.76	-2.03
3431.00	21.890	86.330	3387.59	-123.46	-32.35	340.31	1745072.38	14529314.46	40°00'23.347"N	80°37'34.546"W	341.85	95.431	2.46	-0.66	6.29
3521.00	20.300	86.000	3471.55	-130.14	-30.19	372.63	1745104.69	14529316.62	40°00'23.367"N	80°37'34.130"W	373.85	94.632	1.77	-1.77	-0.37
3612.00	20.650	86.750	3556.80	-136.83	-28.18	404.40	1745136.44	14529318.63	40°00'23.386"N	80°37'33.722"W	405.38	93.986	0.48	0.38	0.82
3702.00	22.010	88.970	3640.64	-144.54	-26.98	437.11	1745169.14	14529319.83	40°00'23.396"N	80°37'33.302"W	437.94	93.532	1.76	1.51	2.47
3792.00	21.100	87.250	3724.34	-152.46	-25.90	470.15	1745202.17	14529320.91	40°00'23.405"N	80°37'32.877"W	470.86	93.153	1.23	-1.01	-1.91
3883.00	20.690	87.320	3809.36	-159.78	-24.36	502.57	1745234.57	14529322.45	40°00'23.419"N	80°37'32.460"W	503.16	92.775	0.45	-0.45	0.08
3973.00	21.020	88.780	3893.46	-167.42	-23.27	534.59	1745266.58	14529323.54	40°00'23.429"N	80°37'32.049"W	535.09	92.493	0.68	0.37	1.62
4063.00	22.190	88.670	3977.14	-175.70	-22.53	567.72	1745299.70	14529324.28	40°00'23.435"N	80°37'31.623"W	568.17	92.273	1.30	1.30	-0.12
4154.00	20.820	86.940	4061.80	-183.52	-21.27	601.05	1745333.01	14529325.54	40°00'23.446"N	80°37'31.194"W	601.43	92.027	1.66	-1.51	-1.90
4245.00	21.020	87.740	4146.80	-190.88	-19.76	633.51	1745365.46	14529327.04	40°00'23.459"N	80°37'30.777"W	633.81	91.787	0.38	0.22	0.88
4335.00	22.370	88.170	4230.43	-198.76	-18.58	666.75	1745398.69	14529328.23	40°00'23.470"N	80°37'30.350"W	667.01	91.596	1.51	1.50	0.48
4426.00	20.780	86.950	4315.05	-206.47	-17.17	700.18	1745432.11	14529329.64	40°00'23.482"N	80°37'29.920"W	700.39	91.405	1.82	-1.75	-1.34
4516.00	21.600	87.640	4398.96	-213.81	-15.64	732.68	1745464.59	14529331.17	40°00'23.496"N	80°37'29.503"W	732.85	91.223	0.95	0.91	0.77
4607.00	23.740	89.860	4482.93	-222.61	-14.90	767.74	1745499.64	14529331.90	40°00'23.502"N	80°37'29.052"W	767.88	91.112	2.53	2.35	2.44
4697.00	21.980	87.170	4565.86	-231.25	-14.03	802.68	1745534.57	14529332.78	40°00'23.509"N	80°37'28.603"W	802.80	91.001	2.27	-1.96	-2.99
4787.00	21.310	87.740	4649.51	-238.82	-12.55	835.84	1745567.72	14529334.25	40°00'23.522"N	80°37'28.177"W	835.94	90.860	0.78	-0.74	0.63
4878.00	23.110	88.300	4733.76	-247.01	-11.37	870.22	1745602.08	14529335.44	40°00'23.532"N	80°37'27.735"W	870.29	90.748	1.99	1.98	0.62
4968.00	21.180	85.170	4817.12	-254.37	-9.48	904.08	1745635.93	14529337.33	40°00'23.550"N	80°37'27.300"W	904.13	90.600	2.51	-2.14	-3.48
5059.00	21.310	85.390	4901.90	-260.69	-6.76	937.01	1745668.85	14529340.05	40°00'23.575"N	80°37'26.876"W	937.04	90.413	0.27	0.25	0.24

WV Department of Energy and Mineral Resources

REFERENCE WELLPATH IDENTIFICATION

Operator	SOUTHWESTERN ENERGY	Slot	Slot #205
Area	Marshall County, WV	Well	BW Edge MSH 205H
Field	Marshall	Wellbore	BW Edge MSH 205H AWB
Facility	BW Edge MSH Pad		

WELLPATH DATA (187 stations)

MD [ft]	Inclination [°]	Azimuth [°]	TVD [ft]	Vert Sect [ft]	North [ft]	East [ft]	Grid East [US ft]	Grid North [US ft]	Latitude	Longitude	Closure Dist [ft]	Closure Dir [°]	DLS ["/100ft]	Build Rate ["/100ft]	Turn Rate ["/100ft]
5149.00	22.220	88.410	4985.46	-268.02	-4.96	970.40	1745702.22	14529341.84	40°00'23.591"N	80°37'26.447"W	970.41	90.293	1.54	0.90	3.36
5239.00	20.590	86.080	5069.25	-275.42	-3.41	1003.20	1745735.01	14529343.39	40°00'23.605"N	80°37'26.026"W	1003.21	90.195	2.04	-1.81	-2.59
5330.00	20.340	87.740	5154.51	-282.39	-1.69	1034.97	1745766.77	14529345.11	40°00'23.621"N	80°37'25.617"W	1034.97	90.094	0.69	-0.27	1.82
5420.00	21.390	91.790	5238.61	-290.98	-1.59	1067.01	1745798.79	14529345.21	40°00'23.621"N	80°37'25.206"W	1067.01	90.085	1.98	1.17	4.50
5511.00	19.810	89.330	5323.79	-299.99	-1.93	1099.01	1745830.79	14529344.87	40°00'23.616"N	80°37'24.794"W	1099.02	90.100	1.98	-1.74	-2.70
5601.00	18.820	86.790	5408.73	-307.10	-0.93	1128.76	1745860.52	14529344.87	40°00'23.625"N	80°37'24.412"W	1128.76	90.047	1.44	-1.10	-2.82
5646.00	18.260	85.290	5451.39	-310.02	0.05	1143.03	1745874.79	14529346.85	40°00'23.634"N	80°37'24.228"W	1143.03	89.997	1.63	-1.24	-3.33
5691.00	19.710	85.720	5493.94	-312.88	1.20	1157.63	1745889.38	14529348.00	40°00'23.645"N	80°37'24.041"W	1157.63	89.941	3.24	3.22	0.96
5737.00	20.670	79.230	5537.12	-315.13	3.29	1173.34	1745905.08	14529350.09	40°00'23.665"N	80°37'23.839"W	1173.34	89.839	5.29	2.09	-14.11
5782.00	21.080	69.690	5579.18	-315.17	7.59	1188.74	1745920.47	14529354.38	40°00'23.706"N	80°37'23.641"W	1188.76	89.634	7.60	0.91	-21.20
5827.00	21.140	59.360	5621.17	-312.44	14.53	1203.31	1745935.04	14529361.33	40°00'23.774"N	80°37'23.453"W	1203.40	89.308	8.26	0.13	-22.96
5872.00	20.150	50.440	5663.29	-307.22	23.61	1216.27	1745948.00	14529370.40	40°00'23.864"N	80°37'23.286"W	1216.50	88.888	7.32	-2.20	-19.82
5917.00	19.440	42.450	5705.64	-300.14	34.07	1227.30	1745959.03	14529380.86	40°00'23.966"N	80°37'23.144"W	1227.78	88.410	6.21	-1.58	-17.76
5962.00	19.100	33.210	5748.13	-291.36	45.76	1236.39	1745968.11	14529392.54	40°00'24.082"N	80°37'23.026"W	1237.24	87.880	6.81	-0.76	-20.53
6007.00	19.730	25.220	5790.58	-280.78	58.79	1243.66	1745975.38	14529405.57	40°00'24.210"N	80°37'22.932"W	1245.05	87.293	6.06	1.40	-17.76
6053.00	21.180	18.070	5833.69	-268.01	73.72	1249.55	1745981.26	14529420.49	40°00'24.357"N	80°37'22.856"W	1251.72	86.624	6.27	3.15	-15.54
6098.00	22.590	11.070	5875.45	-253.54	89.94	1253.73	1745985.44	14529436.70	40°00'24.517"N	80°37'22.801"W	1256.95	85.897	6.59	3.13	-15.56
6143.00	23.680	5.520	5916.83	-237.40	107.42	1256.26	1745987.97	14529454.17	40°00'24.690"N	80°37'22.767"W	1260.85	85.113	5.41	2.42	-12.33
6188.00	25.550	3.260	5957.74	-219.80	126.10	1257.68	1745989.39	14529472.85	40°00'24.875"N	80°37'22.748"W	1263.99	84.274	4.65	4.16	-5.02
6290.00	31.190	3.820	6047.46	-174.08	174.45	1260.70	1745992.41	14529521.19	40°00'25.352"N	80°37'22.707"W	1272.71	82.122	5.54	5.53	0.55
6380.00	36.650	2.980	6122.11	-126.64	224.57	1263.65	1745995.36	14529571.28	40°00'25.848"N	80°37'22.666"W	1283.45	79.923	6.09	6.07	-0.93
6470.00	43.870	1.860	6190.75	-71.40	282.64	1266.06	1745997.77	14529629.33	40°00'26.421"N	80°37'22.632"W	1297.23	77.415	8.06	8.02	-1.24
6561.00	51.140	359.000	6252.19	-6.99	349.68	1266.47	1745998.17	14529696.34	40°00'27.084"N	80°37'22.623"W	1313.85	74.565	8.32	7.99	-3.14
6653.00	59.330	355.450	6304.61	66.61	425.08	1262.69	1745994.40	14529771.71	40°00'27.829"N	80°37'22.668"W	1332.33	71.394	9.45	8.90	-3.86
6721.00	69.580	349.420	6333.92	127.24	485.76	1254.50	1745986.21	14529832.37	40°00'28.429"N	80°37'22.770"W	1345.26	68.833	17.06	15.07	-8.87
6743.00	73.100	347.500	6340.96	148.02	506.18	1250.32	1745982.04	14529852.78	40°00'28.631"N	80°37'22.822"W	1348.90	67.960	18.01	16.00	-8.73
6789.00	79.670	344.080	6351.78	192.67	549.54	1239.57	1745971.29	14529896.13	40°00'29.060"N	80°37'22.958"W	1355.92	66.091	15.47	14.28	-6.13
6834.00	80.270	341.470	6359.62	236.97	591.93	1226.67	1745958.39	14529938.50	40°00'29.479"N	80°37'23.121"W	1362.02	64.240	7.15	1.33	-7.13
6879.00	80.640	338.850	6367.08	281.23	633.67	1211.61	1745943.34	14529980.22	40°00'29.892"N	80°37'23.313"W	1367.31	62.391	5.80	0.82	-5.82
6924.00	85.250	335.910	6372.61	325.55	674.87	1194.43	1745926.17	14530021.41	40°00'30.300"N	80°37'23.531"W	1371.91	60.533	12.14	10.27	-6.53

REFERENCE WELLPATH IDENTIFICATION

Operator	Slot	Slot #205
SOUTHWESTERN ENERGY	Well	BW Edge MSH 205H
Area	Wellbore	BW Edge MSH 205H AWB
Field		
Facility		

WELLPATH DATA (187 stations)

MD (ft)	Inclination (°)	Azimuth (°)	TVD (ft)	Vert Sect (ft)	North (ft)	East (ft)	Grid East [US ft]	Grid North [US ft]	Latitude	Longitude	Closure Dist (ft)	Closure Dir (°)	DLS (°/100ft)	Build Rate (°/100ft)	Turn Rate (°/100ft)
6969.00	89.970	334.400	6374.48	369.93	715.66	1175.55	1745907.29	14530062.18	40°00'30.704"N	80°37'23.772"W	1376.26	58.667	10.99	10.47	-3.36
7015.00	90.550	335.080	6374.27	415.30	757.26	1155.92	1745887.67	14530103.77	40°00'31.116"N	80°37'24.022"W	1381.88	56.771	1.94	1.26	1.48
7105.00	90.680	336.060	6373.31	504.26	839.20	1118.70	1745850.46	14530185.67	40°00'31.927"N	80°37'24.496"W	1398.48	53.124	1.10	0.14	1.09
7195.00	90.650	334.470	6372.26	593.14	920.93	1081.04	1745812.82	14530267.37	40°00'32.737"N	80°37'24.975"W	1420.13	49.573	1.77	-0.03	-1.77
7286.00	90.650	335.440	6371.23	682.94	1003.37	1042.52	1745774.32	14530349.78	40°00'33.553"N	80°37'25.466"W	1446.93	46.096	1.07	0.00	1.07
7376.00	90.710	337.120	6370.16	772.06	1085.76	1006.32	1745738.13	14530432.13	40°00'34.369"N	80°37'25.926"W	1480.39	42.826	1.87	0.07	1.87
7466.00	90.770	335.140	6369.00	861.14	1168.05	969.91	1745701.73	14530514.39	40°00'35.183"N	80°37'26.390"W	1518.24	39.705	2.20	0.07	-2.20
7557.00	90.650	336.330	6367.87	951.13	1251.00	932.52	1745664.35	14530597.31	40°00'36.005"N	80°37'26.866"W	1560.32	36.701	1.31	-0.13	1.31
7647.00	90.800	338.690	6366.73	1040.49	1334.14	898.09	1745629.94	14530680.42	40°00'36.828"N	80°37'27.304"W	1608.26	33.947	2.63	0.17	2.62
7737.00	90.650	341.630	6365.59	1130.24	1418.79	867.55	1745599.42	14530765.03	40°00'37.666"N	80°37'27.692"W	1663.01	31.445	3.27	-0.17	3.27
7827.00	90.770	340.940	6364.48	1220.11	1504.02	838.68	1745570.55	14530850.23	40°00'38.509"N	80°37'28.058"W	1722.05	29.145	0.78	0.13	-0.77
7918.00	90.370	336.430	6363.57	1310.65	1588.77	805.61	1745537.50	14530934.95	40°00'39.348"N	80°37'28.479"W	1781.35	26.888	4.98	-0.44	-4.96
8008.00	90.400	332.800	6362.97	1399.37	1670.06	767.04	1745498.94	14531016.21	40°00'40.153"N	80°37'28.970"W	1837.79	24.669	4.03	0.03	-4.03
8098.00	90.370	331.480	6362.36	1487.36	1749.63	724.98	1745456.90	14531095.75	40°00'40.941"N	80°37'29.506"W	1893.88	22.507	1.47	-0.03	-1.47
8189.00	90.250	330.130	6361.87	1575.85	1829.07	680.59	1745412.53	14531175.15	40°00'41.728"N	80°37'30.072"W	1951.59	20.410	1.49	-0.13	-1.48
8279.00	90.430	331.720	6361.33	1663.42	1907.72	636.86	1745368.81	14531253.78	40°00'42.507"N	80°37'30.630"W	2011.21	18.461	1.78	0.20	1.77
8370.00	90.220	335.630	6360.82	1752.86	1989.27	596.51	1745328.48	14531335.29	40°00'43.314"N	80°37'31.144"W	2076.78	16.692	4.30	-0.23	4.30
8460.00	90.280	335.610	6360.43	1841.83	2071.24	559.36	1745291.34	14531417.23	40°00'44.126"N	80°37'31.617"W	2145.44	15.113	0.07	0.07	-0.02
8551.00	90.460	334.220	6359.84	1931.62	2153.65	520.78	1745252.78	14531499.61	40°00'44.942"N	80°37'32.109"W	2215.72	13.594	1.54	0.20	-1.53
8641.00	90.890	332.650	6358.78	2020.01	2234.14	480.54	1745212.55	14531580.07	40°00'45.739"N	80°37'32.621"W	2285.24	12.139	1.81	0.48	-1.74
8731.00	90.950	329.720	6357.33	2107.66	2312.98	437.17	1745169.20	14531658.88	40°00'46.520"N	80°37'33.175"W	2353.93	10.703	3.26	0.07	-3.26
8821.00	90.800	334.350	6355.96	2195.58	2392.44	394.98	1745127.03	14531738.31	40°00'47.307"N	80°37'33.712"W	2424.83	9.375	5.15	-0.17	5.14
8912.00	90.800	334.470	6354.69	2285.23	2474.51	355.68	1745087.74	14531820.34	40°00'48.120"N	80°37'34.213"W	2499.94	8.180	1.29	0.00	0.13
9002.00	90.890	333.310	6353.36	2373.75	2555.31	316.08	1745048.15	14531901.12	40°00'48.920"N	80°37'34.718"W	2574.79	7.051	0.13	0.10	-1.29
9092.00	90.890	335.590	6351.96	2462.42	2636.49	277.27	1745009.36	14531982.27	40°00'49.724"N	80°37'35.212"W	2651.03	6.003	2.53	0.00	2.53
9183.00	90.770	337.630	6350.64	2552.59	2720.00	241.15	1744973.25	14532065.74	40°00'50.550"N	80°37'35.672"W	2730.67	5.066	2.25	-0.13	2.24
9274.00	90.340	338.700	6349.79	2643.07	2804.47	207.30	1744939.42	14532150.18	40°00'51.387"N	80°37'36.102"W	2812.12	4.228	1.28	-0.51	1.18
9364.00	90.220	339.260	6349.37	2732.69	2888.48	175.02	1744907.15	14532234.15	40°00'52.218"N	80°37'36.513"W	2893.78	3.467	0.63	-0.10	0.62
9454.00	90.460	340.820	6348.83	2822.44	2973.07	144.30	1744876.44	14532318.71	40°00'53.055"N	80°37'36.903"W	2976.57	2.779	1.75	0.27	1.73
9544.00	90.480	340.360	6348.11	2912.25	3057.95	114.39	1744846.55	14532403.56	40°00'53.895"N	80°37'37.283"W	3060.09	2.142	0.51	0.00	-0.51

REFERENCE WELLPATH IDENTIFICATION

Operator	SOUTHWESTERN ENERGY	Slot	Slot #205
Area	Marshall County, WV	Well	BW Edge MSH 205H
Field	Marshall	Wellbore	BW Edge MSH 205H AWB
Facility	BW Edge MSH Pad		

WELLPATH DATA (187 stations)

MD	Inclination [°]	Azimuth [°]	TVD [ft]	Vert Sect [ft]	North [ft]	East [ft]	Grid East [US ft]	Grid North [US ft]	Latitude	Longitude	Closure Dist [ft]	Closure Dir [°]	DLS [°/100ft]	Build Rate [°/100ft]	Turn Rate [°/100ft]
9635.00	90.580	340.540	6347.29	3003.05	3143.70	83.94	1744816.11	14532489.28	40°00'54.744"N	80°37'37.669"W	3144.82	1.530	0.24	0.13	0.20
9726.00	90.710	340.160	6346.26	3093.83	3229.40	53.34	1744785.52	14532574.94	40°00'55.592"N	80°37'38.058"W	3229.84	0.946	0.44	0.14	-0.42
9816.00	90.890	335.550	6345.00	3183.24	3312.73	19.43	1744751.62	14532658.24	40°00'56.417"N	80°37'38.490"W	3312.78	0.336	5.13	0.20	-5.12
9906.00	90.550	333.180	6343.87	3271.89	3393.86	-19.50	1744712.71	14532739.33	40°00'57.220"N	80°37'38.986"W	3393.91	359.671	2.66	-0.38	-2.63
9997.00	90.520	334.030	6343.02	3361.31	3475.36	-59.95	1744672.27	14532820.87	40°00'58.028"N	80°37'39.501"W	3475.88	359.012	0.93	-0.03	0.93
10087.00	90.460	332.270	6342.25	3449.62	3555.66	-100.60	1744631.64	14532901.07	40°00'58.823"N	80°37'40.019"W	3557.08	358.379	1.96	-0.07	-1.96
10177.00	90.460	333.440	6341.53	3537.84	3635.74	-141.66	1744590.60	14532981.12	40°00'59.616"N	80°37'40.543"W	3638.50	357.769	1.30	0.00	1.30
10268.00	90.580	332.750	6340.71	3627.11	3716.89	-182.84	1744549.43	14533062.24	40°01'00.419"N	80°37'41.067"W	3721.38	357.184	0.77	0.13	-0.76
10358.00	90.550	330.750	6339.82	3714.96	3796.16	-225.43	1744506.86	14533141.48	40°01'01.205"N	80°37'41.611"W	3802.84	356.602	2.22	-0.03	-2.22
10449.00	90.580	330.820	6338.92	3803.46	3875.58	-269.85	1744462.46	14533220.87	40°01'01.991"N	80°37'42.177"W	3884.96	356.017	0.08	0.03	0.08
10539.00	90.400	334.950	6338.15	3891.66	3955.67	-310.85	1744421.47	14533300.92	40°01'02.784"N	80°37'42.700"W	3967.86	355.507	4.59	-0.20	4.59
10630.00	90.770	333.220	6337.22	3981.23	4037.51	-350.62	1744381.72	14533382.73	40°01'03.595"N	80°37'43.207"W	4052.70	355.037	1.94	0.41	-1.90
10720.00	90.710	329.590	6336.06	4068.95	4116.51	-393.69	1744338.67	14533461.71	40°01'04.377"N	80°37'43.756"W	4135.29	354.537	4.03	-0.07	-4.03
10810.00	90.490	331.100	6335.12	4156.30	4194.72	-438.21	1744294.16	14533539.88	40°01'05.152"N	80°37'44.324"W	4217.54	354.036	1.70	-0.24	1.68
10901.00	90.520	330.760	6334.31	4244.84	4274.25	-482.43	1744249.96	14533619.38	40°01'05.940"N	80°37'44.888"W	4301.39	353.560	0.38	0.03	-0.37
10991.00	90.680	331.840	6333.37	4332.55	4353.19	-525.64	1744206.76	14533698.29	40°01'06.722"N	80°37'45.439"W	4384.81	353.115	1.21	0.18	1.20
11082.00	90.740	335.640	6332.24	4421.99	4434.77	-565.89	1744166.53	14533779.85	40°01'07.529"N	80°37'45.952"W	4470.73	352.728	4.18	0.07	4.18
11172.00	90.520	337.280	6331.25	4511.15	4517.28	-601.84	1744130.60	14533862.32	40°01'08.346"N	80°37'46.410"W	4557.19	352.411	1.84	-0.24	1.82
11262.00	90.710	337.950	6330.29	4600.54	4600.49	-636.11	1744096.34	14533945.50	40°01'09.170"N	80°37'46.846"W	4644.26	352.128	0.77	0.21	0.74
11352.00	91.080	335.190	6328.88	4689.71	4683.05	-671.89	1744060.57	14534028.03	40°01'09.987"N	80°37'47.301"W	4731.00	351.835	3.09	0.41	-3.07
11443.00	90.770	334.690	6327.41	4779.50	4765.47	-710.43	1744022.05	14534110.42	40°01'10.803"N	80°37'47.792"W	4818.14	351.521	0.65	-0.34	-0.55
11534.00	91.080	336.570	6325.94	4869.45	4848.35	-747.97	1743984.52	14534193.26	40°01'11.624"N	80°37'48.271"W	4905.71	351.230	2.09	0.34	2.07
11624.00	91.140	335.880	6324.20	4958.55	4930.70	-784.24	1743948.26	14534275.57	40°01'12.439"N	80°37'48.732"W	4992.67	350.963	0.77	0.07	-0.77
11714.00	91.140	332.940	6322.41	5047.20	5011.84	-823.11	1743909.41	14534356.69	40°01'13.243"N	80°37'49.228"W	5078.98	350.673	3.27	0.00	-3.27
11804.00	91.260	333.930	6320.52	5135.58	5092.32	-863.35	1743869.19	14534437.14	40°01'14.040"N	80°37'49.741"W	5164.99	350.378	1.11	0.13	1.10
11895.00	91.140	334.730	6318.62	5225.19	5174.32	-902.76	1743829.79	14534519.11	40°01'14.852"N	80°37'50.243"W	5252.48	350.103	0.89	-0.13	0.88
11985.00	91.200	335.660	6316.78	5314.05	5256.00	-940.51	1743792.06	14534600.75	40°01'15.660"N	80°37'50.724"W	5339.48	349.855	1.04	0.07	1.03
12076.00	90.890	336.460	6315.21	5404.10	5339.16	-977.43	1743755.15	14534683.88	40°01'16.484"N	80°37'51.194"W	5427.89	349.626	0.94	-0.34	0.88
12167.00	90.460	336.100	6314.05	5494.21	5422.46	-1014.03	1743718.57	14534767.15	40°01'17.308"N	80°37'51.660"W	5516.46	349.408	0.62	-0.47	-0.40
12257.00	90.430	336.340	6313.05	5583.33	5504.82	-1050.32	1743682.29	14534849.48	40°01'18.124"N	80°37'52.122"W	5604.13	349.198	0.27	-0.03	0.27

019
ent of
tection

REFERENCE WELLPATH IDENTIFICATION

Operator	Slot	Slot #205
SOUTHWESTERN ENERGY	Well	BW Edge MSH 205H
Area	Wellbore	BW Edge MSH 205H AWB
Field		
Facility		

WELLPATH DATA (187 stations)

MD [ft]	Inclination [°]	Azimuth [°]	TVD [ft]	Vert Sect [ft]	North [ft]	East [ft]	Grid East [US ft]	Grid North [US ft]	Latitude	Longitude	Closure Dist [ft]	Closure Dir [°]	DLS ["/100ft]	Build Rate ["/100ft]	Turn Rate ["/100ft]
12347.00	90.430	339.350	6312.67	5672.75	5588.16	-1084.25	1743648.37	14534932.79	40°01'18.949"N	80°37'52.554"W	5692.38	349.020	3.34	0.00	3.34
12437.00	90.580	338.480	6311.88	5762.35	5672.13	-1116.63	1743616.00	14535016.72	40°01'19.780"N	80°37'52.965"W	5781.00	348.863	0.98	0.17	-0.97
12528.00	90.460	337.400	6311.06	5852.80	5756.47	-1150.81	1743581.84	14535101.02	40°01'20.615"N	80°37'53.400"W	5870.37	348.695	1.19	-0.13	-1.19
12618.00	90.490	334.650	6310.31	5941.86	5838.69	-1187.37	1743545.29	14535183.22	40°01'21.429"N	80°37'53.866"W	5958.20	348.505	3.06	0.03	-3.06
12708.00	90.620	333.900	6309.44	6030.49	5919.77	-1226.43	1743506.24	14535264.26	40°01'22.232"N	80°37'54.363"W	6045.48	348.295	0.85	0.14	-0.83
12799.00	90.550	338.000	6308.51	6120.51	6002.85	-1263.51	1743469.18	14535347.31	40°01'23.054"N	80°37'54.836"W	6134.38	348.114	4.51	-0.08	4.51
12889.00	90.620	341.550	6307.59	6210.22	6087.28	-1294.62	1743438.09	14535431.71	40°01'23.890"N	80°37'55.231"W	6223.42	347.993	3.95	0.08	3.94
12979.00	90.620	342.820	6306.61	6300.15	6172.96	-1322.15	1743410.56	14535517.35	40°01'24.738"N	80°37'55.580"W	6312.96	347.911	1.41	0.00	1.41
13070.00	90.710	338.230	6305.56	6390.93	6258.72	-1352.48	1743380.25	14535603.08	40°01'25.586"N	80°37'55.966"W	6403.19	347.806	5.04	0.10	-4.19
13160.00	90.680	334.460	6304.47	6480.05	6341.14	-1388.58	1743344.16	14535685.47	40°01'26.402"N	80°37'56.425"W	6491.39	347.648	4.19	-0.03	-4.19
13251.00	90.770	333.600	6303.31	6569.59	6422.94	-1428.43	1743304.33	14535767.24	40°01'27.212"N	80°37'56.933"W	6579.86	347.462	0.95	0.10	-0.95
13341.00	90.710	330.880	6302.15	6657.60	6502.57	-1470.34	1743262.44	14535846.84	40°01'28.021"N	80°37'57.468"W	6666.73	347.259	3.02	-0.07	-3.02
13432.00	90.770	329.560	6300.98	6745.87	6581.54	-1515.53	1743217.26	14535925.78	40°01'28.783"N	80°37'58.044"W	6753.78	347.033	1.45	0.07	-1.45
13522.00	90.830	329.020	6299.72	6832.81	6658.91	-1561.49	1743171.32	14536003.12	40°01'29.550"N	80°37'58.631"W	6839.55	346.803	0.60	0.07	-0.60
13612.00	90.740	332.200	6298.49	6920.25	6737.31	-1605.65	1743127.18	14536081.49	40°01'30.326"N	80°37'59.195"W	6926.00	346.595	3.53	-0.10	3.53
13703.00	90.830	335.530	6297.24	7009.73	6818.99	-1645.72	1743087.12	14536163.13	40°01'31.135"N	80°37'59.705"W	7014.77	346.431	3.66	0.10	3.66
13793.00	90.740	335.040	6296.01	7098.62	6900.74	-1683.35	1743049.51	14536244.85	40°01'31.944"N	80°38'00.185"W	7103.09	346.291	0.55	-0.10	-0.54
13884.00	90.740	335.750	6294.83	7188.53	6983.47	-1721.23	1743011.64	14536327.55	40°01'32.763"N	80°38'00.667"W	7192.46	346.154	0.78	0.00	0.78
13974.00	90.800	336.770	6293.62	7277.64	7065.84	-1757.46	1742975.42	14536409.89	40°01'33.579"N	80°38'01.129"W	7281.13	346.032	1.14	0.07	1.13
14065.00	90.800	337.450	6292.35	7367.93	7149.67	-1792.85	1742940.05	14536493.68	40°01'34.409"N	80°38'01.579"W	7371.03	345.923	0.75	0.00	0.75
14155.00	90.800	338.250	6291.09	7457.35	7233.02	-1826.78	1742906.13	14536577.00	40°01'35.234"N	80°38'02.011"W	7460.14	345.826	0.89	0.00	0.89
14246.00	90.770	338.150	6289.85	7547.84	7317.50	-1860.57	1742872.35	14536661.45	40°01'36.070"N	80°38'02.441"W	7550.34	345.734	0.11	-0.03	-0.11
14337.00	90.580	336.870	6288.78	7638.20	7401.57	-1895.38	1742837.56	14536745.49	40°01'36.902"N	80°38'02.884"W	7640.40	345.636	1.42	-0.21	-1.41
14427.00	90.550	334.850	6287.89	7727.22	7483.70	-1932.18	1742800.77	14536827.58	40°01'37.715"N	80°38'03.353"W	7729.10	345.523	2.24	-0.03	-2.24
14517.00	90.370	334.670	6287.17	7815.99	7565.10	-1970.56	1742762.41	14536908.95	40°01'38.521"N	80°38'03.842"W	7817.53	345.400	0.28	-0.20	-0.20
14608.00	90.340	334.360	6286.60	7905.67	7647.24	-2009.71	1742723.27	14536991.07	40°01'39.335"N	80°38'04.341"W	7906.91	345.275	0.34	-0.03	-0.34
14698.00	90.490	335.000	6285.95	7994.41	7728.60	-2048.20	1742684.80	14537072.38	40°01'40.140"N	80°38'04.831"W	7995.39	345.157	0.73	0.17	0.71
14788.00	90.490	334.910	6285.18	8083.23	7810.13	-2086.30	1742646.71	14537153.89	40°01'40.947"N	80°38'05.316"W	8083.98	345.044	0.10	0.00	-0.10
14879.00	90.460	335.180	6284.43	8173.05	7892.63	-2124.69	1742608.33	14537236.36	40°01'41.764"N	80°38'05.806"W	8173.61	344.933	0.30	-0.03	0.30
14969.00	90.180	334.920	6283.92	8261.89	7974.23	-2162.66	1742570.39	14537317.92	40°01'42.572"N	80°38'06.289"W	8262.29	344.826	0.42	-0.31	-0.29

REFERENCE WELLPATH IDENTIFICATION

Operator	Slot	Slot #205
SOUTHWESTERN ENERGY	Well	BW Edge MSH 205H
Area	Wellbore	BW Edge MSH 205H AWB
Field		
Facility		

WELLPATH DATA (187 stations)

MD [ft]	Inclination [°]	Azimuth [°]	TVD [ft]	Vert Sect [ft]	North [ft]	East [ft]	Grid East [US ft]	Grid North [US ft]	Latitude	Longitude	Closure Dist [ft]	Closure Dir [°]	DLS [°/100ft]	Build Rate [°/100ft]	Turn Rate [°/100ft]
15059.00	90.370	333.560	6283.49	8350.51	8055.28	-2201.77	1742531.29	14537398.95	40°01'43.375"N	80°38'06.788"W	8350.77	344.713	1.53	0.21	-1.51
15150.00	90.400	333.620	6282.88	8439.94	8136.79	-2242.24	1742490.83	14537480.42	40°01'44.182"N	80°38'07.304"W	8440.08	344.593	0.07	0.03	0.07
15240.00	90.490	334.160	6282.18	8528.46	8217.60	-2281.85	1742451.24	14537561.20	40°01'44.982"N	80°38'07.809"W	8528.53	344.481	0.61	0.10	0.60
15330.00	90.490	334.090	6281.41	8617.06	8298.57	-2321.13	1742411.98	14537642.14	40°01'45.784"N	80°38'08.309"W	8617.07	344.374	0.08	0.00	-0.08
15421.00	90.520	330.510	6280.61	8706.06	8379.13	-2363.42	1742369.70	14537722.66	40°01'46.582"N	80°38'08.849"W	8706.06	344.248	3.93	0.03	-3.93
15508.00	90.520	331.710	6279.82	8790.78	8455.30	-2405.45	1742327.69	14537798.80	40°01'47.336"N	80°38'09.385"W	8790.80	344.119	1.38	0.00	1.38
15533.00	90.520	331.710	6279.59	8815.18	8477.31	-2417.30	1742315.84	14537820.81	40°01'47.554"N	80°38'09.536"W	8815.22	344.085	0.00	0.00	0.00

HOLE & CASING SECTIONS - Ref Wellbore: BW Edge MSH 205H AWB Ref Wellpath: BW Edge MSH 205H AWP Proj: 15533'MD

String/Diameter	Start MD [ft]	End MD [ft]	Interval [ft]	Start TVD [ft]	End TVD [ft]	Start N/S [ft]	End N/S [ft]	Start E/W [ft]	End E/W [ft]
20in Conductor	26.00	100.00	74.00	26.00	100.00	0.00	-0.10	0.00	0.00
17.5in Open Hole	100.00	800.00	700.00	100.00	799.99	-0.10	-0.73	0.00	-1.24
13.375in Casing Surface	26.00	800.00	774.00	26.00	799.99	0.00	-0.73	0.00	-1.24
12.25in Open Hole	800.00	2042.00	1242.00	799.99	2037.58	-0.73	-50.77	-1.24	51.18
9.625in Casing Intermediate	26.00	2042.00	2016.00	26.00	2037.58	0.00	-50.77	0.00	51.18
8.75in Open Hole	2042.00	6248.00	4206.00	2037.58	6011.10	-50.77	153.48	51.18	1259.33
8.5in Open Hole	6248.00	15533.00	9285.00	6011.10	6279.59	153.48	8477.31	1259.33	-2417.30

RECEIVED
Office of Oil and Gas
MAY 31 2019
WV Department of
Environmental Protection

REFERENCE WELLPATH IDENTIFICATION

Operator	SOUTHWESTERN ENERGY	Slot	Slot #205
Area	Marshall County, WV	Well	BW Edge MSH 205H
Field	Marshall	Wellbore	BW Edge MSH 205H AWB
Facility	BW Edge MSH Pad		

TARGETS

Name	TVD [ft]	North [ft]	East [ft]	Grid East [US ft]	Grid North [US ft]	Latitude	Longitude	Shape
BW Edge MSH 205H BHL Rev-3	6253.00	8484.09	-2390.70	1742342.43	14537827.59	40°01'47.620"N	80°38'09.194"W	point
BW Edge MSH 205H LP Rev-3	6370.00	729.11	1173.92	1745905.66	14530075.63	40°00'30.837"N	80°37'23.792"W	point

WELLPATH COMPOSITION - Ref Wellbore: BW Edge MSH 205H AWB Ref Wellpath: BW Edge MSH 205H AWP Proj: 15533'MD

Start MD [ft]	End MD [ft]	Positional Uncertainty Model	Log Name/Comment	Wellbore
26.00	6188.00	OWSG MWD rev2 + HRGM	01_Premier MWD <8.75"> (165'-6188')	BW Edge MSH 205H AWB
6188.00	15508.00	BHI AutoTrak Curve (Short)	02_AT Curve <8-1/2"> (6188')(6290'-15508')	BW Edge MSH 205H AWB
15508.00	15533.00	Blind Drilling (std)	Projection to bit	BW Edge MSH 205H AWB

RECEIVED
Office of Oil and Gas

MAY 31 2019

WV Department of
Environmental Protection

REFERENCE WELLPATH IDENTIFICATION

Operator	SOUTHWESTERN ENERGY	Slot	Slot #205
Area	Marshall County, WV	Well	BW Edge MSH 205H
Field	Marshall	Wellbore	BW Edge MSH 205H AWB
Facility	BW Edge MSH Pad		

COMMENTS

Wellpath general comments
API: 47-051-01982-0000
BH Job #: 109308151
Rig: SDC 42
Duration: 07/29/2018 - 08/01/2018

RECEIVED
Office of Oil and Gas

MAY 31 2019

WV Department of
Environmental Protection