



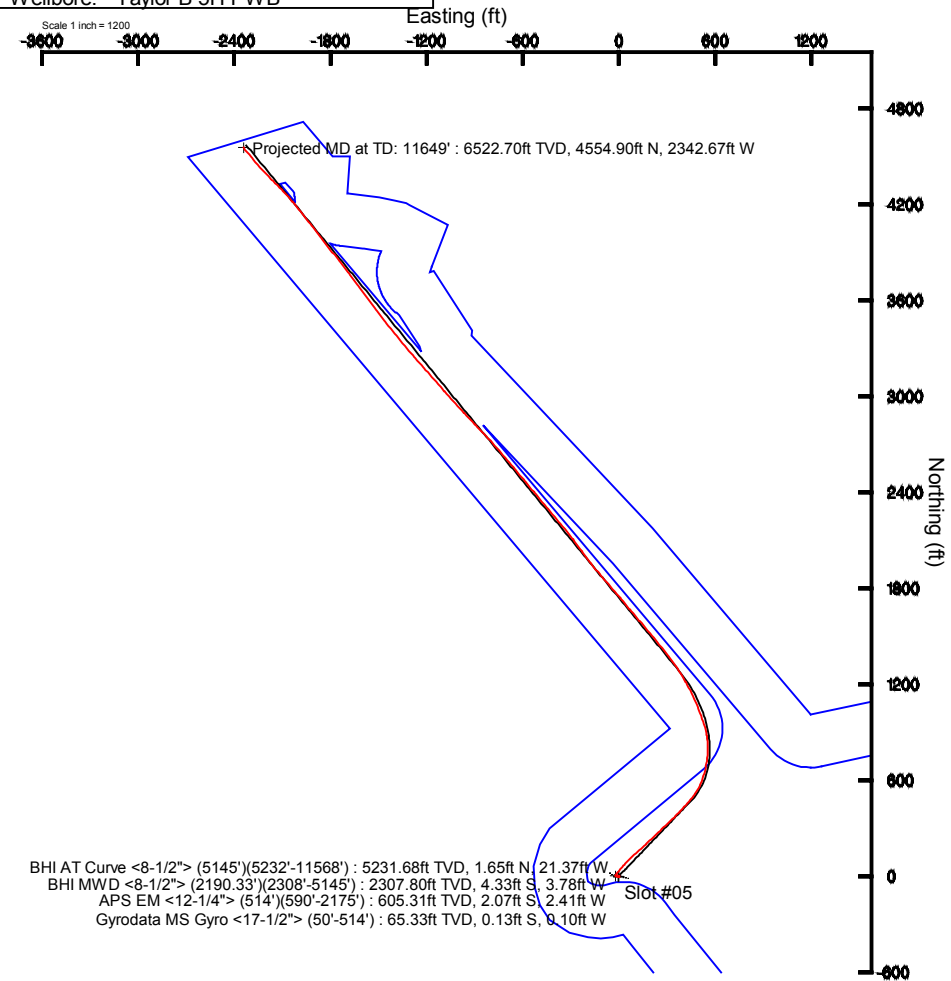
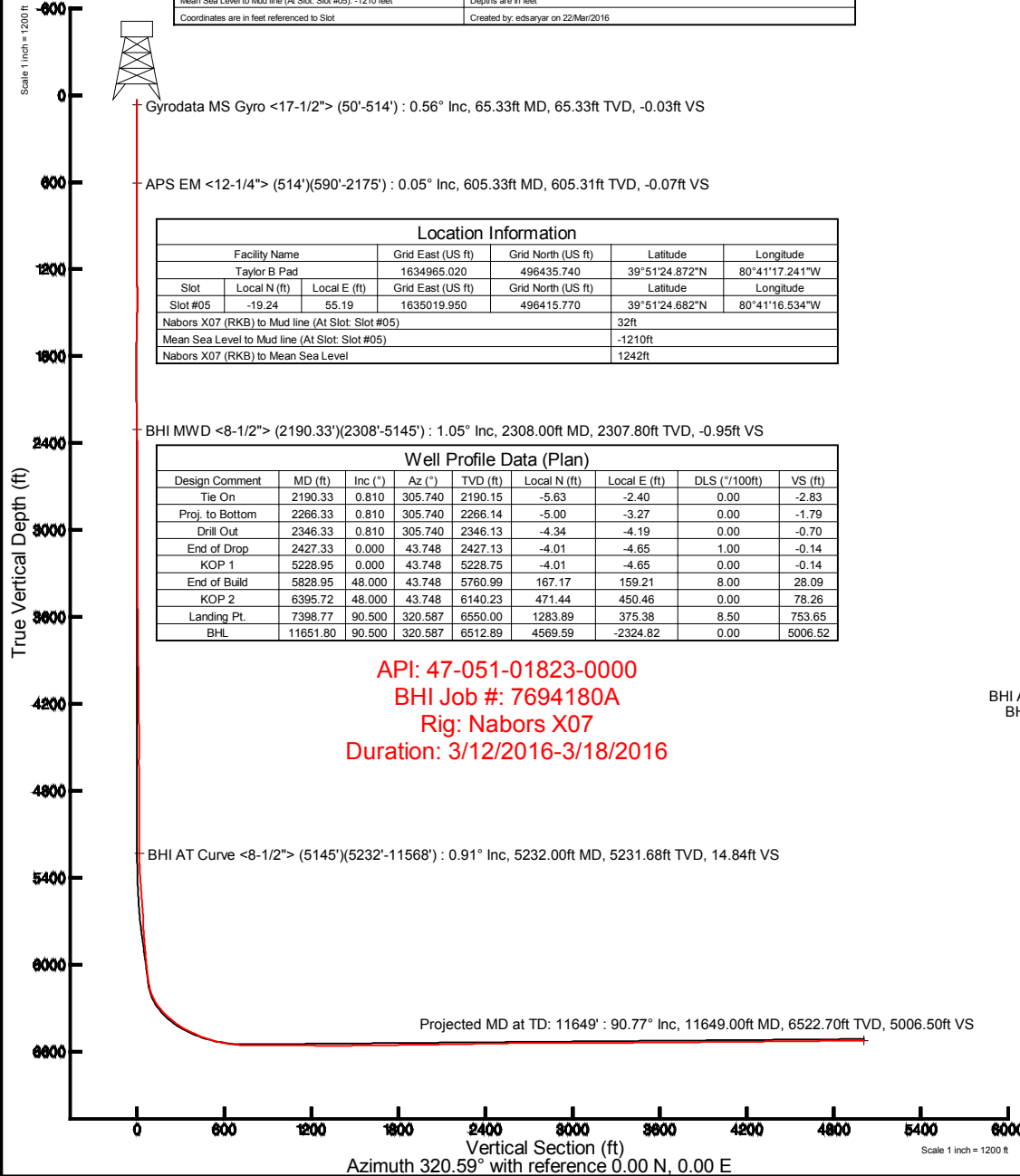
CHEVRON APPALACHIA, LLC

Location: Marshall County, WV
 Field: Marshall County
 Facility: Taylor B Pad

Slot: Slot #05
 Well: Taylor B 5H
 Wellbore: Taylor B 5H PWB



Plot reference wellpath is Taylor B 5H PWB Rev-B.0	
True vertical depths are referenced to Nabors X07 (RKB)	Grid System: NAD83 / Lambert West Virginia SP, Northern Zone (4701), US feet
Measured depths are referenced to Nabors X07 (RKB)	North Reference: True north
Nabors X07 (RKB) to Mean Sea Level: 1242 feet	Scale: True distance
Mean Sea Level to Mud line (At Slot: Slot #05): -1210 feet	Depths are in feet
Coordinates are in feet referenced to Slot	Created by: edsaryar on 22/Mar/2016



User specified (HDGM) Dip: 67.21° Field: 52784 nT
 Magnetic North is 7.98 degrees West of True North (at 23/Feb/2016)
 To correct azimuth from Magnetic to True subtract 7.98 degrees