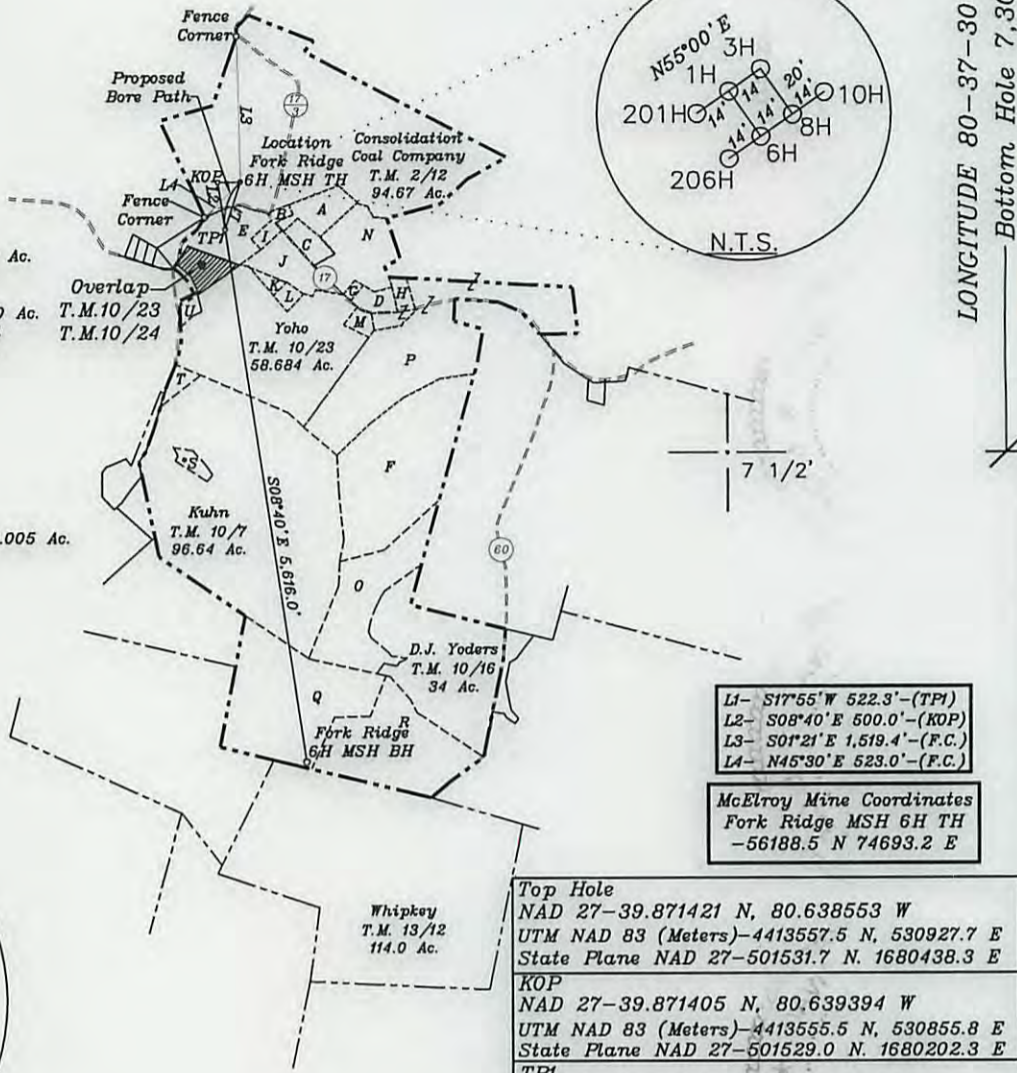


Top Hole 3,820'

LATITUDE 39-52-30 N Bottom Hole 3,135'



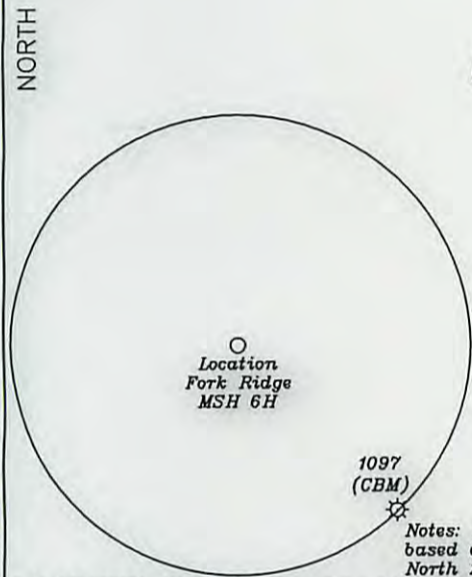
- A- Adams T.M. 10/25 5.172 Ac.
- B- Ward T.M. 10-28 0.64 Ac.
- C- Wade T.M. 10-25.1 2.84 Ac.
- D- Carmichael T.M. 10-23.5 2.025 Ac.
- E- Murray T.M. 10-24 12.06 Ac.
- F- Crow & Trans Energy Inc. T.M. 10-8 38.67 Ac.
- G- Carmichael T.M. 10-23.3 0.441 Ac.
- H- Fork Ridge Universalist Church T.M. 10-9
- I- Tezis Eastern Transmission T.M. 10-24.1 1.0 Ac.
- J- Ritchea D.B. 431-352 Residue of 3rd Parcel
- K- Consolidation Coal Co. T.M. 10-27 1.787 Ac.
- L- Howard T.M. 10-23.4 1.27 Ac.
- N- Murray T.M. 10-6 12.40 Ac.
- O- D.W. Yoders T.M. 10-16.1 19.85 Ac.
- P- Carey T.M. 10/10 108.46 Ac.
- Q- Lyons T.M. 10-18 32.0 Ac.
- R- D.J. Yoders T.M. 10-17 26.02 Ac.
- S- R. Lyons T.M. 10-7.2 1.501 Ac.
- T- J. Lyons T.M. 10-7.3 1.575 Ac.
- U- Texas Eastern Transmission T.M. 10-23.6 1.005 Ac.



- L1- S17°55'W 522.3'-(TPI)
- L2- S08°40'E 500.0'-(KOP)
- L3- S01°21'E 1,519.4'-(F.C.)
- L4- N45°30'E 523.0'-(F.C.)

McElroy Mine Coordinates
Fork Ridge MSH 6H TH
-56188.5 N 74693.2 E

Top Hole
NAD 27-39.871421 N, 80.638553 W
UTM NAD 83 (Meters)-4413557.5 N, 530927.7 E
State Plane NAD 27-501531.7 N, 1680438.3 E
KOP
NAD 27-39.871405 N, 80.639394 W
UTM NAD 83 (Meters)-4413555.5 N, 530855.8 E
State Plane NAD 27-501529.0 N, 1680202.3 E
TPI
NAD 27-39.870051 N, 80.639103 W
UTM NAD 83 (Meters)-4413405.3 N, 530881.2 E
State Plane NAD 27-501034.7 N, 1680277.6 E
Bottom Hole
NAD 27-39.854839 N, 80.635840 W
UTM NAD 83 (Meters)-4411718.1 N, 531167.1 E
State Plane NAD 27-495482.6 N, 1681123.2 E

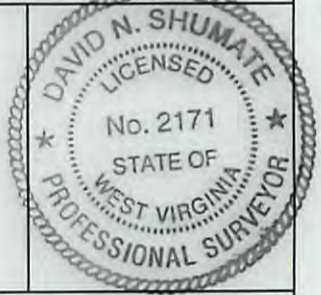


Notes: Ties to wells and corners are based on State Plane Grid North-WV North Zone NAD 27.

(+) DENOTES LOCATION OF WELL ON UNITED STATES TOPOGRAPHIC MAPS

FILE NO. _____
DRAWING NO. 1
SCALE 1" = 2000'
MINIMUM DEGREE OF ACCURACY 1 in 2500
PROVEN SOURCE OF ELEVATION GPS
submeter unit

I THE UNDERSIGNED, HEREBY CERTIFY THAT THIS PLAT IS CORRECT TO THE BEST OF MY KNOWLEDGE AND BELIEF AND SHOWS ALL THE INFORMATION REQUIRED BY LAW AND THE REGULATIONS ISSUED AND PRESCRIBED BY THE DEPARTMENT OF ENERGY.
(SIGNED) David N. Shumate
R.P.E. _____ L.L.S. 2171



STATE OF WEST VIRGINIA
Division of Environmental Protection
OFFICE OF OIL AND GAS

DATE August 9, 2012
OPERATOR'S WELL NO. Fork Ridge MSH 6H
API WELL NO. _____

WELL TYPE: OIL GAS LIQUID INJECTION WASTE DISPOSAL STATE 47 COUNTY 51 PERMIT 01584 H6A
(IF "GAS") PRODUCTION STORAGE DEEP SHALLOW

LOCATION: ELEVATION 1391' WATER SHED Middle Grave Creek
DISTRICT Camaron COUNTY Marshall
QUADRANGLE Glen Easton 7 1/2'

SURFACE OWNER Consolidation Coal Company ACREAGE 94.67
OIL & GAS ROYALTY OWNER Consolidation Coal Company LEASE ACREAGE 294.05 ac.
LEASE NO. 1-284746-001 thru 003 (TM.2-12), 1-312544-001 thru 007 (TM.10-24), 1-312491-000 (TM.10-23)
LEASE NO. DB.694-438 (TM.10-7), 1-295414-001 thru 002 (TM.10-18)

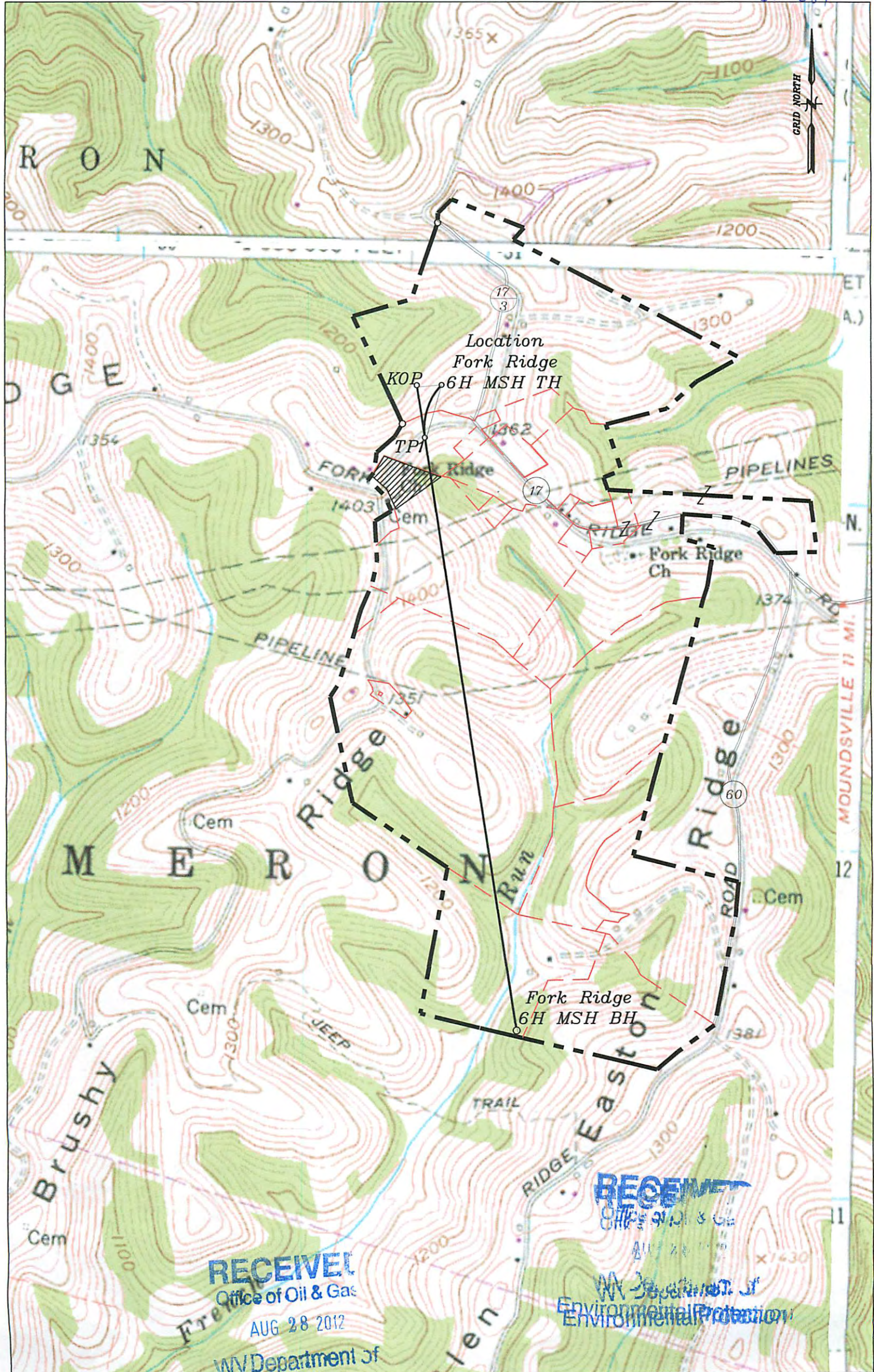
PROPOSED WORK: DRILL CONVERT DRILL DEEPER REDRILL FRACTURE OR STIMULATE PLUG OFF OLD FORMATION PERFORATE NEW FORMATION OTHER PHYSICAL CHANGE IN WELL (SPECIFY) _____

PLUG AND ABANDON CLEAN OUT AND REPLUG

TARGET FORMATION Marcellus ESTIMATED DEPTH TVD 6,815'+ Horizontal Leg, TMD 12,711'
WELL OPERATOR Chesapeake Appalachia, L.L.C. DESIGNATED AGENT Eric B. Gillespie
ADDRESS P.O. Box 18496 Oklahoma City, OK 73154-0496 ADDRESS P.O. Box 6070 Charleston, WV 25362

11/23/2012

5101584

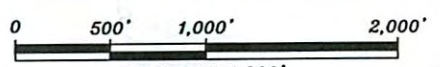


RECEIVED
Office of Oil & Gas
AUG 28 2012

RECEIVED
Office of Oil & Gas
AUG 28 2012
WV Department of Environmental Protection

Well: Fork Ridge MSH 8H
Quad: Glen Easton 7 1/2'
District: Cameron
County: Marshall

DmH
821-12



Scale: 1" = 1,000'
11/23/2012