

5101440P

WW-7
8-30-06



West Virginia Department of Environmental Protection
Office of Oil and Gas
WELL LOCATION FORM: GPS

API: 47-51-01440 WELL NO.: 1H

FARM NAME: Conner

RESPONSIBLE PARTY NAME: Chevron Appalachia, LLC

COUNTY: Marshall DISTRICT: Clay

QUADRANGLE: Businessburg 7.5'

SURFACE OWNER: Howard Bonar Conner (life)

ROYALTY OWNER: Howard Bonar Conner (life)

UTM GPS NORTHING: 4414549

UTM GPS EASTING: 521310 GPS ELEVATION: 1,233'

The Responsible Party named above has chosen to submit GPS coordinates in lieu of preparing a new well location plat for a plugging permit or assigned API number on the above well. The Office of Oil and Gas will not accept GPS coordinates that do not meet the following requirements:

1. Datum: NAD 1983, Zone: 17 North, Coordinate Units: meters, Altitude: height above mean sea level (MSL) – meters.
2. Accuracy to Datum – 3.05 meters
3. Data Collection Method:
Survey grade GPS : Post Processed Differential

Real-Time Differential

Mapping Grade GPS : Post Processed Differential

Real-Time Differential

4. Letter size copy of the topography map showing the well location.

I the undersigned, hereby certify this data is correct to the best of my knowledge and belief and shows all the information required by law and the regulations issued and prescribed by the Office of Oil and Gas.

Signature

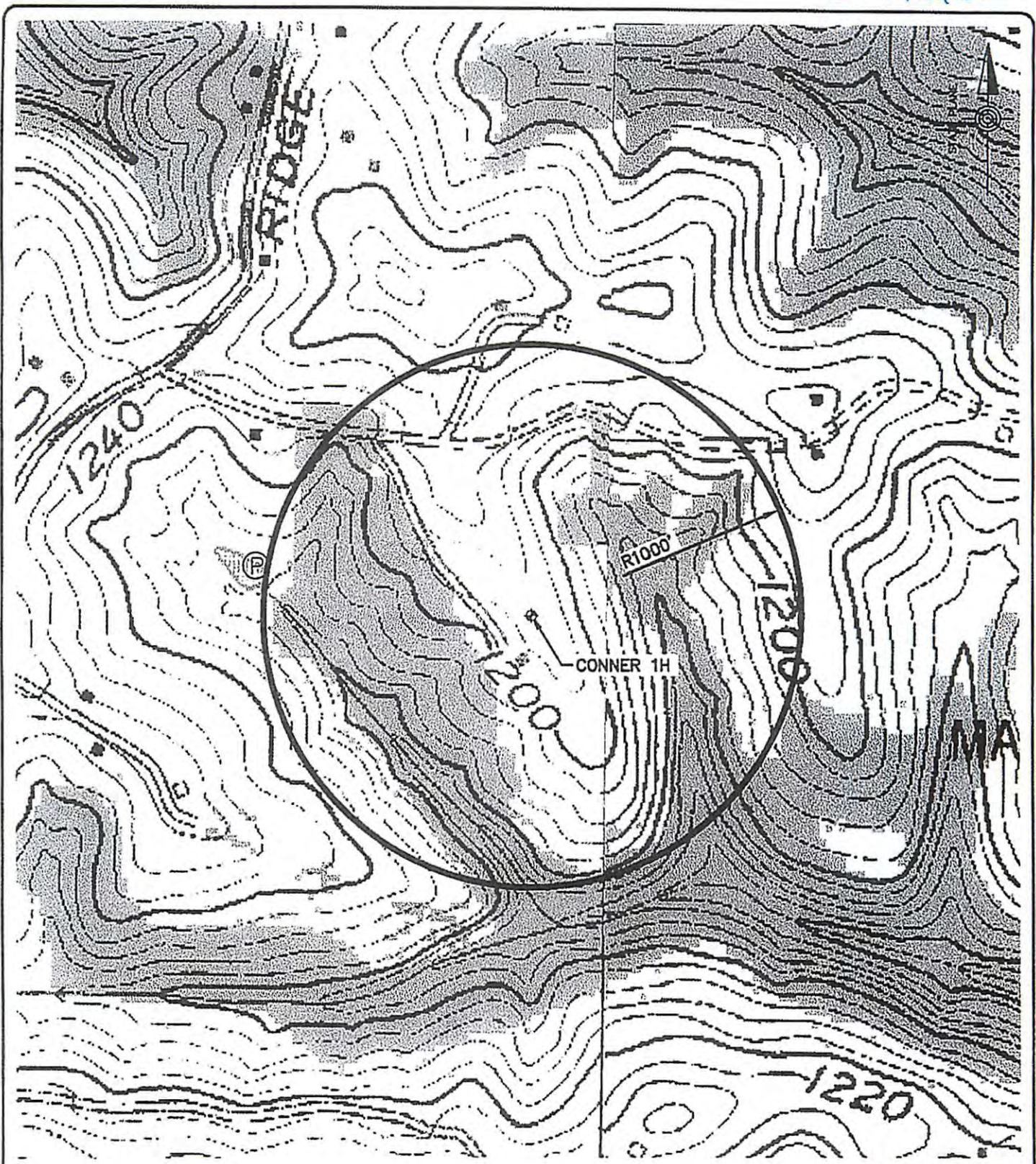
Permitting Team Lead
Title

05/03/2013
Date

Received
Office of Oil & Gas
MAY - 3 2013

05/17/2013

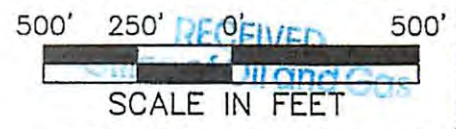
5101440F



NOTE:
 BUSINESSBURG 7.5'
 USGS QUADRANGLE

LEGEND

(P) LIVESTOCK POND



File name: C:\CH1_30\Project\000033_0445\Plan Set\LDN\0000330445.dwg, Layout: LM-01, Feb 06, 2011 - 11:11pm, 13x44

HRG
 HENNER, RAWAND & GRUNIG, INC.
 Engineering & Related Services

200 West Kensingler Drive, Suite 400
 Cranberry Township, PA 16066
 (724) 779-4777
 Fax: (724) 779-4711
 hrp@hrp-inc.com
 www.hrp-inc.com

CONNER 1H WELL PAD
 TOPOGRAPHIC LOCATION MAP
 FOR
 AB RESOURCES PA, LLC

MARSHALL COUNTY WEST VIRGINIA

PROJ. MGR. - KRM	DRAWING NO.
DESIGN - JRH/RAW	LM-01
CADD - JRH/RAW	
CHECKED -	
SCALE - 1" = 300'	
DATE - FEB. 06, 2011	PROJECT NO. 0000330445

05/17/2013