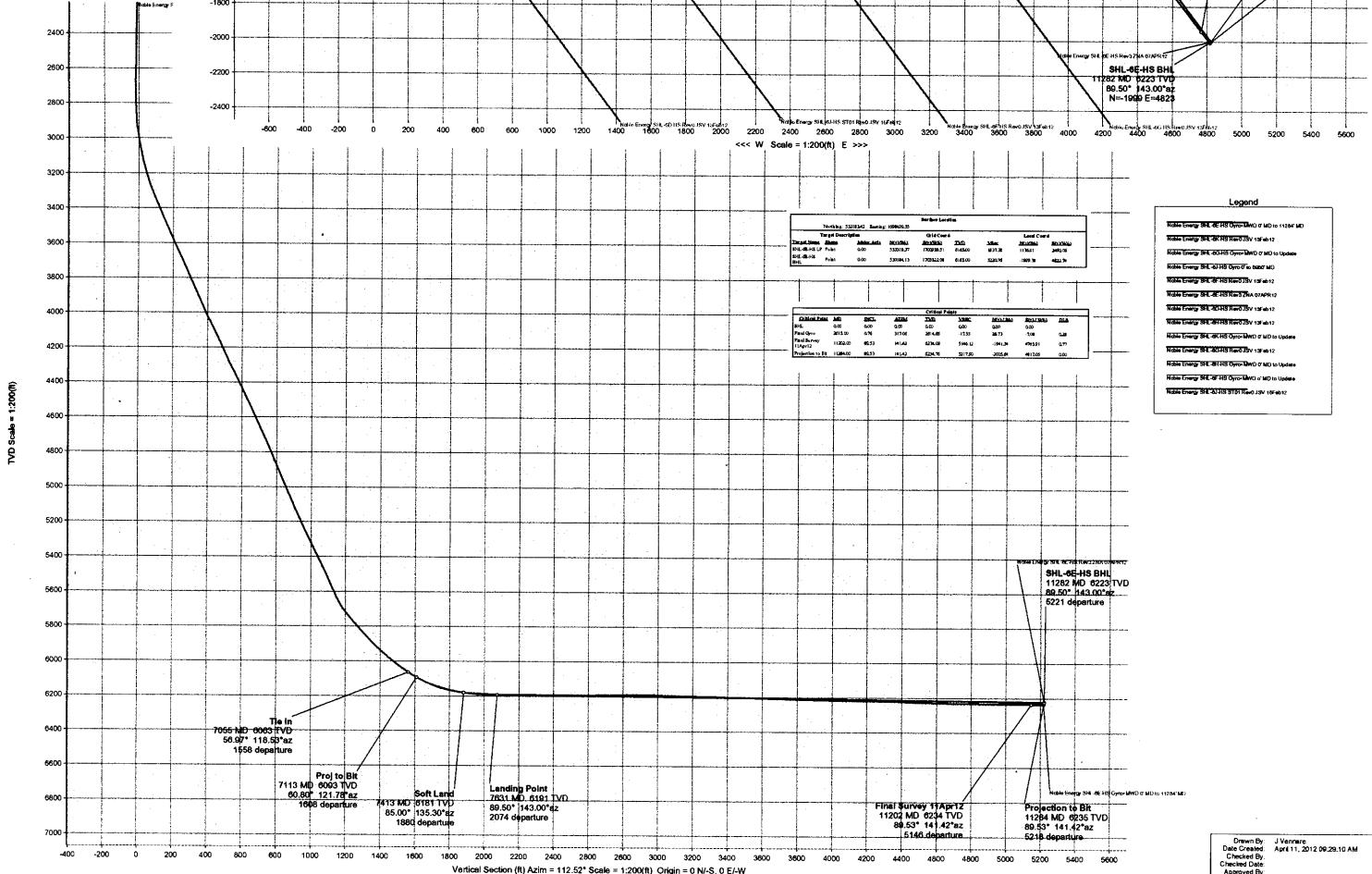
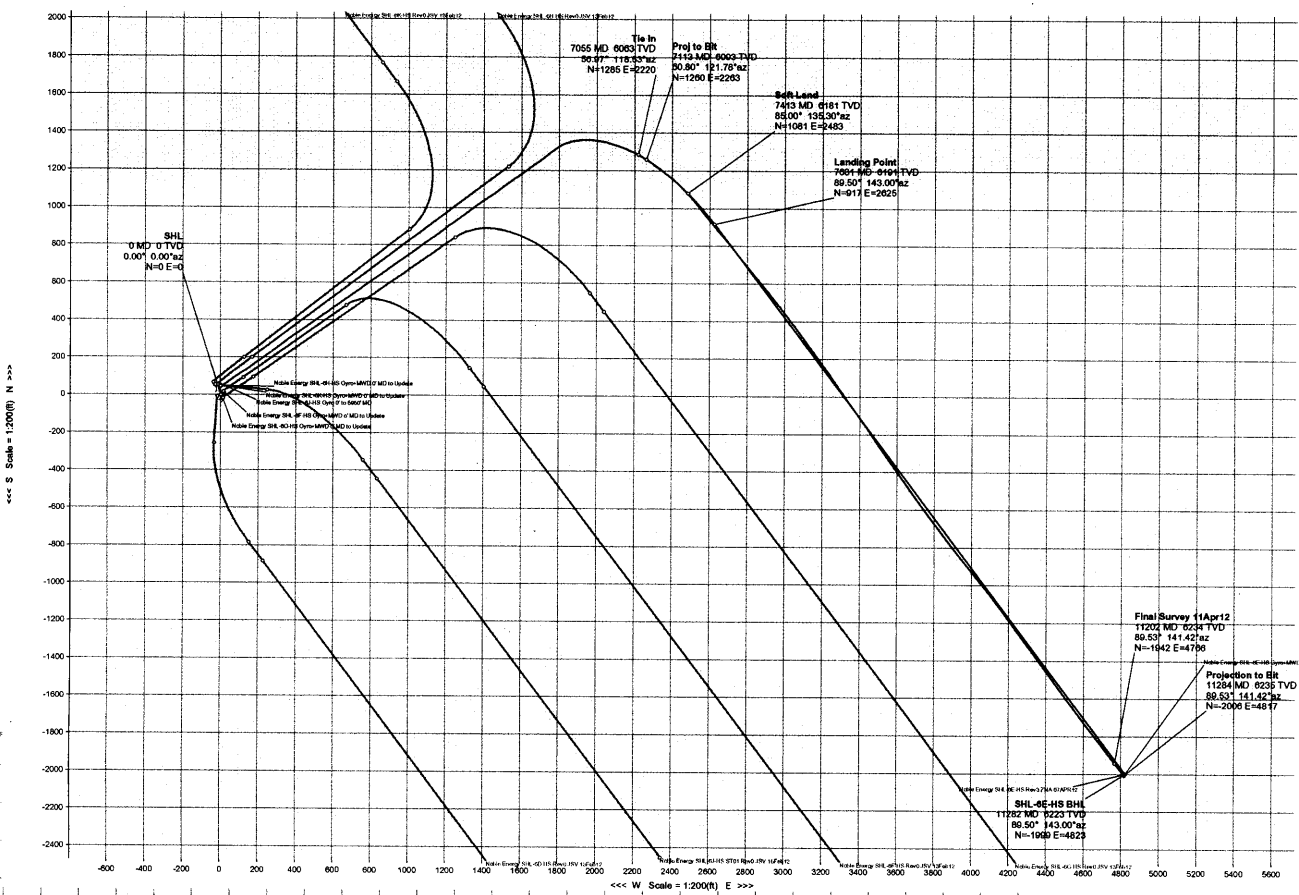
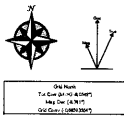


WELL	SHL-6E-HS	FIELD	WV Marshall County (NAD 27)		STRUCTURE	Nabors M59	
Magnetic Parameters	Model: BGM2011 Dip: 67.516° Mag Dec: -8.741°	Date: April 17, 2012 FS: 5294.567	Surface Location Lat: N 39 57 22.227 Lon: W 82 34 31.861	NAD27 West Virginia State Plane, Northern Zone, US Feet Northing: 532183.42 RUS Easting: 109649.55 RUS	Grid Corner: -0.68993564° Scale Factor: 0.99997311	Microseismic Site: SHL-6E-HS Plan: MWD Surveys	TVD Ref: X:8053.928 above MSL) Entry Date: February 15, 2012



Tool Joint	Tool Joint	Survey	Survey	Survey	Survey	Survey	Survey
7055	7113	7413	7621	7691	11202	11282	11284

Depth (MD)	Depth (MD)	Depth (MD)	Depth (MD)	Depth (MD)	Depth (MD)	Depth (MD)	Depth (MD)
7055	7113	7413	7621	7691	11202	11282	11284

Well Name	MD	TVD	Azimuth	Departure
Noble Energy SHL-6E-HS (Open MD) of MD to 11284 MD	7055	6003	118.53°	9220
Noble Energy SHL-6E-HS (Open MD) of MD to 11284 MD	7113	6003	121.78°	2283
Noble Energy SHL-6E-HS (Open MD) of MD to 11284 MD	7413	6181	135.30°	2483
Noble Energy SHL-6E-HS (Open MD) of MD to 11284 MD	7621	6191	143.00°	2625
Noble Energy SHL-6E-HS (Open MD) of MD to 11284 MD	7691	6191	143.00°	2625
Noble Energy SHL-6E-HS (Open MD) of MD to 11284 MD	11202	6234	141.42°	4780
Noble Energy SHL-6E-HS (Open MD) of MD to 11284 MD	11282	6223	143.00°	4823
Noble Energy SHL-6E-HS (Open MD) of MD to 11284 MD	11284	6235	141.42°	4817

Drawn By: J Venner
Date Created: April 11, 2012 06:28:10 AM
Checked By:
Checked Date:
Approved By:
Approved Date: