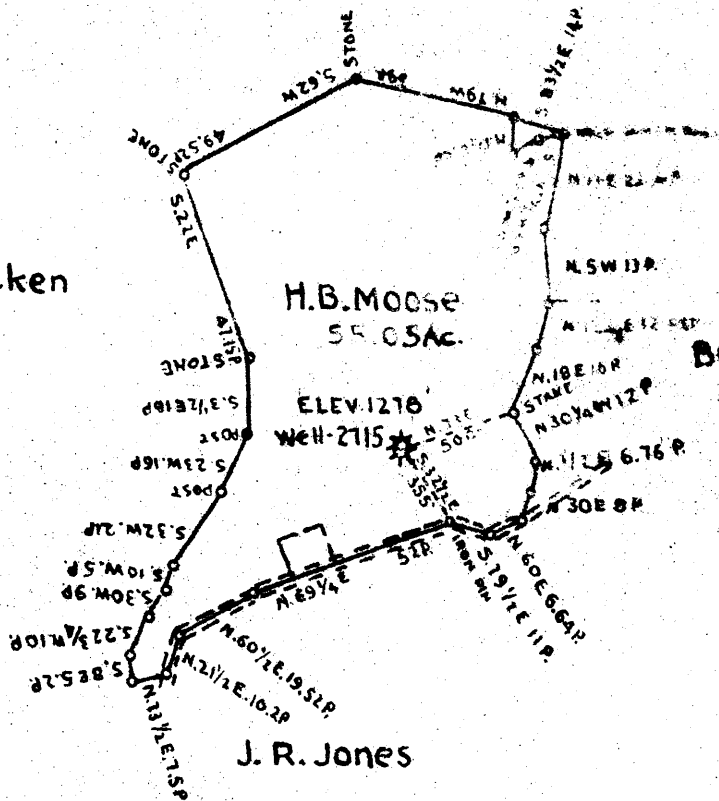


-0 1 2 3 LATITUDE 31 50  
 +  
 -1  
 -2  
 -3  
 LONGITUDE 80 30

TOWN OF CAMERON

Geo. McCracken



Brice Howard

J. R. Jones

COAL OWNED BY... BY STATE OF WEST VIRGINIA

NEW LOCATION...   
 DRILL DEEPER...   
 ABANDONMENT...

COMPANY THE MANUFACTURERS LIGHT & HEAT CO.  
 ADDRESS 800 UNION TRUST BLD'G. PITTSBURGH PA.  
 FARM H.B. MOOSE NOW J.B. GUTHRIE  
 TRACT ACRES 55.05 LEASE No. 6963  
 WELL (FARM) No. 1 SERIAL No. 2715  
 ELEVATION (SPIRIT LEVEL) 1270'  
 QUADRANGLE CAMERON  
 COUNTY MARSHALL DISTRICT LIBERTY  
 ENGINEER *J. L. Mercer*  
 ENGINEER'S REGISTRATION No. \_\_\_\_\_  
 FILE No. \_\_\_\_\_ DRAWING No. Y-11-340  
 DATE JUNE 23 '47 SCALE 1" = 800'

STATE OF WEST VIRGINIA  
 DEPARTMENT OF MINES  
 OIL AND GAS DIVISION  
 CHARLESTON

WELL LOCATION MAP

FILE No. MARS-270-A  
 Now OS 1344

↑ DENOTES LOCATION OF WELL ON UNITED STATES TOPOGRAPHIC MAPS. SCALE 1 TO 62,500. LATITUDE AND LONGITUDE LINES BEING REPRESENTED BY BORDER LINES AS SHOWN.

— DENOTES ONE INCH SPACES ON BORDER LINE OF ORIGINAL TRACING.

66 (023)



312

STATE OF WEST VIRGINIA  
DEPARTMENT OF MINES  
OIL AND GAS DIVISION

WELL RECORD

Ab 270-A → 1344  
Permit No. \_\_\_\_\_

Oil or Gas Well Gas  
(KIND)

Company THE MANUFACTURERS LIGHT & HEAT COMPANY  
Address 800 Union Trust Building, - Pittsburgh Pa.  
Farm H. B. Moose Acres 55  
Location (waters) \_\_\_\_\_  
Well No. 2715 Elev. 1278'  
District Cameron County Marshall  
The surface of tract is owned in fee by Ocie Moose,  
Cameron, W. Va. Address \_\_\_\_\_  
Mineral rights are owned by The Mfrs. Light & Heat Co.  
800 Union Trust Bldg. Address Pittsburgh, Penna.  
Drilling commenced June 15th, 1922  
Drilling completed July 10th, 1922  
Date Shot \_\_\_\_\_ From \_\_\_\_\_ To \_\_\_\_\_  
With \_\_\_\_\_

Casing and Tubing	Used in Drilling	Left in Well	Packers
Size			
16			Kind of Packer
18			
10	275'	275'	Size of
8 3/4	1431'	1431'	6-5/8 X 4
6 3/4	2139'	2139'	Depth set
5 3/16			
3			Perf. top
2			Perf. bottom
Liners Used			Perf. top
			Perf. bottom

Open Flow \_\_\_\_\_ /10ths Water in \_\_\_\_\_ Inch  
\_\_\_\_\_ /10ths Merc. in \_\_\_\_\_ Inch  
Volume 632,000 Cu. Ft.  
Rock Pressure 380 lbs. not stated hrs.  
Oil \_\_\_\_\_ bbls., 1st 24 hrs.  
Fresh water \_\_\_\_\_ feet  
Salt water \_\_\_\_\_ feet

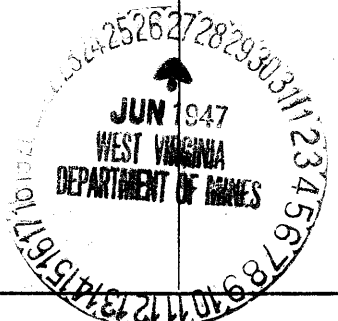
CASING CEMENTED \_\_\_\_\_ SIZE \_\_\_\_\_ No. Ft. \_\_\_\_\_ Date \_\_\_\_\_

COAL WAS ENCOUNTERED AT 730 FEET 60 INCHES  
916 FEET 60 INCHES. 1010 FEET 84 INCHES  
\_\_\_\_\_ FEET \_\_\_\_\_ INCHES. \_\_\_\_\_ FEET \_\_\_\_\_ INCHES

Formation	Color	Hard or Soft	Top	Bottom	Oil, Gas or Water	Depth Found	Remarks
Clay, Slate & Lime			900	670			
Bluff Sand			670	730			
Coal			730	735			
Lime			735	790			
Slate			790	800			
Lime			800	916			
Mapletown Coal			916	921			
Lime & Slate			921	1010			
Pittsburgh Coal			1010	1017			
Slate, Lime & Rock			1017	1280			
Sand			1280	1300			
Rock			1300	1370			
Sand			1370	1380			
Rock, Lime & Slate			1380	1490			
Big Dunkard Sand			1490	1593			
Slate			1593	1620			
Gas Sand			1620	1675			
Slate & Lime			1675	1840			
First Salt Sand			1840	1862			
Slate			1862	1915			
Second Salt Sand			1915	2010			
Slate			2010	2072			
Maxon Sand			2072	2094			
Slate & Lime			2094	2155			
Big Injun Sand			2155	2261			
Total Depth				2261			

C

Gas at 2253'



Formation	Color	Hard or Soft	Top	Bottom	Oil, Gas or Water	Depth Found	Remarks

Date May 21st, 1947

APPROVED THE MANUFACTURERS LIGHT & HEAT COMPANY Owner

By Ben Cooper LAND AGENT  
(Title)

ISAAC MOOSE NO. 2715 WELL.

Cameron District, Marshall County, W. Va.  
By Manufacturers Light & Heat Co.  
Completed July 10, 1922.  
Record from Mr. Schillheim Sept. 30, 1939.

270A + 1344

	Top.	Bottom.
Pittsburgh Coal	1010	- 1017
Big Dunkard Sand	1490	- 1593
Gas Sand	1620	- 1675
1st Salt Sand	1810	- 1862
2nd Salt Sand	1915	- 2010
Maxton Sand	2072	- 2094
Big Injun Sand (gas, 2253')	2155	- ....
Total depth		2261