

STATE OF WEST VIRGINIA  
DIVISION OF ENVIRONMENTAL PROTECTION  
SECTION OF OIL AND GAS

WELL REGISTER ASSIGNMENT

This API Number 47- 51-00818, issued to COLUMBIA GAS TRANSMISSION COR is evidence of permission to operate the well that is referenced at the location described on the attached plat, subject to the provisions of Chapters 22 and 22B of the West Virginia Code of 1931, as amended, and all rules and regulations promulgated thereunder. The name and telephone number of the Oil and Gas Inspector for this well is RANDAL MICK -  
304-986-3324.

Spills or emergency discharges must be reported to 1-800-654-3312.

Failure to abide by all statutory and regulatory provisions governing all duties and operations hereunder may result in suspension or revocation of your permits and in addition may result in civil and/or criminal penalties.

The enclosed WR-35 must be completed by you and returned to this office. In addition annual production reports must be submitted on this well and failure to do so may require you to plug the well.

Theodore M. Streit  
Chief

By: *T.M. Streit*

Title: \_\_\_\_\_

Operator's Well No: L-4458

Farm Name: YOHO, GEORGE N.

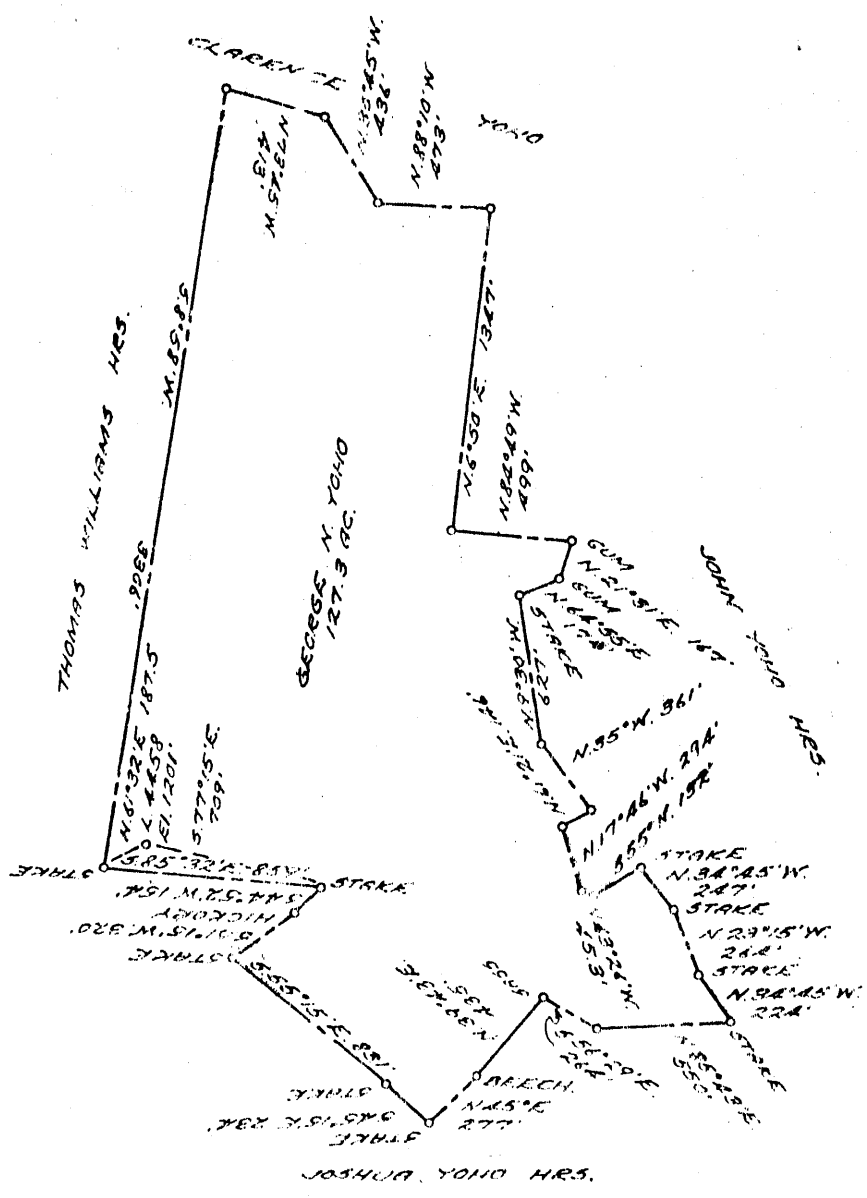
API Well Number : 47- 51-00818 N

Date Issued : 04/10/95

77 → 381A → 818 N



80°37'30"



0.52S  
3.45W

Purchased for storage  
 NEW LOCATION  
 DRILL DEPTH  
 ABANDONMENT  
 *issued 2-17-71*

COMPANY THE MANUFACTURERS LIGHT & HEAT  
 ADDRESS 800 UNION TRUST BLDG. P6H. PA.  
 FARM G. N. YOH0  
 TRACT ACRES 127 LEASE NO. 26500  
 WELL TAPING NO. (3) SERIAL NO. 1458  
 ELEVATION (SPIRIT LEVEL) 1201'  
 QUADRANGLE LITTLETON NC CAMERON 7 1/2  
 COUNTY MARSHALL DISTRICT LIBERTY  
 ENGINEER GORDON W. SIMMONS (GREENFIELD OIL & TRUST)  
 ENGINEER'S REGISTRATION NO. 509  
 FILE NO. \_\_\_\_\_ DRAWING NO. Y-15-561  
 DATE 23 APR. 1957 SCALE 1" = 800'

GEORGE R. H. VIRGINIA  
 DEPARTMENT OF MINES  
 OIL AND GAS DIVISION  
 CHARLESTON

**WELL LOCATION MAP**  
 FILE NO. MARS-381-PARTIAL-A

Mars. 381-PP-P - Abandoned series  
 + DENOTES LOCATION OF WELL ON UNITED STATES TOPO-GRAPHIC MAPS, SCALE 1 TO 62,500. LATITUDE AND LONGITUDE LINES BEING REPRESENTED BY BORDER LINES AS SHOWN.  
 - DENOTES ONE INCH SPACES ON BORDER LINE OF ORIGINAL TRACING.





STATE OF WEST VIRGINIA  
DEPARTMENT OF MINES  
OIL AND GAS DIVISION

051-0818-P

NOT, 051-381-A.

WELL RECORD

Permit No. \_\_\_\_\_

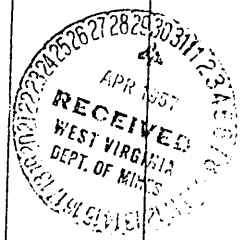
Oil or Gas Well (KIND)

Company THE MANUFACTURERS LIGHT AND HEAT COMPANY  
 Address 800 UNION TRUST BUILDING, PITTSBURGH, PA.  
 Farm G. N. Yoho Acres 127  
 Location (waters) \_\_\_\_\_  
 Well No. 4458 Elev. \_\_\_\_\_  
 District Liberty County Marshall  
 The surface of tract is owned in fee by \_\_\_\_\_  
 Address \_\_\_\_\_  
 Mineral rights are owned by \_\_\_\_\_  
 Address \_\_\_\_\_  
 Drilling commenced \_\_\_\_\_  
 Drilling completed \_\_\_\_\_  
 Date Shot \_\_\_\_\_ From \_\_\_\_\_ To \_\_\_\_\_  
 With \_\_\_\_\_  
 Open Flow \_\_\_\_\_ /10ths Water ft. \_\_\_\_\_ Inch  
 \_\_\_\_\_ /10ths Merc. in. \_\_\_\_\_ Inch  
 Volume \_\_\_\_\_ Cu. Ft.  
 Rock Pressure \_\_\_\_\_ lbs. \_\_\_\_\_ hrs.  
 Oil \_\_\_\_\_ bbls., 1st 24 hrs.  
 Fresh water \_\_\_\_\_ feet \_\_\_\_\_ feet  
 Salt water \_\_\_\_\_ feet \_\_\_\_\_ feet

Casing and Tubing	Used in Drilling	Left in Well	Packers
Size			Kind of Packer
16			
13			
10 Casing	161 Feet	Pulle	Size of
8" Casing	1491-989	Left in Well	Depth set
6 1/2" 1993	1993 Feet	Left in Well	
5 3/16			
3			Perf. top
2 Tubing	2980 Feet		Perf. bottom
Liners Used			Perf. top
			Perf. bottom

CASING CEMENTED \_\_\_\_\_ SIZE \_\_\_\_\_ No. Ft. \_\_\_\_\_ Date \_\_\_\_\_  
 COAL WAS ENCOUNTERED AT \_\_\_\_\_ FEET \_\_\_\_\_ INCHES  
 \_\_\_\_\_ FEET \_\_\_\_\_ INCHES FEET \_\_\_\_\_ INCHES  
 \_\_\_\_\_ FEET \_\_\_\_\_ INCHES FEET \_\_\_\_\_ INCHES

Formation	Color	Hard or Soft	Top	Bottom	Oil, Gas or Water	Depth Found	Remarks
WELL RECORD	ROXY	NEELY					
Greenfield	Oil & Gas	Company					
Waynesburg Coal			640	645			
Lime Stone & Slate			645	860			
Maple town Coal			860	865			
Lime Stone & Slate			865	954			
Pittsburgh Coal			954	960			
Sand Light			960	1010			
Red Rock			1010	1160			
Red Rock & Shells			1160	1280			
Lime Stone			1280	1295			
Sand			1295	1345			
Black Slate			1345	1430			
White Slate			1430	1480			
Big Dunkard			1480	1515			
Slate & Shells			1515	1585			
Sand			1585	1665			
Slate Dark			1665	1760			
Sand			1760	1770			
Slate			1770	1840			
Sand			1840	1885			
Slate			1885	1905			
Sand			1905	1935			
Slate			1935	1940			
Sand			1940	1980			
Break in Sand Pencil Cave			1980	1990			
Sand			1990	2015			
Maxon Sand			2015	2065			
Big Injun Sand Lime			2065	2100			
Big Injun Sand			2100	2365			
Gordon Stray Sand			2365	2908			
Gordon Sand			2908	2940			
			2940	2980			
Total Depth	2980						
Gas	Pay 2140-2143						
Oil	Pay 2968 - 2974						
				24/10	Water in Inch		



(Over)

State of West Virginia  
Division of Environmental Protection  
Section of Oil and Gas

Well Operator's Report of Well Work

Farm name: YOHO, GEORGE N. Operator Well No.: L-4458

LOCATION: Elevation: 1,201.00 Quadrangle: WILEYVILLE

District: LIBERTY County: MARSHALL  
Latitude: 3200 Feet South of 39 Deg. 45Min. 0 Sec.  
Longitude 6700 Feet West of 80 Deg. 37 Min. 30 Sec.

Company: COLUMBIA GAS TRANSMISSION  
P.O. BOX 1273  
CHARLESTON, WV 25325-1273

Casing & Tubing	Used in Drilling	Left in Well	Cement Fill Up Cu. Ft.
Size			

Agent: RICHARD L. COTY

Inspector: RANDAL MICK  
Permit Issued: 04/10/95

6800 W - 80° 37' - 30"  
3350 S - 39° 45' 00"

CSD FARM George N. Yoho Roxie Neely NO. 1 COMPANY Manufacturer L.H. NO. 4458

TWP. Liberty COUNTY Marshall STATE W.Va MAP Littleton NW

COM. DR. 8/23/57 A.B.D. Jan. 1971 ELEV. 1201

INIT. VOL. Storage INIT. R. P. Storage FIN. VOL. Storage T. D. 2345

PIPE SIZE	PACKER SIZE	TYPE	SET @

FEET LEFT IN	SHOT VOL. A.S.	OTS. @	VOL. TURNED IN

DATE	DEPTH	STATUS	DATE	DEPTH	STATUS	AUTHORITY
						<u>Completion slip</u>
						LEASE NO. <u>26500</u> ACS. <u>126</u>
						CONTRACT NO.
						MINUTE PRESSURE TEST
						1 2 3 4 5 10 15 20 30
						REMARKS
						<u>See T. 13888 - Purchased from Greenfield Oil &amp; Gas Trust 1/29/57.</u>
						SEP 14 93
						Permitting Office of Oil & Gas

5-24 Rigging up  
5-24 Mill  
6-21 Fish 7" casing  
6-23  
7-5 Mill 8" casing  
7-19 Drill out cement  
7-19  
7-26 Bridge pipe  
8-2  
8-9 Mill 7" casing  
8-16 2345-2345 mill pipe  
8-23 2345 Completed  
5-5-71 P&A

By: \_\_\_\_\_  
Date: \_\_\_\_\_

FOREIGN WELL GIVEN BY ~~MLC~~  
 F-13888 MLCM

LOCATION *Lit. N.W.* SERIAL NO. **13888**  
 OPERATOR *Greenfield O.G. OPER. NO.* FARM *Roxey Neely*  
 TWP. OR DIST. *Liberty* COUNTY *Marshall* STATE *W. Va.*  
 WK. DIST. OR FIELD ELEVATION *1201*  
 COM. DR. COMP. *3-27-37* PROD. SAND *B. 2* TOTAL DEPTH *2980*  
 INIT. TEST INIT. VOL. *59 520* INIT. R. P. *400* ~~46 Hrs~~ ABANDONED  
 REMARKS: *See address on 2nd 4 13888* AUTHORITY

Date	Depth	Remarks	Date	Depth	Remarks	Date	R. P.	Production
10-36			3-20	2935	Testing			
11-21		L.P.M.	3-27	2980	Complete			
12-19		Rigging up						
12-26		" "						
1937								
1-2	225							
1-9	250							
1-16	240							
1-23	1250							
1-30	1525							
2-6	1975							
2-13	2100							
2-20	2250							
2-27	2600							
3-6	2935							
3-13	2935	blasting						

Casing and Tubing		Packer Data	
Size	Amount	Size	Set at
10"			
8 1/2"	989		
6 3/4"	1993		
6 1/4"			
5 1/2"			
4"			
3"			
2"	2974		

MINUTE PRESSURE TEST						
Date	Tubing	1	5	10	15	Rock

Permitting Office of Oil & Gas

502 MLCM #4458

SERIAL NO.							
FORMATION	TOP	BOTTOM	REMARKS	FORMATION	TOP	BOTTOM	REMARKS
Waynesburg Coal	640	645	Mapletown Coal 860'	Gantz 100, Sand			
Pittsburgh Coal	954	960		30' Sand			
Murphy Coal Sand	960	1010		Snee Sand			
Ames Limestone Sand	1295	1345		Boulder Sand			
Bakerstown Coal				Gor. Stray Sand	2908	2940	
L. Dunkard Sand				Gordon Sand	2964	2980	Oil 2968' to 2974'
B. Dunkard Sand	1480	1515	Sand	4th Sand			T.D. 2980'
Ch. Freeport Coal	1585	1665	"	5th Sand			
Freeport Coal	1760	1770	"				
Ch. Kitt. Coal	1840	1885	"				
Ch. Kitt. Coal	1905	1935	"				
Ch. Kitt. Coal	1940	1980	" Pencil Cave	Bayard Sand			
Vanport Lime				Bayard Str. Sand			
Clarion Coal				Bayard Str. Str. Sd.			
Brookville Coal				Elizabeth Sand			
1st Gas Sand				1st Warren Sand			
Mercer Coal				2nd Warren Sand			
1st Salt Sand				Speech. Str. Sand			
2nd Salt Sand				Speechley Sand			
3rd Salt Sand				Tions Sand			
Mason Sand	1980	1990	Break in Pencil Cave	1st Balltown Sand			
Little Lime				2nd Balltown Sand			
Pencil Cave	1990	2065		Sheffield Sand			
Big Lime	2065	2100		1st Bradford Sand			
Keener Sand				2nd Bradford Sand			
Big Injun Sand	2100	2365	Show of Gas 2100'	3rd Bradford Sand			
Snow Sand			Gas at 2140' to 2145'	Kane Sand			
2nd Gas Sand			38,000 ft. Open Flow	Elk Sand			
Murrysville Sand				Oriskany Sand			

Permitting Office of Oil & Gas



STATE OF WEST VIRGINIA  
DEPARTMENT OF MINES  
OIL AND GAS DIVISION

440

Quadrangle no  
Permit No. 381-A

WELL RECORD

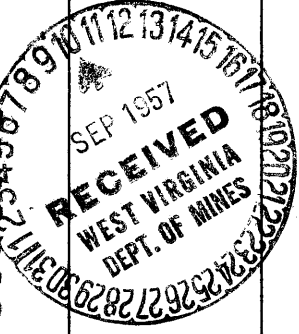
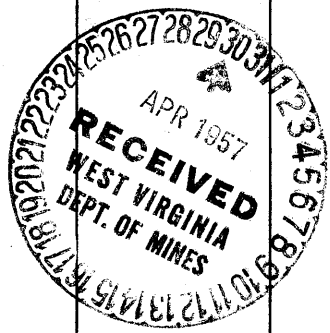
Oil or Gas Well \_\_\_\_\_  
(KIND)

Company THE MANUFACTURERS LIGHT AND HEAT COMPANY  
Address 800 UNION TRUST BUILDING, PITTSBURGH, PA.  
G. N. Yoho  
Farm \_\_\_\_\_ Acres 127  
Location (waters) \_\_\_\_\_  
Well No. 4458 Elev. \_\_\_\_\_  
District Liberty County Marshall  
The surface of tract is owned in fee by \_\_\_\_\_  
Address \_\_\_\_\_  
Mineral rights are owned by \_\_\_\_\_  
Address \_\_\_\_\_  
Drilling commenced \_\_\_\_\_  
Drilling completed \_\_\_\_\_  
Date Shot \_\_\_\_\_ From \_\_\_\_\_ To \_\_\_\_\_  
With \_\_\_\_\_  
Open Flow \_\_\_\_\_ /10ths Water in \_\_\_\_\_ Inch  
\_\_\_\_\_ /10ths Merc. in \_\_\_\_\_ Inch  
Volume \_\_\_\_\_ Cu. Ft.  
Rock Pressure \_\_\_\_\_ lbs. \_\_\_\_\_ hrs.  
Oil \_\_\_\_\_ bbls., 1st 24 hrs.  
Fresh water \_\_\_\_\_ feet \_\_\_\_\_ feet  
Salt water \_\_\_\_\_ feet \_\_\_\_\_ feet

Casing and Tubing	Used in Drilling	Left in Well	Packers
Size			
16			Kind of Packer _____
13			
10	<u>Casing 161. Feet Pulle</u>		Size of _____
8	<u>8" Casing 1491-989</u>	<u>Left in Well</u>	
6	<u>6" 1998 Feet Left in Well</u>		Depth set _____
5 3/16			
3			Perf. top _____
2	<u>Tubing 2980 Feet</u>		Perf. bottom _____
Liners Used			Perf. top _____
			Perf. bottom _____

CASING CEMENTED \_\_\_\_\_ SIZE \_\_\_\_\_ No. Ft. \_\_\_\_\_ Date \_\_\_\_\_  
COAL WAS ENCOUNTERED AT \_\_\_\_\_ FEET \_\_\_\_\_ INCHES  
\_\_\_\_\_ FEET \_\_\_\_\_ INCHES FEET \_\_\_\_\_ INCHES  
\_\_\_\_\_ FEET \_\_\_\_\_ INCHES FEET \_\_\_\_\_ INCHES

Formation	Color	Hard or Soft	Top	Bottom	Oil, Gas or Water	Depth Found	Remarks
<b>WELL RECORD ROXY NEELY</b>							
<b>Greenfield Oil &amp; Gas Company</b>							
Waynesburg Coal			640.645				
Line Stone & Slate			645	860			
Maple town Coal			860	865			
Line Stone & Slate			865	954			
Pittsburgh Coal			954	960			
Sand Light			960	1010			
Red Rock			1010	1160			
Red Rock & Shells			1160	1280			
Line Stone			1280	1295			
Sand			1295	1345			
Black Slate			1345	1430			
White Slate			1430	1480			
Big Dunkard			1480	1515			
Slate & Shells			1515	1585			
Sand			1585	1665			
Slate Dark			1665	1760			
Sand			1760	1770			
Slate			1770	1840			
Sand			1840	1885			
Slate			1885	1905			
Sand			1905	1935			
Slate			1935	1940			
Sand in Sand Pencil Cave			1940	1980			
Break in Sand Pencil Cave			1980	1990			
Sand			1990	2015			
Maxon Sand			2015	2065			
Big Injun Sand Lime			2065	2100			
Big Injun Sand			2100	2365			
Gordon Stray Sand			2908	2940			
Gordon Sand			2964	2980			
Total Depth			2980				
			Gas Pay 2140-2143	24/10 Water in Inch			
			Oil Pay 2968 - 2974				







WEST VIRGINIA DEPARTMENT OF MINES  
OIL AND GAS DIVISION

WELL RECORD

Permit No. 1225-77

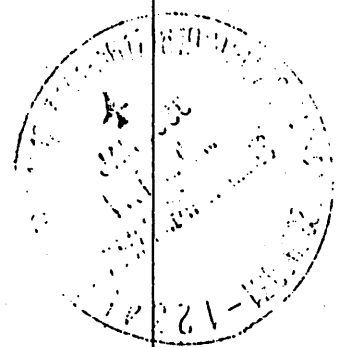
Oil or Gas Well oil  
(Kind)

Company Greenfield Oil & Gas Trust  
 Address Cameron, W. Va.  
 Farm Bobie Neely Acres 1.29  
 Location (waters) Valley Run  
 Well No. 1225-77 Elev. \_\_\_\_\_  
 District Liberty County Marshall  
 The surface of tract is owned in fee by Bobie Neely  
 Address Howard W. Va.  
 Mineral rights are owned by B. Neely  
 Address \_\_\_\_\_  
 Drilling commenced Dec 28 - 1936  
 Drilling completed March 4 1936  
 Date shot March 6 - 1936 Depth of shot 2968-2974  
 Open Flow 10ths Water in \_\_\_\_\_ Inch  
10ths Merc. in \_\_\_\_\_ Inch  
 Volume \_\_\_\_\_ Cu. Ft.  
 Rock Pressure \_\_\_\_\_ lbs. \_\_\_\_\_ hrs.  
 Oil 5 Barrels bbls., 1st 24 hrs.  
 Fresh water \_\_\_\_\_ feet \_\_\_\_\_ feet  
 Salt water 18.65 feet \_\_\_\_\_ feet

Casing and Tubing	Used in Drilling	Left in Well	Packers
Size			
16			Kind of Packer
13	<u>Conduits 16 feet</u>		
10	<u>16.0</u>		Size of
8 1/4	<u>14.80</u>	<u>14.80</u>	
6 5/8	<u>20.15</u>	<u>20.15</u>	Depth set
5 3/16			
3			Perf. top
2		<u>29.80</u>	Perf. bottom
Liners Used			Perf. top
			Perf. bottom

CASING CEMENTED \_\_\_\_\_ SIZE \_\_\_\_\_ No. FT. \_\_\_\_\_ Date \_\_\_\_\_  
 COAL WAS ENCOUNTERED AT 640 FEET \_\_\_\_\_ INCHES  
860 FEET \_\_\_\_\_ INCHES 954 FEET \_\_\_\_\_ INCHES  
 \_\_\_\_\_ FEET \_\_\_\_\_ INCHES \_\_\_\_\_ FEET \_\_\_\_\_ INCHES

Formation	Color	Hard or Soft	Top	Bottom	Oil Gas or Water	Depth Found	Remarks
oil & shale	dark	soft		<u>16 feet</u>			
sand stone	dark	hard	<u>16</u>	<u>25</u>			
slate	light	soft	<u>25</u>	<u>40</u>			
lime stone	hard		<u>40</u>	<u>60</u>			
red rock	red	soft	<u>60</u>	<u>100</u>			
lime	light	hard	<u>100</u>	<u>125</u>			
sand stone	light	hard	<u>125</u>	<u>140</u>			
slate	dark	soft	<u>140</u>	<u>175</u>			
lime stone	light	hard	<u>175</u>	<u>200</u>			
slate	light	soft	<u>200</u>	<u>215</u>			
red rock	red	soft	<u>215</u>	<u>240</u>			
slate	dark	soft	<u>240</u>	<u>255</u>			
sand	light	hard	<u>255</u>	<u>300</u>			
slate	dark	soft	<u>300</u>	<u>335</u>			
red rock	red	soft	<u>335</u>	<u>360</u>			
lime stone	light	hard	<u>360</u>	<u>400</u>			
water shells	dark	hard	<u>400</u>	<u>640</u>			
Jamesburg coal	dark	soft	<u>640</u>	<u>642</u>			
lime stone	light	hard	<u>642</u>	<u>700</u>			
slate	dark	soft	<u>700</u>	<u>740</u>			
red rock	red	soft	<u>740</u>	<u>760</u>			
sand stone	dark	hard	<u>760</u>	<u>825</u>			
lime rock	light	hard	<u>825</u>	<u>860</u>			
napietown	coal	soft	<u>860</u>	<u>865</u>			



Formation	Color	Hard or Soft	Top	Bottom	Oil, Gas or Water	Depth Found	Remarks
Blue Siltstone	Dark	Hard	865	890			
Shale	Light	soft	890	925			
Siltstone	Light	Hard	925	954			
Pittsburg coal		soft	954	960	Steel Line Measurement on Pittsburg coal		
Sand	Light	Hard	960	1010			
Red Rocks	Red	soft	1010	1160			
Red Rocks	Red & Shells		1160	1280			
Siltstone	Dark	Hard	1280	1295			
Sand	Light	Hard	1295	1345			
Blue Shale		soft	1345	1430			
Shale	White	soft	1430	1480			
Big Dune Sand	White	Hard	1480	1515			
<del>Sand</del>	White	<del>soft</del>	1515	1585			
Shale			1585	1665			
Sand	White	Hard	1665	1760			
Shale	Dark	soft	1665	1760			
Sand	Light	Hard	1760	1770			
Shale	Light	soft	1770	1840	Water 6 Barrels Per hour. 18.65		
Sand	Light	Hard	1840	1885			
Shale	Dark	soft	1885	1905			
Sand	Hard		1905	1935			
Shale	Dark	soft	1935	1940			
Sand	Light	Hard	1940	1980			
Shale	Dark	soft	1980	1990			
Sand	Dark	Hard	1990	2015			
Sand	Dark	Hard	2015	2065			
Silt	Light	Hard	2065	2100	Show of gas at Show of gas at		2100
Sand	Dark	Hard	2100	2365			2140-2143
Broken up Sand			2365	2908			
Carbon Streak Sand			2908	2940			
Shale	Black		2940	2964			
Harder Sand			2964	2980	Oil at -		2968 - 2974

Date January 12, 1938  
 APPROVED W. H. Smith Owner  
 By A. H. Livingston  
 (Title)

281A

Liberty District, Marshall County, W. Va.

By The Manufacturers Light & Heat Co., 800 Union Trust Bldg., Pittsburgh, Pa.

Abandoned under permit Nos-----AY; ..... Quadrangle. (Flat not in yet).

On 127 acres.

Elevation, .....' L.

Well record, Roxy Neely, Greenfield Oil & Gas Co.

10" casing, 161' (pulled); 8", 1491' (989' left in); 6", 1993' (left in);

2" tubing, 2980'.

Gas well. Record to Dept. of Mines dated April 25, 1957.

Record to RCT from Mrs. Griffith Dec. 6, 1957. Old File No. 440.

	Top.	Bottom.
Waynesburg Coal	640	645
Limestone and slate	645	860
Mapletown (Sewickley) Coal	860	865
Limestone and slate	865	954
Pittsburgh Coal	954	960
Sand, light	960	1010
Red rock	1010	1160
Red rock and shells	1160	1280
Limestone	1280	1295
Sand	1295	1345
Black slate	1345	1430
White slate	1430	1480
Big Bankard Sand	1480	1515
Slate and shells	1515	1585
Sand	1585	1665
Slate, dark	1665	1760
Sand	1760	1770
Slate	1770	1840
Sand	1840	1885
Slate	1885	1905
Sand	1905	1935
Slate	1935	1940
Break in sand, Pencil Cave	1940	1980
Break in sand, Pencil Cave	1980	1990
Sand	1990	2015
Maxton Sand	2015	2065
Big Injun Sand, lime	2065	2100
Big Injun Sand (gas pay, 24/10 1")	2100	2365
Gordon Stray Sand	2908	2940
Gordon Sand (oil pay, 2968-74')	2964	2980
Total depth		2980



