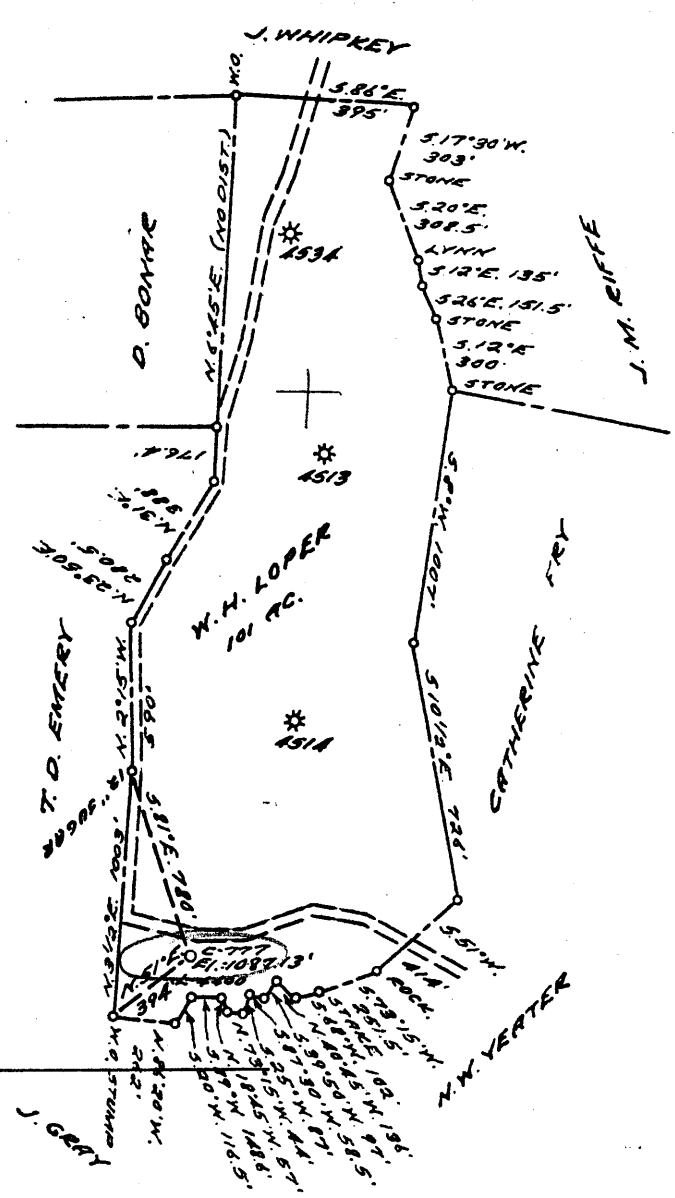


0 1 2 3 LATITUDE 39 ° 50 ' 1
 39 47 30
 1 2 3 LONGITUDE 80 ° 35'

plot



18283

COAL OWNED BY _____

NEW LOCATION.....

DRILL DEEPER.....

ABANDONMENT..... PARTIAL plug

0-25-28

COMPANY THE MANUFACTURERS LIGHT & HEAT

ADDRESS 800 UNION TRUST BLDG. PGM. PA.

FARM W. H. LOPER

TRACT _____ ACRES 101 LEASE No. 28901

WELL (FARM) No. _____ SERIAL No. 4400

ELEVATION (SPIRIT LEVEL) 1087.13'

QUADRANGLE CAMERON Sd.

COUNTY MARSHALL DISTRICT LIBERTY

ENGINEER Robert M. Neill

ENGINEER'S REGISTRATION No. 361-E (J.F.)

FILE No. _____ DRAWING No. V-15-995

DATE 13 JULY 59 SCALE 1"=800'

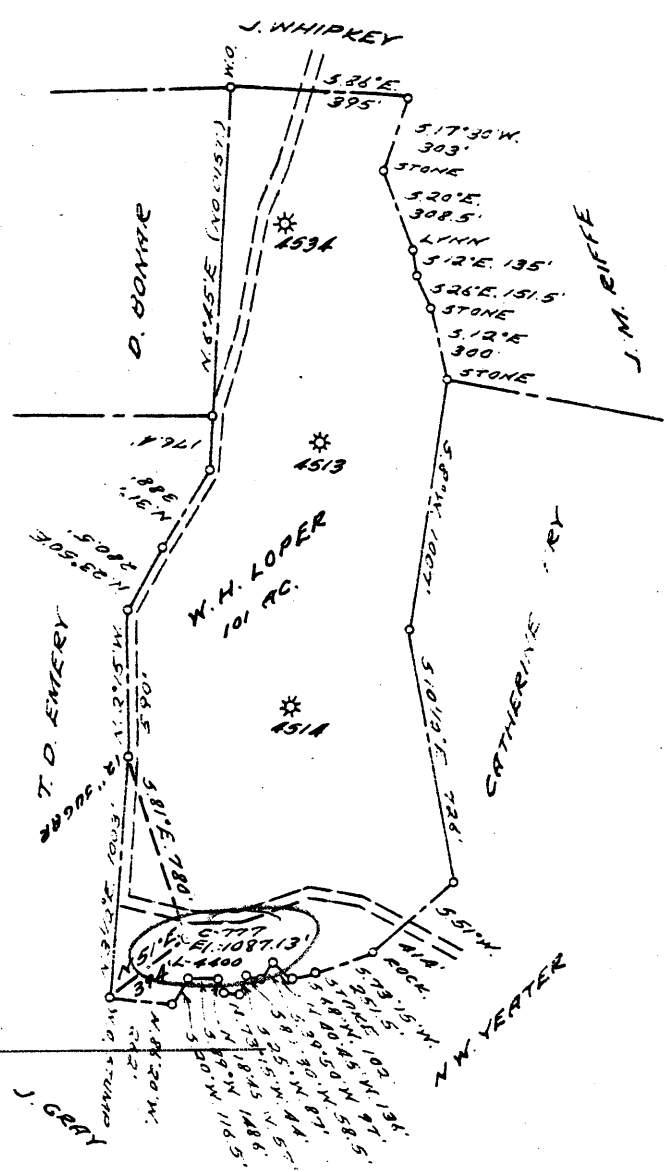
STATE OF WEST VIRGINIA
 DEPARTMENT OF MINES
 OIL AND GAS DIVISION
 CHARLESTON

WELL LOCATION MAP

FILE No. MARS-401-T^B
051-0787-T

+ DENOTES LOCATION OF WELL ON UNITED STATES TOPOGRAPHIC MAPS. SCALE 1 TO 62,500. LATITUDE AND LONGITUDE LINES BEING REPRESENTED BY BORDER LINES AS SHOWN.

- DENOTES ONE INCH SPACES ON BORDER LINE OF ORIGINAL TRACING.
 Correct per notification from DEP 3/95 sek



COAL OWNED BY _____

NEW LOCATION

DRILL DEEPER

ABANDONMENT Partial plug

5.065
2.88
1.41W

0-25-28

COMPANY THE MANUFACTURERS LIGHT & HEAT

ADDRESS 800 UNION TRUST BLDG. PGH. PA.

FARM W. H. LOPER

TRACT _____ ACRES 101 LEASE NO. 28901

WELL (FARM) No. _____ SERIAL No. 4400

ELEVATION (SPIRIT LEVEL) 1087.13'

QUADRANGLE CAMERON

COUNTY MARSHALL DISTRICT LIBERTY

ENGINEER Robert M. Hill

ENGINEER'S REGISTRATION No. 361-E (J.F.)

FILE No. _____ DRAWING No. V-15-995

DATE 13 JULY 59 SCALE 1" = 800'

STATE OF WEST VIRGINIA
DEPARTMENT OF MINES
OIL AND GAS DIVISION
CHARLESTON

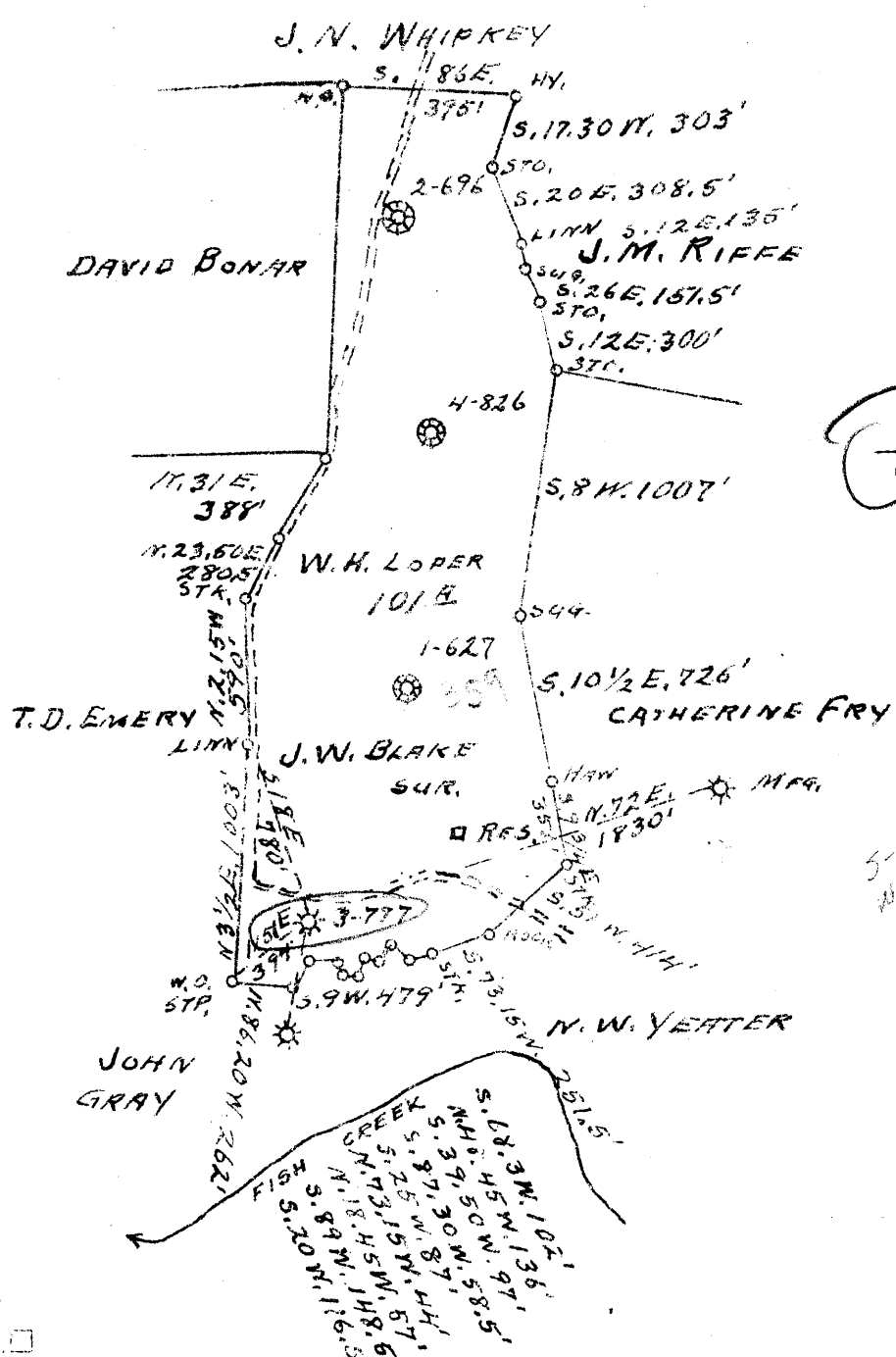
WELL LOCATION MAP

FILE No. MARS-401-P A 787

Nov 787

+ DENOTES LOCATION OF WELL ON UNITED STATES TOPOGRAPHIC MAPS. SCALE 1 TO 62,500. LATITUDE AND LONGITUDE LINES BEING REPRESENTED BY BORDER LINES AS SHOWN.

- DENOTES ONE INCH SPACES ON BORDER LINE OF ORIGINAL TRACING.



New Location
 Drill Deeper
 Abandonment

Company CARNEGIE NATURAL GAS
 Address PITTSBURGH, PENNA.
 Farm W.H. LOPER
 Tract ONE Acres 101 Lease No. E-9805-48
 Well (Farm) No. 3 Serial No. 777
 Elevation (Spirit Level) 1180'
 Quadrangle CAMERON S.E. 1/4 SC 10
 County MARSHALL District LIBERTY
 Engineer D.T. BRITTON
 Engineer's Registration No. _____
 File No. _____ Drawing No. _____
 Date 3-25-1944 Scale 1" = 800'

STATE OF WEST VIRGINIA
 DEPARTMENT OF MINES
 OIL AND GAS DIVISION
 CHARLESTON

WELL LOCATION MAP
 FILE NO. MARS-155
 Now 401A -> 787

+ Denotes location of well on United States Topographic Maps. scale 1 to 62,500, latitude and longitude lines being represented by border lines as shown.
 - Denotes one inch spaces on border line of original tracing.

WEST VIRGINIA DEPARTMENT OF MINES
OIL & GAS DIVISION
WELL RECORD

202787

Permit No. Mars 155
Cameron Quad.
Company
Address
Farm
Location
Well No
District
Surface
Mineral
Commenced
Completed
Open flow
Volume
Rock Pressure

Carnegie Natural Gas Company
Hundred, W.Va.
W.H. Loper Acres 101
Fish Creek
E-777 Elev. 1180'
Liberty Marshall County
J.W. Blake, Cameron, W.Va.Rd.
See below
Aug. 15, 1944
Sept. 13, 1944
50/10ths W in 2"
298,000 C.F.
250 lbs. 24 hrs.

Gas Well
CASING & TUBING

O.W. Anchor
Size 3 x 6 5/8"
Depth 2606'
Perf. top 2674
Perf. bot 2695

| | | | | | |
|---------------------------|------|---|------|------|---------------|
| ✓ Maxon Sand | Wh | H | 1784 | 1830 | |
| ✓ Pencil Cave | Dk | S | 1830 | 1831 | |
| ✓ Big Lime | Wh | H | 1831 | 1880 | |
| ✓ Big Injun | Gr | H | 1880 | 2140 | |
| Slate Shells | Dk | S | 2140 | 2270 | |
| ✓ Squaw Sand | Dk | H | 2270 | 2305 | |
| Slate | Dk | S | 2305 | 2450 | |
| Lime | Dk | H | 2450 | 2485 | |
| ✓ Gantz Sand | Gr | H | 2485 | 2505 | |
| Slate | Dk | S | 2505 | 2525 | |
| Slate | Dk | S | 2525 | 2550 | |
| Slate | Gr | S | 2550 | 2570 | |
| Rock | Pink | S | 2570 | 2575 | |
| Slate | Gr | S | 2575 | 2585 | |
| Slate | Gr | S | 2585 | 2600 | |
| Slate | Gr | S | 2600 | 2677 | |
| ✓ 30' Sand 50' | Gr | H | 2677 | 2695 | Gas 2677-2682 |
| TOTAL DEPTH | | | | 2695 | |

OWNERS OF MINERAL RIGHTS

John C. Hopkins, Moundsville, W.Va.
Sam W. Booher, Moundsville, W.Va.
Leota H. Benedum, Cameron, W.Va.
Pearl Hicks, Cameron, W.Va.

*2695
1830
965*

*1831
110

1941
1180

761*

Liberty District, Marshall County, W. Va.

By Carnegie Natural Gas Co.

Cameron SE Quadrangle.

On 101 acres; lease No. 9805.

Drilling commenced Nov. 21, 1917; completed, Jan. 30, 1918.

No elevation.

2,750,000 cu. ft. gas at 1784-1800'.

Drilled deeper from 1800', May 27, 1926.

Gas, 214,000 cu. ft., 1813-17'.

Record from Wilcox 10-15-39.

MARS-155
Nov 787

| | Top. | Bottom. |
|--|------|---------|
| ✓ Mapletown (Sewickley) Coal | 652 | - 659 |
| ✓ Pittsburgh Coal (gas show) | 752 | - 760 |
| ✓ Little Dunkard Sand (MOUNDSVILLE) | 1092 | - 1097 |
| ✓ Big Dunkard Sand | 1222 | - 1252 |
| ✓ 1st Gas Sand (show gas, 1400') (GAS) | 1365 | - 1458 |
| ✓ 1st Salt Sand (LOWER GAS) | 1467 | - 1497 |
| ✓ 2nd Salt Sand (2nd COW RUN) | 1532 | - 1572 |
| ✓ 3rd Salt Sand (1st SALT) | 1627 | - 1657 |
| ✓ Merton Sand (gas at 1784-1800'; 2,750,000 Salt cu. ft.; gas, 1813-17', 214,000 cu. ft.) | 1784 | - 1825 |
| DRILLED DEEPER from 1800', 5-27-26: | | |
| Total depth | | 1870 |