

0 1 2 3 LATITUDE 39 ° 50 ' 1

1

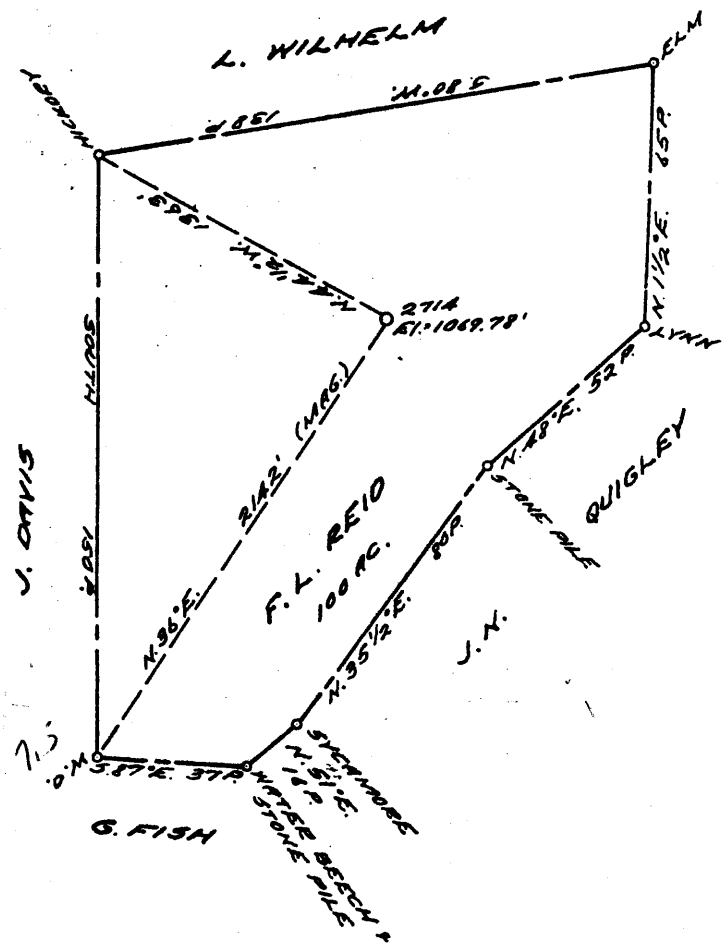
2

3

LONGITUDE 80 ° 30 ' 30

plot

+ 800'S  
442'S



18270

800  
442

COAL OWNED BY RECONDITION & PART. PLUG.

NEW LOCATION.....

DRILL DEEPER.....

ABANDONMENT.....

0-25-24

COMPANY THE MANUFACTURERS LIGHT & HEAT

ADDRESS 800 UNION TRUST BLDG., PGH., PA

FARM F. L. REID

TRACT \_\_\_\_\_ ACRES 100 LEASE No. 5130

WELL (FARM) No. 1 SERIAL No. 2714

ELEVATION (SPIRIT LEVEL) 1069.78'

QUADRANGLE CAMERON

COUNTY MARSHALL DISTRICT LIBERTY

ENGINEER Robert M. Shell

ENGINEER'S REGISTRATION No. 361-E (J.F.)

FILE No. \_\_\_\_\_ DRAWING No. Y-25-149

DATE 14 APR. 1960 SCALE 1" = 800'

STATE OF WEST VIRGINIA  
DEPARTMENT OF MINES  
OIL AND GAS DIVISION  
CHARLESTON

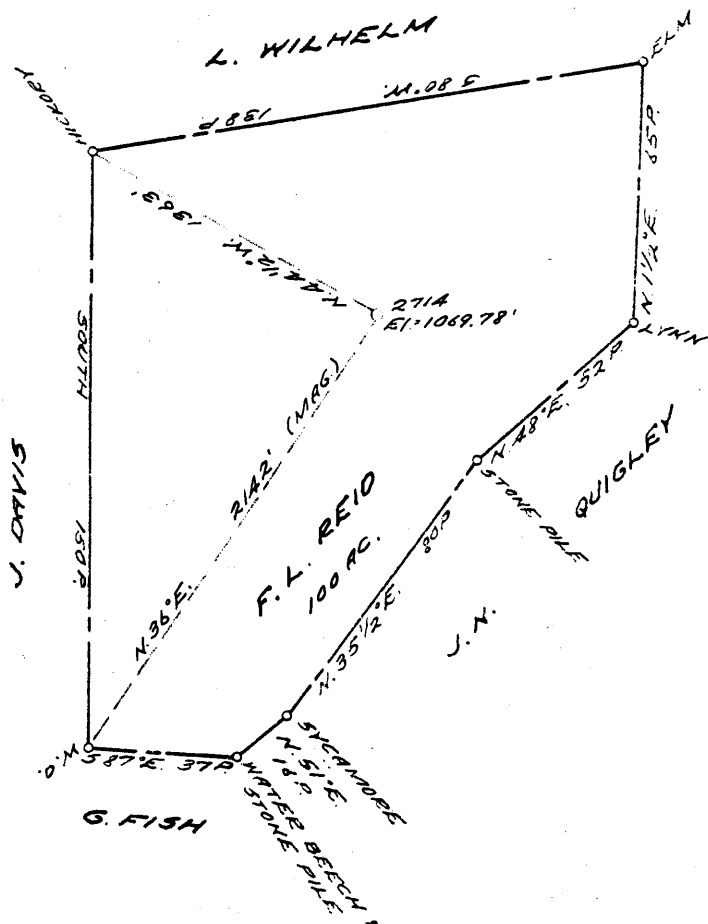
WELL LOCATION MAP

FILE No. MARS-418-P

SEC: 051-0772-T

+ DENOTES LOCATION OF WELL ON UNITED STATES TOPOGRAPHIC MAPS, SCALE 1 TO 62,500. LATITUDE AND LONGITUDE LINES BEING REPRESENTED BY BORDER LINES AS SHOWN.

- DENOTES ONE INCH SPACES ON BORDER LINE OF ORIGINAL TRACING.



2.80S  
4.42W

COAL OWNED BY \_\_\_\_\_  
 RECONDITION & PART. PLUG.

NEW LOCATION.....

DRILL DEEPER.....

ABANDONMENT.....

0-25-24

COMPANY THE MANUFACTURERS LIGHT & HEAT

ADDRESS 800 UNION TRUST BLDG., PGH., PA

FARM F. L. REID

TRACT \_\_\_\_\_ ACRES 100 LEASE No. 5130

WELL (FARM) No. 1 SERIAL No. 271A

ELEVATION (SPIRIT LEVEL) 1069.78'

QUADRANGLE CAMERON

COUNTY MARSHALL DISTRICT LIBERTY

ENGINEER Robert M. Hull

ENGINEER'S REGISTRATION No. 361-E (J.F.)

FILE No. \_\_\_\_\_ DRAWING No. Y-25-149

DATE 12 APR. 1960 SCALE 1" = 800'

STATE OF WEST VIRGINIA  
 DEPARTMENT OF MINES  
 OIL AND GAS DIVISION  
 CHARLESTON

WELL LOCATION MAP

FILE No. MARS-418-Pp 9 992

+ DENOTES LOCATION OF WELL ON UNITED STATES TOPOGRAPHIC MAPS, SCALE 1 TO 62,500. LATITUDE AND LONGITUDE LINES BEING REPRESENTED BY BORDER LINES AS SHOWN.

- DENOTES ONE INCH SPACES ON BORDER LINE OF ORIGINAL TRACING.

Liberty District, Marshall County, W. Va.

By Manufacturers Light & Heat Co.

Completed Feb. 7, 1922.

Record from Mr. Schillhalm Sept. 30, 1939.

2772



	Top.	Bottom.
Pittsburgh Coal	700	706
Murphy Sand	794	836
Little Dunkard Sand	1090	1098
Big Dunkard Sand	1196	1236
Gas Sand	1335	1405
1st Salt Sand	1542	1560
2nd Salt Sand	1699	1732
Big Lime	1803	1863
Big Injun Sand (gas show, 1900-1944')	1868	2100
Gordon Stray Sand (pay gas, 2653')	2650	2677
Gordon Sand (small gas, 2718')	2708	2738
4th Sand	2764	2767
5th Sand	2797	2798
Total depth		2852