

INSTRUCTIONS

✓ 39 52 30 3600 W

1) Attach a photo copy of the location of the well on a 7.5 minute Quadrangle with the corresponding Longitude and Latitude.
2) Designate the location of the well with the symbol(+).

RECEIVED
WV Division of Environmental Protection
JUL 09 1993
Permitting
Bureau of Oil & Gas

17589

SEE ATTACHED

+

1.375
0.70

7,200' S
80° 32' 30"

425 S
290 W

I, the undersigned, hereby certify that this plat is correct to the best of my knowledge and belief.

SIGNED [Signature]
TITLE Spec

W.R.
HUGHES WELL
DRILLED 1924

DATE JULY 2, 1993
OPERATORS WELL NO. _____
API WELL NO. 051-749-N

STATE OF WEST VIRGINIA
DEPARTMENT OF ENERGY
OIL AND GAS DIVISION

WELL TYPE: OIL _____ GAS LIQUID INJECTION _____ WASTE DISPOSAL _____
TYPE "GAS" PRODUCTION STORAGE _____ DEEP _____ SHALLOW _____

LOCATION: ELEVATION 1385' B. WATER SHED _____
DISTRICT CAMERON COUNTY MARSHALL
QUADRANGLE CAMERON EC 278

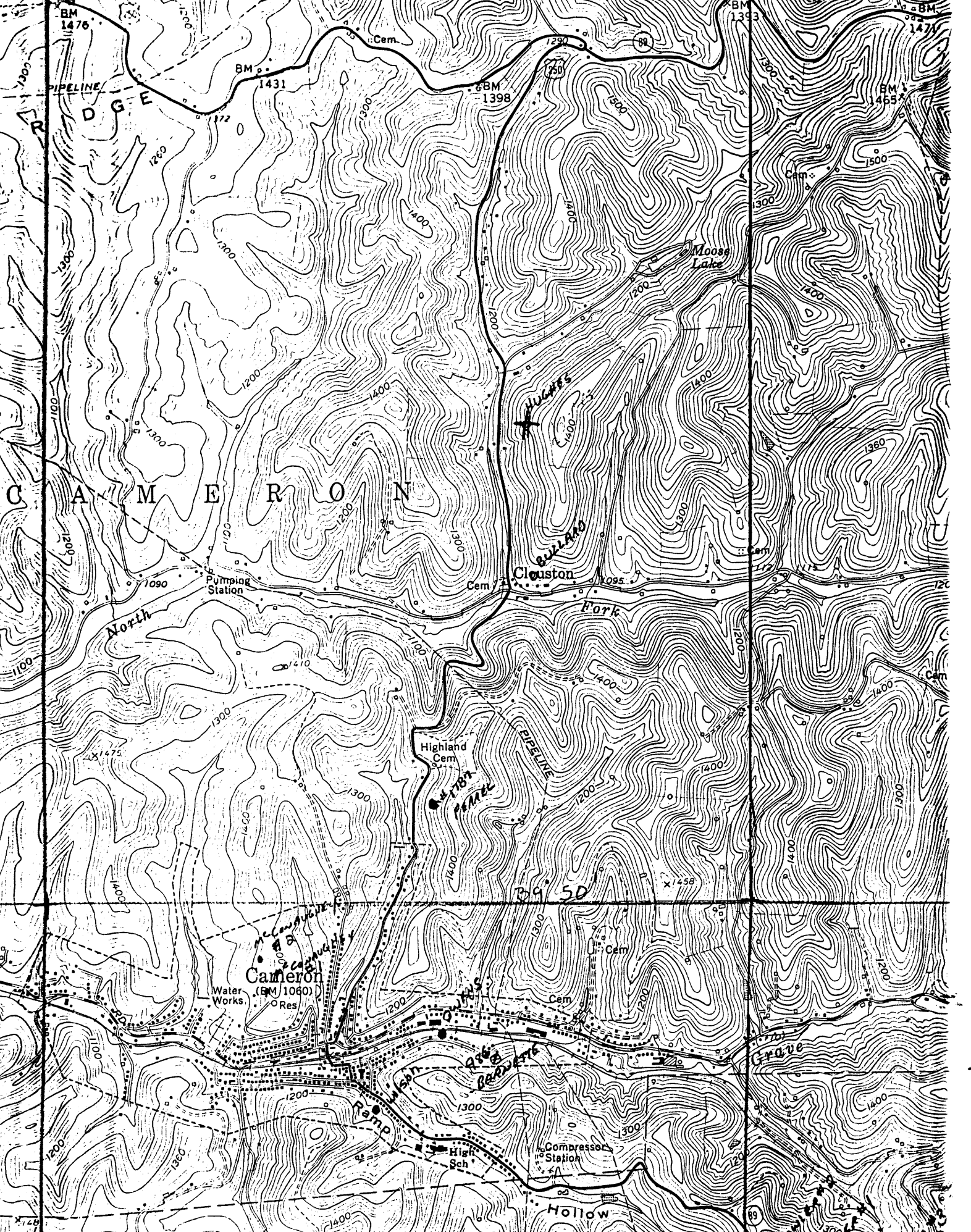
SURFACE OWNER J.M. EAGAN ACREAGE _____
OIL & GAS ROYALTY OWNER ELANOR SAMPLE LEASE ACREAGE 100
LEASE NO. _____ JUL 16 1993

PRODUCING FORMATION GORDON 838° TOTAL DEPTH 2930'

WELL OPERATOR CAMERON GAS CO. DESIGNATED AGENT C.R. COLEMAN

ADDRESS 8 BOALINE AVE ADDRESS Same

CAMERON W.V. 26033 646 (722)



C A M E R O N

North

Clouston

Cameron

Hollow

Moose Lake

Clouston Park

Highland Cem

Water Works

High Sch

Compressor Station

Ramp

Res

McCombs

Highland Cem

Highland Cem

Highland Cem

Highland Cem

Highland Cem

Highland Cem

Highland Cem

Highland Cem

Highland Cem

Highland Cem

Highland Cem

Highland Cem

Highland Cem

Highland Cem

Highland Cem

Highland Cem

Highland Cem

Highland Cem

Highland Cem

Highland Cem

Highland Cem

Highland Cem

Highland Cem

Highland Cem

Highland Cem

Highland Cem

Highland Cem

Highland Cem

Highland Cem

Highland Cem

Highland Cem

Highland Cem

Highland Cem

Highland Cem

Highland Cem

Highland Cem

Highland Cem

Highland Cem

Highland Cem

Highland Cem

Highland Cem

Highland Cem

Highland Cem

Highland Cem

Highland Cem

Highland Cem

Highland Cem

Highland Cem

Highland Cem

Highland Cem

Highland Cem

Highland Cem

Highland Cem

Highland Cem

Highland Cem

Highland Cem

Highland Cem

Highland Cem

Highland Cem

Highland Cem

Highland Cem

Highland Cem

Highland Cem

Highland Cem

Highland Cem

Highland Cem

Highland Cem

Highland Cem

Highland Cem

Highland Cem

Highland Cem

Highland Cem

Highland Cem

Highland Cem

Highland Cem

Highland Cem

Highland Cem

Highland Cem

Highland Cem

Highland Cem

Highland Cem

Highland Cem

Highland Cem

Highland Cem

Highland Cem

Highland Cem

Highland Cem

Highland Cem

Highland Cem

Highland Cem

Highland Cem

Highland Cem

Highland Cem

Highland Cem

Highland Cem

Highland Cem

Highland Cem

Highland Cem

Highland Cem

Highland Cem

Highland Cem

Highland Cem

Highland Cem

Highland Cem

Highland Cem

Highland Cem

Highland Cem

Highland Cem

Highland Cem

Highland Cem

Highland Cem

Highland Cem

Highland Cem

Highland Cem

Highland Cem

Highland Cem

Highland Cem

Highland Cem

Highland Cem

Highland Cem

Highland Cem

Highland Cem

Highland Cem

Highland Cem

Highland Cem

Highland Cem

Highland Cem

Highland Cem

Highland Cem

Highland Cem

Highland Cem

Highland Cem

Highland Cem

Highland Cem

Highland Cem

Highland Cem

Highland Cem

Highland Cem

Highland Cem

Highland Cem

Highland Cem

Highland Cem

Highland Cem

Highland Cem

Highland Cem

Highland Cem

Highland Cem

Highland Cem

Highland Cem

Highland Cem

Highland Cem

Highland Cem

Highland Cem

Highland Cem

Highland Cem

Highland Cem

Highland Cem

Highland Cem

Highland Cem

Highland Cem

Highland Cem

Highland Cem

Highland Cem

Highland Cem

Highland Cem

Highland Cem

Highland Cem

Highland Cem

Highland Cem

Highland Cem

Highland Cem

Highland Cem

Highland Cem

Highland Cem

Highland Cem

Highland Cem

Highland Cem

Highland Cem

Highland Cem

Highland Cem

Highland Cem

Highland Cem

Highland Cem

Highland Cem

Highland Cem

Highland Cem

Highland Cem

Highland Cem

Highland Cem

Highland Cem

Highland Cem

Highland Cem

Highland Cem

Highland Cem

Highland Cem

Highland Cem

Highland Cem

Highland Cem

Highland Cem

Highland Cem

Highland Cem

Highland Cem

Highland Cem

Highland Cem

Highland Cem

Highland Cem

Highland Cem

Highland Cem

Highland Cem

Highland Cem

Highland Cem

Highland Cem

Highland Cem

Highland Cem

Highland Cem

Highland Cem

Highland Cem

Highland Cem

Highland Cem

Highland Cem

Highland Cem

Highland Cem

Highland Cem

Highland Cem

Highland Cem

Highland Cem

Highland Cem

Highland Cem

Highland Cem

Highland Cem

Highland Cem

Highland Cem

Highland Cem

Highland Cem

Highland Cem

Highland Cem

Highland Cem

Highland Cem

Highland Cem

Highland Cem

Highland Cem

Highland Cem

Highland Cem

Highland Cem

Highland Cem

Highland Cem

Highland Cem

Highland Cem

Highland Cem

Highland Cem

Highland Cem

Highland Cem

Highland Cem

Highland Cem

Highland Cem

Highland Cem

Highland Cem

Highland Cem

Highland Cem

Highland Cem

Highland Cem

Highland Cem

Highland Cem

Highland Cem

Highland Cem

Highland Cem

Highland Cem

Highland Cem

Highland Cem

Highland Cem

Highland Cem

Highland Cem

Highland Cem

Highland Cem

Highland Cem

Highland Cem

Highland Cem

Highland Cem

Highland Cem

Highland Cem

Highland Cem

Highland Cem

Highland Cem

Highland Cem

Highland Cem

Highland Cem

Highland Cem

Highland Cem

Highland Cem

Highland Cem

Highland Cem

Highland Cem

Highland Cem

Highland Cem

Highland Cem

Highland Cem

Highland Cem

Highland Cem

Highland Cem

Highland Cem

Highland Cem

Highland Cem

Highland Cem

Highland Cem

Highland Cem

Highland Cem

Highland Cem

Highland Cem

Highland Cem

Highland Cem

Highland Cem

Highland Cem

Highland Cem

Highland Cem</

W. R. HUGHES NO. 1 WELL.

NO. 1 051 749

.....District, Marshall County, W. Va.

By Cameron Heat & Light Co.

Elevation... 1305.....

11-9-24, test, 13/10ths in 2", 168 M.

Rock pressure, 140 lbs. Capacity, 278,000 cu. ft.

Material: 10" casing, 1155'; 6⁵/₈"⁵, 2177'; 1 - 18" x 16' wood conductor;
 1 - 8¹/₂ x 10" casing-head; 1 - 6⁵/₈ x 2" Dresser anchor packer;
 1 - 6⁵/₈ x 8¹/₂" Spang screw bottom-hole packer; 2 - 2" Gate valves;
 1 Set 6⁵/₈" Moser casing clamps; 1 - 2" Ell, heavy; 3 - 2" Nip-
 ples; 1 - 2" Plug; 1 - 2" x 1¹/₂" Blind Flg. Union; 1 - 1¹/₂" Iron Step
 Cock; 1 - Wood rig.

May 11, 1938, Ran 3" tubing on screw-down packer, 2858', in 50-Ft. Sand.
 Well shot from 2899 to 2910 with 40 qts. "dope"; tested after cleaning
 out, 135,000 cu. ft. --Tayler.

Record from Mr. Straub 9-11-39.

	Top.	Bottom.
Waynesburg Coal	610	- ...
Mapletown (Sewickley) Coal	810	- ...
Pittsburgh Coal (water, 1 bailer per hour)	910	- 916
Sand-Lime	1245	- 1255
Little Dunkard Sand	1295	- 1345
Big Dunkard Sand	1492	- 1525
Salt Sand (gas at 1820')	1815	- 1850
Big Lime	2000	- 2055
Big Injun Sand	2055	- 2305
Thirty-foot Sand	2643	- 2740
Gantz Sand	2740	- 2790
Fifty-foot Sand	2842	- 2870
Nineveh 30-Ft. Sand (gas at 2899')	2898	- 2923
Total depth		2930

N.R. Hughes #1

May 1924
10 00 00

1692 135 20 - 1694

Well Record

Waynesburg Coal	610
Mapletown "	810
Pittsburgh "	915-916
Sand Lime	920-957-1350
Little Dunkard	1295-1845
Big "	1492-1525
Salt Sand	1815-1850
Big Lime	2000-2055
Big Limestone	2055-2085
Thirty foot	2643-2740
Sandy	2740-2795
Fifty foot	2870-2890
Nineveh thirty foot	2895-2923
Total depth	2930

Rock Pressure 140 lbs
Capacity 275,000 cu. ft.

Material

- 10" Casing 1155 ft ✓
- 6 5/8" " 2177 "
- ~~10" Casing~~
- 1- 18" x 16" Hood Conductor
- 1- 8 1/4" x 10" Casing Head
- 1- 6 5/8" x 3" Dresser Anchor Packer
- 1- 6 5/8" x 8 1/4" Spring Screw Bottom Hole Packer
- 2- 2" Gate Valves
- 1- Set 6 5/8" Morse Casing Clamps
- 1- 2" Ell. Lug.
- 3- 2" Nipples
- 1- 2" Plug
- 1- 2" x 1/2" Blind Flg. Union
- 1- 1/2" Iron Stop Cock
- 1- Hood Rig.

1928
May 11 Run 3" Tubing on screw down Packer 2858 ft
in 50 ft sand.
Well shut from 2890 to 2910 - 40 ft "dope"
Tested after cleaning out 135,000

	Feet	
Waynesburg Coal	610-	
Mapletown Coal	810	
Pittsburgh Coal	910-9916	water 1 bailer per hour
Sand line	1245-1258	
Little Dunkard	1295-1345	
Big Dunkard	1492-1525	
Salt Sand	1818-1850	gas at 1820
Big Lime	2000-2055	
Big Injun	2055-2305	
Thirty Foot	2643-2740	
Gants	2740-2790	
Fifty Foot	2842-2890	
Nineveh Thirty Foot	2898-2925	gas at 2899
Total depth	2930	

10 inch casing 1155 feet
 6-5/8 inch casing 2177 feet
 2 inch tubing 2930 feet

May 11, 1928 well was cleaned out run 5 inch tubing on screw down packer
 2850 feet in Fifty foot sand well shot from 2899 to 2910 40 qts

Fry-Hughes Well
Cameron Dist., Marshall County, W. Va.

651 749
Jan 21 / 1928

Well Record

Waynesburg Coal	610	
Mapletown Coal	810	
Pittsburgh Coal	2075	2916 Water; one bailer
Sand Lime	1235	1255
Little Dunkard	1295	1345
Big Dunkard	1492	1525
Salt Sand	1815	1850 Gas at 1820'
Big Lime	2000	2055
Big Injun	2055	2305 ✓ 9.30 - 45' - 6' pad
Thirty Foot	2643	2740
Gantz	2740	2790
Fifty Foot	2842	2870
Nineveh thirty foot	2898	2923 Gas at 2899'
Total Depth		2930
Rock pressure		140 lbs.
Capacity		278,000 cu. ft.

Gordon →

Material

- 10" casing: 1155 ft. - pulled
- 6 5/8" " 2177 "
- 2" casing 250 "
- 1- 18" x 16" Wood Conductor ✓
- 1- 8" x 10" Casing Head ✓
- 1- 6 5/8" x 2" Dresser Anchor Packer ✓
- 1- 6 5/8" x 8" Spang Screw Bottom Hole Packer .
- 2- 2" Gate Valves
- 1- Set 6 5/8" Moser Casing Clamps
- 1- 2" Ell, hvy.
- 3- 2" Nipples
- 1- 2" Plug
- 1- 2" x 2" Blind Flg. Union
- 1- 1/2" Iron Stop cock
- 1- Wood Rig.

2998
910
1988

Run 3 in tubing May 11 / 1928
Set screw down packer at 2858
in 50 ft sand G.W. Taylor - Sev

2930
2860
73

2740
290
2000

2930
910
2020

STATE OF WEST VIRGINIA
DIVISION OF ENVIRONMENTAL PROTECTION
SECTION OF OIL AND GAS

WELL REGISTER ASSIGNMENT

This API Number 47- 51-00749, issued to CAMERON GAS COMPANY is evidence of permission to operate the well that is referenced at the location described on the attached plat, subject to the provisions of Chapters 22 and 22B of the West Virginia Code of 1931, as amended, and all rules and regulations promulgated thereunder. The name and telephone number of the Oil and Gas Inspector for this well is RANDAL MICK -
304-986-3324.

Spills or emergency discharges must be reported to 1-800-654-3312.

Failure to abide by all statutory and regulatory provisions governing all duties and operations hereunder may result in suspension or revocation of your permits and in addition may result in civil and/or criminal penalties.

The enclosed WR-35 must be completed by you and returned to this office. In addition annual production reports must be submitted on this well and failure to do so may require you to plug the well.

Theodore M. Streit
Chief

By: 

Title: _____

Operator's Well No: W.R.HUGHES #1

Farm Name: EAGAN, J.M.

API Well Number : 47- 51-00749 N

Date Issued : 07/09/93