

39 47 30

Latitude 39° 50'

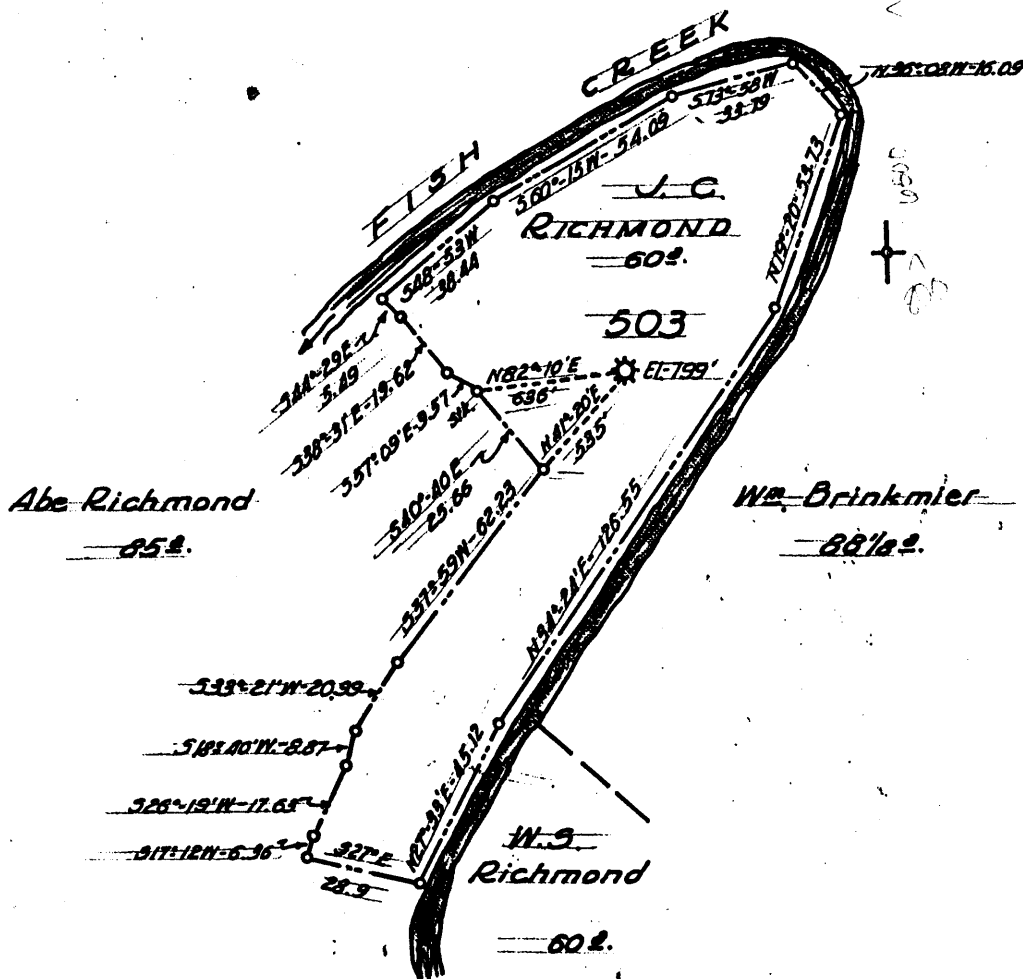
Longitude 80° 40'  
80 42 30

**RECEIVED**

SEP 17 91

Division of Energy  
Oil and Gas Section

114  
020  
©



4.025  
2.40W

New Location   
Drill Deeper   
Abandonment

FORMERLY H.N.G.G. WELL NO. 503

Company A.M. SNIDER 37500  
 Address HUNDRED, W. VA.  
 Farm J.C. RICHMOND  
 Tract \_\_\_\_\_ Acres 60 Lease No. \_\_\_\_\_  
 Well (Farm) No. \_\_\_\_\_ Serial No. 503  
 Elevation (Spirit Level) 799  
 Quadrangle CAMERON <sup>SW</sup> Glen Easton  
 County MARSHALL District MEADE  
 Engineer HENRY A. HAIN  
 Engineer's Registration No. 3150  
 File No. A.M.S-23-60 Drawing No. \_\_\_\_\_  
 Date \_\_\_\_\_ Scale 1" = 50 POLES

STATE OF WEST VIRGINIA  
DEPARTMENT OF MINES  
OIL AND GAS DIVISION  
CHARLESTON

**WELL LOCATION MAP**  
FILE NO. 051-0733

+ Denotes location of well on United States Topographic Maps, scale 1 to 62,500, latitude and longitude lines being represented by border lines as shown.

- Denotes one inch spaces on border line of original tracing.