

Latitude 39° 45'

5610  
1.04  
3.30

5700

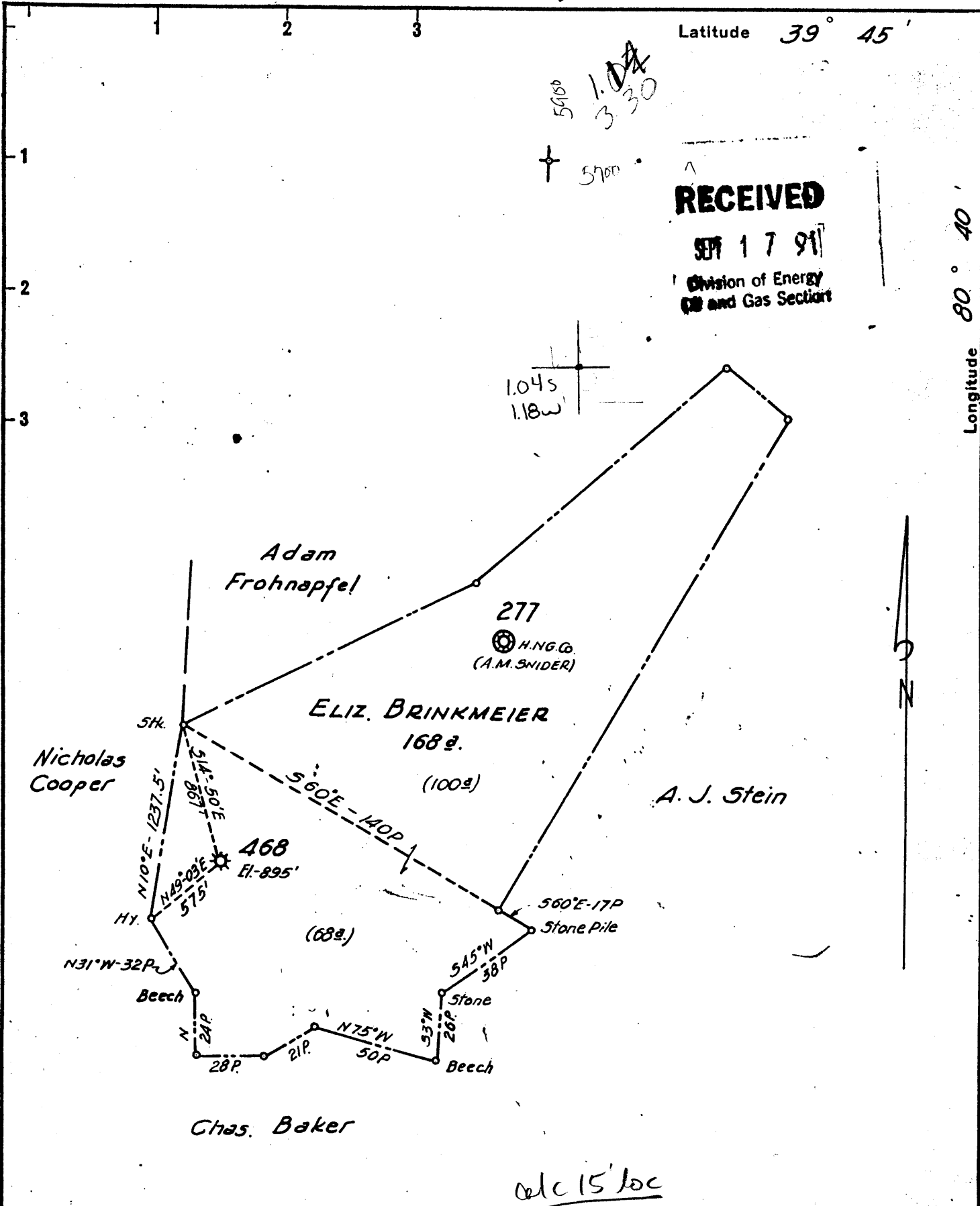
RECEIVED

SEP 17 1911

Division of Energy  
and Gas Section

Longitude 80° 40' 30"

1.045  
1.18w



calc 15' loc  
1.045  
3.40w

New Location...   
 Drill Deeper...   
 Abandonment...  468

FORMERLY H.N.G.CO. WELL No. 468

Company A. M. SNIDER 375°  
 Address HUNDRED, W. VA.  
 Farm ELIZ. BRINKMEIER  
 Tract \_\_\_\_\_ Acres 168 Lease No. 2815  
 Well (Farm) No. \_\_\_\_\_ Serial No. 468  
 Elevation (Spirit Level) 895'  
 Quadrangle LITTLETON<sup>NW</sup> (wileyville 75)  
 County MARSHALL District MEADE  
 Engineer HENRY A. HAIN  
 Engineer's Registration No. 3150  
 File No. A.M.S. Drawing No. \_\_\_\_\_  
 Date DEC. 12, 1959 Scale 1" = 50 POLES

STATE OF WEST VIRGINIA  
 DEPARTMENT OF MINES  
 OIL AND GAS DIVISION  
 CHARLESTON

WELL LOCATION MAP  
 FILE NO. 051-0729

+ Denotes location of well on United States Topographic Maps, scale 1 to 62,500, latitude and longitude lines being represented by border lines as shown.

- Denotes one inch spaces on border line of original tracing.