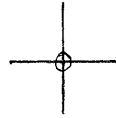


LATITUDE 39°55'00"

9



00, 00, 00
LONGITUDE

7'5 OGIS topo location

7.5' 10c	<u>1.485</u> ✓	15' 10c	<u>1.485</u>
	<u>1.10W</u>	(calc.)	<u>1.10W</u>

Company _____

Farm _____

Cameron EC

Quad MAJORSVILLE 7 1/2'

County MARSHALL

District CAMERON

Elev. 1120± (topo)

WELL LOCATION MAP

File No. 051 - 678

051-678

J Jackson

(FRY)

Gas Well

WELL NO. 1 LESSOR McGinnis LEASE NO. ACRES 50 ELEVATION B L DIV. DIST. CARRISDA

POST OFFICE BOX 44
 ALEPO, PENNSYLVANIA 15310
 PHONE 412/885-5100



FORMATIONS		TOP	BOTTOM	GAS AT	OK AT	WATER AT	FORMATIONS		TOP	BOTTOM	GAS AT	OK AT	WATER AT	CLASSIFICATION			
FORMATIONS		TOP	BOTTOM	GAS AT	OK AT	WATER AT	FORMATIONS		TOP	BOTTOM	GAS AT	OK AT	WATER AT	SIZE	PUT IN	DATE	TILED
WAYNESBURG COAL							100' SAND							13"			
MAPLE TOWN COAL							30' SAND (NINEVAH)							10"			
REDSTONE COAL							SNEE SAND (BLUE MON.)							9 1/2"	58.2		
PITTSBURGH COAL							GORR. STRAY SAND							9 1/2"	58.2		
MURPHY SAND							GORDON SAND (THIRD)							9 1/2"	58.2		
AMES LIMESTONE							4th SAND							9 1/2"	58.2		
BAKERSTOWN COAL							5th SAND (MCDONALD)							9 1/2"	58.2		
L. DUNKARD SAND							5th A SAND							9 1/2"	58.2		
COAL							BAYARD SAND (SIXTH)							9 1/2"	58.2		
B. DUNKARD SAND							BAYARD STRAY SAND							9 1/2"	58.2		
UPPER FREEPORT COAL							BAYARD STRAY STR. SD.							9 1/2"	58.2		
L. FREEPORT COAL							ELIZABETH SAND							9 1/2"	58.2		
U. KITTI. COAL							1st WARREN SAND							9 1/2"	58.2		
M. KITTI. COAL							2nd WARREN SAND							9 1/2"	58.2		
L. KITTI. COAL							SPEECH STRAY SAND							9 1/2"	58.2		
VAMPORT LIME							SPEECHLEY SAND							9 1/2"	58.2		
CLABRON COAL							SAND							9 1/2"	58.2		
BROOKVILLE COAL							1st SAND							9 1/2"	58.2		
1st GAS SAND							2nd SAND							9 1/2"	58.2		
MERCER COAL							SHEFFIELD SAND							9 1/2"	58.2		
1st SALT SAND							1st BRADFORD SAND (BENSON)							9 1/2"	58.2		
2nd SALT SAND							2nd BRADFORD SAND							9 1/2"	58.2		
3rd SALT SAND							3rd BRADFORD SAND							9 1/2"	58.2		
MAXTON SAND														9 1/2"	58.2		
LITTLE LIME														9 1/2"	58.2		
PENCIL CAVE														9 1/2"	58.2		
BIG LIME (REEMER)														9 1/2"	58.2		
BIG INJUN SAND														9 1/2"	58.2		
SQUAW SAND														9 1/2"	58.2		
2nd GAS SAND														9 1/2"	58.2		
MURRYSVILLE SAND (BEREN)														9 1/2"	58.2		
TOTAL DEPTH														9 1/2"	58.2		
TOTAL DEPTH														9 1/2"	58.2		

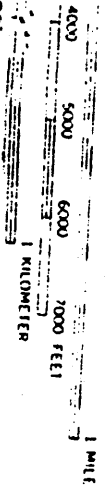
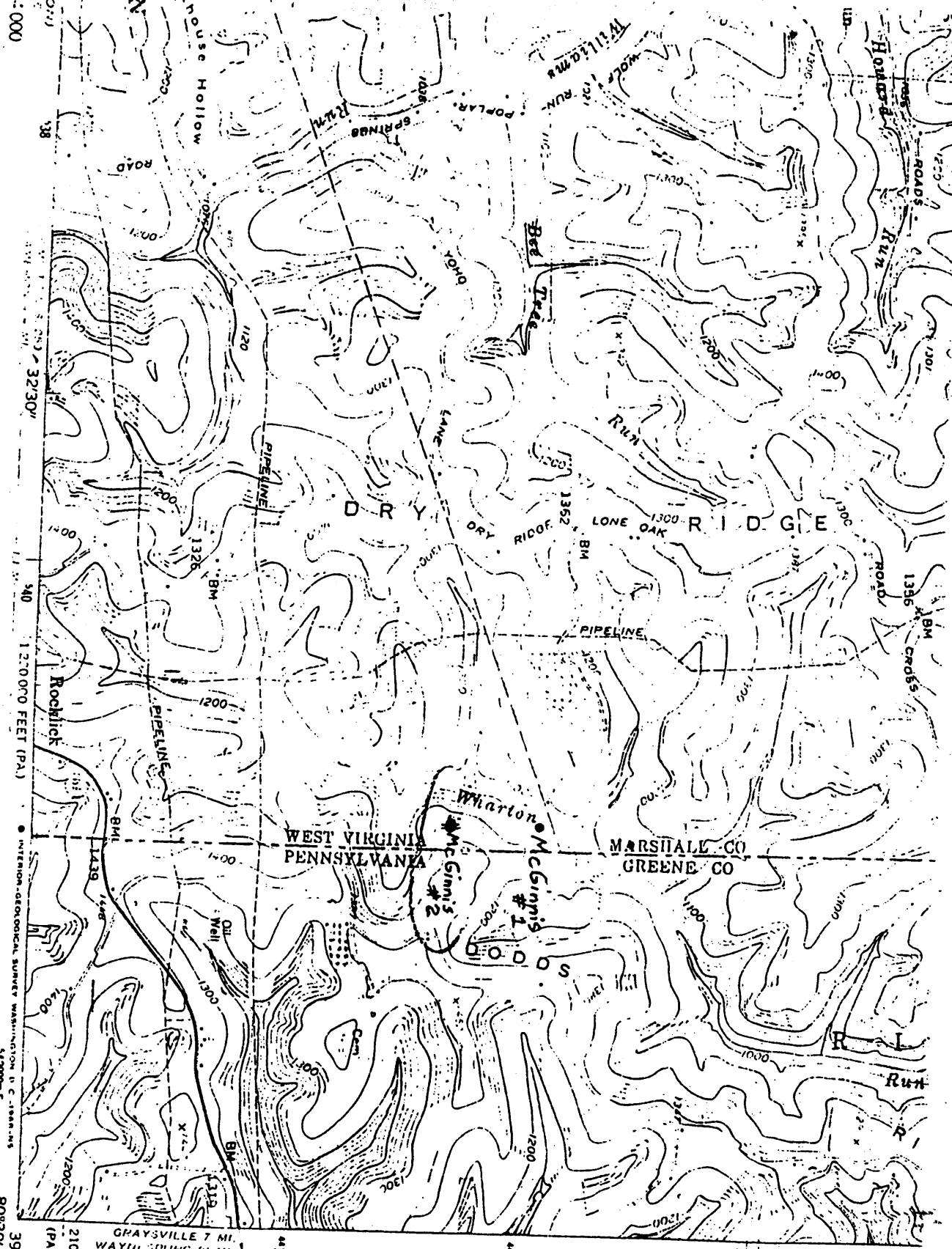
OPEN FLOW VOLUME & PRESSURE DATA			
DATE	READING	LICHD	OPENING TURNING
			1 2 3 4 5 15 30 60 24 HR. R.P. 18 DAY R.P.
			VOLUME PRODUCING SAND
TOTAL DEPTH 1793			
TOTAL DEPTH			

PIPE LINE DATA			
DATE	READING	LICHD	OPENING TURNING
			1 2 3 4 5 15 30 60 24 HR. R.P. 18 DAY R.P.
			VOLUME PRODUCING SAND
TOTAL DEPTH 1793			
TOTAL DEPTH			

REPAIR AND DRILLING DEEPER				SHOOTING RECORD							
W/D-M/O NO.	DATE	REASON	COMMENCED	COMPLETED	ON/DG TO	ON/DG FROM	VOLUME	DATE	AMT.	DEPTH	VOLUME

PIPE LINE DATA			
DATE	TURNED IN LINE	DATE DISCONNECTED	REMARKS

VOLUME FACTOR DATA			
DATE	TURNED IN LINE	DATE DISCONNECTED	REMARKS



1:20 FEET
514 LEVEL

ROAD CLASSIFICATION

- Heavy-duty
- Medium-duty
- Light-duty
- Unimproved dirt
- U. S. Route
- State Route

210 000 FEET
(PA.)

GRAYSVILLE 7 MI.
WAYNEBURG 21 MI.

051-679 ✓ McGinnis #2
051-679 McGinnis #1

MAJORSVILLE, W. VA. - PA

NEW FRECKORY
1963 1/4 SW