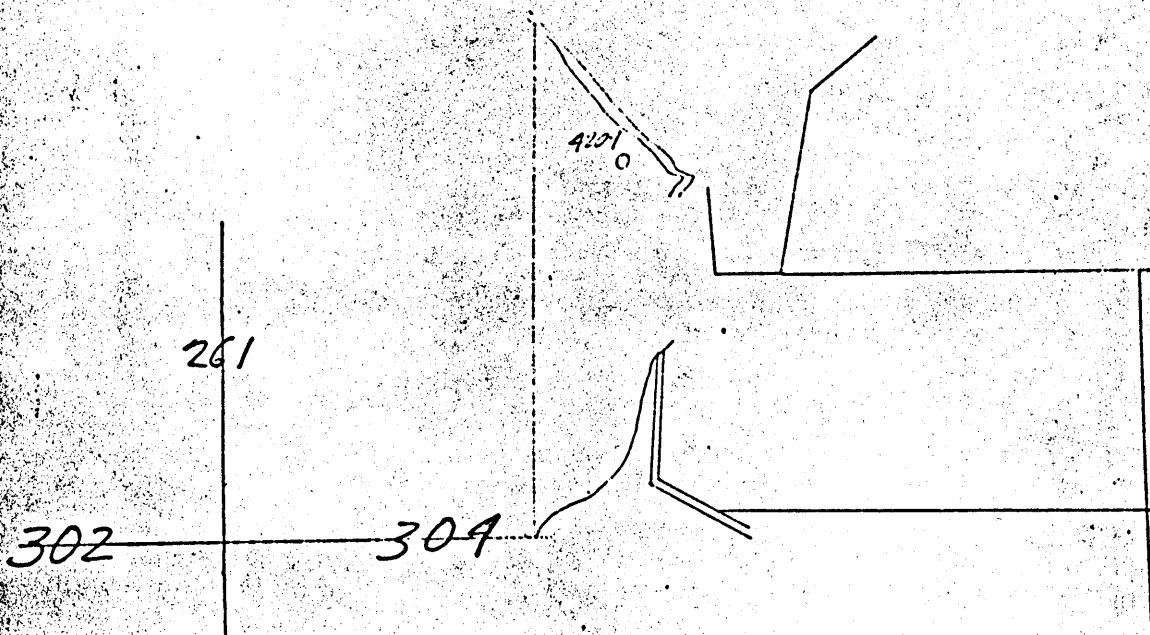


COMPANY COLUMBIA GAS TRANSMISSION CORPORATION MAP NO. Cameron
FARM M. Coaster WELL NO. 604204
DISTRICT Liberty COUNTY Marshall STATE WV
SCALE: 1" = 1320' LONG. 80° 33' 49" LAT. 39° 48' 28"



MSH-602

WELL LOG SUMMARY

FIELD: Cameron, W. Va. FARM: S. H. Mathews COUNTY: Marshall WELL NO: 4204

ORIGIN OF FORMATION DEPTHS Driller's Log Service Company Log Combination

FORMATION	TOP	BOTTOM	THICKNESS	REMARKS (Oil, Gas, Water encountered - Open Flows, Rock Pressures - Zones Perforated, Number of Shots per foot, etc.)
Pittsburgh Coal	792	798		
Big Dunkard	1300			
Salt Sand	1570	1600		
Salt Sand Gas	1580			
Morton Sand	1878	1910		
Big Lime	1920	1950		
Big Injun Sand	1950	2200		
Big Injun Gas in Top				
Fifty Foot Sand	2748	2773		
Gas in Top				
Gordon Stray	2810	2822		
Gordon Stray Gas	2813	2817		
Total Depth		2913		

Tasted 8/10 Mercury in 2" Before Shot
 Shot in Gordon Stray with 20 Quarts Glycerine
 260' of 5" Liner Run
 Perforated at Gordon Stray
 Perforated at Fifth Sand
 Casing Run 802' of 10"
 1320' of 8"
 1937' of 6"
 All 10" Pulled out
 Had 125,000 ft of Gas Before Gordon

Note: Well finished from Guy B. Patterson 5-4-53

MSH-602