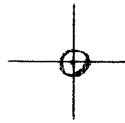


LATITUDE 39° 45' 00"



LONGITUDE 88° 42' 30"

7'5 OGIS topo location

7.5' loc 0.405 ✓ 15' loc \_\_\_\_\_  
                  0.95w (calc.) \_\_\_\_\_

Company \_\_\_\_\_

Farm \_\_\_\_\_

Quad WILEYVILLE 7 1/2'

County MARSHALL

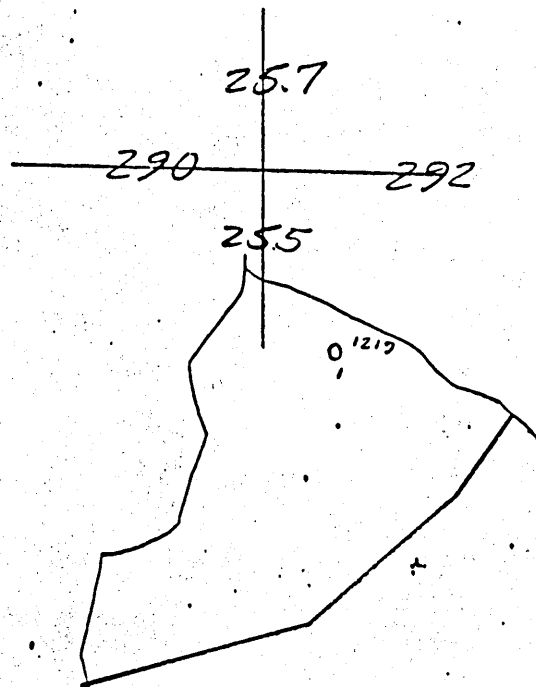
District MEADE

WELL LOCATION MAP

File No. 051-0592

(023)

COMPANY COLUMBIA GAS TRANSMISSION CORPORATION MAP NO. Wileyville  
FARM Amelia Estep et al. WELL NO. 601219  
DISTRICT Meade COUNTY Marshall STATE WV  
SCALE: 1" = 1320' LONG: 80° 43' 51" LAT. 39° 41' 45"



MSH-592

Division **W.R.G.Co.** Company \_\_\_\_\_  
 Record of well No. **2-1219** on **Adolph Frohnapple** Farm \_\_\_\_\_ Acres \_\_\_\_\_  
 Field **Meade** District **Marshall** County **W.Va.** State \_\_\_\_\_  
 Rig Commenced **19** Completed **19**  
 Drilling Commenced **5/17/1901** Completed **7/22/1901**  
 Contractor \_\_\_\_\_ Address \_\_\_\_\_  
 Driller Name \_\_\_\_\_

**CASING AND TUBING RECORD**

Conductor	12"	10"	8"	7"	6"	5 1/2"	4"	3"
Used in Dril.	291	1122	1645		2180			
Left in well	12	Pulled	Pulled	160	2180		2628	

**PACKER RECORD**

**SHOOTING RECORD**

Size	Depth Set	Type Packer	Date	Type Explosive	Amount	DEPTH		Volume Before Cu. Ft.	Volume After Cu. Ft.
						Top	Bottom		

**VOLUME AND PRESSURE**

Date	Reading in Inches	Liquid	Size Orifice	Volume	Sand	PRESSURE IN MIN.					24 Hour R. P.	Max. R. P.	Hours
						1	5	10	30	60			

**TOTAL INITIAL OPEN FLOW**

**CUBIC FEET PER 24 HOURS**

FORMATION	TOP	BOTTOM	THICKNESS	REMARKS
Mapletown Coal	726	731		No. of days using gas 57
Pittsburgh Coal	813	819		Anchor 60 ft from 1st packer
Little Dunkard	1295	1345	268 ft.	between 1st and 2nd packers
Big Dunkard	1370	1385		2 - 4x6 5/8 packers (new)
Big Salt Sand	1600	1640		2 - 4" Ludlow Gates new
Big Lime	1870	1930		1 - 4" Flange Tee new
Big Injun	1840	2170		1 set 4" Clamps new
Berea Grit	2539	2564		1 set Anchor Rods new
Red Rock	2638	2718		Total 142 joints tubing
Gordon Sand	2817			
Total Depth		2828		

**DRILLING DEEPER**

Commented to drill deeper	January 1, 1908	Completed February 2, 1908
Bayary Sand	3286	3298
Hard Shells	3485	3500
Total Depth		3701 1/2

3702  
2828  
87

12/31/11 Shot 2619 50 2834  
 Hole filled to 2881 and shot with 60 qts. Tubed with 2" tubing. Larkin Anchor packer set 324 ft. From bottom with two cages on 16 joints under packer. No of joints in well 141.

Turned in line February 16, 1912						
Pressure minutes	1	2	3	4	5	Rock

MSH-592