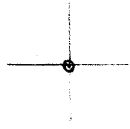


LATITUDE 39° 50' 00"

LONGITUDE 80° 32' 30"



7'5 OGIS topo location

7.5' loc 1.86S 15' loc _____
 1.79W (calc.) _____

Company _____

Farm _____

Quad CAMERON 7 1/2

County MARSHALL

District LIBERTY

WELL LOCATION MAP

File No. 051-591

COMPANY COLUMBIA GAS TRANSMISSION CORPORATION

MAP NO. C-1000

FARM R.F. Mathews

WELL NO. 60259

DISTRICT Liberty

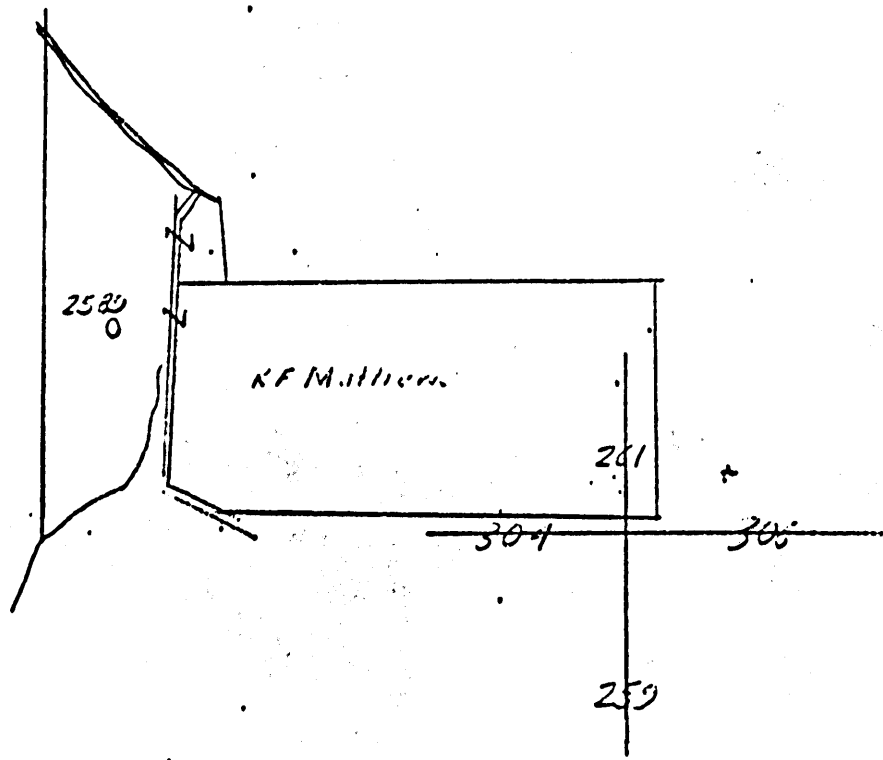
COUNTY Marshall

STATE WV

SCALE: 1" = 1320'

LONG. 80° 33' 51"

LAT. 39° 48' 16"



MSH-591

Company

348 Fourth Ave., Pittsburgh, Pa.

Division

Record of Well No. *2587* on *How. M. Adams et al Farm* Acres
Liberty Field *Liberty* District *Marshall* County *36.16* State
 Rig Commenced *Aug 26* 192*4*, Completed *Sept 2*, 192*4*
 Drilling Commenced *Sept 6* 192*4*, Completed *Oct 21*, 192*4*
 Cost per foot *\$2.25*, Contractor *Virginia and Richards* Address *Shoreway St 60*
 Drillers' Names *John Virginia, Hugo Virginia, Geo. Beard, Mount Woods*

BOILER			ENGINE			RIG			
H. P.	No.	Name of Maker	H. P.	No.	Name of Maker	New	Old	Height	Name of Builder
						Yes		<i>36100</i>	<i>J. L. ...</i>

CONDUCTOR AND CASING USED IN DRILLING

Conductor	13 inch	10 inch	8 1/2 inch	6 3/4 inch	6 inch	5 1/2 inch	5 inch	4 inch
<i>12</i>	<i>1</i>	<i>210</i>	<i>1270</i>	<i>1889</i>				

CONDUCTOR AND CASING LEFT IN WELL

Conductor	13 inch	10 inch	8 1/2 inch	6 3/4 inch	6 inch	5 1/2 inch	5 inch	4 inch	3 inch
<i>12</i>			<i>1270</i>	<i>1889</i>					

OIL WELL						GAS WELL				
When Shot	Size of Torpedo	1st Day's Production	Tubing	Rods	Tanks	Size of Packer	Depth Set	Packed with	1st Minutes Pressure	Rock Pressure
									<i>5</i>	<i>30</i>

FORMATION	Top		Bottom		Thickness	REMARKS
<i>White sand</i>	<i>760</i>	<i>768</i>				<i>Water at 135 3 barrels per hr.</i>
<i>White sand</i>	<i>475</i>	<i>1100</i>				<i>white hard</i>
<i>White sand</i>	<i>960</i>	<i>975</i>				<i>hard and at 1100</i>
<i>White sand</i>	<i>1165</i>	<i>1210</i>				<i>white soft</i>
<i>White sand</i>	<i>1400</i>	<i>1450</i>				<i>white hard</i>
<i>White sand</i>	<i>1550</i>	<i>1575</i>				<i>light hard</i>
<i>White sand</i>	<i>1700</i>	<i>1710</i>				<i>dark hard</i>
<i>White sand</i>	<i>1850</i>	<i>1860</i>				<i>white hard</i>
<i>White sand</i>	<i>1900</i>	<i>1910</i>				<i>dark hard</i>
<i>White sand</i>	<i>2000</i>	<i>2010</i>				<i>dark hard</i>
<i>White sand</i>	<i>2100</i>	<i>2110</i>				<i>dark hard</i>
<i>White sand</i>	<i>2200</i>	<i>2210</i>				<i>dark hard</i>
<i>White sand</i>	<i>2300</i>	<i>2310</i>				<i>dark hard</i>
<i>White sand</i>	<i>2400</i>	<i>2410</i>				<i>dark hard</i>
<i>White sand</i>	<i>2500</i>	<i>2510</i>				<i>dark hard</i>
<i>White sand</i>	<i>2600</i>	<i>2610</i>				<i>dark hard</i>
<i>White sand</i>	<i>2700</i>	<i>2710</i>				<i>dark hard</i>
<i>White sand</i>	<i>2800</i>	<i>2810</i>				<i>dark hard</i>
<i>White sand</i>	<i>2900</i>	<i>2910</i>				<i>dark hard</i>
<i>White sand</i>	<i>3000</i>	<i>3010</i>				<i>dark hard</i>
<i>White sand</i>	<i>3100</i>	<i>3110</i>				<i>dark hard</i>
<i>White sand</i>	<i>3200</i>	<i>3210</i>				<i>dark hard</i>
<i>White sand</i>	<i>3300</i>	<i>3310</i>				<i>dark hard</i>
<i>White sand</i>	<i>3400</i>	<i>3410</i>				<i>dark hard</i>
<i>White sand</i>	<i>3500</i>	<i>3510</i>				<i>dark hard</i>
<i>White sand</i>	<i>3600</i>	<i>3610</i>				<i>dark hard</i>
<i>White sand</i>	<i>3700</i>	<i>3710</i>				<i>dark hard</i>
<i>White sand</i>	<i>3800</i>	<i>3810</i>				<i>dark hard</i>
<i>White sand</i>	<i>3900</i>	<i>3910</i>				<i>dark hard</i>
<i>White sand</i>	<i>4000</i>	<i>4010</i>				<i>dark hard</i>
<i>White sand</i>	<i>4100</i>	<i>4110</i>				<i>dark hard</i>
<i>White sand</i>	<i>4200</i>	<i>4210</i>				<i>dark hard</i>
<i>White sand</i>	<i>4300</i>	<i>4310</i>				<i>dark hard</i>
<i>White sand</i>	<i>4400</i>	<i>4410</i>				<i>dark hard</i>
<i>White sand</i>	<i>4500</i>	<i>4510</i>				<i>dark hard</i>
<i>White sand</i>	<i>4600</i>	<i>4610</i>				<i>dark hard</i>
<i>White sand</i>	<i>4700</i>	<i>4710</i>				<i>dark hard</i>
<i>White sand</i>	<i>4800</i>	<i>4810</i>				<i>dark hard</i>
<i>White sand</i>	<i>4900</i>	<i>4910</i>				<i>dark hard</i>
<i>White sand</i>	<i>5000</i>	<i>5010</i>				<i>dark hard</i>
<i>White sand</i>	<i>5100</i>	<i>5110</i>				<i>dark hard</i>
<i>White sand</i>	<i>5200</i>	<i>5210</i>				<i>dark hard</i>
<i>White sand</i>	<i>5300</i>	<i>5310</i>				<i>dark hard</i>
<i>White sand</i>	<i>5400</i>	<i>5410</i>				<i>dark hard</i>
<i>White sand</i>	<i>5500</i>	<i>5510</i>				<i>dark hard</i>
<i>White sand</i>	<i>5600</i>	<i>5610</i>				<i>dark hard</i>
<i>White sand</i>	<i>5700</i>	<i>5710</i>				<i>dark hard</i>
<i>White sand</i>	<i>5800</i>	<i>5810</i>				<i>dark hard</i>
<i>White sand</i>	<i>5900</i>	<i>5910</i>				<i>dark hard</i>
<i>White sand</i>	<i>6000</i>	<i>6010</i>				<i>dark hard</i>
<i>White sand</i>	<i>6100</i>	<i>6110</i>				<i>dark hard</i>
<i>White sand</i>	<i>6200</i>	<i>6210</i>				<i>dark hard</i>
<i>White sand</i>	<i>6300</i>	<i>6310</i>				<i>dark hard</i>
<i>White sand</i>	<i>6400</i>	<i>6410</i>				<i>dark hard</i>
<i>White sand</i>	<i>6500</i>	<i>6510</i>				<i>dark hard</i>
<i>White sand</i>	<i>6600</i>	<i>6610</i>				<i>dark hard</i>
<i>White sand</i>	<i>6700</i>	<i>6710</i>				<i>dark hard</i>
<i>White sand</i>	<i>6800</i>	<i>6810</i>				<i>dark hard</i>
<i>White sand</i>	<i>6900</i>	<i>6910</i>				<i>dark hard</i>
<i>White sand</i>	<i>7000</i>	<i>7010</i>				<i>dark hard</i>
<i>White sand</i>	<i>7100</i>	<i>7110</i>				<i>dark hard</i>
<i>White sand</i>	<i>7200</i>	<i>7210</i>				<i>dark hard</i>
<i>White sand</i>	<i>7300</i>	<i>7310</i>				<i>dark hard</i>
<i>White sand</i>	<i>7400</i>	<i>7410</i>				<i>dark hard</i>
<i>White sand</i>	<i>7500</i>	<i>7510</i>				<i>dark hard</i>
<i>White sand</i>	<i>7600</i>	<i>7610</i>				<i>dark hard</i>
<i>White sand</i>	<i>7700</i>	<i>7710</i>				<i>dark hard</i>
<i>White sand</i>	<i>7800</i>	<i>7810</i>				<i>dark hard</i>
<i>White sand</i>	<i>7900</i>	<i>7910</i>				<i>dark hard</i>
<i>White sand</i>	<i>8000</i>	<i>8010</i>				<i>dark hard</i>
<i>White sand</i>	<i>8100</i>	<i>8110</i>				<i>dark hard</i>
<i>White sand</i>	<i>8200</i>	<i>8210</i>				<i>dark hard</i>
<i>White sand</i>	<i>8300</i>	<i>8310</i>				<i>dark hard</i>
<i>White sand</i>	<i>8400</i>	<i>8410</i>				<i>dark hard</i>
<i>White sand</i>	<i>8500</i>	<i>8510</i>				<i>dark hard</i>
<i>White sand</i>	<i>8600</i>	<i>8610</i>				<i>dark hard</i>
<i>White sand</i>	<i>8700</i>	<i>8710</i>				<i>dark hard</i>
<i>White sand</i>	<i>8800</i>	<i>8810</i>				<i>dark hard</i>
<i>White sand</i>	<i>8900</i>	<i>8910</i>				<i>dark hard</i>
<i>White sand</i>	<i>9000</i>	<i>9010</i>				<i>dark hard</i>
<i>White sand</i>	<i>9100</i>	<i>9110</i>				<i>dark hard</i>
<i>White sand</i>	<i>9200</i>	<i>9210</i>				<i>dark hard</i>
<i>White sand</i>	<i>9300</i>	<i>9310</i>				<i>dark hard</i>
<i>White sand</i>	<i>9400</i>	<i>9410</i>				<i>dark hard</i>
<i>White sand</i>	<i>9500</i>	<i>9510</i>				<i>dark hard</i>
<i>White sand</i>	<i>9600</i>	<i>9610</i>				<i>dark hard</i>
<i>White sand</i>	<i>9700</i>	<i>9710</i>				<i>dark hard</i>
<i>White sand</i>	<i>9800</i>	<i>9810</i>				<i>dark hard</i>
<i>White sand</i>	<i>9900</i>	<i>9910</i>				<i>dark hard</i>
<i>White sand</i>	<i>10000</i>	<i>10010</i>				<i>dark hard</i>

MSH-591

Division

Company

Record of Well No. 2599

on

Farm

Acres

Field

District Township

County

State

Rig Commenced

19

Completed

10

Drilling Commenced

19

Completed

10

Contractor

Address

Driller Name

CASING AND TUBING RECORD

	Conductor	18"	16"	8 1/2"	7"	6 1/2"	5 1/2"	4"	3"
Used in Drig.									
Left in Well									

PACKER RECORD

SHOOTING RECORD

Size	Depth Set	Type Packer	Date	Type Explosive	Amount	DEPTH		Volume Before Cu. Ft.	Volume After Cu.
						Top	Bottom		

VOLUME AND PRESSURE

Date	Reading in inches	Liquid	Size Orifice	Volume	Sand	PRESSURE IN MIN.					24 Hr. R. P.	Max. R. P.	
						1	5	10	20	60			

TOTAL INITIAL OPEN FLOW

CUBIC FEET PER 24 HOURS

FORMATION	TOP	BOTTOM	THICKNESS	REMARKS		
Shale brown soft	0	12	12	Lime dark hard	1015	1025
Lime white soft	12	40	28	Red Rock Red soft	1025	1060
Slate dark soft	40	60	20	Lime dark soft	1060	1110
Sand dark soft	60	100	40	Shale dark soft	1110	1125
Slate dark soft	100	135	35	Gray Rock gray soft	1125	1150
Lime white hard	135	175	40	Red Rock red soft	1150	1165
Slate dark soft	175	210	35	Slate dark soft	1210	1265
Lime dark hard	210	325	115	Slate white soft	1310	1360
Bluff Sand white soft	325	365	40	Coal black soft	1360	1365
Coal Black soft	365	368	3	Lime dark hard	1365	1375
Lime dark hard	368	420	52	Sand white hard	1375	1385
Native Coal black soft	420	425	5	Slate dark soft	1385	1400
Lime dark hard	425	440	15	Slate dark soft	1450	1475
Sand white hard	440	475	35	Sand white broken	1475	1480
Lime dark hard	480	670	90	Shale dark soft	1480	1520
Mapletown Coal black soft	670	675	5	Sand dark hard	1520	1540
Lime dark hard	675	690	15	Slate dark soft	1540	1555
Slate dark soft	690	755	65	Slate dark soft	1595	1640
Lime dark hard	755	760	5	Sand dark broken	1640	1690
Lime dark hard	768	835	67	Slate dark soft	1690	1700
Red rock red soft	835	840	5	Slate dark soft	1910	1830
Gritty Lime white hard	840	860	20	Lime dark hard	1830	1840
Slate dark soft	860	880	20	Slate dark soft	1840	1850
Red Rock Red Soft	880	915	35	Pencil cave dark soft	1861	1865
Sand light hard	915	950	35	Shells white broken	2170	2200
Red Rock red soft	950	960	10	Lime white broken	2200	2400
Gray Rock gray soft	975	990	15	Slate dark soft	2400	2450

Lime dark hard	2508	2570	62
Slate dark soft	2570	2590	20
Lime dark hard	2590	2600	10
Slate pink soft 2600	2600	2610	10
Lime dark hard	2610	2640	30
Slate dark soft 2640	2640	2660	20
Lime dark hard	2660	2685	25
Slate light soft	2685	2706	21
Lime light broken	2740	2770	30
Gordon Stray dark hard	2770	2782	12
Slate pink soft	2782	2784	2
Slate dark soft	2795	2810	15
Lime light broken	2810	2832	22
Slate light soft	2842	2870	28
Lime light hard	2870	2875	5
Slate dark soft	2875	2882	7
Slate dark soft	2890	2911	21

WELL RECORD

THE ... CO.

Well No. 2589

Farm ... Mathews

District L'berty

County Marshall

State W. Va.

Owned by

Division Cameron

Date October 2, 1920

Entered W. R. Book Folio

By