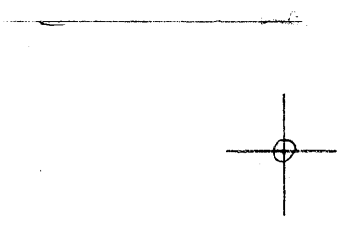


LATITUDE 39° 50' 00"

LONGITUDE 80° 20' 00"



7.5 OGIS topo location

7.5' loc 255S ✓ 15' loc _____
 1.95 w (calc.) _____

Company _____

Farm _____

Quad CAMERON 7 1/2'

County MARSHALL

District LIBERTY

WELL LOCATION MAP

File No. 851 - 588

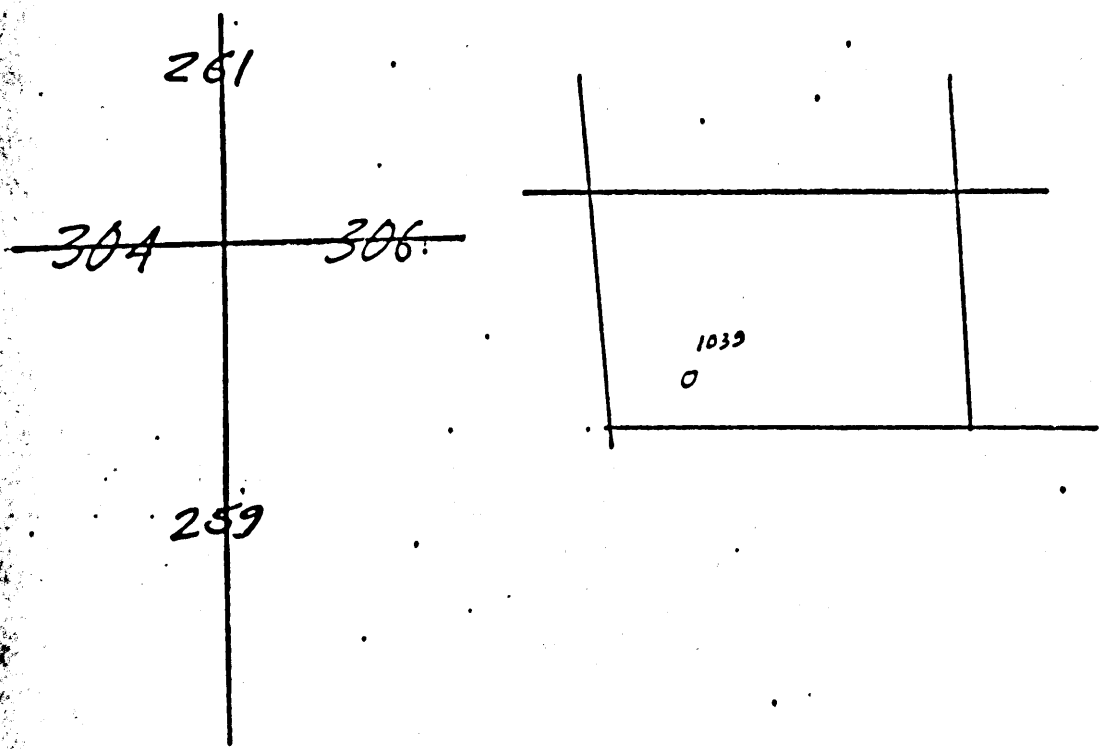
(024)

COMPANY COLUMBIA GAS TRANSMISSION CORPORATION MAP NO. Cameron

FARM O. E. Burge WELL NO. 601039

DISTRICT Liberty COUNTY Marshall STATE WV

SCALE: 1" = 1320' LONG. _____ LAT. _____



MSH-588

The Manufacturers Light and Heat Co.

Farmers Bank Building, Pittsburgh, Penna.

Division _____ **Record of Well No.** 1 1039 of *Jackson Wells* **Farm** _____ **Acres** _____
Location *Causton* **Field** *Liberty* **District** *Marshall* **County** *WVa* **State** _____
Rig commenced *Nov 8 1906* **Completed** *Nov 9 1906*
Drilling commenced *November 12 1906* **Completed** *December 28 1906*
Cost per foot _____ **Contractor** *J. M. Rowley* **Address** *Pellissippi Pa*
Drillers' names *George Day, Hugh Rogers, Harry Norman, Joe Kincaid*

BOILER			ENGINE			RIG			
N. P.	No.	Name of Maker	N. P.	No.	Name of Maker	New	Old	Height	Name of Builder
						<i>yes</i>		<i>82</i>	<i>S. H. Perini</i>

CONDUCTOR AND CASING USED IN DRILLING									
Conductor	13 inch	10 inch	8 1/2 inch	6 1/2 inch	6 inch	5 1/2 inch	5 3/16 inch	6 inch	4 inch
<i>11</i>		<i>715</i>	<i>1175</i>	<i>1944</i>					

CONDUCTOR AND CASING LEFT IN WELL									
Conductor	13 inch	10 inch	8 1/2 inch	6 1/2 inch	6 inch	5 1/2 inch	5 3/16 inch	6 inch	4 inch
<i>11</i>				<i>1944</i>					<i>2743 1/2</i>

OIL WELL				GAS WELL						
When Shot	Size of Torpedo	1st Day's Production	Tubing	Rods	Tanks	Size of Packer	Depth Set	Packed With	1st Minute's Pressure	Each Pressure
						<i>6 1/2 x 4</i>	<i>2663</i>	<i>4"</i>	<i>100</i>	<i>825</i>

FORMATION	Top		Bottom	Thickness	REMARKS
	Top	Bottom			
<i>Mapletrium local</i>	<i>670</i>				
<i>Pittsburg</i>	<i>778</i>	<i>776</i>			
<i>Big Drum and Sand</i>	<i>1050</i>	<i>1080</i>			
<i>Do Sand</i>	<i>1400</i>	<i>1458</i>			
<i>Salt</i>	<i>1570</i>	<i>1610</i>			
<i>" 2nd</i>	<i>1740</i>	<i>1790</i>			
<i>Maxon</i>	<i>1870</i>	<i>1860</i>			
<i>Truel car</i>	<i>1870</i>	<i>1880</i>			
<i>Big Lume</i>	<i>1890</i>	<i>1950</i>			
<i>Big Engine</i>	<i>1950</i>	<i>2175</i>			
<i>Fifty foot</i>	<i>2640</i>	<i>2670</i>			
<i>Arday</i>	<i>2752</i>	<i>2770</i>			
<i>Gordon</i>	<i>2818</i>	<i>2845</i>			
<i>Fourth</i>	<i>2886</i>				
<i>Total Depth</i>	<i>2897</i>				

Gas at 2754 ft
" " 2890 "
234 7/8 feet of anchor (11 joints)
125 joints above packer
other 6 1/2 x 4 Brown packer used