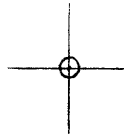


LATITUDE 39° 50' 00"

LONGITUDE 80° 30' 00"



7'5 OGIS topo location

7.5' loc 1.955 ✓ 15' loc \_\_\_\_\_  
                  1.26W (calc.) \_\_\_\_\_

Company \_\_\_\_\_

Farm \_\_\_\_\_

Quad CAMERON 7 1/2'

County MARSHALL

District LIBERTY

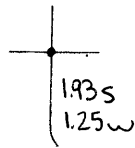
WELL LOCATION MAP

File No. 051-1585

(024)

Latitude

Longitude



**Topo Location**

7.5' Loc. \_\_\_\_\_ 15' Loc. \_\_\_\_\_  
 \_\_\_\_\_ (calc.) \_\_\_\_\_

**Company** Manufact L&H

**Farm** Mary F. Cantwright 2875

**15' Quad** \_\_\_\_\_  
(sec.)

**7.5' Quad** Cameron

**District** Liberty

**WELL LOCATION PLAT**

**County** OSI **Permit** 70032

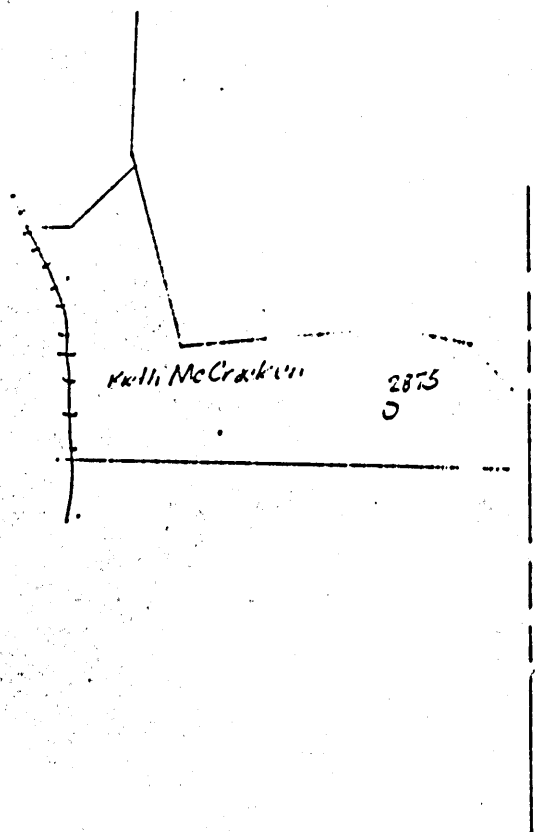
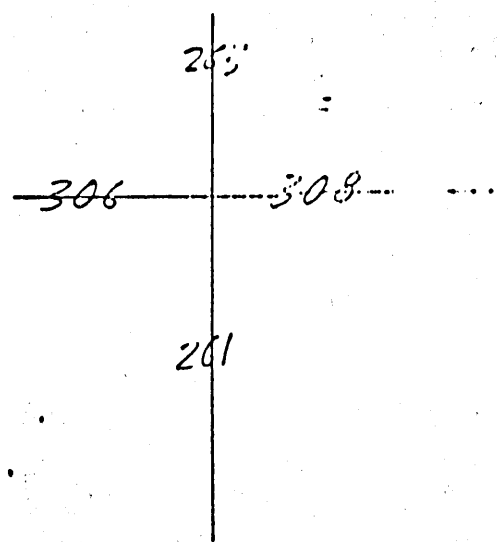
585?

COMPANY COLUMBIA GAS TRANSMISSION CORPORATION MAP NO. 1111

FARM Kelli McCracken WELL NO. 60293

DISTRICT Liberty COUNTY Marshall STATE WV

SCALE: 1" = 1320' LONG. 80°31'25" LAT. 39°48'24"



MSH-585

Cameron Company  
 248 Fourth Ave., Pittsburgh, Pa.  
 Record of Well No. 2675 on Lary E. Courtwright Farm 94 Acres  
 Cameron Field Liberty District Marshall County W. Va. State  
 Rig Commenced October 24th, 1923, Completed October 30th, 1923  
 Drilling Commenced November 12th, 1923, Completed December 15th, 1923  
 Cost per Foot \$1.90 Contractor L. L. Windom Address Cameron, W. Va.  
 Drillers' Names Joe Poorman, Forest Bush, Wm. Carpenter & E. D. Moose.

BOILER			ENGINE			RIG		
H. P.	No.	Name of Maker	H. P.	No.	Name of Maker	New	Old	Name of Builder
						X		Richardson Kuhn

CONDUCTOR AND CASING USED IN DRILLING									
Conductor	12 inch	10 inch	8 1/2 inch	6 1/2 inch	4 1/2 inch	3 1/2 inch	2 1/2 inch	1 1/2 inch	1 inch
12"		204	1443' 6"	2181					

CONDUCTOR AND CASING LEFT IN WELL									
Conductor	12 inch	10 inch	8 1/2 inch	6 1/2 inch	4 1/2 inch	3 1/2 inch	2 1/2 inch	1 1/2 inch	1 inch
16'		2228'	1443' 0"	2181'					3003' 4"

OIL WELL					GAS WELL					
When Shot	Size of Torpedo	1st Day's Production	Tubing	Muds	Tanks	Size of Packer	Depth Set	Packed with	1st Minute Pressure	Mud Pressure
						4" X	2958'	Anchor		

FORMATION	Top	Bottom	Thickness	REMARKS
Native Coal	95	97	2	black soft
Waynesburg Coal	656	660	4	black soft
Sand	695	715	20	white hard
Lupletown Coal	915	920	5	black soft
Pittsburgh Coal	1025	1032	7	black soft
Sand	1155	1172	17	white hard
Little Dunkard	1400	1415	15	dark hard
Big Dunkard	1515	1540	25	dark hard
Gas Sand	1700	1730	30	light hard
1st Salt Sand	1790	1810	20	light hard
2nd Salt Sand	1835	1930	95	light hard
Laxom Sand	2068	2092	24	white hard
Pencil Cave	2163	2173	10	dark shelly
Big Lime	2173	2197	24	yellow hard
Big Injun	2197	2460	263	
Ereca Grit	2600	2660	60	white close
Thirty-foot	2603	2620	17	white hard
Fifty-foot	2963			Gas @ 2984 to 2994'
Total Depth		3000		
Slate dark soft	1930	1970	40	Thirty ft. shells, dark hard   2820   2880   40
Lime dark hard	1970	2010	40	
Slate white soft	2010	2030	20	
Lime white hard	2030	2068	38	
Slate dark soft	2093	2095	2	
Little Lime white hard	2095	2110	15	
Slate & Shells dark	2160	2600	140	
Slate & Shells dark cl	2600	2750	150	
30 ft. shells dark hard	2750	2803	53	

Examined above information and measurements and found to be correct by  
 L. L. Windom Contractor  
 Examined and approved by  
 M. J. Cummings Superintendent of Co.  
 NOTE: - The above blank must be filled out carefully by the Contractor, with a complete and accurate record of the Well, and accompany, when presented for payment the bill for drilling.  
 All formations and known sands must be given by their proper name, with steel line measurements, and under the head of "Remarks" must be recorded in what sand and at what depth Oil, Gas or Water was found, the quantity of same, the quality of the sand, and thickness of pay.  
 Make no memoranda of boiler and engine if owned by contractor.

MSH-585

Liberty District, Marshall County, W. Va.  
 By The Manufacturers Light & Heat Co.  
 Commenced Nov. 12, 1923; completed, Dec. 15, 1923.  
 No. 2400 in Gas Report.

	Top.	Bottom.
Native coal	95	97
Waynesburg Coal	6561	6501
Sand	695	715
Mapletown (Sewickley) Coal	915	920
Pittsburgh Coal	1025	1035
Sand	1155	1172
Little Dunkard Sand	1400	1425
Big Dunkard Sand	1515	1540
Gas Sand	1700	1730
1st Salt Sand	1790	1810
2nd Salt Sand	1835	1930
Maxton Sand	2068	2092
Pencil Cove	2163	2173
Big Lime	2173	2197
Big Injun Sand	2197	2460
Berea Grit	2600	2660
30-Ft. Sand	2803	2820
50-Ft. Sand (gas at 2984-2994')	2983	
Total depth		3000