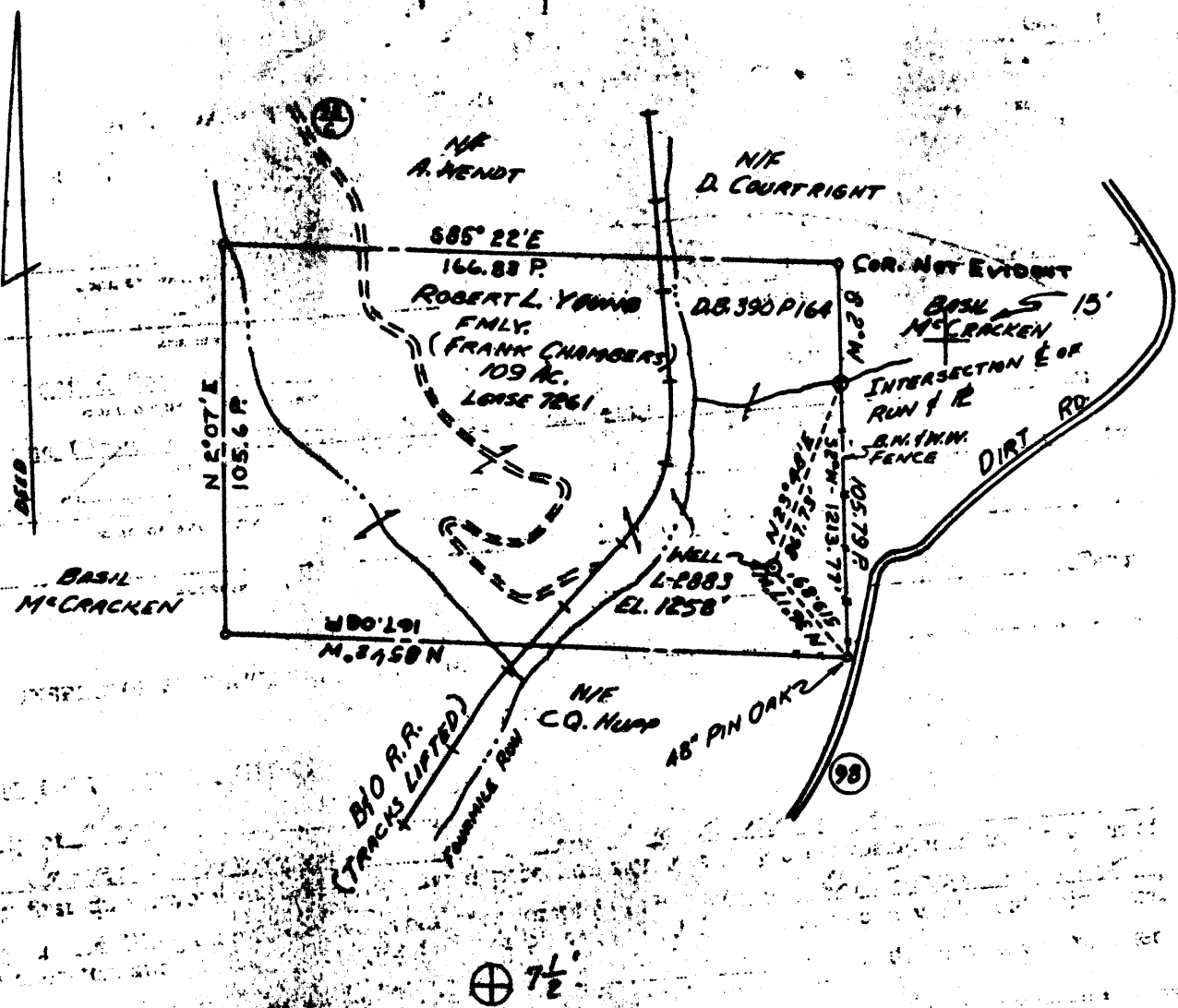


Latitude 39° 50' 00"

840'



Longitude 80° 30' 00"

1180'

17942

B.M. ELEV 1205.16 - U.S.G. / D.S. BRASS DISC.
 STAMPED #22 - 1935
 ON WEST WIND WALL OF SOUTH
 END OF BIO R.R. WELLING
 TUNNEL.

"I, the undersigned, hereby certify that this map is correct to the best of my knowledge and belief and shows all the information required by the rules and regulations of the oil and gas section of the mining laws of WEST VIRGINIA. Minimum degree of accuracy is one part in 2500.

- New Location
- Storage
- Drill Deeper
- Abandonment
- Re-Drill/Fracture

5/5/77
 MAP O-25-25
 F.B. 1261-N P. 23

Signed Robert C. Floyd
 SURVEYOR E1351-E (PA.)

Company COLUMBIA GAS TRANSMISSION CORP.
 Address P.O. Box 1273 CHARLESTON, W.VA. 25325
 Farm ROBERT L. YOUNG
 Lease 7261 Acres 109
 Well Farm No. 1 Ser. No. L-2883
 Elevation - Spirit Level 1258
 Quadrangle GAMERON, W.Va. 7 1/2'
 Township or District LIBERTY
 County MARSHALL
 Sec., Lot, Or. _____ R _____
 Coordinates LAT. 39° 48' 00" LONG. 80° 31' 50"
 File No. _____ Dwg. No. _____
 Date 3/18/77 Scale 1" = 400'

STATE OF WEST VIRGINIA
 DEPARTMENT OF MINES
 OIL AND GAS DIVISION
 WELL LOCATION MAP

(+) Denotes Values Of Well On United States Topographic Maps

API Well 47-051-0580-P

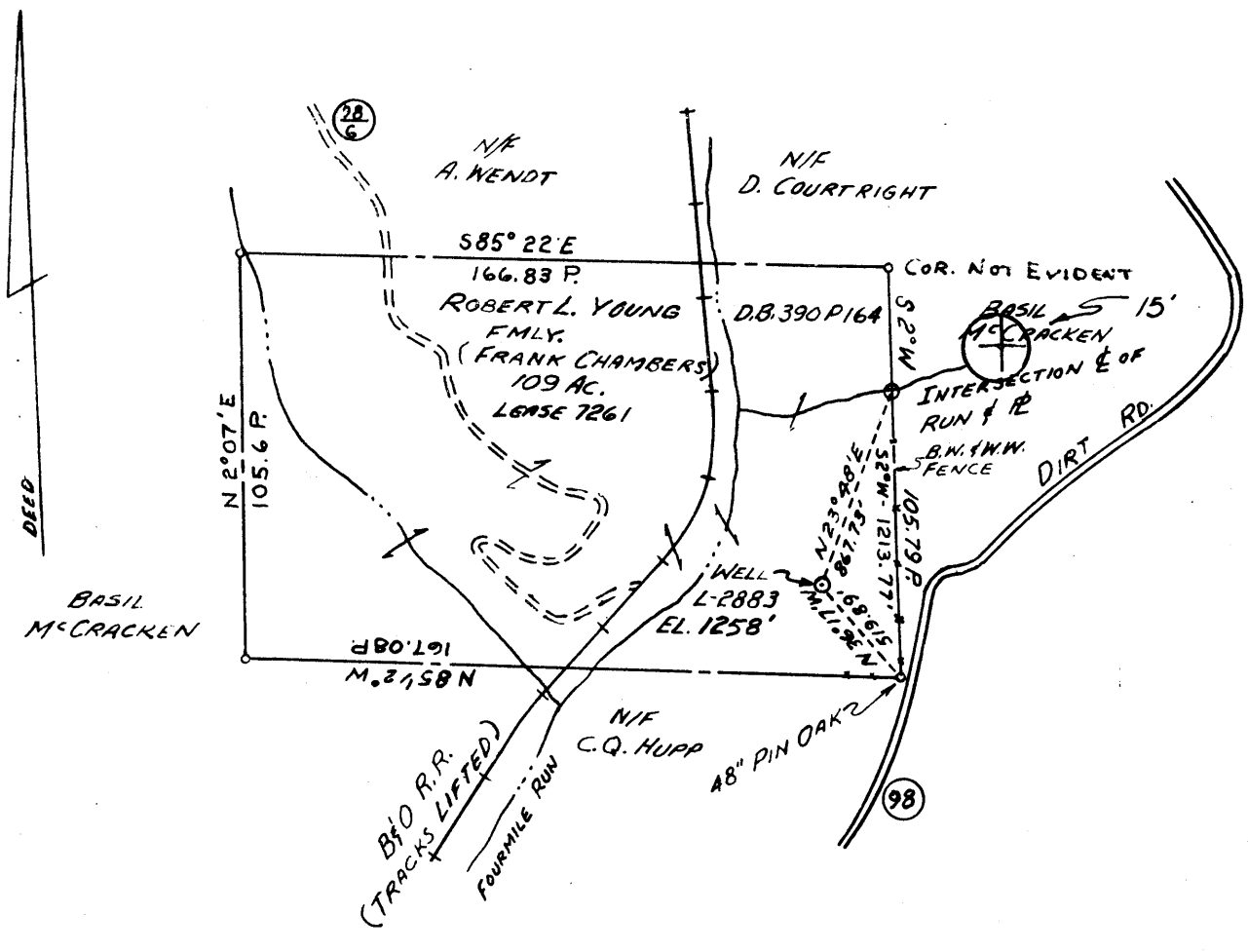
Scale 15' 7 1/2'

NOT: 051-508-A

47-051

Latitude 39° 50' 00"

Longitude 80° 30' 00"



⊕ 7 1/2'
2.26S
1.62W

15'
2.28S
1.73W

B.M. ELEV. 1209.16 - U.S.C. & G.S. BRASS DISC.
STAMPED K-22 - 1935
ON WEST WING WALL OF SOUTH
END OF B&O R.R. WELLING
TUNNEL.

I, the undersigned, hereby certify that this map is correct to the best of my knowledge and belief and shows all the information required by the rules and regulations of the oil and gas section of the mining laws of WEST VIRGINIA.
Minimum degree of accuracy is one part in 2500

New Location
 Storage
 Drill Deeper
 Abandonment
 Re-Drill/Fracture

5/5/77
Map 7-25-25
F.B. 1261-N P. 23

Signed Robert C. Floyd
SURVEYOR 21351-E (PA.)

Company COLUMBIA GAS TRANSMISSION CORP
Address P.O. BOX 1273 CHARLESTON, W. VA. 25325
Farm ROBERT L. YOUNG
Lease 7261 Acres 109
Well Farm No. 1 Ser. No. L-2883
Elevation - Spirit Level 1258
Quadrangle 15 CAMERON, W. VA. 7 1/2' SE
Township or District LIBERTY
County MARSHALL
Sec., Lot, Qr. _____ T _____ R _____
Coordinates LAT. 39° 48' 02" LONG. 80° 31' 50"
File No. _____ Dwg. No. _____
Date 3/18/77 Scale 1" = 800'

STATE OF WEST VIRGINIA
DEPARTMENT OF MINES
OIL AND GAS DIVISION
WELL LOCATION MAP

Now 051 - 580

(+) Denotes Values Of Well On United States Topographic Maps

MARS-508-A

Scale 15' 7 1/2'

47-051

MAY 18 1977

(Computer Numbers for Wells Drilled Prior to 1929)

TABLE NO. 5

PERMITS TO DRILL AND WELLS COMPLETED 19 78

COUNTY MARSHALL (47-051)

SUPPLEMENT SHEET

PERMIT NUMBER	WELL OPERATOR FARM AND WELL NUMBER	PERMIT NUMBER	WELL OPERATOR FARM AND WELL NUMBER
051-0576	Columbia Gas Transmission Corporation Mary E. Cozart Agent # 1272	051-0588	Columbia Gas Transmission Corporation O. E. Burge # 1039
051-0577	Columbia Gas Transmission Corporation Edwin Monroe Agent # 2956	051-0589	Columbia Gas Transmission Corporation O. E. Burge etal. # 2465
051-0578	Columbia Gas Transmission Corporation Emerald Coal Company # 0991	051-0590	Columbia Gas Transmission Corporation R.C. Isminger etal. # 2160
051-0579	Columbia Gas Transmission Corporation First National Bank # 1550	051-0591	Columbia Gas Transmission Corporation R. E. Mathews # 2589
051-0580	Columbia Gas Transmission Corporation George W. Henderson # 2883	051-0592	Columbia Gas Transmission Corporation Amelia Estep, etal. # 1219
051-0581	Columbia Gas Transmission Corporation Harry A. Wendt, etal. # 2059	051-0593	Columbia Gas Transmission Corporation David Dowdell etal. # 1227
051-0582	Columbia Gas Transmission Corporation James Kinsey Agent # 2881	051-0594	Columbia Gas Transmission Corporation David E. Crow # 1221
051-0583	Columbia Gas Transmission Corporation John E. Burley Etal. # 1975	051-0595	Columbia Gas Transmission Corporation Nora M. Alley etal. # 1226
051-0584	Columbia Gas Transmission Corporation K. E. Courtwright etal. # 1786	051-0596	Carnegie Natural Gas Company W. G. McClumphy # 129
051-0585	Columbia Gas Transmission Corporation Keith A. McCrackin # 2875	051-0597	Carnegie Natural Gas Company D. L. McGinnis # 155
051-0586	Columbia Gas Transmission Corporation Lola M. Heft, etal. # 3020	051-0598	Perkins Oil & Gas Company J. Bredding Heirs # 1
051-0587	Columbia Gas Transmission Corporation Lou Tasker etal # 3223	051-0599	Pennzoll Company J.C. McIlvain # 5