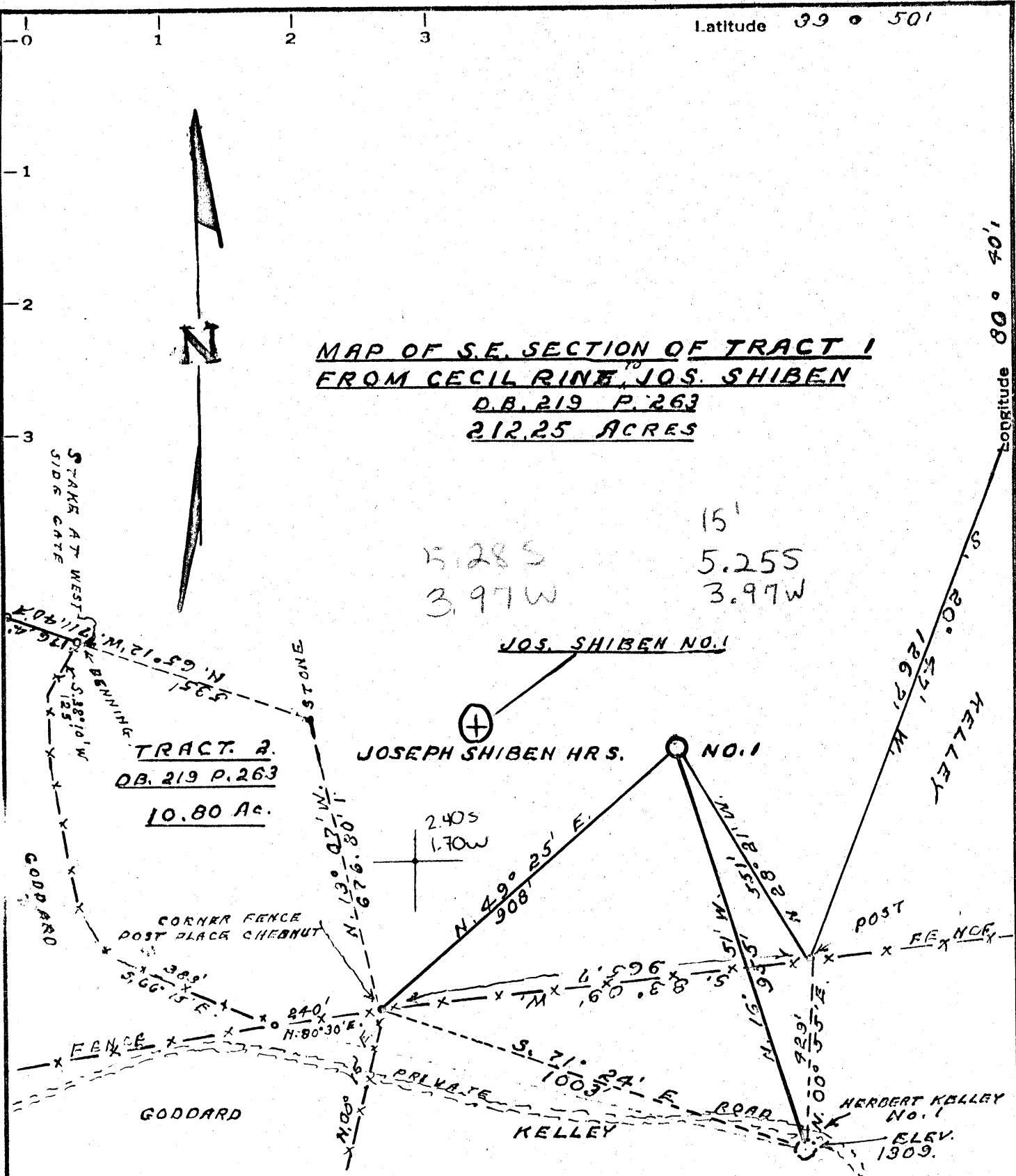


**MAP OF S.E. SECTION OF TRACT 1
FROM CECIL RINE TO JOS. SHIBEN
D.B. 219 P. 263
212.25 ACRES**



MINIMUM ERROR OF CLOSURE 1:2000

SOURCE OF ELEVATION ELEVATION FROM HERBERT KELLEY #1

ELEVATION BY SPIRIT LEVEL OCT. - 29 - 1963

Drill Deeper
Abandonment
Issued 4-7-69

"I, THE UNDERSIGNED, HEREBY CERTIFY THAT THIS MAP IS CORRECT TO THE BEST OF MY KNOWLEDGE AND BELIEF AND SHOWS ALL THE INFORMATION REQUIRED BY PARAGRAPH 6 OF THE RULES AND REGULATIONS OF THE OIL AND GAS SECTION OF THE MINING LAWS OF WEST VIRGINIA."

Company W.D. Webb & Son, Inc. Petroleum Co.
 P.O. Box 3045, Salt Lake City, Utah, 84110
 Address 225 S. BARRINGTON AVE. LOS ANGELES, CALIF.

Farm JOSEPH SHIBEN HRS.

Tract 1 Acres 212.25 Lease No. _____

Well (Farm) No. 1 Serial No. _____

Elevation (Spirit Level) 1381

Quadrangle CAMERON SW

County MARSHALL District FRANKLIN

Engineer Gordon W. Simmons
GORDON W. SIMMONS

Engineer's Registration No. 509

File No. _____ Drawing No. _____

Date AUG-8-1966 Scale 1" = 300'

STATE OF WEST VIRGINIA
DEPARTMENT OF MINES
OIL AND GAS DIVISION
CHARLESTON

WELL LOCATION MAP

FILE NO. MARS-531-P

+ Denotes location of well on United States Topographic Maps, scale 1 to 62,500, latitude and longitude lines being represented by border lines as shown.

-- Denotes one inch spaces on border line of original tracing.



STATE OF WEST VIRGINIA
DEPARTMENT OF MINES
OIL AND GAS DIVISION 3

Rotary
Spudder
Cable Tools
Storage

Quadrangle Cameron
Permit No. Mars - 531

WELL RECORD

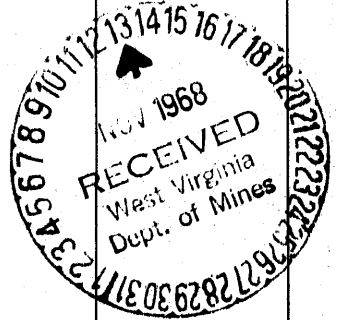
Oil or Gas Well Dry (KIND)

| | | | | | | |
|---|---|-----------------|-------------------|------------------|--------------|-------------------|
| Company | Palisades Petroleum Co. | | Casing and Tubing | Used in Drilling | Left in Well | Packers |
| Address | 825 S. Barrington Ave., Los Angeles, Calif. | | Size | | | |
| Farm | Ethel Rine | Acres 212 | 16 | | | Kind of Packer |
| Location (waters) | Whetstone | | 13 | | | |
| Well No. | 1 | Elev. 1381 | 10 | 373 | 0 | Size of |
| District | Franklin | County Marshall | 8 1/4 | 1394 | to be pulled | Depth set |
| The surface of tract is owned in fee by | Mrs Ethel Rine | | 6% | 1820 | 915 | |
| Address | Proctor, W. Va. | | 5 3/16 | | | |
| Mineral rights are owned by | Joseph Shiben Estate | | 4 1/2 | 2104 | 400' | |
| Address | New Martinsville, W. Va. | | 3 | | | Perf. top 1983 |
| Drilling commenced | Sept 6, 1966 | | 2 | | | Perf. bottom 1993 |
| Drilling completed | Oct 10, 1966 | | Liners Used | | | |
| Date Shot | From | To | | | | |
| With | | | | | | |

Open Flow /10ths Water in _____ Inch
 /10ths Merc. in _____ Inch
 Volume Show Cu. Ft.
 Rock Pressure _____ lbs. _____ hrs.
 Oil _____ bbls., 1st 24 hrs.
 WELL ACIDIZED (DETAILS) _____
 WELL FRACTURED (DETAILS) 7/29/68 345 bbls water, 500 gal 15% acid 6000# 20-40 sd

RESULT AFTER TREATMENT (Initial open Flow or bbls.) No results
 ROCK PRESSURE AFTER TREATMENT _____ HOURS
 Fresh Water 110' Feet Salt Water 1720 Feet
 Producing Sand _____ Depth _____

| Formation | Color | Hard or Soft | Top | Bottom | Oil, Gas or Water | Depth | Remarks |
|------------------------|----------|--------------|------|--------|-------------------|-------|---------|
| Sand | Brown | Soft | 0 | 50 | | | |
| Red Rock | | Soft | 50 | 55 | | | |
| Slate | Gray | Soft | 55 | 60 | | | |
| Red Rock | | Soft | 60 | 85 | | | |
| Sand & Slate | Gray | Soft | 85 | 130 | Water | 110 | |
| Lime | Gray | Hard | 130 | 160 | | | |
| Slate | Gray | Hard | 160 | 175 | | | |
| Red Rock | | Hard | 175 | 185 | | | |
| Slate | Gray | Hard | 185 | 200 | | | |
| Lime | Gray | Hard | 200 | 250 | | | |
| Red Rock & Limestone | Gray | Hard | 250 | 300 | | | |
| Slate, Lime & RR | | Hard | 300 | 395 | | | |
| Sand | Gray | Hard | 395 | 430 | | | |
| Slate & Lime | Gray | Hard | 430 | 440 | | | |
| Shale | Red-gray | Soft | 440 | 450 | | | |
| Slate & shells | Gray | Soft | 450 | 640 | | | |
| Sand | Gray | Hard | 640 | 655 | | | |
| Lime & slate | Gray | Hard | 655 | 730 | | | |
| Red Rock | | Soft | 730 | 752 | | | |
| Slate & shells gray | | Hard | 752 | 885 | | | |
| Black slate (coal) | | Hard | 885 | 890 | | | |
| Lime & slate | Gray | Hard | 890 | 974 | | | |
| Black slate (coal) Pbg | | Hard | 974 | 984 | | | |
| Slate | Gray | Hard | 984 | 1087 | | | |
| Red Rock | | Soft | 1087 | 1125 | | | |
| Slate & shells (limy) | Gray | Hard | 1125 | 1186 | | | |



| Formation | Color | Hard or Soft | Top 3 | Bottom | Oil, Gas or Water | Depth Found | Remarks |
|---------------|-------|--------------|-------|--------|-------------------|-------------|---------|
| ed Rock | | Soft | 1186 | 1204 | | | |
| late | Gray | Hard | 1204 | 1270 | | | |
| ed Rock | | Hard | 1270 | 1304 | | | |
| late | Gray | Hard | 1304 | 1374 | | | |
| ed Rock | | Hard | 1374 | 1386 | | | |
| late & shells | Gray | Hard | 1386 | 1540 | | | |
| ime | White | Hard | 1540 | 1570 | | | |
| and | Gray | Hard | 1570 | 1585 | | | |
| late & shells | Black | Hard | 1585 | 1715 | | | |
| and | Gray | Hard | 1715 | 1745 | Water | 1720-30 | |
| ime | Gray | Hard | 1745 | 1770 | | | |
| and | Gray | Hard | 1770 | 1810 | | | |
| ime | Gray | Hard | 1810 | 1840 | | | |
| late & shells | Gray | Hard | 1840 | 1919 | | | |
| and | White | Hard | 1919 | 2005 | Sho Gas | 1966-80 | |
| late | Gray | Soft | 2005 | 2010 | | | |
| ime | Gray | Hard | 2010 | 2020 | | | |
| and | Gray | Hard | 2020 | 2035 | Sho Gas | 2031-34 | |
| ime (Big) | Gray | Hard | 2035 | 2110 | | | |
| and (Brkn) | Gray | Hard | 2110 | 2335 | | | |
| Big Injun | | | TD | 2335 | | | |
| | | | PB | 2104 | | | |

2035
1381

654

Date October 18, 19 66

APPROVED Palisades Petroleum Co. Owner

By _____
(Title)
Consulting Geologist