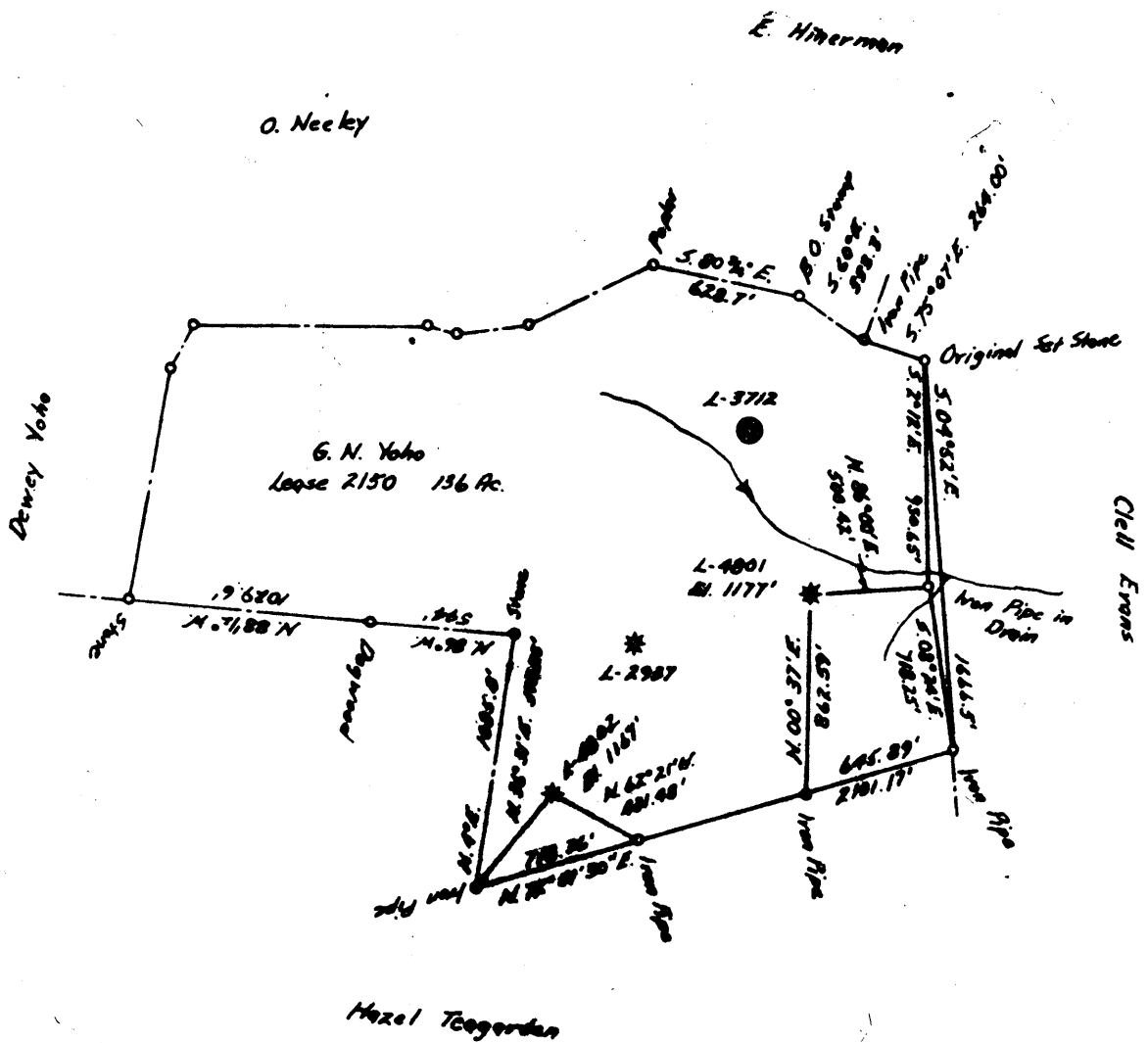
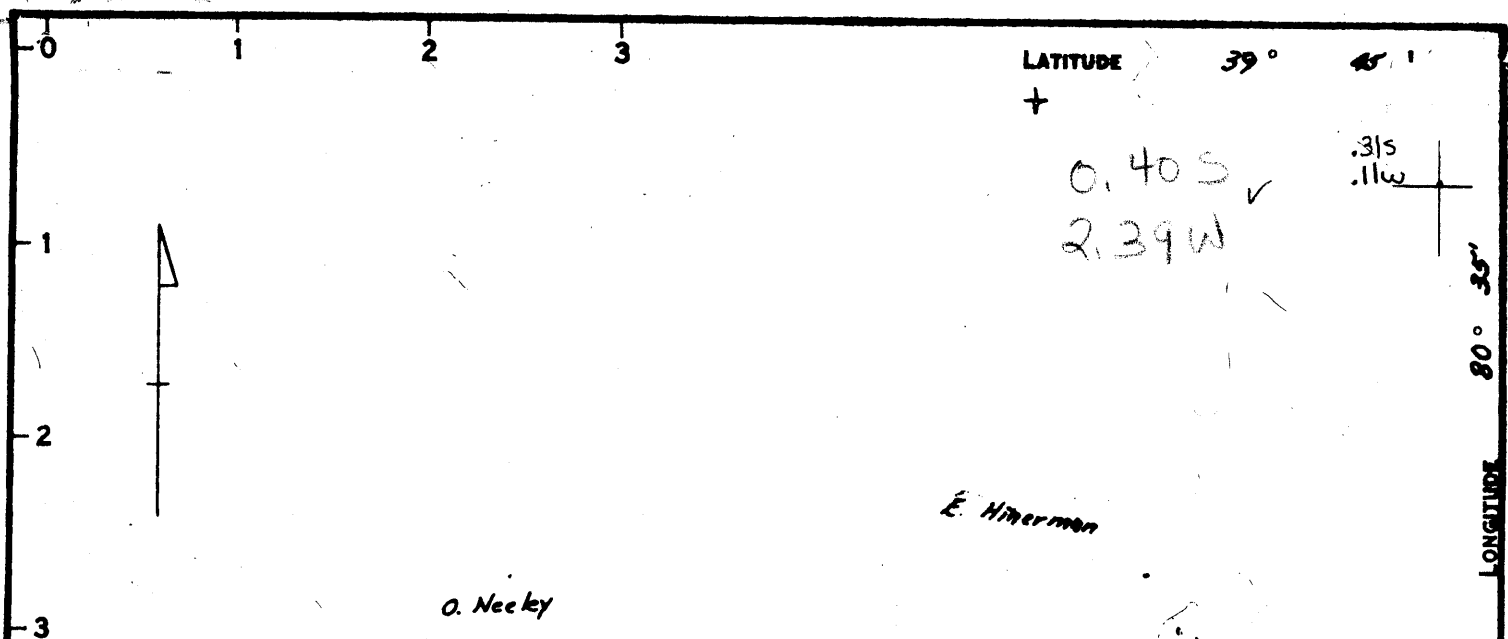


39° 45' 00"



COAL OWNED BY M. A. Hanna Coal Company

- NEW LOCATION Storage
- RECONDITION
- DRILL DEEPER
- ABANDONMENT

"I, the undersigned, hereby certify that this map is correct to the best of my knowledge and belief and shows all the information required by paragraph 6 of the rules and regulations of the oil and gas section of the mining laws of West Virginia."  
 Minimum degree of accuracy is one part in 200

Signed Robert M. Hall (JE)

COMPANY	<u>The Manufacturers Light And Heat Company</u>		
ADDRESS	<u>800 Union Trust Bldg. Pittsburgh, Penna.</u>		
FARM	<u>G. N. Yoho</u>		
MAP	<u>P-2513</u>	ACRES	<u>136</u>
WELL (FARM) NO.	<u>3</u>	SERIAL NO.	<u>L-4001</u>
ELEVATION (SPIRIT LEVEL)	<u>1177'</u>		
QUADRANGLE	<u>Littleton</u>	DISTRICT	<u>NC</u>
COUNTY	<u>Marshall</u>	DISTRICT	<u>Liberty</u>
POINT OF PROVEN ELEVATION	<u>U.S.G.S. B.M. B-127</u>		
FILE NO.	<u>Y-25-772</u>		
DATE	<u>June 10, 1963</u>	SCALE	<u>1" = 800'</u>

STATE OF WEST VIRGINIA  
 DEPARTMENT OF MINES  
 OIL AND GAS DIVISION  
 CHARLESTON  
 WELL LOCATION MAP  
 FILE NO. MARS-510

+ DENOTES LOCATION OF WELL ON UNITED STATES TOPOGRAPHIC MAPS, SCALE 1 TO 62,500. LATITUDE AND LONGITUDE LINES BEING REPRESENTED BY BORDER LINES AS SHOWN.  
 - DENOTES ONE INCH SPACES ON BORDER LINE OF ORIGINAL TRACINGS.



STATE OF WEST VIRGINIA  
DEPARTMENT OF MINES  
OIL AND GAS DIVISION

Quadrangle Littleton

WELL RECORD

*Storage*

Permit No. MARS-510

Oil or Gas Well GAS  
(KIND)

Company The Mfrs. Lt. and Ht. Co.  
Address 800 Union Trust Bldg., Pittsburgh 19, Pa.  
Farm George N. Yoho Acres 136  
Location (waters) \_\_\_\_\_  
Well No. 4801 Elev. 1177.00'  
District Liberty County Marshall  
The surface of tract is owned in fee by \_\_\_\_\_  
Address \_\_\_\_\_  
Mineral rights are owned by \_\_\_\_\_  
Address \_\_\_\_\_  
Drilling commenced July 21, 1963  
Drilling completed August 1, 1963  
Date Shot 8/1/63 From Maxton Sand  
With Pitot Tube  
Open Flow 7.6 /10ths Water in \_\_\_\_\_ Inch  
4 1/2 /10ths Merc. in \_\_\_\_\_ Inch  
Volume 5,314,000 Cu. Ft.  
Rock Pressure 553 lbs. 48 hrs.  
Oil \_\_\_\_\_ bbls., 1st 24 hrs.  
Fresh water \_\_\_\_\_ feet  
Salt water \_\_\_\_\_ feet

Casing and Tubing	Used in Drilling	Left in Well	Packers
Size			
16			Kind of Packer
18 3/8"	31'	31'	
10			Size of
8 5/8"	942'	942'	
6"			Depth set
5 1/2"	2259'	2259'	
8			Perf. top
8			Perf. bottom
Liners Used			Perf. top
			Perf. bottom

CASING CEMENTED \_\_\_\_\_ SIZE \_\_\_\_\_ No. Ft. \_\_\_\_\_ Date \_\_\_\_\_  
COAL WAS ENCOUNTERED AT 848 FEET \_\_\_\_\_ INCHES  
\_\_\_\_\_ FEET \_\_\_\_\_ INCHES FEET \_\_\_\_\_ INCHES  
\_\_\_\_\_ FEET \_\_\_\_\_ INCHES FEET \_\_\_\_\_ INCHES

Formation	Color	THICKNESS	Top	Bottom	Oil, Gas or Water	Depth Found	Remarks
✓ Pittsburgh Coal		10	848	858			
✓ Big Dunkard		64	1346	1410			
✓ 1st Salt Sand		19	1512	1531			
✓ 3rd Salt Sand		19	1772	1791			
✓ Maxton Sand		25	1862	1887			
✓ Lower Maxton		18	1952	1970			
✓ Big Lime		28 4/2	1973	2015			
✓ Big Injun Sand			2018				
Total Depth				2238			
5 1/2" Float Shoe set at				2259'			
5 1/2" Insert Check Valve set at				2249'			

