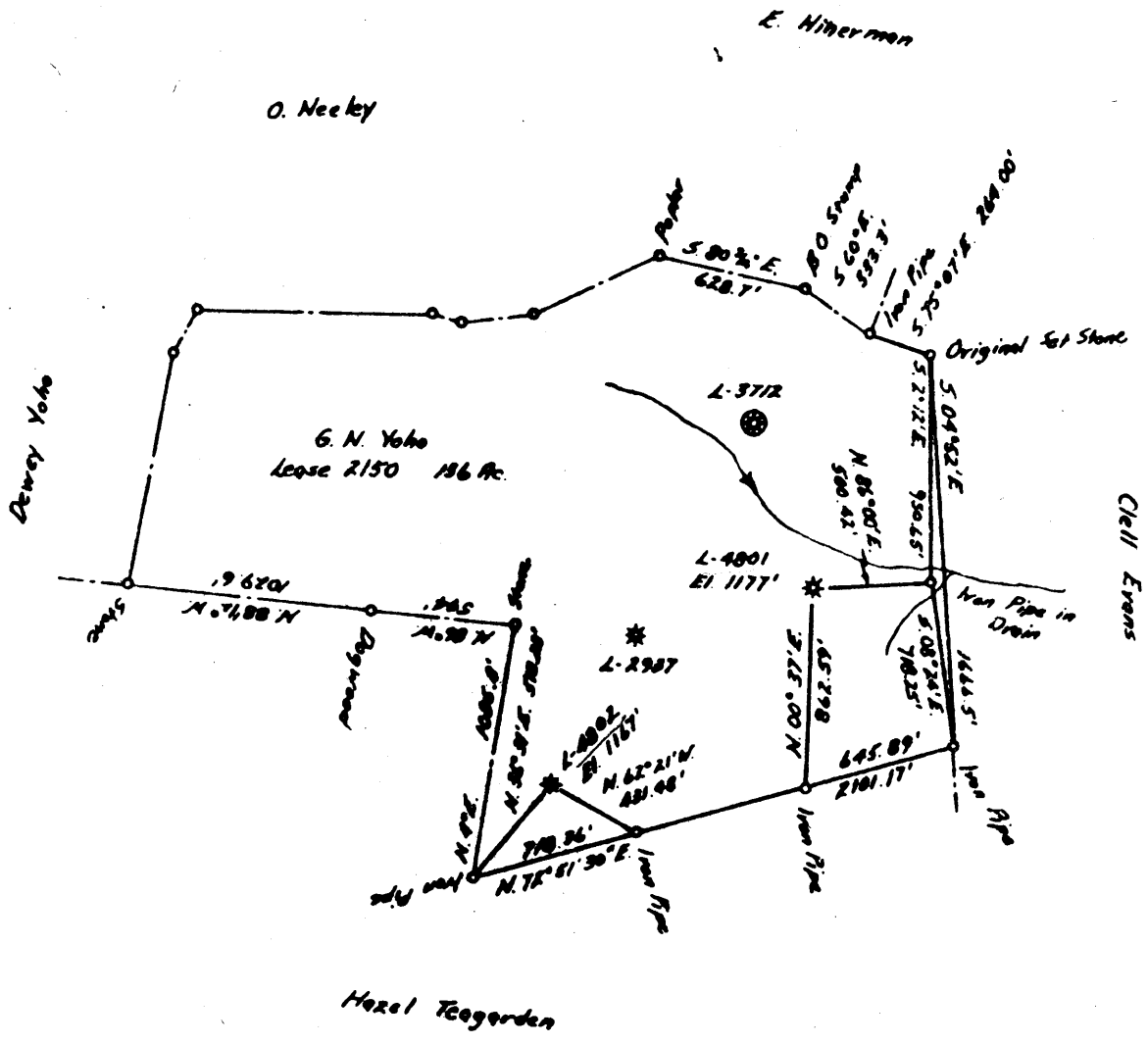


0.60 S ✓
2.56 W | .53 S
36w



COAL OWNED BY M. A. Hanna Coal Company

- NEW LOCATION Storage
- RECONDITION
- DRILL DEEPER
- ABANDONMENT

"I, the undersigned, hereby certify that this map is correct to the best of my knowledge and belief and shows all the information required by paragraph 6 of the rules and regulations of the oil and gas section of the mining laws of West Virginia."
Minimum degree of accuracy is one part in 200

Signed Robert M. Heill (JF)

COMPANY The Manufacturers Light And Heat Co.
 ADDRESS 800 Union Trust Bldg. Pittsburgh, Penna.
 FARM G. N. Yoho
 MAP P-25/3 ACRES 136 LEASE NO. 2150
 WELL (FARM) NO. 4 SERIAL NO. L-4002
 ELEVATION (SPIRIT LEVEL) 1167'
 QUADRANGLE Littleton 15' NC
 COUNTY Marshall DISTRICT Liberty
 POINT OF PROVEN ELEVATION U.S.G.S. B.M. B-127
 FILE NO. Y-25-773
 DATE June 10, 1963 SCALE 1" = 800'

STATE OF WEST VIRGINIA
 DEPARTMENT OF MINES
 OIL AND GAS DIVISION
 CHARLESTON
 WELL LOCATION MAP
 FILE NO. MARS-509

+ DENOTES LOCATION OF WELL ON UNITED STATES TOPOGRAPHIC MAPS. SCALE 1 TO 62,500. LATITUDE AND LONGITUDE LINES BEING REPRESENTED BY BORDER LINES AS SHOWN.
 - DENOTES ONE INCH SPACES ON BORDER LINE OF ORIGINAL TRACING.



STATE OF WEST VIRGINIA
DEPARTMENT OF MINES
OIL AND GAS DIVISION

Quadrangle Littleton

WELL RECORD

Storage

Permit No. MARS-509

Oil or Gas Well GAS

Company The Mfrs. Lt. and Ht. Co.
Address 800 Union Trust Bldg., Pittsburgh 19, Pa.
Farm George N. Yoho Acres 136
Location (waters) _____
Well No. 4802 Elev. 1167.00'
District Liberty County Marshall
The surface of tract is owned in fee by _____
Address _____
Mineral rights are owned by _____
Address _____
Drilling commenced July 11, 1963
Drilling completed July 22, 1963
Date Shot 7/22/63 From Maxton To Big Injun
With Pitot Tube
Open Flow 10ths Water in 4 1/2 Inch
3.6 /10ths Merc. in _____ Inch
Volume 3,650,000 Cu. Ft.
Rock Pressure 568 lbs. 48 hrs.
Oil _____ bbls., 1st 24 hrs.
Fresh water _____ feet _____ feet
Salt water _____ feet _____ feet

Casing and Tubing	Used in Drilling	Left in Well	Packers
Size			
16			Kind of Packer
18 3/8"	30'	30'	
10			Size of
8 5/8"	913'	913'	
6 3/4"			Depth set
5 1/2"	2236'	2236'	
4			Perf. top
3			Perf. bottom
Liners Used			Perf. top
			Perf. bottom

CASING CEMENTED. _____ SIZE _____ No. Ft. _____ Date _____
COAL WAS ENCOUNTERED AT 860 FEET _____ INCHES
_____ FEET _____ INCHES FEET _____ INCHES
_____ FEET _____ INCHES FEET _____ INCHES

Formation	Color	THICKNESS	Top	Bottom	Oil, Gas or Water	Depth Found	Remarks
Pittsburgh Coal			860	867			
Big Dunkard Sand			1360	1434			
First Salt Sand			1520	1560	Perforated	1864 to 1890	
Maxton Sand			1864	1890			
Big Lime Sand			1954	2002			
Big Injun Sand			2004		Perforated	2022' to 2028'	
					Perforated	2088' to 2098'	
					Perforated	2102' to 2110'	
Total Depth				2210			
5 1/2" Float Shoe			1954	2236			
5 1/2" Insert/Valve			1167	2226			
			787				

