



West Virginia Department of Environmental Protection  
Office of Oil and Gas  
**WELL LOCATION FORM: GPS**

API: 47-051-0508 WELL NO.: Pats Well #1-R

FARM NAME: Eagle Natrium, LLC/ Axiall Corporation

RESPONSIBLE PARTY NAME: Eagle Natrium, LLC/ Axiall Corporation

COUNTY: Marshall DISTRICT: Franklin

QUADRANGLE: New Martinsville

SURFACE OWNER: Eagle Natrium, LLC/ Axiall Corporation

ROYALTY OWNER: Eagle Natrium, LLC/ Axiall Corporaton

UTM GPS NORTHING: 4,398,051.16

UTM GPS EASTING: 513,815.49 GPS ELEVATION: 631 ft.

The Responsible Party named above has chosen to submit GPS coordinates in lieu of preparing a new well location plat for a plugging permit or assigned API number on the above well. The Office of Oil and Gas will not accept GPS coordinates that do not meet the following requirements:

1. Datum: NAD 1983, Zone: 17 North, Coordinate Units: meters, Altitude: height above mean sea level (MSL) – meters.
2. Accuracy to Datum – 3.05 meters
3. Data Collection Method:

Survey grade GPS     : Post Processed Differential       
Real-Time Differential     

Mapping Grade GPS  X : Post Processed Differential       
Real-Time Differential     

4. **Letter size copy of the topography map showing the well location.**

I the undersigned, hereby certify this data is correct to the best of my knowledge and belief and shows all the information required by law and the regulations issued and prescribed by the Office of Oil and Gas.

Signature *[Handwritten Signature]*  
6/2/14 Date

\_\_\_\_\_  
Manager, Environmental Control  
Title



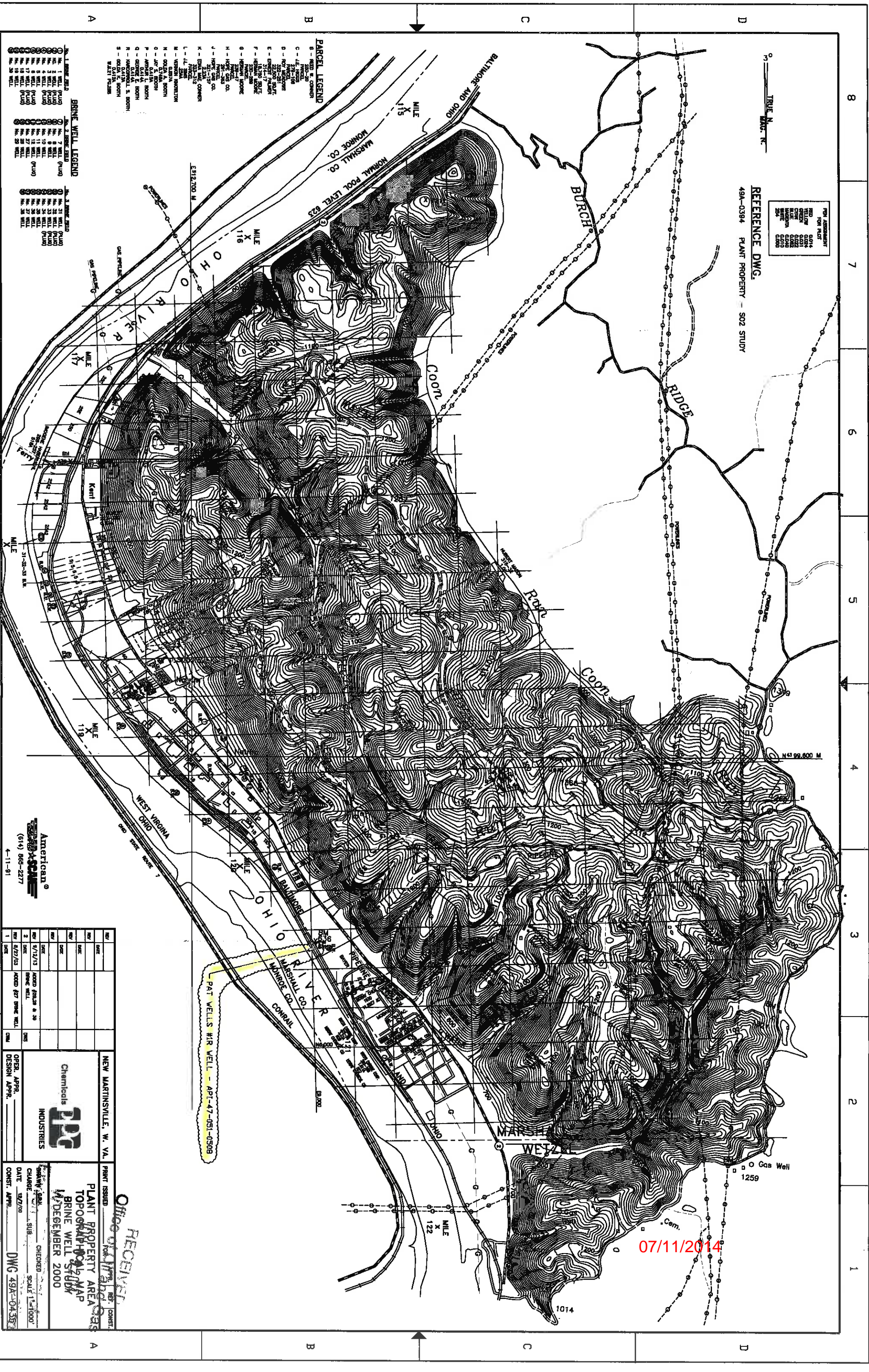
5106508P

FOR ASSURANCE

RED	BOUNDARY
YELLOW	EXISTING
GREEN	PROPOSED
BLUE	WATER
BROWN	TOPOGRAPHY
BLACK	OTHER

REFERENCE DWG.  
49A-0394 PLANT PROPERTY - S02 STUDY

TRUE N. N.



- PARCEL LEGEND**
- A - 111.000 AC.
  - B - 111.000 AC.
  - C - 111.000 AC.
  - D - 111.000 AC.
  - E - 111.000 AC.
  - F - 111.000 AC.
  - G - 111.000 AC.
  - H - 111.000 AC.
  - I - 111.000 AC.
  - J - 111.000 AC.
  - K - 111.000 AC.
  - L - 111.000 AC.
  - M - 111.000 AC.
  - N - 111.000 AC.
  - O - 111.000 AC.
  - P - 111.000 AC.
  - Q - 111.000 AC.
  - R - 111.000 AC.
  - S - 111.000 AC.

- BRINE WELL LEGEND**
- 1 - 111.000 AC.
  - 2 - 111.000 AC.
  - 3 - 111.000 AC.
  - 4 - 111.000 AC.
  - 5 - 111.000 AC.
  - 6 - 111.000 AC.
  - 7 - 111.000 AC.
  - 8 - 111.000 AC.
  - 9 - 111.000 AC.
  - 10 - 111.000 AC.
  - 11 - 111.000 AC.
  - 12 - 111.000 AC.
  - 13 - 111.000 AC.
  - 14 - 111.000 AC.
  - 15 - 111.000 AC.
  - 16 - 111.000 AC.
  - 17 - 111.000 AC.
  - 18 - 111.000 AC.
  - 19 - 111.000 AC.
  - 20 - 111.000 AC.
  - 21 - 111.000 AC.
  - 22 - 111.000 AC.
  - 23 - 111.000 AC.
  - 24 - 111.000 AC.
  - 25 - 111.000 AC.
  - 26 - 111.000 AC.
  - 27 - 111.000 AC.
  - 28 - 111.000 AC.
  - 29 - 111.000 AC.

**American**  
SCIENCE  
(514) 866-2277  
4-11-91

NO.	DATE	DESCRIPTION	BY	CHKD.
1	07/11/13	ADDED 877 BRINE WELL		
2	07/11/13	ADDED 877 BRINE WELL		
3	07/11/13	ADDED 877 BRINE WELL		

**Chemicals**  
**PPG**  
**INDUSTRIES**

NEW MARTINSVILLE, W. VA.  
PRINT ISSUED  
PLANT PROPERTY AREA  
TOPOGRAPHIC MAP  
BRINE WELL STUDY  
NOVEMBER 2000

RECEIVED  
Office of Planning  
and Development

07/11/2014