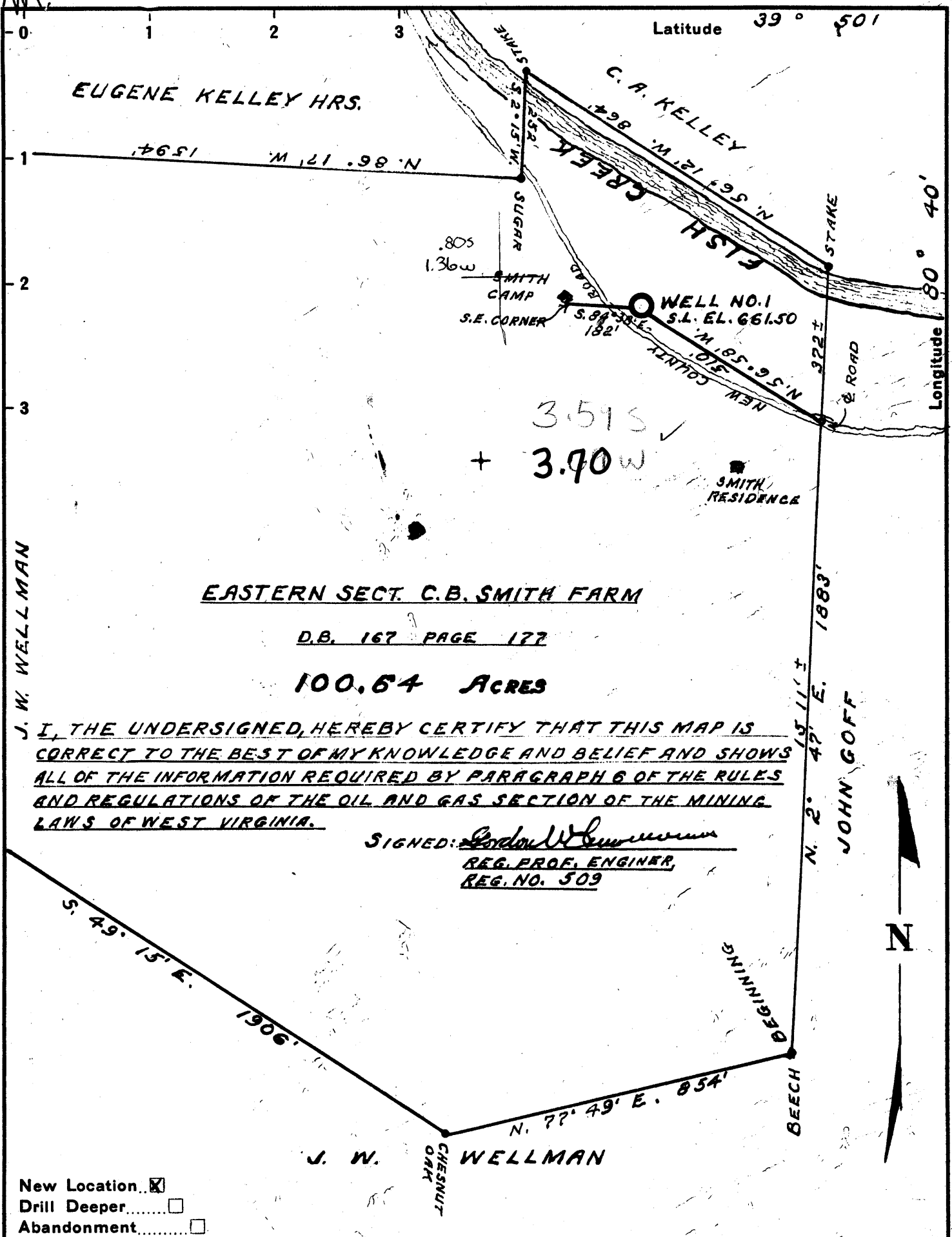


39°47'30"

80°42'30"



**EASTERN SECT. C.B. SMITH FARM**

**D.B. 167 PAGE 177**

**100.64 ACRES**

I, THE UNDERSIGNED, HEREBY CERTIFY THAT THIS MAP IS CORRECT TO THE BEST OF MY KNOWLEDGE AND BELIEF AND SHOWS ALL OF THE INFORMATION REQUIRED BY PARAGRAPH 6 OF THE RULES AND REGULATIONS OF THE OIL AND GAS SECTION OF THE MINING LAWS OF WEST VIRGINIA.

SIGNED: Gordon W. Sammons  
REG. PROF. ENGINEER  
REG. NO. 509

- New Location...
- Drill Deeper.....
- Abandonment.....

Company MORRIS FRUCHTMAN, ET AL.  
 Address 805 CHICAGO ST. - TOLEDO, OHIO.  
 Farm C. B. SMITH, ET AL.  
 Tract \_\_\_\_\_ Acres 100.64 Lease No. \_\_\_\_\_  
 Well (Farm) No. 1 Serial No. \_\_\_\_\_  
 Elevation (Spirit Level) 661.50  
 Quadrangle CAMERON SW  
 County MARSHALL District MEADE  
 Engineer Gordon W. Sammons  
GORDON W. SAMMONS  
 Engineer's Registration No. 509  
 File No. \_\_\_\_\_ Drawing No. \_\_\_\_\_  
 Date MAY 22-1963 Scale 1" = 300'

STATE OF WEST VIRGINIA  
DEPARTMENT OF MINES  
OIL AND GAS DIVISION  
CHARLESTON

**WELL LOCATION MAP**  
FILE NO. MARS-505

+ Denotes location of well on United States Topographic Maps, scale 1 to 62,500, latitude and longitude lines being represented by border lines as shown.  
- Denotes one inch spaces on border line of original tracing.



STATE OF WEST VIRGINIA  
DEPARTMENT OF MINES  
OIL AND GAS DIVISION 31

Rotary   
Spudder   
Cable Tools   
Storage

Quadrangle Cameron

WELL RECORD

Permit No. Mars-505

Oil or Gas Well Dry  
(KIND)

Company Morris Fruchtman, Et Al  
Address 805 Chicago Street, Toledo, Ohio  
Farm C. B. Smith, Et Al Acres 100.64  
Location (waters) \_\_\_\_\_  
Well No. 1 (one) Elev. 661.50  
District Meade County Marshall  
The surface of tract is owned in fee by \_\_\_\_\_  
Address \_\_\_\_\_  
Mineral rights are owned by C. B. Smith, R.D. #1,  
Glen Easton, W. Va. Address \_\_\_\_\_  
Drilling commenced June 10, 1963  
Drilling completed July 17, 1963  
Date Shot \_\_\_\_\_ From \_\_\_\_\_ To \_\_\_\_\_  
With \_\_\_\_\_  
Open Flow \_\_\_\_\_ /10ths Water in \_\_\_\_\_ Inch  
\_\_\_\_\_ /10ths Merc. in \_\_\_\_\_ Inch  
Volume 16 MCF Cu. Ft.  
Rock Pressure 415 lbs. 40 hrs.  
Oil \_\_\_\_\_ bbls., 1st 24 hrs.  
WELL ACIDIZED \_\_\_\_\_

Casing and Tubing	Used in Drilling	Left in Well	Packers
Size			Kind of Packer
16			
13	40'	0	
10	361'	0	Size of
8 1/4	1073'	140'	
6 5/8			Depth set
5 3/16 4 1/2"	1348'	228'	
3			Perf. top
2			Perf. bottom
Liners Used			Perf. top
			Perf. bottom

CASING CEMENTED 4 1/2" SIZE 228 No. Ft 7/23/63 Date

COAL WAS ENCOUNTERED AT 223-226 FEET 310-317 INCHES  
\_\_\_\_ FEET \_\_\_\_\_ INCHES \_\_\_\_\_ FEET \_\_\_\_\_ INCHES  
\_\_\_\_ FEET \_\_\_\_\_ INCHES \_\_\_\_\_ FEET \_\_\_\_\_ INCHES

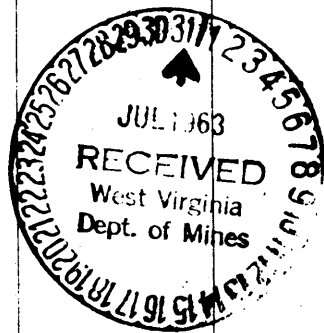
WELL FRACTURED 7/28/63 315 lbs. H2O 3000# sands

RESULT AFTER TREATMENT no increase

ROCK PRESSURE AFTER TREATMENT \_\_\_\_\_

Fresh Water \_\_\_\_\_ Feet Salt Water \_\_\_\_\_ Feet

Formation	Color	Hard or Soft	Top	Bottom	Oil, Gas or Water	Depth	Remarks
Clay			0	10			
Gravel			10	39			
Slate & Shale			39	114			
Limestone			114	133			
Slate & Shale			133	180	Water	180'	2 1/2 bailers/hr.
Limestone			180	218	Gas	188'	
Slate			218	228			
Limestone			228	260			
Shale & Shells			260	279			
Limestone			279	310			
Coal Pkg			310	317			
Limestone			317	325			
Shale			325	360			
Limestone			360	367			
Shale			367	420			
Red Rock			420	470			
Shale			470	490			
Red Rock			490	510			
Limestone			510	525			
Red Rock			525	530			
Shale & Shells			530	572			
Red Rock			572	587			
Shale			587	600			
Red Rock			600	610			
Limestone			610	624			
Shale			624	672			



Formation	Color	Hard or Soft	Top	Bottom	Oil, Gas or Water	Depth Found	Remarks
✓ Sandstone		31	672	690	Gas	672-675'	300 MCF
Red Rock			690	722			
Shale & Shells			722	815			
Limestone			815	856			
Shale			856	861			
Limestone & Shale			861	880			
Sandstone			880	898		1358	1410
Shale			898	932		662	662
Sandstone			932	954		696	748
Slate & Shale			954	994			
Limestone			994	1033			
✓ Sandstone			1033	1056	Water	1042-52'	
Shale			1056	1070			
Sand			1070	1095			
Shale			1095	1118			
✓ Sandstone			1118	1165			
Shale			1165	1205			
Sandstone			1205	1222			
Shale			1222	1235			
Sandstone			1235	1325	Gas	1310-15'	100 MCF
Sandy Shale			1325	1345			
Limestone			1345	1350			
Sandy Shale			1350	1358			
✓ Big Lime			1358	1410			
✓ Sandstone			1410	1440	Show Oil	1430'	
Sandstone (broken)			1440	1445	Show gas	1470-80'	12 35
Sandstone			1445	1475			662
Sandstone (broken)			1475	1504			573
Sandstone			1504	1537			
Sandstone			1537	1610			
Sand & Shale			1610	1622			
Sand			1622	1670			
Shale			1670	1838			
Slate & Shells			1838	1845			
Shale & Shells			1845	2030			
Sandstone			2030	2040			
Shale			2040	2102			
Pink Rock			2102	2170			
Slate & Shale			2170	2272			
Sand			2272	2284			
Shale			2284	2306			
Sand			2306	2328			
Shale			2328	2372			
Lime			2372	2383			
Sand & Shale			2383	2444			
Total Depth				2444			
Plugged back to				1350			

Date July 30, 19 63

APPROVED Morris Fruchtman, Et Al, Owner

By Joseph H. McCoy (Title)