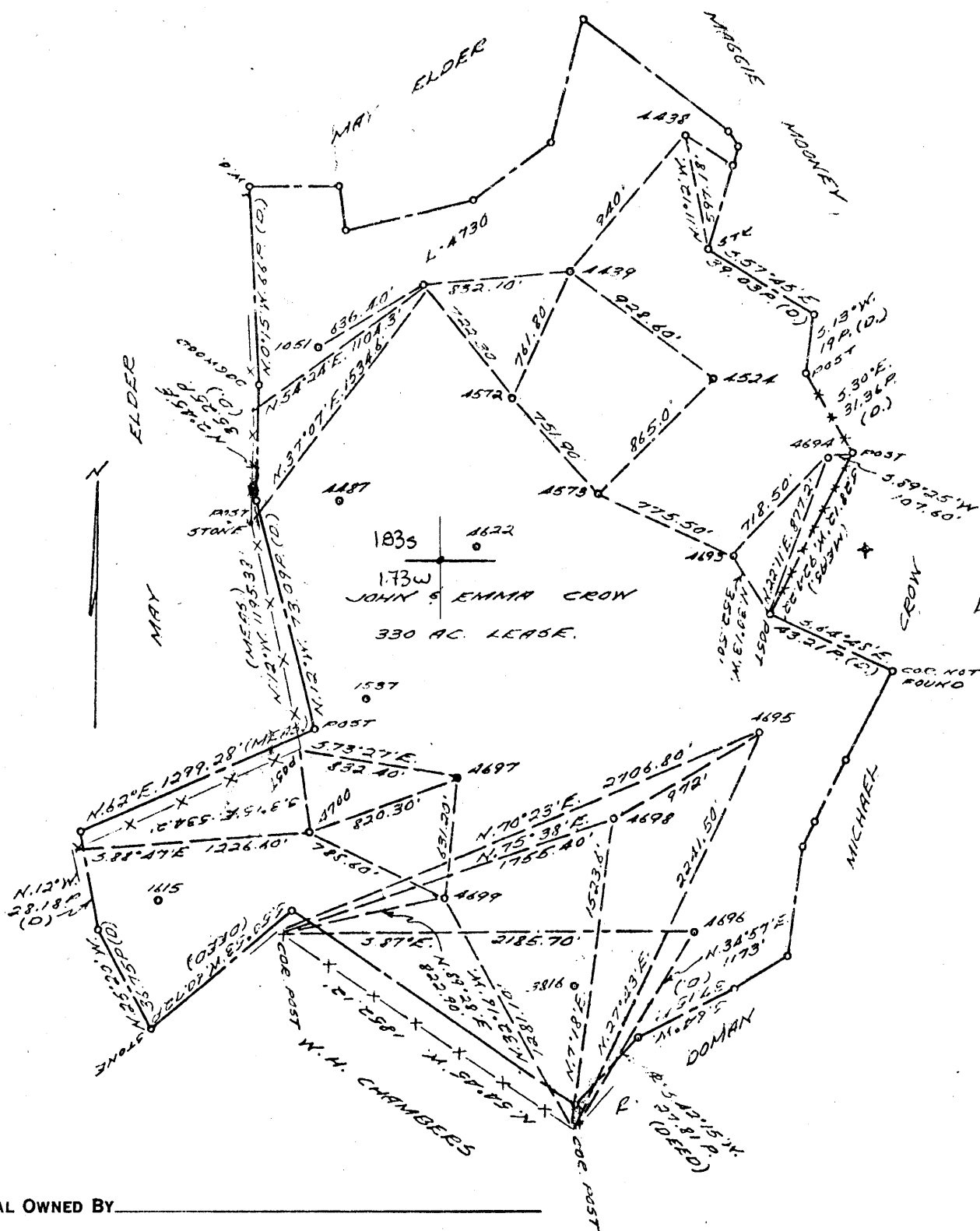


LATITUDE 40 ° 00

39°57'30"

LONGITUDE 80 ° 30'



COAL OWNED BY \_\_\_\_\_

NEW LOCATION...  FOR STORAGE

DRILL DEEPER...

ABANDONMENT...

0-25-10

COMPANY THE MANUFACTURERS LIGHT & HEAT

ADDRESS 800 UNION TRUST BLDG., PCH. PA.

FARM JOHN AND EMMA CROW

TRACT \_\_\_\_\_ ACRES 330 LEASE No. 2900

WELL (FARM) No. 15 SERIAL No. 4697

ELEVATION (SPIRIT LEVEL) 1192.75'

QUADRANGLE CAMERON NE

COUNTY MARSHALL DISTRICT WEBSTER

ENGINEER John A. London (O.G.)

ENGINEERS REGISTRATION No. 12710

FILE No. \_\_\_\_\_ DRAWING No. V-25-575

DATE 20 JUNE 62 SCALE 1" = 800'

STATE OF WEST VIRGINIA  
DEPARTMENT OF MINES  
OIL AND GAS DIVISION  
CHARLESTON

### WELL LOCATION MAP

FILE No. MARS-476

+ DENOTES LOCATION OF WELL ON UNITED STATES TOPOGRAPHIC MAPS, SCALE 1 TO 62,500. LATITUDE AND LONGITUDE LINES BEING REPRESENTED BY BORDER LINES AS SHOWN.

- DENOTES ONE INCH SPACES ON BORDER LINE OF ORIGINAL TRACING.

TCP 8027



STATE OF WEST VIRGINIA  
DEPARTMENT OF MINES  
OIL AND GAS DIVISION

Quadrangle Cameron

Permit No. MARS-476

WELL RECORD

STORAGE  GAS  
Oil or Gas Well GAS  
(MIND)

Company The Mfrs. Lt. and Ht. Co.  
Address 800 Union Trust Bldg., Pittsburgh 19, Pa.  
Farm John and Emma Crow Acres 330  
Location (waters) \_\_\_\_\_  
Well No. 4697 Elev. 1191.55  
District Webster County Marshall  
The surface of tract is owned in fee by \_\_\_\_\_  
Address \_\_\_\_\_  
Mineral rights are owned by \_\_\_\_\_  
Address \_\_\_\_\_  
Drilling commenced July 14, 1962  
Drilling completed September 20, 1962  
Date Shot 9/17/62 From Big Injun To \_\_\_\_\_  
With Side Static  
Open Flow 19 PSIG 10ths Water in \_\_\_\_\_ Inch  
40ths Merc. in 4 Inch  
Volume 20,954,000 Cu. Ft.  
Rock Pressure 885 lbs. 72 hrs.  
Oil \_\_\_\_\_ bbls., 1st 24 hrs.  
Fresh water \_\_\_\_\_ feet  
Salt water \_\_\_\_\_ feet

Casing and Tubing	Used in Drilling	Left in Well	Packers
Size			
16			Kind of Packer
13 3/8"	61'3"	61'3"	
10			Size of
8 5/8"	720'11"	720'11"	
8 1/2"	1773'10"	1773'10"	Depth set
5 3/16			
8			Perf. top
2			Perf. bottom
Liners Used			Perf. top
			Perf. bottom

CASING CEMENTED \_\_\_\_\_ SIZE \_\_\_\_\_ No. Ft. \_\_\_\_\_ Date \_\_\_\_\_  
COAL WAS ENCOUNTERED AT 651 FEET \_\_\_\_\_ INCHES  
\_\_\_\_\_ FEET \_\_\_\_\_ INCHES FEET \_\_\_\_\_ INCHES  
\_\_\_\_\_ FEET \_\_\_\_\_ INCHES FEET \_\_\_\_\_ INCHES

Formation	Color	Hard or Soft	Top	Bottom	Oil, Gas or Water	Depth Found	Remarks
Depth Datum - Ground Level							
Pittsburgh Coal		5	651	656	Water - 92'		
Gas Sand		31	1320	1351	Slight show of gas - 1307'		
1st Salt Sand		40	1397	1437	Gas - 1402' Est. 2 1/2 MCF/day		
3rd Salt Sand		41	1584	1625	Water - 1597'		
break		15	1625	1640	Drilled from 1402' to 1777' with gas		
3rd Salt Sand		54	1640	1694	Pay Zones -		
Big Injun			1739		1806-1812 G. R. N. & Driller		
Drilled 7 7/8" hole to 1777' and cemented 5 1/2" casing at 1773'10"					1815-1819 G. R. N. & Driller		
Drilled 4 3/4" hole to 1845 1/2'					1828-1832 Driller		
Total Depth				1845 1/2'	1834-1840 Driller		

