

COAL OWNED BY GEORGE PUE STORAGE  
 NEW LOCATION   
 DRILL DEEPER   
 ABANDONMENT  issued 7-23-69

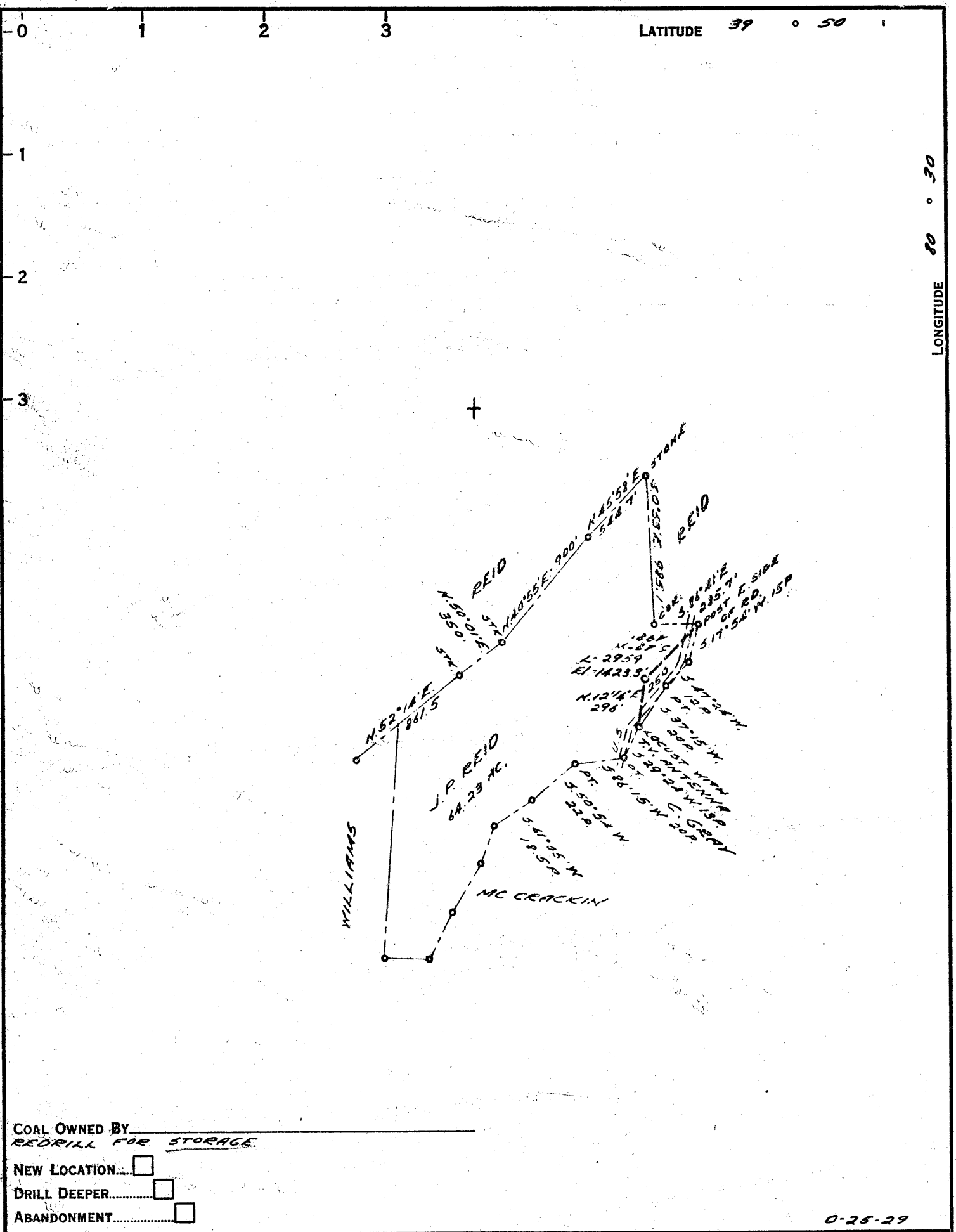
30276 C.P.P.P.  
 0-25-29

COMPANY THE MANUFACTURERS LIGHT & HEAT  
 ADDRESS 800 UNION TRUST BLDG, PCH, PA.  
 FARM J. P. REID  
 TRACT \_\_\_\_\_ ACRES 66 LEASE No. 26590  
 WELL (FARM) No. 1 SERIAL No. 2959  
 ELEVATION (SPIRIT LEVEL) 1423.3'  
 QUADRANGLE CAMERON SE  
 COUNTY MARSHALL DISTRICT LIBERTY  
 ENGINEER Robert M. Heill  
 ENGINEER'S REGISTRATION No. 361-E. (J.F.)  
 FILE No. \_\_\_\_\_ DRAWING No. Y-25520  
 DATE 23 APR 1962 SCALE 1" = 800'

STATE OF WEST VIRGINIA  
 DEPARTMENT OF MINES  
 OIL AND GAS DIVISION  
 CHARLESTON

**WELL LOCATION MAP**  
 FILE No. MARS-457-R-P

+ DENOTES LOCATION OF WELL ON UNITED STATES TOPOGRAPHIC MAPS. SCALE 1 TO 62,500. LATITUDE AND LONGITUDE LINES BEING REPRESENTED BY BORDER LINES AS SHOWN.  
 — DENOTES ONE INCH SPACES ON BORDER LINE OF ORIGINAL TRACING.



COAL OWNED BY \_\_\_\_\_  
REDRILL FOR STORAGE

NEW LOCATION.....

DRILL DEEPER.....

ABANDONMENT.....

0-25-29

COMPANY THE MANUFACTURERS LIGHT & HEAT

ADDRESS 800 UNION TRUST BLDG, PGH, PA.

FARM J.P. REID

TRACT \_\_\_\_\_ ACRES 66 LEASE No. 26590

WELL (FARM) No. 1 SERIAL No. 2959

ELEVATION (SPIRIT LEVEL) 1423.3'

QUADRANGLE CAMERON SE

COUNTY MARSHALL DISTRICT LIBERTY

ENGINEER Robert M. Heill

ENGINEER'S REGISTRATION No. 361-E. (J.F.)

FILE No. \_\_\_\_\_ DRAWING No. Y-25520

DATE 23 APR. 1962 SCALE 1" = 800'

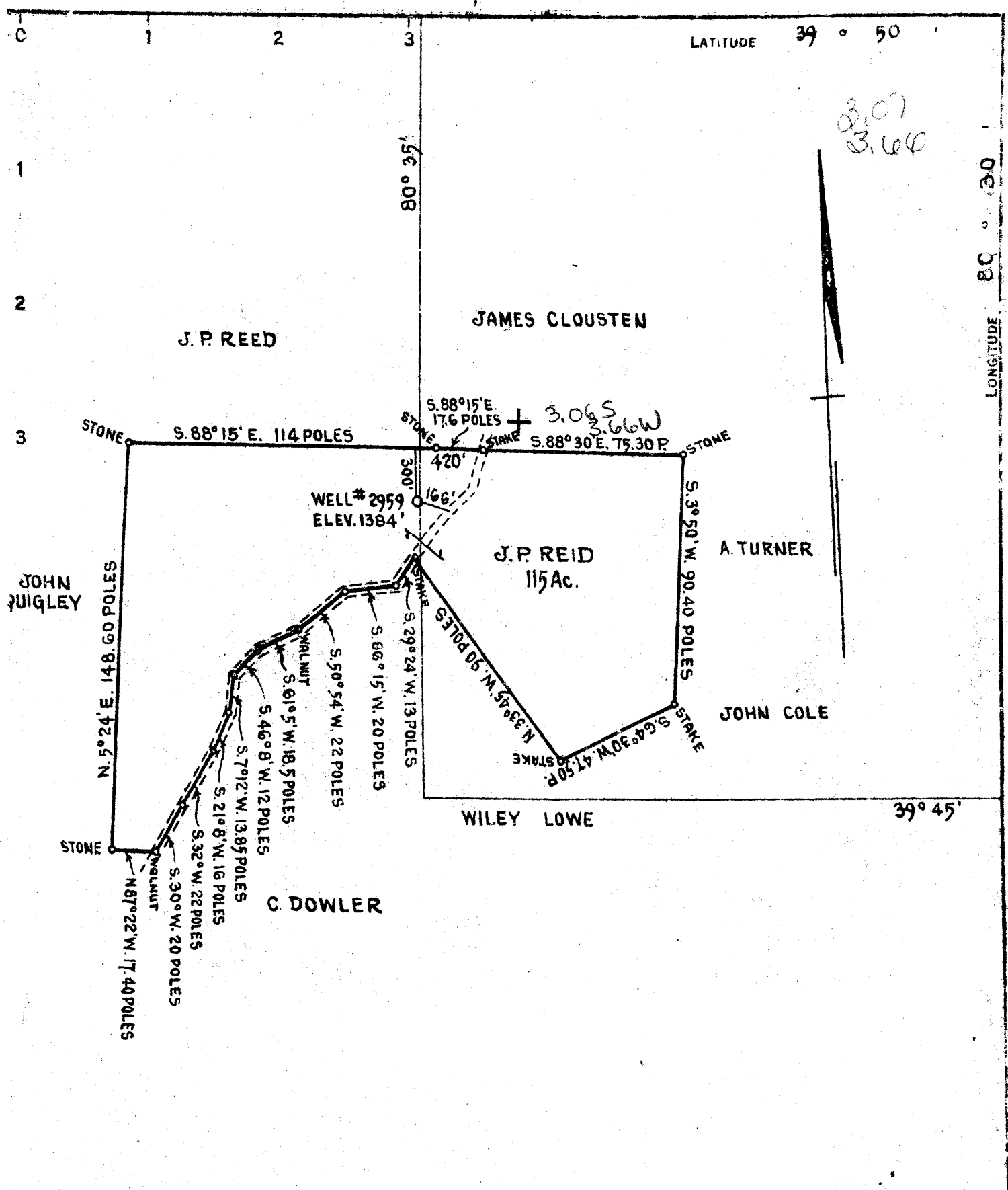
STATE OF WEST VIRGINIA  
 DEPARTMENT OF MINES  
 OIL AND GAS DIVISION  
 CHARLESTON

**WELL LOCATION MAP**

FILE No. MARS-457-R

+ DENOTES LOCATION OF WELL ON UNITED STATES TOPOGRAPHIC MAPS, SCALE 1 TO 62,500. LATITUDE AND LONGITUDE LINES BEING REPRESENTED BY BORDER LINES AS SHOWN.

- DENOTES ONE INCH SPACES ON BORDER LINE OF ORIGINAL TRACING.



COAL OWNED BY GEORGE L. HIBBS, WILLIAM HAWKINS & JOHN T. ROBINSON, ALL OF UNIONTOWN, PA.,

NEW LOCATION   
 DRILL DEEPER   
 ABANDONMENT

COMPANY THE MANUFACTURERS LIGHT & HEAT COMPANY  
 ADDRESS 800 UNION TRUST BLDG, PITTSBURGH PA.,  
 FARM J. P. REED  
 TRACT \_\_\_\_\_ ACRES 115 AC. LEASE NO. 2220  
 WELL (FARM) NO. 1 SERIAL NO. 2959  
 ELEVATION (SPIRIT LEVEL) 1384'  
 QUADRANGLE CAMERON S.E. QUARTER  
 COUNTY MARSHALL DISTRICT LIBERTY  
 ENGINEER W. E. Kaye  
 ENGINEER'S REGISTRATION NO. \_\_\_\_\_  
 FILE NO. \_\_\_\_\_ DRAWING NO. Y-13-40  
 DATE APRIL 13, 1948 SCALE 1" = 800'

STATE OF WEST VIRGINIA  
 DEPARTMENT OF MINES  
 OIL AND GAS DIVISION  
 CHARLESTON

WELL LOCATION MAP

FILE NO. MARS-276-A → 30276

+ DENOTES LOCATION OF WELL ON UNITED STATES TOPOGRAPHIC MAPS. SCALE 1 TO 62,500. LATITUDE AND LONGITUDE LINES BEING REPRESENTED BY BORDER LINES AS SHOWN.

○ DENOTES ONE INCH SPACES ON BORDER LINE OF ORIGINAL TRACING.



STATE OF WEST VIRGINIA  
DEPARTMENT OF MINES  
OIL AND GAS DIVISION

Quadrangle Cameron  
Permit No. MARS-457-R

WELL RECORD

STORAGE GAS  
Oil or Gas Well                       
(KIND)

Company The Mfrs. Lt. and Ht. Co.  
Address 800 Union Trust Bldg., Pittsburgh 19, Pa.  
Farm J. P. Reid Acres 66  
Location (waters)                       
Well No. 2959 Elev. 1423.3'  
District Liberty County Marshall  
The surface of tract is owned in fee by                       
Address                       
Mineral rights are owned by                       
Address                       
Drilling commenced May 23, 1962  
Drilling completed July 24, 1962  
Date Shot 7/24/62 From Big Injun To  
With Orifice Gas Well Tester

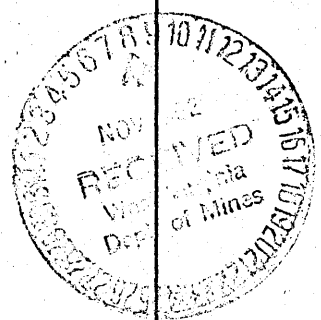
Casing and Tubing	Used in Drilling	Left in Well	Packers
Size			Kind of Packer
16			
13 3/8"	87'	87'	
10 3/4"	245'	245'	Size of
8 1/2 x 5/8"	1235'	1235'	
6 5/8"			Depth set
5 3/16"			
4 1/2"	2228'	2228'	Perf. top
2			Perf. bottom
Liners Used			Perf. top
			Perf. bottom

Open Flow 0 /10ths Water in 1/4 Inch  
/10ths Merc. in                      Inch  
Volume None Cu. Ft.  
Rock Pressure 9 lbs. 6 days hrs.  
Oil                      bbls., 1st 24 hrs.  
Fresh water                      feet  
Salt water                      feet

CASING CEMENTED                      SIZE                      No. Ft.                      Date                       
COAL WAS ENCOUNTERED AT 1074 FEET                      INCHES  
                     FEET                      INCHES                      FEET                      INCHES  
                     FEET                      INCHES                      FEET                      INCHES

Formation	Color	Hard or Soft	Top	Bottom	Oil, Gas or Water	Depth Found	Remarks
✓ Pittsburgh Coal		6	1074	1080			
✓ Little Dunkard		39	1483	1522			
✓ Big Dunkard		23	1580	1603			
✓ 1st Salt Sand		42	1720	1762			
✓ 2nd Salt Sand		32	1835	1867			
✓ 3rd Salt Sand		51	1953	1986			
Maxton Sand		57	2057	2114			
Big Lime		32	2200	2232			
Big Injun			2236				
Total Depth				2470			
4 1/2" Tubing set at			2230'				
Logged to				2470'			

2200  
1423  
777





327

STATE OF WEST VIRGINIA  
DEPARTMENT OF MINES  
OIL AND GAS DIVISION

WELL RECORD

Permit No. 276 A 457

Oil or Gas Well GAS  
(KIND)

Company The Manufacturers Light & Heat Company  
 Address 800 Union Trust Bldg., Pgh. Pa.  
 Farm J. P. Reid Acres 115  
 Location (waters) \_\_\_\_\_  
 Well No. 2959 Elev. 1304  
 District Liberty County Marshall  
 The surface of tract is owned in fee by Jno. P. Reid  
Star Route Address Cameron, W. Va.  
 Mineral rights are owned by The Manufacturers Light & Heat Co.  
800 Union Trust Bldg., Address Pgh., Pa.  
 Drilling commenced Dec. 4th, 1924  
 Drilling completed Feb. 7th, 1925  
 Date Shot \_\_\_\_\_ From \_\_\_\_\_ To \_\_\_\_\_  
 With \_\_\_\_\_

Casing and Tubing	Used in Drilling	Left in Well	Packers
Size			
16			Kind of Packer
18			
10	250		Size of
8 1/2	1320		
5 3/16	2195	2195	Depth set
3			Perf. top
2			Perf. bottom
Liners Used			Perf. top
			Perf. bottom

Open Flow \_\_\_\_\_ /10ths Water in \_\_\_\_\_ Inch  
 \_\_\_\_\_ /10ths Merc. in \_\_\_\_\_ Inch  
 Volume \_\_\_\_\_ Cu. Ft.  
 Rock Pressure \_\_\_\_\_ lbs. \_\_\_\_\_ hrs.  
 Oil \_\_\_\_\_ bbls., 1st 24 hrs.  
 Fresh water \_\_\_\_\_ feet \_\_\_\_\_ feet  
 Salt water \_\_\_\_\_ feet \_\_\_\_\_ feet

CASING CEMENTED \_\_\_\_\_ SIZE \_\_\_\_\_ No. Ft. \_\_\_\_\_ Date \_\_\_\_\_

COAL WAS ENCOUNTERED AT 1075 FEET 8 1/2 INCHES  
 \_\_\_\_\_ FEET \_\_\_\_\_ INCHES \_\_\_\_\_ FEET \_\_\_\_\_ INCHES  
 \_\_\_\_\_ FEET \_\_\_\_\_ INCHES \_\_\_\_\_ FEET \_\_\_\_\_ INCHES

Formation	Color	Hard or Soft	Top	Bottom	Oil, Gas or Water	Depth Found	Remarks
Slate			0	50			
Lime			50	150			
Clay			150	250			
Slate & Shells			250	350			
Sand			350	450			
Slate & Lime			450	550			
Little Lime			550	650			
Slate Lime & Shells			650	750			
Slate			750	850			
Shells			850	950			
Slate & Lime			950	1075			
Pittsburgh Coal			1075	1082			
Red Rock			1082	1475			
Little Dundard			1475	1530			
Sand			1530	1590			
Big Dunkard			1590	1610			
Gas Sand			1610	1720			
Sand			1720	1770			
Slate & Shells			1770	1835			
Salt Sand			1835	1870			
Slate & Lime			1870	1970			
2nd Sand			1970	1990			
Slate			1990	2045			
Salt Sand			2045	2118			
Slate & Shells			2118	2145			
Red Rock			2145	2165			
Marshall Sand			2165	2190			
Ktner Sand			2190	2230			
Big Sand			2230	2255			
Big Injun			2255	2490			
Lime			2490	3039			
Fifty Foot			3039	3055			
Slate & Lime			3055	3095			
Gordon			3095	3122			
TOTAL DEPTH			3283				

Gas at 1972

