

COAL OWNED BY REDRILL FOR STORAGE
 NEW LOCATION...
 DRILL DEEPER...
 ABANDONMENT... issued 7-15-70

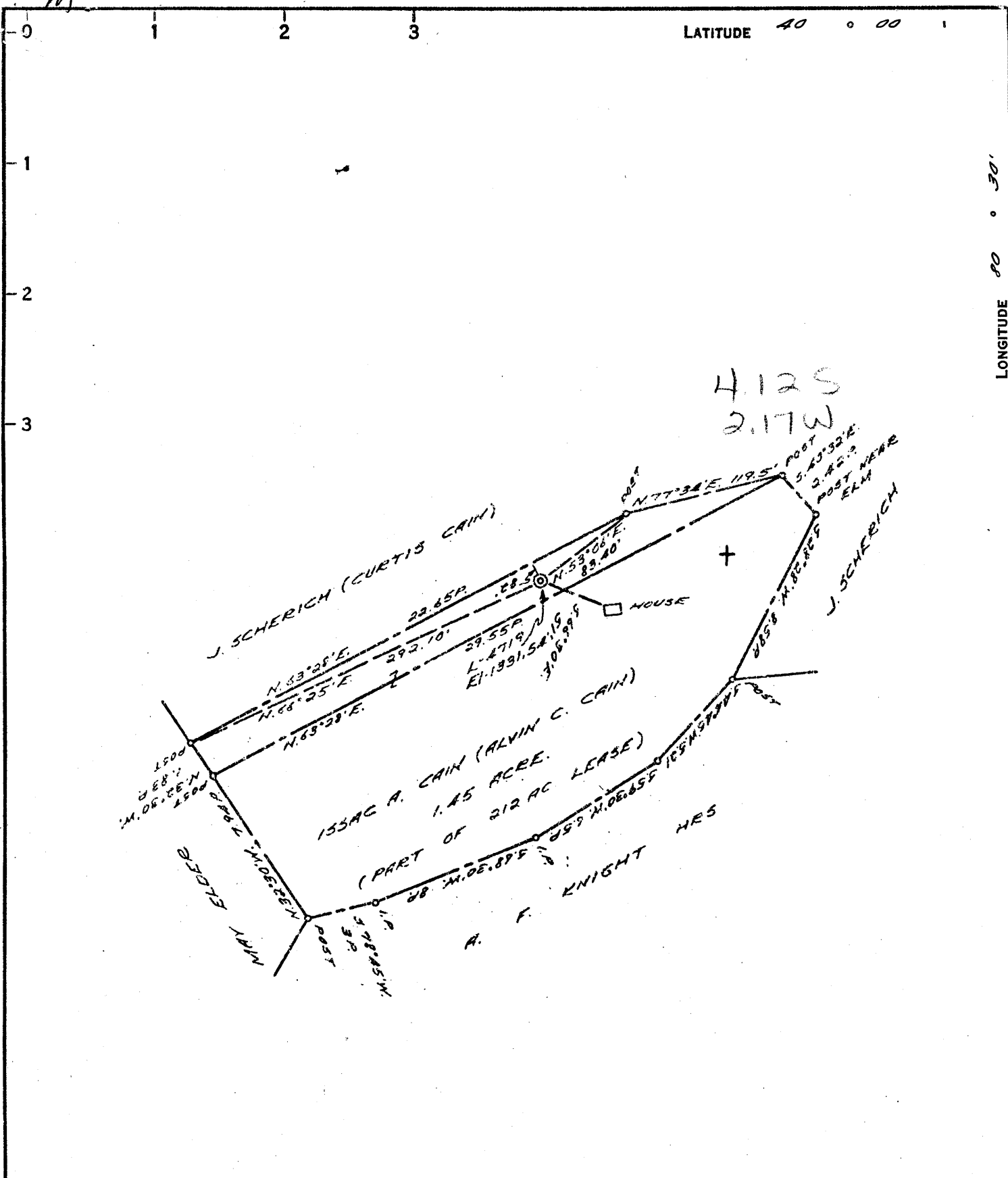
0-25-10

COMPANY THE MANUFACTURERS LIGHT & HEAT
 ADDRESS 800 UNION TRUST BLDG. PGH., PA.
 FARM 155 AC. CAIN
 TRACT _____ ACRES 212 LEASE No. 1928A
 WELL (FARM) No. 2 SERIAL No. 4719
 ELEVATION (SPIRIT LEVEL) 1391.54'
 QUADRANGLE CAMERON NE
 COUNTY MARSHALL DISTRICT WEBSTER
 ENGINEER Robert M. Heill
 ENGINEER'S REGISTRATION No. 361-E (O.G.)
 FILE No. _____ DRAWING No. Y-25-527
 DATE 3 MAY 62 SCALE 1" = 100'

STATE OF WEST VIRGINIA
 DEPARTMENT OF MINES
 OIL AND GAS DIVISION
 CHARLESTON

WELL LOCATION MAP
 File No. MARS-450-Red-P

+ DENOTES LOCATION OF WELL ON UNITED STATES TOPOGRAPHIC MAPS, SCALE 1 TO 62,500. LATITUDE AND LONGITUDE LINES BEING REPRESENTED BY BORDER LINES AS SHOWN.
 - DENOTES ONE INCH SPACES ON BORDER LINE OF ORIGINAL TRACING.



COAL OWNED BY _____
 REDRILL FOR STORAGE _____

NEW LOCATION.....

DRILL DEEPER.....

ABANDONMENT.....

0-25-10

COMPANY THE MANUFACTURERS LIGHT & HEAT

ADDRESS 800 UNION TRUST BLDG. PGH., PA.

FARM 155AC A. CAIN

TRACT _____ ACRES 212 LEASE No. 19484

WELL (FARM) No. 2 SERIAL No. 4719

ELEVATION (SPIRIT LEVEL) 1391.54'

QUADRANGLE CAMERON NE

COUNTY MARSHALL DISTRICT WEBSTER

ENGINEER Robert M. Heill

ENGINEER'S REGISTRATION No. 361-E (O.G.)

FILE No. _____ DRAWING No. Y-25-527

DATE 3 MAY 62 SCALE 1" = 100'

STATE OF WEST VIRGINIA
 DEPARTMENT OF MINES
 OIL AND GAS DIVISION
 CHARLESTON

WELL LOCATION MAP
 File No. MARS-450-R

+ DENOTES LOCATION OF WELL ON UNITED STATES TOPOGRAPHIC MAPS, SCALE 1 TO 62,500. LATITUDE AND LONGITUDE LINES BEING REPRESENTED BY BORDER LINES AS SHOWN.

- DENOTES ONE INCH SPACES ON BORDER LINE OF ORIGINAL TRACING.



STATE OF WEST VIRGINIA
DEPARTMENT OF MINES
OIL AND GAS DIVISION

Quadrangle Littleton

Permit No. MARS-450-R

WELL RECORD

Oil or Gas Well DRY

Company The Mfrs. Lt. and Rt. Co.
Address 800 Union Trust Bldg., Pittsburgh 19, Pa.
Farm Isaac Cain Farm Acres 212

Location (waters)
Well No. 4719 Elev. 1331.540504
District Webster County Marshall

The surface of tract is owned in fee by _____
Address _____

Mineral rights are owned by _____
Address _____

Drilling commenced July 6, 1962

Drilling completed June 27, 1963

Date Shot 6/27/63 From Big Injun

With Dry Hole

Open Flow /10ths Water in _____ Inch

/10ths Merc. in _____ Inch

Volume Dry Hole Cu. Ft.

Rock Pressure _____ lbs. _____ hrs.

Oil _____ bbls., 1st 24 hrs.

Fresh water _____ feet _____ feet

Salt water _____ feet _____ feet

Casing and Tubing	Used in Drilling	Left in Well	Packers
Size			Kind of Packers
18 3/8"	132'5"	132'5"	
16 3/4"	807'2"	807'2"	Size of
8 1/2"	1911'10"	1911'10"	Depth set
6"			Perf. top
5 1/2"			Perf. bottom
Liners Used			Perf. top
			Perf. bottom

CASING CEMENTED _____ SIZE _____ No. Ft. _____ Date _____

COAL WAS ENCOUNTERED AT 798 FEET _____ INCHES

_____ FEET _____ INCHES _____ FEET _____ INCHES

_____ FEET _____ INCHES _____ FEET _____ INCHES

Formation	Color	Thickness	Top	Bottom	Oil, Gas or Water	Depth Found	Remarks
✓ Pittsburgh Coal		5	798	803			
✓ Gas Sand		42	1456	1498			
✓ 1st Salt Sand		38	1567	1605			
✓ 3rd Salt Sand		76	1775	1851			
✓ Big Injun			1881				
Redrilled to original depth of 2075'							
TOTAL DEPTH				2075			Recomputed from Gamma Ray, Gamma-Gamma & Induction Surveys: Pay Zone: 1966-2014 Shaled Out DRY HOLE

