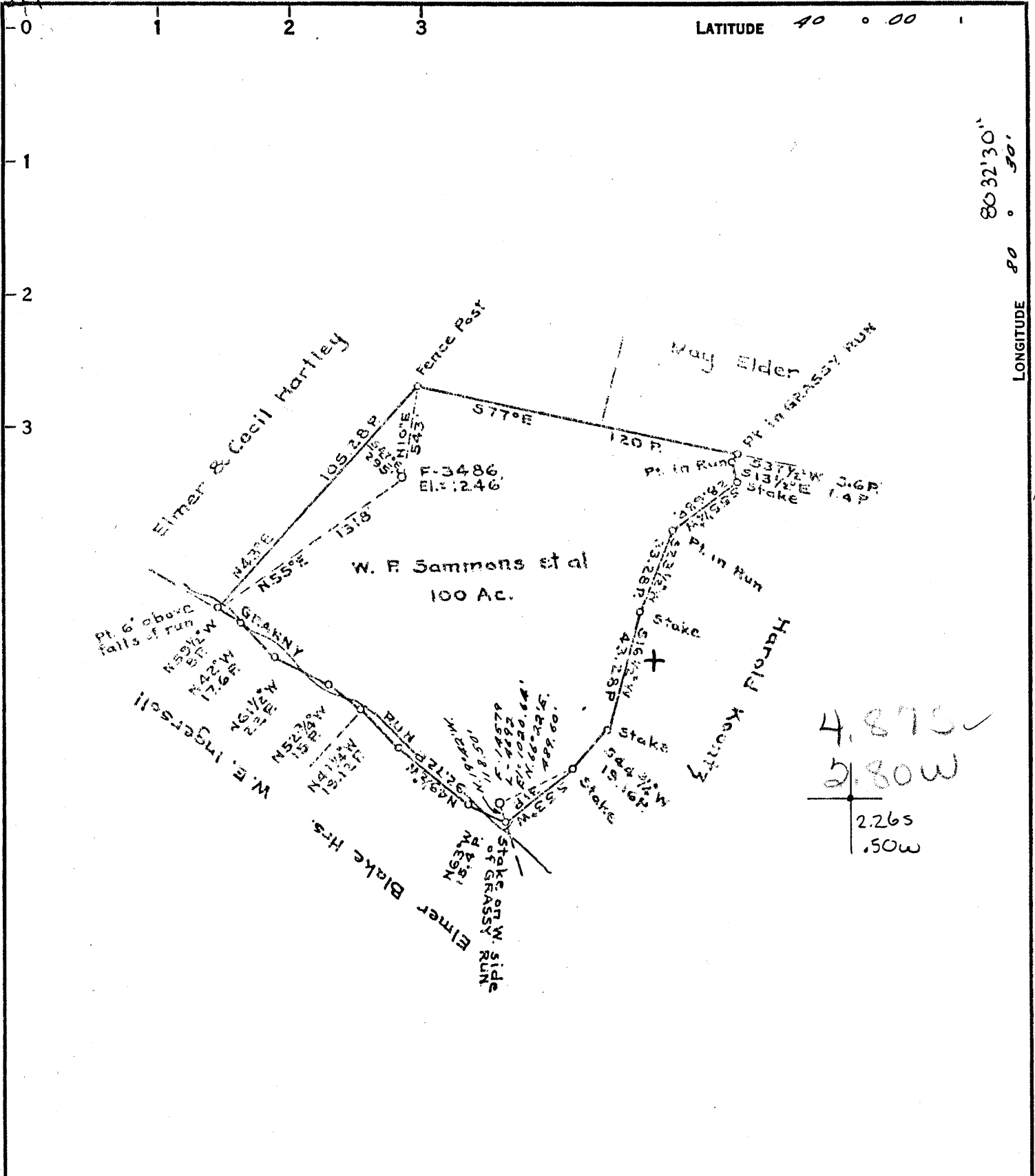


39°57'30"

LATITUDE

40 0 00

80°32'30"  
LONGITUDE 80 0 50'



COAL OWNED BY  
 REDRILL FOR STORAGE

NEW LOCATION

DRILL DEEPER

ABANDONMENT

0-25-9

COMPANY THE MANUFACTURERS LIGHT & HEAT

ADDRESS 800 UNION TRUST BLDG., PGH. PA.

FARM HARSH-SAMMONS

TRACT \_\_\_\_\_ ACRES 100 LEASE No. 19437

WELL (FARM) No. 2 SERIAL No. 4692

ELEVATION (SPIRIT LEVEL) 1020.64'

QUADRANGLE CAMERON NE

COUNTY MARSHALL DISTRICT WEBSTER

ENGINEER A. C. Streater M.

ENGINEER'S REGISTRATION No. 9442

FILE No. \_\_\_\_\_ DRAWING No. Y-25-494

DATE 7 MAR. 1962 SCALE 1" = 800'

STATE OF WEST VIRGINIA  
 DEPARTMENT OF MINES  
 OIL AND GAS DIVISION  
 CHARLESTON

WELL LOCATION MAP

FILE No. MARS-441-P

+ DENOTES LOCATION OF WELL ON UNITED STATES TOPOGRAPHIC MAPS, SCALE 1 TO 62,500, LATITUDE AND LONGITUDE LINES BEING REPRESENTED BY BORDER LINES AS SHOWN.

- DENOTES ONE INCH SPACES ON BORDER LINE OF ORIGINAL TRACING.

