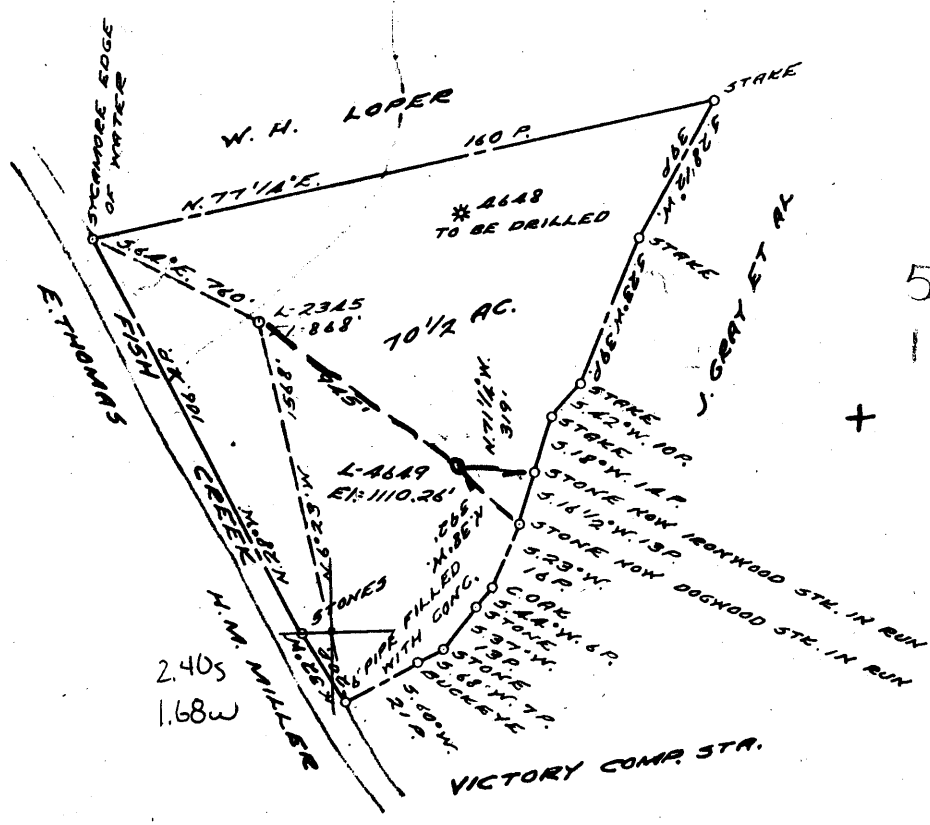


LATITUDE 39° 0' 50"
 39° 47' 30"
 LONGITUDE 80° 35'



COAL OWNED BY _____

NEW LOCATION... FOR STORAGE

DRILL DEEPER...

ABANDONMENT...

0-25-28

COMPANY THE MANUFACTURERS LIGHT & HEAT

ADDRESS 800 UNION TRUST BLDG., PCH. PA.

FARM JASON GRAY

TRACT _____ ACRES 71 LEASE No. 2262

WELL (FARM) No. 3 SERIAL No. 4649

ELEVATION (SPIRIT LEVEL) 1110.26'

QUADRANGLE CAMERON - 3

COUNTY MARSHALL DISTRICT LIBERTY

ENGINEER Robert A. Hill (J.R.)

ENGINEER'S REGISTRATION No. 361-E.

FILE No. _____ DRAWING No. Y-25-332

DATE 27 APR. 1961 SCALE 1" = 800'

STATE OF WEST VIRGINIA
 DEPARTMENT OF MINES
 OIL AND GAS DIVISION
 CHARLESTON

WELL LOCATION MAP

FILE No. MARS-416

+ DENOTES LOCATION OF WELL ON UNITED STATES TOPOGRAPHIC MAPS. SCALE 1 TO 62,500. LATITUDE AND LONGITUDE LINES BEING REPRESENTED BY BORDER LINES AS SHOWN.

- DENOTES ONE INCH SPACES ON BORDER LINE OF ORIGINAL TRACING.

9-0-25



STATE OF WEST VIRGINIA
DEPARTMENT OF MINES
OIL AND GAS DIVISION

Quadrangle Cameron
~~X-11111111~~

WELL RECORD

Storage

Permit No. MARS-416

Oil or Gas Well GAS
(KIND)

Company The Manufacturers Lt. and Ht. Co.
Address 800 Union Trust Building, Pittsburgh 19, Pa.
Farm Jason Grey Acres 71
Location (waters) _____
Well No. L-4649 Elev. 1130'5"
District Liberty County Marshall
The surface of tract is owned in fee by _____
Address _____
Mineral rights are owned by _____
Address _____
Drilling commenced October 27, 1961
Drilling completed November 7, 1961
Date Shot 11/7/61 From 2032 Big Injun To 2038
With Side Static Tester
Open Flow 40 Lbs. 4 1/2 Inch
~~X 10ths Water~~
/10ths Merc. in _____ Inch
Volume 33,542,000 Cu. Ft.
Rock Pressure 780 lbs. 24 hrs.
Oil _____ bbls., 1st 24 hrs.
Fresh water _____ feet
Salt water _____ feet

| Casing and Tubing | Used in Drilling | Left in Well | Packers |
|-------------------|------------------|--------------|----------------|
| Size | | | Kind of Packer |
| 16 | | | |
| 18 3/8" | 94' | 94' | |
| 10 | | | Size of |
| 8 1/2 5/8" | 845' | 845' | |
| 6 5/8 x 5 1/2" | 1908' | 1908' | Depth set |
| 5 3/16 | | | |
| 8 | | | Perf. top |
| 2 | | | Perf. bottom |
| Liners Used | | | Perf. top |
| | | | Perf. bottom |

| CASING CEMENTED | SIZE | No. Ft. | Date |
|---|------|---------|------|
| | | | |
| COAL WAS ENCOUNTERED AT <u>797</u> FEET <u>INCHES</u> | | | |
| | | | |
| | | | |
| | | | |

| Formation | Color | Hard or Soft | Top | Bottom | Oil, Gas or Water | Depth Found | Remarks |
|--|-------|--------------|------|--------|--|-------------|---------|
| Schlumberger Well Survey | | | | | | | |
| Pittsburgh Coal | | | 797 | 803 | | | |
| Big Lime | | | 1882 | 1937 | | | |
| Big Injun Sand | | | 1937 | | Gas in Big Injun 2032', not drilled through | | |
| TOTAL DEPTH | | | | 2099 | | | |
| NOTE: Well logged 11/7/61 by Schlumberger Well Survey Corp., logged to total depth of 2099'. | | | | | Note: 17 1/2" Hole drilled to 112', Run 95' of 13-3/8" Casing Sm. Gr. H-48#, beveled on bottom, and cemented with 125 Bg. Cement, 1 Bg. Jel Flakes and 17 Bg. Cal. Chloride, 14 5# per gal, Good return of cement at surface. Drilled 12-1/4" Hole to 867', Run 851' of 8-5/8" Casing Sm. Gr. J-24#, set on a Float Guide Shoe at 845'. Cemented with 450 Bg. Cement, 11 Bg. Aquagel and 2 Bg. Hydrotan. Good return of cement at surface. Drilled 7-7/8" Hole to 2079', Run 1920' of 5-1/2" Casing Sm. Gr. J-17# on a Formation Packer Shoe set at 1910'. Cemented with 450 Bg. Cement, 2 Bg. Hydrotan. Good return of cement at surface. 4-3/4" Hole drilled to total depth of 2099'. (Ground Level) | | |
| Driller's Log | | | | | | | |
| Surface Clays and Sand | | | 0 | 120 | | | |
| Sand & Shale | | | 120 | 340 | | | |
| Sandy Shale | | | 340 | 690 | | | |
| Sand | | | 690 | 704 | | | |
| Coal | | | 704 | 710 | | | |
| Sand and Shale | | | 710 | 800 | | | |
| Coal | | | 800 | 810 | | | |
| Sand & Shale | | | 810 | 1815 | | | |
| Sand & Lime | | | 1815 | 2064 | | | |
| Sand | | | 2064 | 2112 | | | |

1882
1131
751

