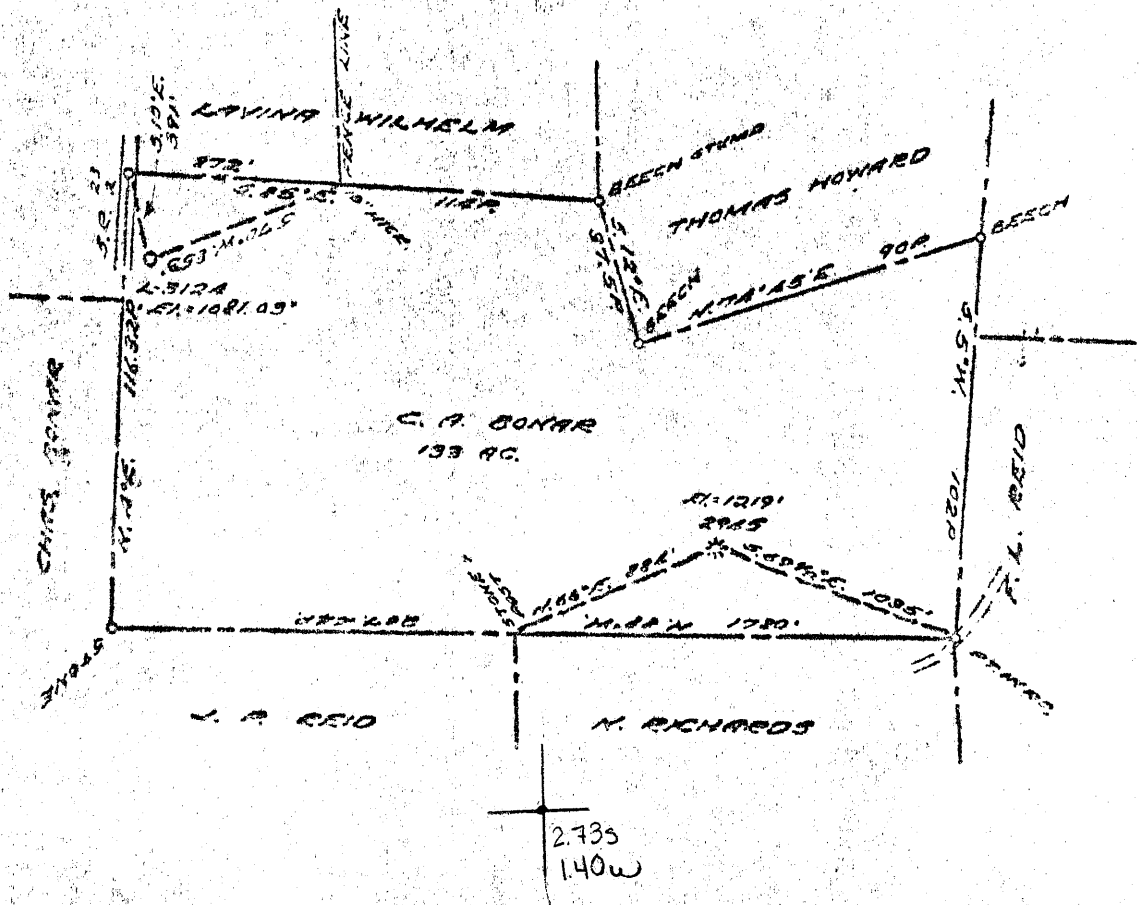


15'  
2.73S  
3.70W

LONGITUDE 80 32 30 1



COAL OWNED BY RECONSTRUCTION  
 NEW LOCATION   
 DRILL DEEPER   
 ABANDONMENT  limited 3-2-70

u.c.  
30255

COMPANY THE MANUFACTURERS LIGHT & HEAT  
 ADDRESS 300 UNION TRUST BLDG. PENN. PA.  
 FARM C. A. BONAR  
 TRACT ACRES 133 LEASE NO. 34931  
 WELL (FORM) NO. 1 SERIAL NO. 2245  
 ELEVATION (SPIRIT LEVEL) 1219'  
 QUADRANGLE SANDEWY SE  
 COUNTY BARRELL DISTRICT LIBERTY  
 DRAWING NO. 1000  
 SCALE 1" = 800'

STATE OF WEST VIRGINIA  
 DEPARTMENT OF MINES  
 OIL AND GAS DIVISION  
 CHARLESTON

WELL LOCATION MAP

FILE NO. MARS-406-R-P

+ DENOTES LOCATION OF WELL ON UNITED STATES TOPOGRAPHIC MAPS. SCALE 1 TO 62,500. LATITUDE AND LONGITUDE LINES BEING REPRESENTED BY BORDER LINES AS SHOWN.  
 -- DENOTES ONE INCH SPACES ON BORDER LINE OF ORIGINAL TRACING.

M

0 1 2 3 LATITUDE 39 ° 50 ' 1

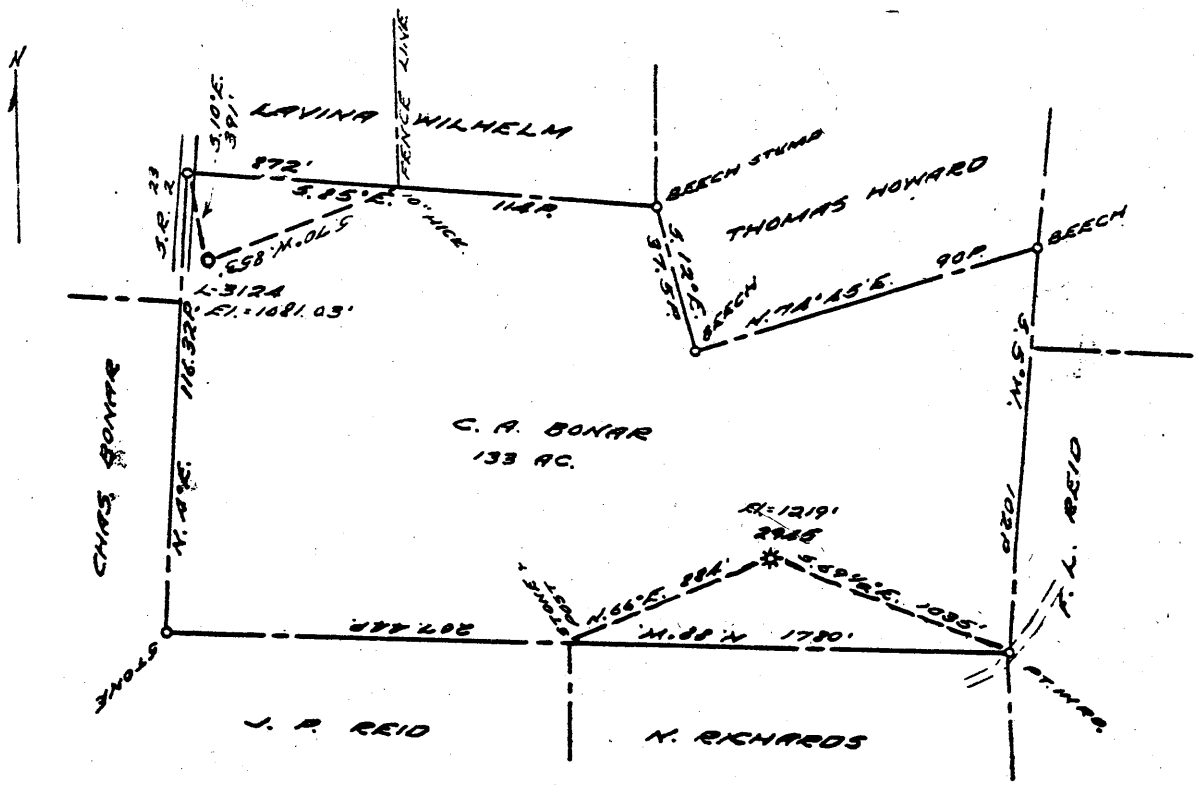
1

2

3

LONGITUDE 80 ° 30 ' 1

2765  
3.69W



COAL OWNED BY \_\_\_\_\_  
 RECONDITION \_\_\_\_\_

NEW LOCATION...

DRILL DEEPER...

ABANDONMENT...

30255

0-25-24

COMPANY THE MANUFACTURERS LIGHT & HEAT

ADDRESS 800 UNION TRUST BLDG. PCH. PA.

FARM C. A. BONAR

TRACT \_\_\_\_\_ ACRES 133 LEASE No. 26931

WELL (FARM) No. 1 SERIAL No. 2945

ELEVATION (SPIRIT LEVEL) 1219'

QUADRANGLE CAMERON SE

COUNTY MARSHALL DISTRICT LIBERTY

ENGINEER Thomas C. Yagin

ENGINEER'S REGISTRATION No. 1503

FILE No. \_\_\_\_\_ DRAWING No. Y-25283

DATE 20 FEB. 1961 SCALE 1" = 800'

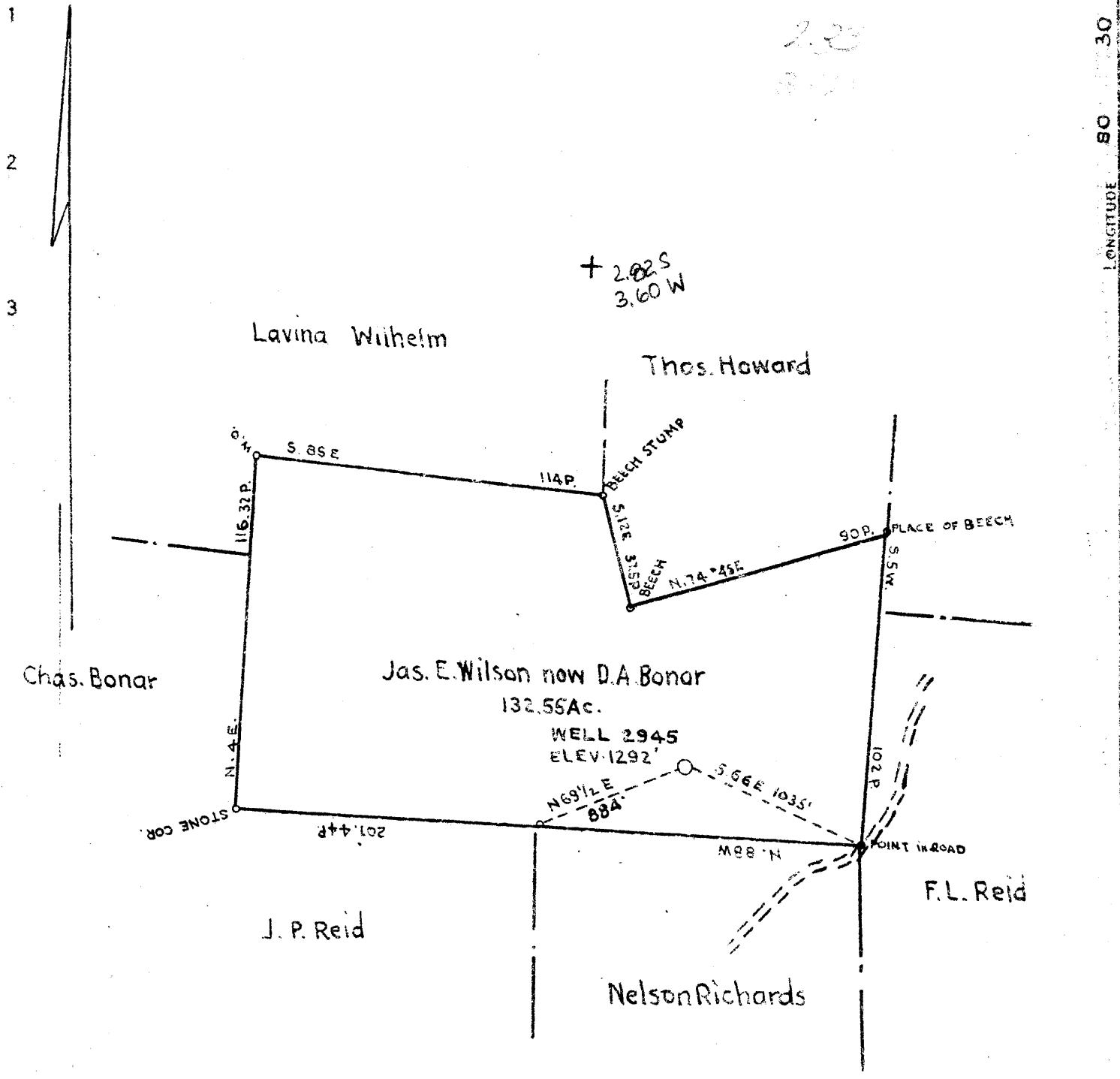
STATE OF WEST VIRGINIA  
 DEPARTMENT OF MINES  
 OIL AND GAS DIVISION  
 CHARLESTON

### WELL LOCATION MAP

File No. MARS-466-R

+ DENOTES LOCATION OF WELL ON UNITED STATES TOPOGRAPHIC MAPS, SCALE 1 TO 62,500. LATITUDE AND LONGITUDE LINES BEING REPRESENTED BY BORDER LINES AS SHOWN.

- DENOTES ONE INCH SPACES ON BORDER LINE OF ORIGINAL TRACING.



TRACT OWNED BY STATE OF WEST VIRGINIA

NEW LOCATION

DRILL DEEPER

ABANDONMENT

COMPANY THE MANUFACTURERS LIGHT AND HEAT CO.

ADDRESS 800 UNION TRUST BLD'G PITTSBURGH PA

FARM JAS. E. WILSON NOW D. ALBERT BONAR

TRACT \_\_\_\_\_ ACRES 132.55 LEASE NO. 2867

WELL (FARM) NO. 2 SERIAL NO. 2945

ELEVATION (SPIRIT LEVEL) 1292'

QUADRANGLE CAMERON SE

COUNTY MARSHALL DISTRICT LIBERTY

ENGINEER *J. M. Merrett*

ENGINEER'S REGISTRATION NO. \_\_\_\_\_

FILE NO. W.B. 24 P. 76 DRAWING NO. Y-11-274

DATE AUG-30-46 SCALE 1" = 800'

STATE OF WEST VIRGINIA  
 DEPARTMENT OF MINES  
 OIL AND GAS DIVISION  
 CHARLESTON

WELL LOCATION MAP

FILE NO. MARS-255-A → 406

○ DENOTES LOCATION OF WELL ON UNITED STATES TOPOGRAPHIC MAPS SCALE 1 TO 62,500. LATITUDE AND LONGITUDE LINES BEING REPRESENTED BY BORDER LINES AS SHOWN.

□ DENOTES ONE INCH SPACES ON BORDER LINE OF ORIGINAL TRACING.



STATE OF WEST VIRGINIA  
DEPARTMENT OF MINES  
OIL AND GAS DIVISION

Quadrangle Cameron

Permit No. MARS-406-R

WELL RECORD

*Storage*

Oil or Gas Well GAS  
(KIND)

Company The Manufacturers Lt. and Ht. Co.  
Address 800 Union Trust Bldg., Pitts. 19, Pa.  
Farm E. A. and Esie Bonar Acres 133  
Location (waters) \_\_\_\_\_  
Well No. L-2945 Elev. 1292'  
District Liberty County Marshall  
The surface of tract is owned in fee by \_\_\_\_\_  
Address \_\_\_\_\_  
Mineral rights are owned by \_\_\_\_\_  
Address \_\_\_\_\_  
Drilling commenced March 13, 1961  
Drilling completed June 16, 1961  
Date Shot 6/20/61 From 2015 To 2240  
With Orifice Well Tester  
Open Flow 0 /10ths Water in 1/4 Inch  
0 /10ths Merc. in \_\_\_\_\_ Inch  
Volume None Cu. Ft.  
Rock Pressure \_\_\_\_\_ lbs. \_\_\_\_\_ hrs.  
Oil \_\_\_\_\_ bbls., 1st 24 hrs.  
Fresh water \_\_\_\_\_ feet \_\_\_\_\_ feet  
Salt water \_\_\_\_\_ feet \_\_\_\_\_ feet

Casing and Tubing	Used in Drilling	Left in Well	Packers
Size			Kind of Packer
16			
18			
10 3/4"	231	231	Size of
8 5/8"	926	1188	Depth set
<del>7"</del> 7"	1348	1348	
<del>5 1/2"</del> 5 1/2"	1995	2015	
3			Perf. top
2			Perf. bottom
Liners Used			Perf. top
			Perf. bottom

CASING CEMENTED \_\_\_\_\_ SIZE \_\_\_\_\_ No. Ft. \_\_\_\_\_ Date \_\_\_\_\_

COAL WAS ENCOUNTERED AT 845 FEET \_\_\_\_\_ INCHES

\_\_\_\_\_ FEET \_\_\_\_\_ INCHES \_\_\_\_\_ FEET \_\_\_\_\_ INCHES

\_\_\_\_\_ FEET \_\_\_\_\_ INCHES \_\_\_\_\_ FEET \_\_\_\_\_ INCHES

Formation	Color	Hard or Soft	Top	Bottom	Oil, Gas or Water	Depth Found	Remarks
		THICKNESS					
✓ Pittsburgh Coal		8	845	853			
✓ Lower Maxton Sand		6	1960	1966			
✓ Big Lime			1970				
✓ Big Injun Sand				2263			
Old 5" Casing		20	1995	2015			
Set new 5 1/2" casing Plugged back to TOTAL DEPTH			2240	1995 2240			
Run new 8 5/8" casing on a steel die nipple to a depth of 926' and connected it to 262' of original 8" casing, left in the hole.							
Run new 5 1/2" casing on a steel shoe to a depth of 1995' and set it on top of 20' of original 5" casing, left in the hole.							



303

STATE OF WEST VIRGINIA  
DEPARTMENT OF MINES  
OIL AND GAS DIVISION

WELL RECORD

16  
Permit No. 255-A → 406

Oil or Gas Well Gas  
(KIND)

Company THE MANUFACTURERS LIGHT & HEAT COMPANY  
 Address 800 Union Trust Bldg., Pgh, Penna.  
 Farm John E. Wilson Acres 132.55  
 Location (waters) \_\_\_\_\_  
 Well No. 2945 Elev. 1292'  
 District Liberty County Marshall  
 The surface of tract is owned in fee by C. A. & Elsie Bonar  
Box 141, Cameron, W. Va.  
 Mineral rights are owned by The Mfrs. Lt. & Ht. Co.  
800 Union Trust Bldg., Address Pitts. Pa.  
 Drilling commenced Nov. 28, 1924  
 Drilling completed Feb. 19, 1925  
 Date Shot \_\_\_\_\_ From \_\_\_\_\_ To \_\_\_\_\_  
 With \_\_\_\_\_  
 Open Flow 2 1/10ths Water in \_\_\_\_\_ 3 Inch  
 \_\_\_\_\_ /10ths Merc. in \_\_\_\_\_ Inch  
 Volume \_\_\_\_\_ Cu. Ft.  
 Rock Pressure \_\_\_\_\_ lbs. \_\_\_\_\_ hrs.  
 Oil \_\_\_\_\_ bbls., 1st 24 hrs.  
 Fresh water \_\_\_\_\_ feet \_\_\_\_\_ feet  
 Salt water \_\_\_\_\_ feet \_\_\_\_\_ feet

Casing and Tubing	Used in Drilling	Left in Well	Packers
Size			
16			Kind of Packer
18			
10	<u>2 1/4</u>		Size of
8 1/4	<u>1157</u>	<u>1157</u>	
6 1/2	<u>1561</u>	<u>1561</u>	Depth set
5 3/16	<u>2018</u>	<u>2018</u>	
3			Perf. top
2			Perf. bottom
Liners Used			Perf. top
			Perf. bottom

CASING CEMENTED \_\_\_\_\_ SIZE \_\_\_\_\_ No. Ft. \_\_\_\_\_ Date \_\_\_\_\_  
 COAL WAS ENCOUNTERED AT 570 FEET 36 INCHES  
748 FEET 60 INCHES 850 FEET 84 INCHES  
 \_\_\_\_\_ FEET \_\_\_\_\_ INCHES \_\_\_\_\_ FEET \_\_\_\_\_ INCHES

Formation	Color	Hard or Soft	Top	Bottom	Oil, Gas or Water	Depth Found	Remarks
Clay, Slate & Lime			0	570			
Waynesburg Coal			570	573	Little Gas at 573'		
Lime			573	748			
Mapletown Coal			748	753			
Lime			753	850			
Pittsburgh Coal			850	857			
Lime & Red Rock			857	1068			
Murphy Sand			1068	1081			
Lime & Red Rock			1081	1257			
Little Dunkard			1257	1338			
Slate			1338	1357			
Big Dunkard			1357	1381			
Slate, Shells & Lime			1381	1491			
Sand			1491	1570			
Slate			1570	1601			
First Salt Sand			1601	1661			
Shale			1661	1710			
Second Salt Sand			1710	1760			
Slate & Shells			1760	1830			
Maxon Sand			1830	1920	2 1/10 water in 3"		
Slate & Shells			1920	1936			
Little Lime			1936	1960			
Percil Cave			1960	1966			
Big Lime			1966	2010			
Big Injun			2010	2274			
Slate & Shells			2274	2650			
Thirty Foot.			2650	2680			
Slate & Shells			2680	2803	Show gas 2804		
Fifty Foot			2803	2846			
Slate & Shells			2846	2875	Gas at 2907		
Gordon Sand			2875	2912			
Fourth Sand			2912	2935			
Slate & Shells			2935	2945			
Slate & Shells			2945	2970			
Fifth Sand			2970	2973			
Slate			2973	2979			
Total Depth				2979			



Formation	Color	Hard or Soft	Top	Bottom	Oil, Gas or Water	Depth Found	Remarks

Date September 4th 1946, 194

APPROVED THE MANUFACTURERS LIGHT & HEAT CO., Owner

By *Paul Cooper*  
 (Title) LAND AGENT.

