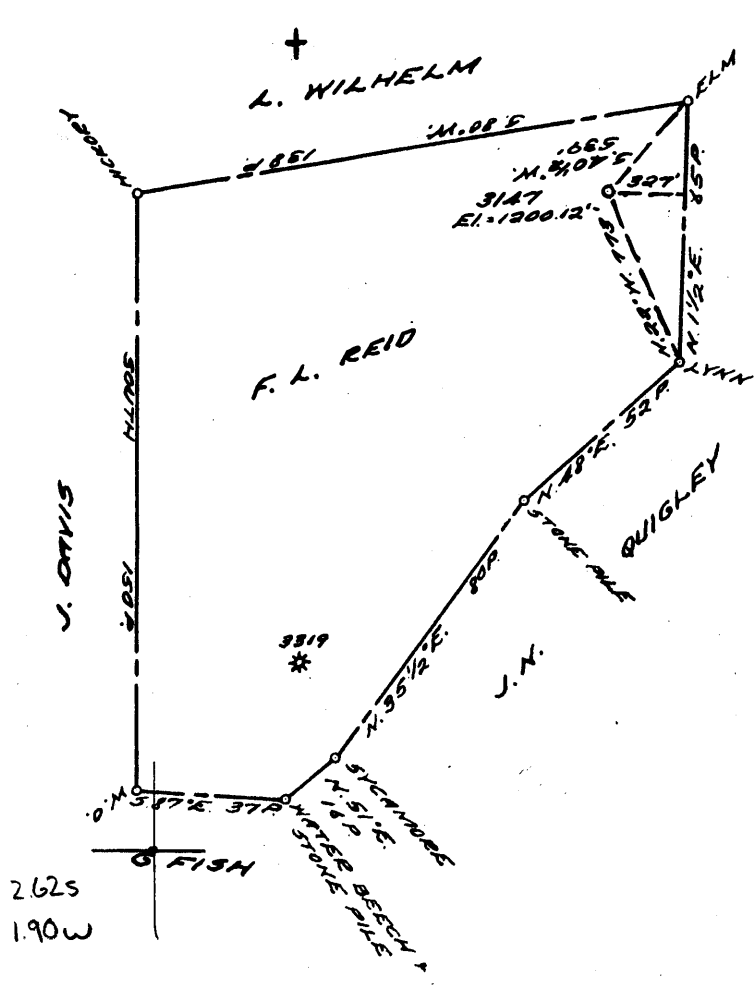


LATITUDE 39 ° 50 ' 1

LONGITUDE 80 ° 30 ' 1

2.67E ✓
4.23W



COAL OWNED BY _____
 RECONDITION

NEW LOCATION.....

DRILL DEEPER.....

ABANDONMENT.....

0-25-29

COMPANY THE MANUFACTURERS LIGHT & HEAT

ADDRESS 800 UNION TRUST BLDG. PCH. W. VA.

FARM F. L. REID

TRACT _____ ACRES 100 LEASE NO. 5130

WELL (FARM) NO. X 2 SERIAL NO. 3147

ELEVATION (SPIRIT LEVEL) 1200.12'

QUADRANGLE CAMERON SE

COUNTY MARSHALL DISTRICT LIBERTY

ENGINEER Robert M. Hoell J.E.

ENGINEER'S REGISTRATION NO. 361-E

FILE NO. _____ DRAWING NO. Y-25-255

DATE 21 DEC. 60 SCALE 1"=800'

STATE OF WEST VIRGINIA
 DEPARTMENT OF MINES
 OIL AND GAS DIVISION
 CHARLESTON

WELL LOCATION MAP

FILE NO. MARS-402-R

+ DENOTES LOCATION OF WELL ON UNITED STATES TOPOGRAPHIC MAPS, SCALE 1 TO 62,500. LATITUDE AND LONGITUDE LINES BEING REPRESENTED BY BORDER LINES AS SHOWN.

- DENOTES ONE INCH SPACES ON BORDER LINE OF ORIGINAL TRACING.

803230



STATE OF WEST VIRGINIA
DEPARTMENT OF MINES
OIL AND GAS DIVISION

Quadrangle CAMERON
Permit No. MARS-402-R

WELL RECORD

STORAGE
Oil or Gas Well GAS
(KIND)

Company The Manufacturers Light and Heat Co.
Address 800 Union Trust Bldg., Pittsburgh 19, Pa.
Farm F. L. Reid Acres 100
Location (waters) _____
Well No. L-3147 Elev. 1200.12
District Liberty County Marshall
The surface of tract is owned in fee by _____
Address _____
Mineral rights are owned by _____
Address _____
Drilling commenced January 6, 1961
Drilling completed April 6, 1961
Date Shot 4/7/61 From BIG INJUN To SAND
With Orifice Well Tester


Casing and Tubing	Used in Drilling	Left in Well	Packers
Size			Kind of Packer
16			
13			
10 3/4"	188'	188'	Size of
8 5/8"	1039'	1347'	
7"	1972'	1972'	Depth set
5 3/16			
3			Perf. top
2			Perf. bottom
Liners Used			Perf. top
			Perf. bottom

Open Flow 0 /10ths Water in 1/4 Inch
/10ths Merc. in _____ Inch
Volume None Cu. Ft.
Rock Pressure 1 1/2 lbs. 72 hrs.
Oil _____ bbls., 1st 24 hrs.
Fresh water _____ feet
Salt water _____ feet

CASING CEMENTED _____ SIZE _____ No. Ft. _____ Date _____
COAL WAS ENCOUNTERED AT 840 FEET _____ INCHES
_____ FEET _____ INCHES FEET _____ INCHES
_____ FEET _____ INCHES FEET _____ INCHES

Formation	Color	Hard or Soft	Top	Bottom	Oil, Gas or Water	Depth Found	Remarks
		THICKNESS					
✓ Pittsburgh Coal		8	840	848			
✓ Lower Maxton Sand		8	1936	1944	1948		
✓ Big Lime			1948		1200		
✓ Big Injun Sand				2244	748		
7" casing set at				1972			
Plugged back to			2221				
TOTAL DEPTH				2221			
Run 1039' of new 8 5/8" casing on a steel shoe and set it on top of 308' of original 8" casing, left in hole, set at 1347'.							

Liberty District, Marshall County, W. Va.
By Manufacturers Light & Heat Co.
Completed March 17, 1927.
Record from Mr. Schillhahn Sept. 30, 1939.
Abandoned.



	Top.	Bottom.
Some water at 70'		
Pittsburgh Coal	812	848
Murphy Sand (some water at 1072')	1054	1079
Little Dunkard Sand	1240	1300
Big Dunkard Sand	1345	1385
Gas Sand	1550	1610
Salt Sand	1850	1905
Big Lime	1948	2005
Big Injun Sand? (gas, 2105')	1865	2900?
Total depth		2961