

COAL OWNED BY RECONDITION FOR STORAGE

NEW LOCATION...

DRILL DEEPER...

ABANDONMENT... *Sealed 6-4-69*

0-25-24

COMPANY THE MANUFACTURERS LIGHT & HEAT

ADDRESS 800 UNION TRUST BLDG. PCH. PA.

FARM CLEO. G. HOWARD

TRACT ACRES 200 LEASE No. 26570

WELL (FARM) No. 2 SERIAL No. 2806

ELEVATION (SPIRIT LEVEL) 1388.54'

QUADRANGLE CAMERON SW

COUNTY MARSHALL DISTRICT LIBERTY

ENGINEER Robert A. Hall

ENGINEER'S REGISTRATION No. 361-E (Clark)

FILE No. _____ DRAWING No. Y-25-239

DATE 3 NOV. 1960 SCALE 1" = 800'

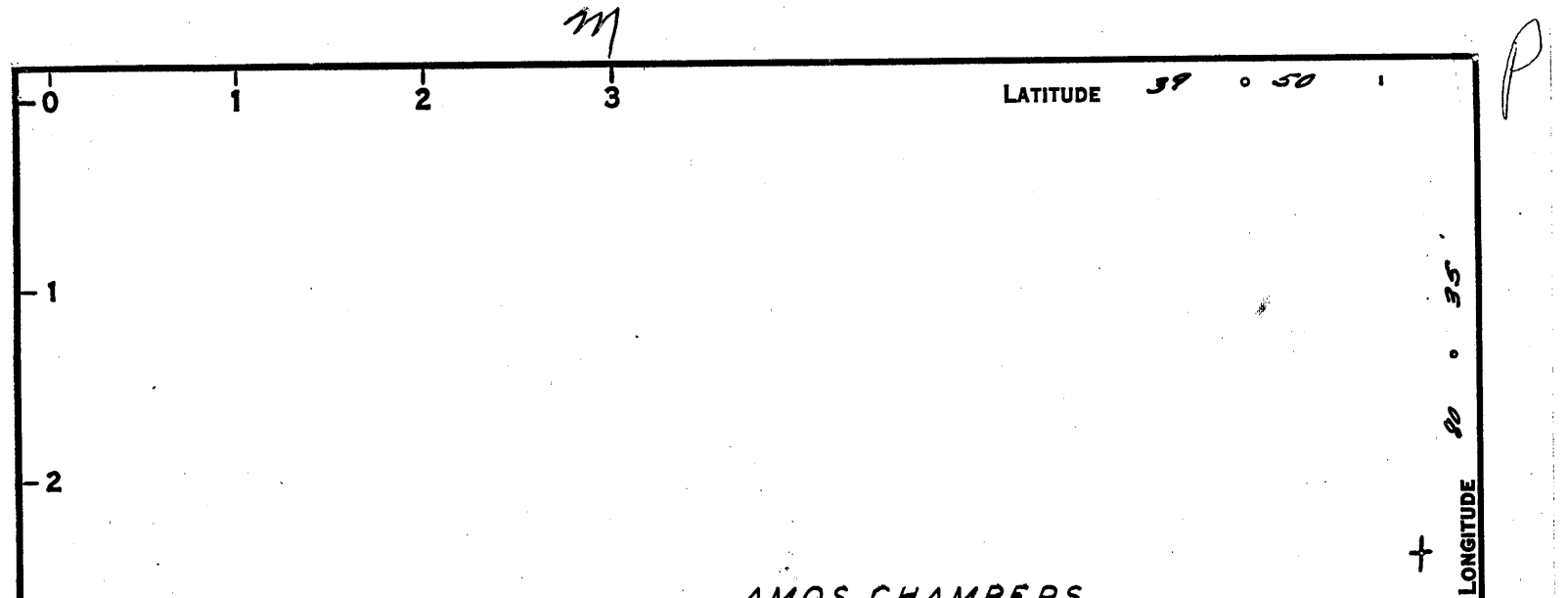
STATE OF WEST VIRGINIA
 DEPARTMENT OF MINES
 OIL AND GAS DIVISION
 CHARLESTON

WELL LOCATION MAP

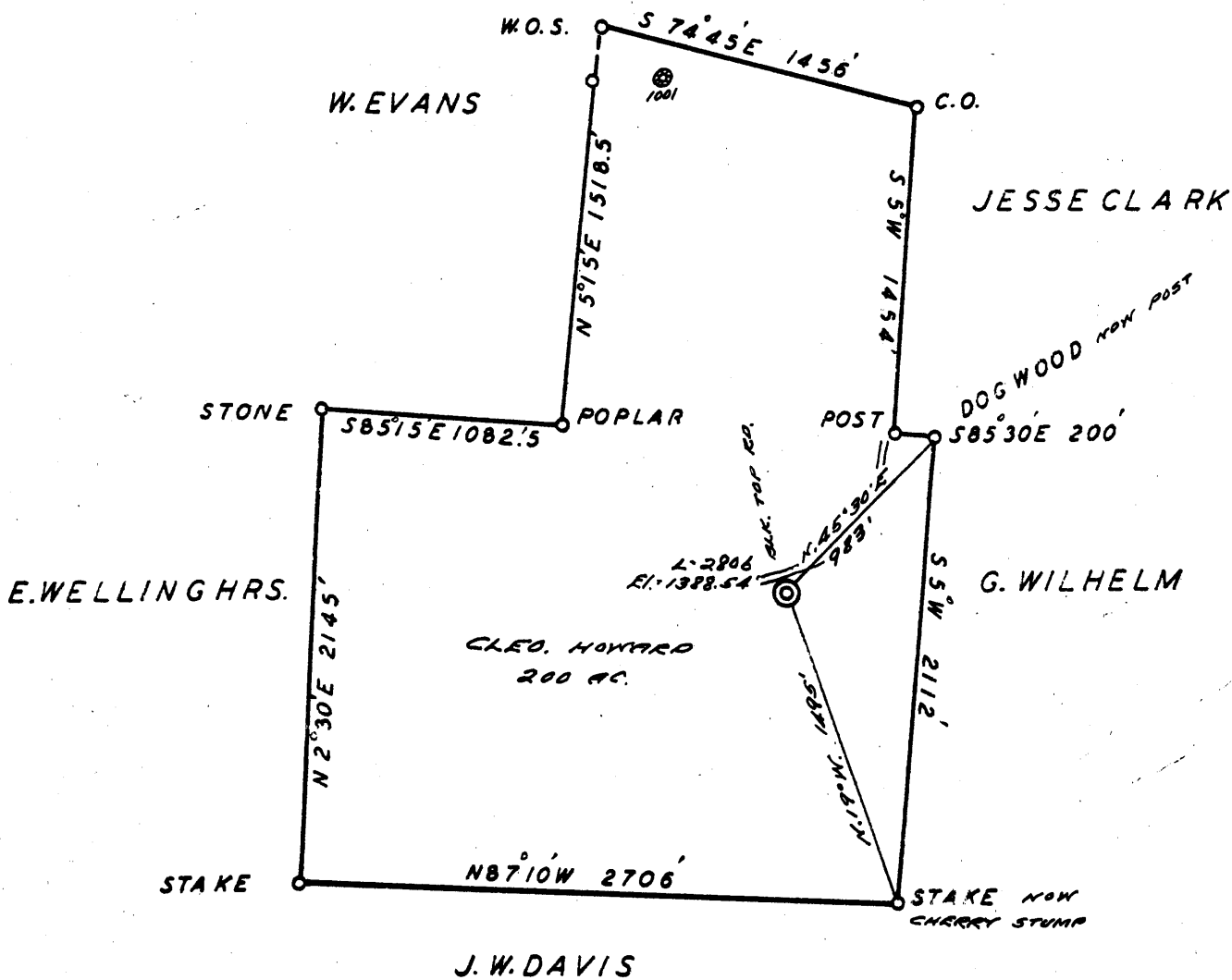
FILE No. MARS-399-R-P

+ DENOTES LOCATION OF WELL ON UNITED STATES TOPOGRAPHIC MAPS. SCALE 1 TO 62,500. LATITUDE AND LONGITUDE LINES BEING REPRESENTED BY BORDER LINES AS SHOWN.

- DENOTES ONE INCH SPACES ON BORDER LINE OF ORIGINAL TRACING.



AMOS CHAMBERS



COAL OWNED BY _____
 RECONDITION FOR STORAGE

NEW LOCATION.....

DRILL DEEPER.....

ABANDONMENT.....

0-25-24

COMPANY THE MANUFACTURERS LIGHT & HEAT

ADDRESS 800 UNION TRUST BLDG. PGH. PA.

FARM CLEO. G. HOWARD

TRACT _____ ACRES 200 LEASE No. 26570

WELL (FARM) No. 2 SERIAL No. 2806

ELEVATION (SPIRIT LEVEL) 1388.54'

QUADRANGLE CAMERON 5C

COUNTY MARSHALL DISTRICT LIBERTY

ENGINEER Robert A. Hall

ENGINEER'S REGISTRATION No. 361-E (Clark)

FILE No. _____ DRAWING No. Y-25-239

DATE 3 NOV. 1960 SCALE 1" = 200'

STATE OF WEST VIRGINIA
 DEPARTMENT OF MINES
 OIL AND GAS DIVISION
 CHARLESTON

WELL LOCATION MAP
 FILE No. MARS-399-R

+ DENOTES LOCATION OF WELL ON UNITED STATES TOPOGRAPHIC MAPS. SCALE 1 TO 62,500. LATITUDE AND LONGITUDE LINES BEING REPRESENTED BY BORDER LINES AS SHOWN.

- DENOTES ONE INCH SPACES ON BORDER LINE OF ORIGINAL TRACING.



STATE OF WEST VIRGINIA
DEPARTMENT OF MINES
OIL AND GAS DIVISION

Quadrangle CAMERON

Permit No. MARS-399-R

WELL RECORD

STORAGE
Oil or Gas Well GAS
(KIND)

Company The Manufacturers Light and Heat Co.
Address 800 Union Trust Bldg., Pittsburgh 19, Pa.
Farm Cleo G. Howard Acres 200
Location (waters) _____
Well No. L-2806 Elev. 1388.54'
District Liberty County Marshall
The surface of tract is owned in fee by _____
Address _____
Mineral rights are owned by _____
Address _____
Drilling commenced October 10, 1960
Drilling completed February 1, 1961
Date Shot _____ From _____ To _____
With _____

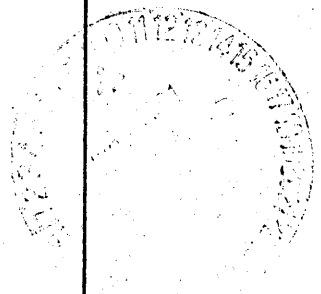
| Casing and Tubing | Used in Drilling | Left in Well | Packers |
|-------------------|------------------|--------------|----------------|
| Size | | | |
| 16 | | | Kind of Packer |
| 18 | | | |
| 10 3/4" | 281' | 281' | Size of |
| 8 1/4 5/8" | 1393' | 1393' | |
| 6 3/8 7" | 1784' | 2178' | Depth set |
| 5 3/16 | | | |
| 3 1/2 4 1/2" | 2205' | 2205' | Perf. top |
| 2 | | | Perf. bottom |
| Liners Used | | | Perf. top |
| | | | Perf. bottom |

Open Flow _____ /10ths Water in _____ Inch
_____ /10ths Merc. in _____ Inch
Volume _____ Cu. Ft.
Rock Pressure 0 lbs. 48 hrs.
Oil _____ bbls., 1st 24 hrs.
Fresh water _____ feet _____ feet
Salt water _____ feet _____ feet

CASING CEMENTED _____ SIZE _____ No. Ft. _____ Date _____

COAL WAS ENCOUNTERED AT 1052 FEET _____ INCHES
_____ FEET _____ INCHES _____ FEET _____ INCHES
_____ FEET _____ INCHES _____ FEET _____ INCHES

| Formation | Color | Hard or Soft - THICKNESS | Top | Bottom | Oil, Gas or Water | Depth Found | Remarks |
|----------------------|-------|--------------------------|------|--------|-------------------|-------------|---|
| ✓Pittsburgh Coal | | 7 | 1052 | 1059 | | | |
| ✓Big Dunkard Sand | | 44 | 1568 | 1612 | | | |
| ✓Maxton Sand | | 35 | 2080 | 2115 | | | |
| ✓Lower Maxton Sand | | 6 | 2152 | 2158 | | | |
| ✓Big Lime | | | 2162 | | | | |
| ✓Big Injun Sand | | | | 2455 | | | |
| Old 7" casing | | 394 | 1784 | 2178 | | | |
| 4 1/2" Tubing set at | | | | 2205 | | | |
| Total Depth | | | | 2420 | | | |
| | | | | | | | Run 1784' of new 7" casing on a steel shoe and set it on top of 394' of original 7" casing, left in the hole. |
| | | | | | | | Cut window in 7" Csg. from 2080-2090 using Section Mill by Servco. |





STATE OF WEST VIRGINIA
DEPARTMENT OF MINES
OIL AND GAS DIVISION

WELL RECORD

Quadrangle _____

Permit No. MARS-399-R

Oil or Gas Well GAS
(KIND)

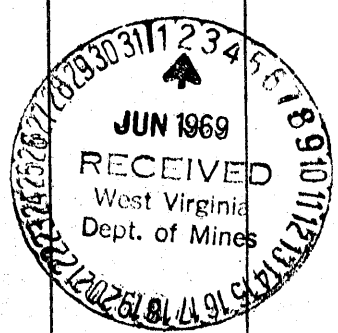
Company The Manufacturers Light and Heat Co.
Address 800 Union Trust Bldg., Pittsburgh 19, Pa.
Farm Cleo G. Howard Acres 200
Location (waters) _____
Well No. L-2806 Elev. 1388.54'
District Liberty County Marshall
The surface of tract is owned in fee by _____
Address _____
Mineral rights are owned by _____
Address _____
Drilling commenced October 10, 1960
Drilling completed February 1, 1961
Date Shot _____ From _____ To _____
With _____

| Casing and Tubing | Used in Drilling | Left in Well | Packers |
|-------------------|------------------|--------------|--------------------|
| Size | | | Kind of Packer |
| 16 | | | |
| 13 | | | |
| 10 <u>3/4"</u> | <u>281'</u> | <u>281'</u> | Size of _____ |
| 8 <u>5/8"</u> | <u>1393'</u> | <u>1393'</u> | Depth set _____ |
| 7 <u>7"</u> | <u>1784'</u> | <u>2178'</u> | |
| 5 <u>3/16"</u> | | | Perf. top _____ |
| 4 <u>1/2"</u> | <u>2205'</u> | <u>2205'</u> | Perf. bottom _____ |
| 2 | | | Perf. top _____ |
| Liners Used | | | Perf. bottom _____ |

Open Flow _____ /10ths Water in _____ Inch
_____ /10ths Merc. in _____ Inch
Volume _____ Cu. Ft.
Rock Pressure 0 lbs. 48 hrs.
Oil _____ bbls., 1st 24 hrs.
Fresh water _____ feet
Salt water _____ feet

CASING CEMENTED _____ SIZE _____ No. Ft. _____ Date _____
COAL WAS ENCOUNTERED AT 1052 FEET _____ INCHES
_____ FEET _____ INCHES FEET _____ INCHES
_____ FEET _____ INCHES FEET _____ INCHES

| Formation | Color | Hard or Soft THICKNESS | Top | Bottom | Oil, Gas or Water | Depth Found | Remarks |
|----------------------|-------|---------------------------|------|--------|---|-------------|---------|
| Pittsburgh Coal | | 7 | 1052 | 1059 | | | |
| Big Dunkard Sand | | 44 | 1568 | 1612 | | | |
| Maxton Sand | | 35 | 2080 | 2115 | 2162 | | |
| Lower Maxton Sand | | 6 | 2152 | 2158 | 1389 | | |
| Big Lime | | | 2162 | | 773 | | |
| Big Injun Sand | | | | 2455 | | | |
| Old 7" casing | | 394 | 1784 | 2178 | | | |
| 4 1/2" Tubing set at | | | | 2205 | | | |
| Total Depth | | | | 2420 | | | |
| | | | | | Run 1784' of new 7" casing on a steel shoe and set it on top of 394' of original 7" casing, left in the hole. | | |
| | | | | | Cut window in 7" Csg. from 2080-2090 using Section Mill by Servco. | | |



Liberty District, Marshall County, W. Va.
Manufacturers Light & Heat Co., 800 Union Tr. Bldg., Pittsburgh, Pa.
On 200 acres, surface owned by R. A. McConaughey, Cameron, W. Va.,
and mineral rights by ML&H Co., Pittsburgh, Pa.

Drilled prior to June 1, 1929.

Elevation, 1382'.

10" casing, 291'; 8 1/4", 1558'; 6-5/8", 2180'.

Coal was encountered at 770-775, 955-960, and 1055-1062'.

Abandonment reported to Dept. of Mines August 23, 1932.

MARS
399

MARS-24-A

| | Top. | Bottom. |
|-------------------------------------|------|---------|
| Waynesburg Coal | 770 | - 775 |
| Mapletown Coal | 955 | - 960 |
| Pittsburgh Coal | 1055 | - 1062 |
| Sand (gas at 1166') | 1159 | - 1189 |
| Sand | 1265 | - 1275 |
| Sand | 1405 | - 1420 |
| Big Dunkard Sand | 1558 | - 1600 |
| Sand (3 bailers water at 1755') | 1690 | - 1760 |
| Sand | 1900 | - 1920 |
| Sand | 2085 | - 2135 |
| Big Lime | 2155 | - 2210 |
| Big Injun Sand | 2210 | - 2470 |
| Sand | 2840 | - 2855 |
| Sand | 2870 | - 2880 |
| 50-Ft. ? Sand, broken | 3006 | - 3030 |
| Gordon Sand (gas at 3063 and 3071') | 3061 | - 3093 |
| 5th ? Sand | 3133 | - 3141 |
| Total depth | | 3244 |