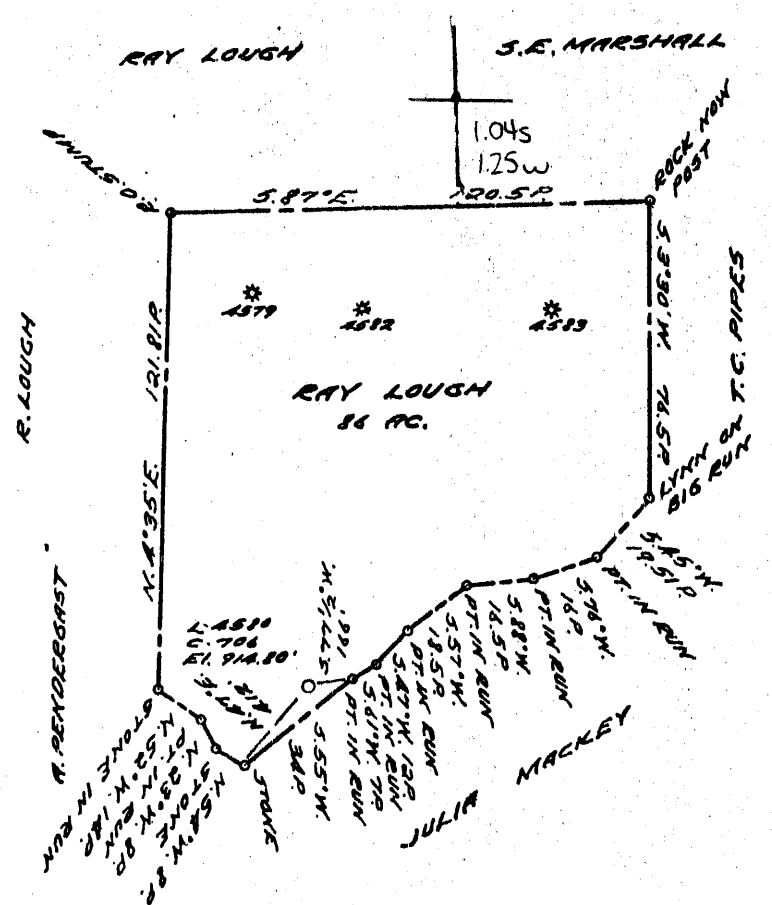


0 1 2 3 LATITUDE 39 0 50 1
39° 47' 30"

1
2
3 LONGITUDE 80 35'



COAL OWNED BY _____
RECONDITION

NEW LOCATION...
 DRILL DEEPER...
 ABANDONMENT... - *Issued 7-13-70*

0-25-21

COMPANY THE MANUFACTURERS LIGHT & HEAT
 ADDRESS 800 UNION TRUST BLDG. RICH. PA.
 FARM RAY LOUGH
 TRACT _____ ACRES 86 LEASE No. 21425
 WELL (FARM) No. 2 SERIAL No. 1510
 ELEVATION (SPIRIT LEVEL) 914.80'
 QUADRANGLE CAMERON SC
 COUNTY MARSHALL DISTRICT LIBERTY
 ENGINEER Robert McNeill
 ENGINEER'S REGISTRATION No. 361-E (J.F.)
 FILE No. _____ DRAWING No. Y-25-170
 DATE 6 MAY 1960 SCALE 1" = 800'

STATE OF WEST VIRGINIA
 DEPARTMENT OF MINES
 OIL AND GAS DIVISION
 CHARLESTON

WELL LOCATION MAP

FILE No. MARS-387-R-P

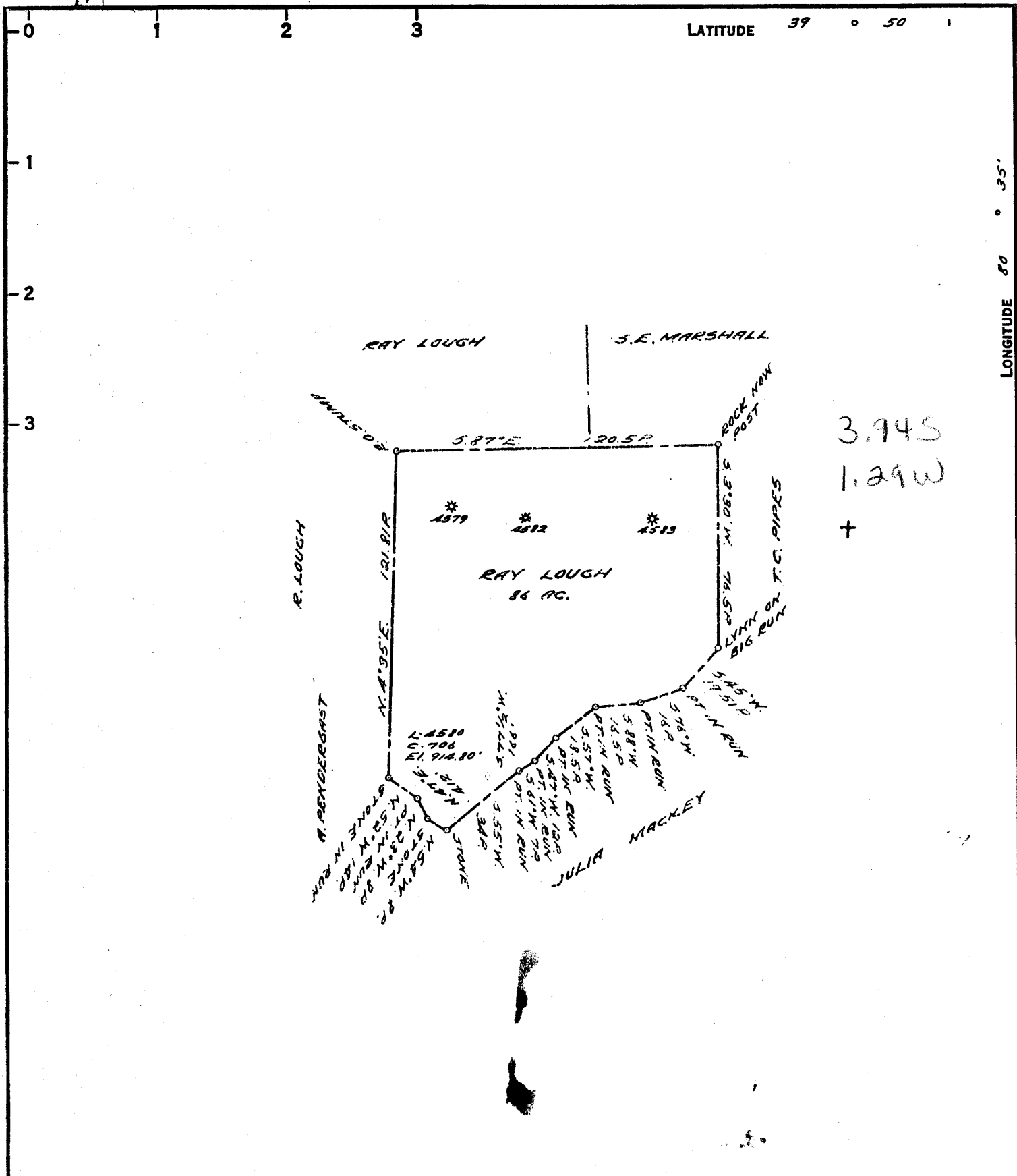
+ DENOTES LOCATION OF WELL ON UNITED STATES TOPOGRAPHIC MAPS, SCALE 1 TO 62,500, LATITUDE AND LONGITUDE LINES BEING REPRESENTED BY BORDER LINES AS SHOWN.

- DENOTES ONE INCH SPACES ON BORDER LINE OF ORIGINAL TRACING.

9-0 25

JUL 19 1970

M



3.945
1.29W
+

COAL OWNED BY _____
RECONDITION

NEW LOCATION...

DRILL DEEPER...

ABANDONMENT...

0-25-21

COMPANY THE MANUFACTURERS LIGHT & HEAT

ADDRESS 800 UNION TRUST BLDG. PSH. PD.

FARM RAY LOUGH

TRACT _____ ACRES 86 LEASE NO. 21425

WELL (FARM) No. 2 SERIAL No. 4580

ELEVATION (SPIRIT LEVEL) 914.80'

QUADRANGLE CAMERON SC

COUNTY MARSHALL DISTRICT LIBERTY

ENGINEER Robert M. Heill

ENGINEER'S REGISTRATION No. 361-E (J.F.)

FILE No. _____ DRAWING No. Y-25-170

DATE 6 MAY 1960 SCALE 1" = 800'

STATE OF WEST VIRGINIA
DEPARTMENT OF MINES
OIL AND GAS DIVISION
CHARLESTON

WELL LOCATION MAP

File No. MARS-387-R

+ DENOTES LOCATION OF WELL ON UNITED STATES TOPOGRAPHIC MAPS. SCALE 1 TO 62,500. LATITUDE AND LONGITUDE LINES BEING REPRESENTED BY BORDER LINES AS SHOWN.

- DENOTES ONE INCH SPACES ON BORDER LINE OF ORIGINAL TRACING.



STATE OF WEST VIRGINIA
DEPARTMENT OF MINES
OIL AND GAS DIVISION

Quadrangle Cameron

Permit No. MARS-387-R

WELL RECORD

Oil or Gas Well Gas
(KIND)

Company The Manufacturers Light and Heat Co.
Address 800 Union Trust Bldg., Pittsburgh 19, Pa.
Farm Ray Lough, et ux Acres 86
Location (waters) _____
Well No. L-4580 Elev. 914.80'
District Liberty County Marshall
The surface of tract is owned in fee by _____
Address _____
Mineral rights are owned by _____
Address _____
Drilling commenced April 18, 1960
Drilling completed May 31, 1960
Date Shot 6/9/60 From 1670' To 1680'
With Orifice Well Tester
Open Flow 3/10ths Water in 1/4 Inch
/10ths Merc. in _____ Inch
Volume 966,000 - 9 days Cu. Ft.
Rock Pressure 15 lbs. 120 hrs.
Oil _____ bbls., 1st 24 hrs.
Fresh water _____ feet _____ feet
Salt water _____ feet _____ feet

Casing and Tubing	Used in Drilling	Left in Well	Packers
Size			
16			Kind of Packer
18			
10 3/4"	143'	143'	Size of
8 5/8"	991'	991'	
6 7/8"	1696'	1696'	Depth set
5 8/16"			
8			Perf. top
2			Perf. bottom
Liners Used			Perf. top
			Perf. bottom

CASING CEMENTED _____ SIZE _____ No. Ft. _____ Date _____
COAL WAS ENCOUNTERED AT 608 FEET _____ INCHES
_____ FEET _____ INCHES _____ FEET _____ INCHES
_____ FEET _____ INCHES _____ FEET _____ INCHES

Formation	Color	Hard or Soft	Top	Bottom	Oil, Gas or Water	Depth Found	Remarks
		THICKNESS					
Pittsburgh Coal		6	608	614			
Big Dunkard		77	1073	1150	1690		
Lower Maxton Sand		12	1674	1686	915		
Big Lime			1690		775		
Big Injun Sand				2004			
Set 7" Shoe				1696			
Plug back to				1694			
Perforate 7" casing		16	1670	1686			

