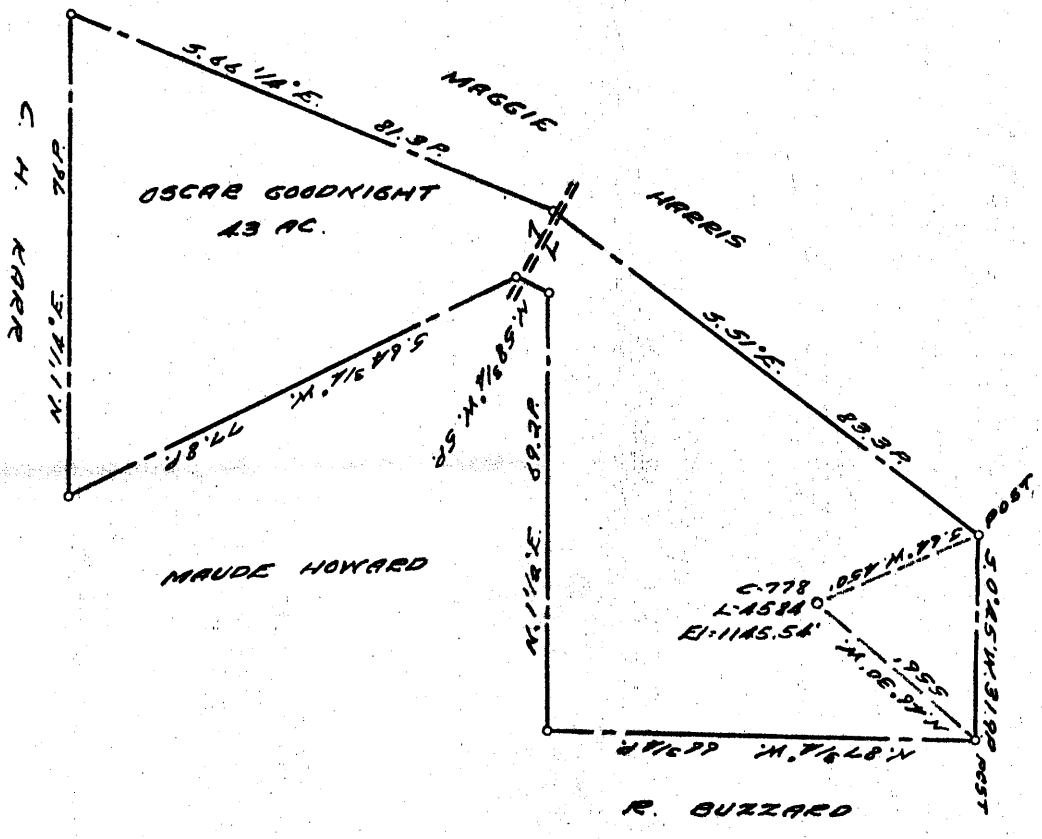


LATITUDE $39^{\circ} 47' 30''$
 .21s
 .68w

LONGITUDE $80^{\circ} 35'$

3.06 S
 0.69 W +



COAL OWNED BY RECONSTRUCTION

NEW LOCATION...

DRILL DEEPER...

ABANDONMENT... *issued 8-1-69*

30023

0-25-29

COMPANY THE MANUFACTURERS LIGHT & HEAT

ADDRESS 800 UNION TRUST BLDG. PGH. PA.

FARM OSCAR GOODNIGHT Maggie Harris

TRACT ACRES 43 LEASE No. 30506

WELL (FARM) No. SERIAL No. 4584

ELEVATION (SPIRIT LEVEL) 1145.54'

QUADRANGLE CAMERON 3C

COUNTY MARSHALL DISTRICT LIBERTY

ENGINEER Robert M. Sheell (J.E.)

ENGINEER'S REGISTRATION No. 361-E

FILE No. DRAWING No. Y-25-109

DATE 15 MAR 1960 SCALE 1" = 500'

STATE OF WEST VIRGINIA
 DEPARTMENT OF MINES
 OIL AND GAS DIVISION
 CHARLESTON

WELL LOCATION MAP

FILE No. MARS-375-Storage-P

+ DENOTES LOCATION OF WELL ON UNITED STATES TOPOGRAPHIC MAPS, SCALE 1 TO 62,500. LATITUDE AND LONGITUDE LINES BEING REPRESENTED BY BORDER LINES AS SHOWN.

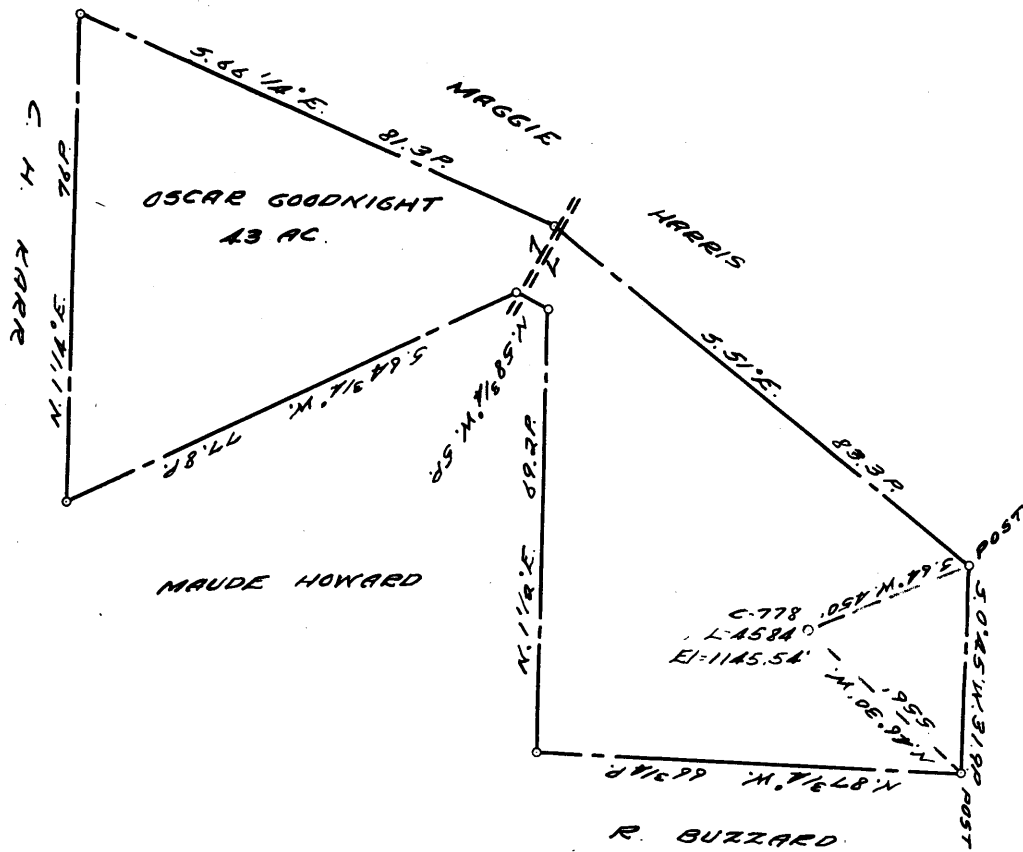
- DENOTES ONE INCH SPACES ON BORDER LINE OF ORIGINAL TRACING.

9-0-25

AUG 20 1969

LATITUDE 39 ° 50 ' 1

LONGITUDE 80 ° 35 ' 2



COAL OWNED BY _____
 RECONDITION _____

NEW LOCATION.....

DRILL DEEPER.....

ABANDONMENT.....

0-25-29

COMPANY THE MANUFACTURERS LIGHT & HEAT

ADDRESS 800 UNION TRUST BLDG. PGH. PA.

FARM OSCAR GOODNIGHT

TRACT _____ ACRES 43 LEASE No. 30506

WELL (FARM) No. _____ SERIAL No. 4584

ELEVATION (SPIRIT LEVEL) 1145.54'

QUADRANGLE CAMERON - SC

COUNTY MARSHALL DISTRICT LIBERTY

ENGINEER Robert M. Heell (J.F.)

ENGINEER'S REGISTRATION No. 361-E

FILE No. _____ DRAWING No. Y-25-109

DATE 15 MAR. 1960 SCALE 1" = 500'

STATE OF WEST VIRGINIA
 DEPARTMENT OF MINES
 OIL AND GAS DIVISION
 CHARLESTON

WELL LOCATION MAP

FILE No. MARS-375-storage

+ DENOTES LOCATION OF WELL ON UNITED STATES TOPOGRAPHIC MAPS. SCALE 1 TO 62,500. LATITUDE AND LONGITUDE LINES BEING REPRESENTED BY BORDER LINES AS SHOWN.

- DENOTES ONE INCH SPACES ON BORDER LINE OF ORIGINAL TRACING.



STATE OF WEST VIRGINIA
DEPARTMENT OF MINES
OIL AND GAS DIVISION

Quadrangle CAMERON

Permit No. MARS-375-R

WELL RECORD

Oil or Gas Well Storage GAS
(KIND)

Company <u>The Manufacturers Light and Heat Co.</u>	Casing and Tubing	Used in Drilling	Left in Well	Packers
Address <u>800 Union Trust Bldg., Pittsburgh 19, Pa.</u>	Size			
Farm <u>Oscar Goodnight (Maggie Harris) 43 Acres</u>	16			Kind of Packer
Location (waters)	13			
Well No. <u>L-4584</u> Elev. <u>1145.54'</u>	10 <u>3/4"</u>	<u>195'</u>	<u>195'</u>	Size of
District <u>Liberty</u> County <u>Marshall</u>	<u>8 1/2 5/8"</u>	<u>1037'</u>	<u>1037'</u>	Depth set
The surface of tract is owned in fee by	<u>6 1/2 7"</u>	<u>1155'</u>	<u>1931'</u>	
Address	<u>5 3/16</u>			
Mineral rights are owned by	<u>4 1/2"</u>	<u>1972'</u>	<u>1972'</u>	Perf. top
Address	<u>2</u>			Perf. bottom
Drilling commenced <u>May 25, 1960</u>	Liners Used			Perf. top
Drilling completed <u>February 25, 1961</u>				Perf. bottom
Date Shot From To				
With				
Open Flow /10ths Water in Inch				
/10ths Merc. in Inch				
Volume - Cu. Ft.				
Rock Pressure <u>1</u> lbs. <u>48</u> hrs.				
Oil bbls., 1st 24 hrs.				
Fresh water feet				
Salt water feet				
	CASING CEMENTED	SIZE	No. Ft.	Date
	COAL WAS ENCOUNTERED AT	<u>810</u> FEET	INCHES	
		FEET	INCHES	FEET
		FEET	INCHES	FEET

Formation	Color	Hard or Soft	Top	Bottom	Oil, Gas or Water	Depth Found	Remarks
		THICKNESS					
Pittsburgh Coal		7	810	817			
Murphy Sand		14	1036	1050			
Big Dunkard Sand		22	1306	1328			
Maxton Sand		12	1810	1822			
Lower Maxton Sand		19	1900	1919			
Big Lime			1921				
Big Injun Sand				2227			
Old 7" Casing		776	1155	1931			
Plug back to				2220			
Set 4 1/2" Tubing				1972			
Total Depth				2220			
Run 1155 Ft. of new 7" casing on a steel shoe and set it on top of 776 Ft. of original 7" casing, left in hole.							
Cut window in 7" casing from 1814-1824 using Servco Section Mill.							

OMAR HOWARD NO. 778 WELL.

Liberty District, Marshall County, W. Va.

By Carnegie Natural Gas Co.

Cameron SE Quadrangle.

On 43 acres; lease No. 9839.

Drilling commenced May 31, 1918; completed, July 5, 1918.

No elevation.

345,000 cu. ft. gas at 2831-38'; 250# R. P. (Gordon).

Drilled deeper from 2848', April 27, 1932. Dry on deepening.

Abandoned July 13, 1932.

Shot with 24 qts. at 2830-39', May 22, 1923.

Shot with 20 qts., 2830-40', Jan. 28, 1927.

Record from Wilcox 10-15-39.

	Top.	Bottom.
(Water at 90')		
Mapletown (Sewickley) Coal	720	- 726
Pittsburgh Coal	814	- 822
Murphy Sand (hole full water at 1043')	1036	- 1050
Little Dunkard Sand (MOUNDSVILLE)	1120	- 1140
Big Dunkard Sand	1310	- 1365
1st Gas Sand (show gas, 1470')	1465	- 1515
1st Salt Sand	1622	- 1665
2nd Salt Sand (show gas, 1745')	1735	- 1780
Maxton Sand (show gas, 1900')	1865	- 1935
Pencil Cave	1935	- 1937
Big Lime	1937	- 1976
Big Injun Sand	1976	- 2250
Gordon Sand (oil and gas at 2831-38'; 345,000 cu. ft. gas; 260# R. P.)	2824	- 2848
DRILLED DEEPER from 2848', 4-27-32:		
Total depth (dry on deepening)		2922

375

Liberty District, Marshall County, W. Va.
 Carnegie Natural Gas Co., Pittsburgh, Pa.
 On 43 acres, surface and mineral rights owned by Omar Howard,
 R. D., Cameron, W. Va.

Elevation, 1125' B.
 13" conductor, 16'; 10" casing, 207' (pulled); 8 1/2", 1052';
 6-5/8", 1942'.

Coal was encountered at 706-712 and 814-822'.
 Abandonment reported to Dept. of Mines June 1, 1932.
 Well was shot at 2830-2840'.

MARS-23-A

	Top.	Bottom.
Conductor	0	16
(water at 90')		
Mapletown Coal	720	726
Pittsburgh Coal	814	822
Murphy Sand (water, 1043')	1036	1050
Little Dunkard Sand	1120	1140
Big Dunkard Sand	1310	1365
Gas Sand (gas, 1470')	1465	1515
1st Salt Sand	1622	1665
2nd Salt Sand (gas, 1745')	1735	1780
sat Maxton Sand (gas, 1900')	1865	1935
Pencil Cave	1935	1937
Big Lime	1937	1976
Big Injun Sand	1976	2250
Gordon Sand (oil and gas at 2831-2838')	2824	2848
4th Sand	2890	2896
Total depth		2922