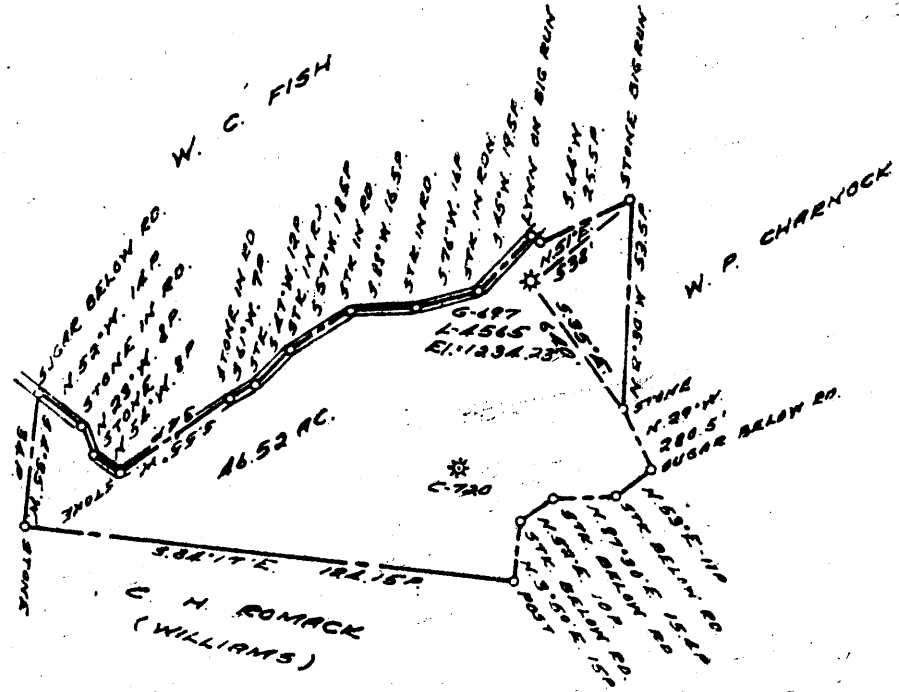


LATITUDE 39° 50' 39.4730"

LONGITUDE 80° 35'

+  
.91 S  
.91 W

3.85 S  
0.91 W  
+



COAL OWNED BY \_\_\_\_\_  
 RECONDITION \_\_\_\_\_  
 NEW LOCATION   
 DRILL DEEPER   
 ABANDONMENT

70109

0-25-28

COMPANY THE MANUFACTURERS LIGHT & HEAT  
 ADDRESS 800 UNION TRUST BLDG. PCH. W.  
 FARM JULIA MERRY  
 TRACT \_\_\_\_\_ ACRES 50 LEASE No. 2655  
 WELL (FARM) No. 2 SERIAL No. 1565  
 ELEVATION (SPIRIT LEVEL) 1234.23'  
 QUADRANGLE CAMERON - SC  
 COUNTY MARSHALL DISTRICT LIBERTY  
 ENGINEER Robert M. Heill (G.E.A.)  
 ENGINEER'S REGISTRATION No. 361-E  
 FILE No. \_\_\_\_\_ DRAWING No. Y-25-36  
 DATE 2 NOV. 59 SCALE 1" = 800

STATE OF WEST VIRGINIA  
 DEPARTMENT OF MINES  
 OIL AND GAS DIVISION  
 CHARLESTON  
**WELL LOCATION MAP**  
 FILE No. T.M.S. 367-Redrill

+ DENOTES LOCATION OF WELL ON UNITED STATES TOPOGRAPHIC MAPS. SCALE 1 TO 62,500. LATITUDE AND LONGITUDE LINES BEING REPRESENTED BY BORDER LINES AS SHOWN.  
 - DENOTES ONE INCH SPACES ON BORDER LINE OF ORIGINAL TRACING.

9-0 25



STATE OF WEST VIRGINIA  
DEPARTMENT OF MINES  
OIL AND GAS DIVISION

Quadrangle Cammeron

WELL RECORD

Storage

Permit No. MARS-367-R

Oil or Gas Well GAS  
(KIND)

Company The Manufacturers Light and Heat Company  
Address 800 Union Trust Building  
Farm Julia Mackey Acres 50  
Location (waters) \_\_\_\_\_  
Well No. L-4565 Elev. 1234.23'  
District Liberty County Marshall  
The surface of tract is owned in fee by \_\_\_\_\_  
Address \_\_\_\_\_  
Mineral rights are owned by Julia Mackey  
Address \_\_\_\_\_  
Drilling commenced November 6, 1959  
Drilling completed April 7, 1960  
Date Shot 4/21/60 From 1710' To 1730'  
With Orifice Well Tester  
Open Flow 3 /10ths Water in 1/4 Inch  
\_\_\_\_\_ /10ths Merc. in \_\_\_\_\_ Inch  
Volume 966,000 Cu. Ft.  
Rock Pressure 20 lbs. 4 days \_\_\_\_\_ hrs.  
Oil \_\_\_\_\_ bbls., 1st 24 hrs.  
Fresh water \_\_\_\_\_ feet \_\_\_\_\_ feet  
Salt water \_\_\_\_\_ feet \_\_\_\_\_ feet

Casing and Tubing	Used in Drilling	Left in Well	Packers
Size			
16			Kind of Packer
13			
10 3/4"	145'	145'	Size of
8 5/8"	914'	914'	
7"	1704'	1730'	Depth set
5 3/16			
3			Perf. top
2			Perf. bottom
Liners Used			Perf. top
			Perf. bottom

CASING CEMENTED	SIZE	SIZE	SIZE
LBS.	No. Ft.	No. Ft.	No. Ft.
100	8"	750	7"
			700

COAL WAS ENCOUNTERED AT 628 FEET \_\_\_\_\_ INCHES  
\_\_\_\_\_ FEET \_\_\_\_\_ INCHES \_\_\_\_\_ FEET \_\_\_\_\_ INCHES  
\_\_\_\_\_ FEET \_\_\_\_\_ INCHES \_\_\_\_\_ FEET \_\_\_\_\_ INCHES

Formation	Color	Thick/ Feet	Top	Bottom	Oil, Gas or Water	Depth Found	Remarks
Pittsburgh Coal		7	628	635			
Big Dunkard Sand		98	1112	1210			
Maxton Sand		21	1669	1690			
Lower Maxton Sand		22	1711	1733			
Big Lime			1768				
Big Injun				2025			
Old 7" casing		24	1706	1730			
FINAL DEPTH				1750			
7" Shoe set at				1704			
Perforated old 7"		20	1710	1730			

JOHN H. MACKAY NO. 697 WELL.

367

Liberty District, Marshall County, W. Va.  
 By Carnegie Natural Gas Co.  
 Cameron SE Quadrangle.  
 On 50 acres; lease No. 9803.  
 Drilling commenced Oct. 20, 1916; completed, Jan. 2, 1917.  
 No elevation. DEEPENED from 1723', March 8, 1919.  
 10,000,000 cu. ft. gas in Maxton; 650# R. P.  
 2,200,000 cu. ft. gas in Gordon and Fourth Sands; 285# R. P.  
 Abandoned Nov. 26, 1926.  
 Record from Wilcox 10-15-39.

	Top.	Bottom.
(30 bailers water per hour at 20')		
Mapletown (Sewickley) Coal	531	- 536
Pittsburgh Coal	629	- 636
Murphy Sand (MINSHALL)	733	- 785
Lime (25,000 cu. ft. gas at 1113')	1103	- 1113
Big Dunkard Sand (show oil, 1138')	1113	- 1158
Limy sand	....	- 1580
Maxton Sand (10,000,000 cu. ft. gas at 1702 and 1716-22') (650# R.P.)	1702	- ....
Total depth		1723
DEEPENED from 1723', 3-8-19:		
Big Injun Sand	....	- 2045
Gordon Sand (gas at 2639-42')	2628	- 2663
4th Sand (gas at 2697-2700')	2697	- 2701
(total gas in Gordon and Fourth, 2,200,000 cu. ft.; 285# R. P.)		
Total depth		2706

1723  
 983