

M

P

LATITUDE 39 ° 50 ' 1

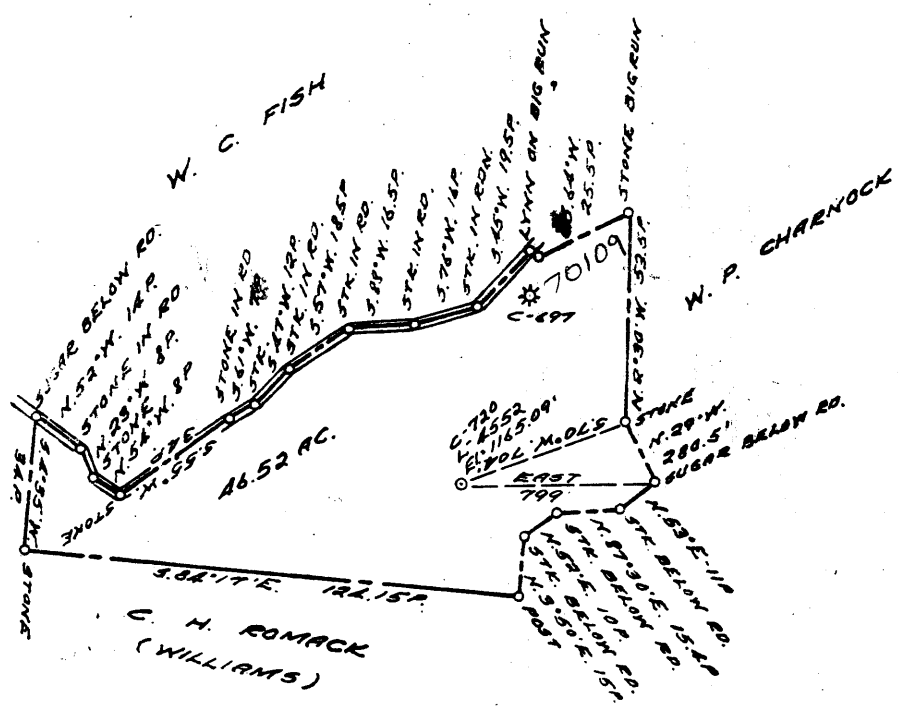
39°47'30"

LONGITUDE 80 ° 35'

0 1 2 3  
1  
2  
3

1.055  
1.17w

3.73 S  
0.99 W  
+



COAL OWNED BY \_\_\_\_\_  
 RECONITION   
 NEW LOCATION.....   
 DRILL DEEPER.....   
 ABANDONMENT.....

0-25-28

COMPANY THE MANUFACTURERS LIGHT & HEAT  
 ADDRESS 800 UNION TRUST BLDG. PGM. PA.  
 FARM J. H. MACKAY  
 TRACT \_\_\_\_\_ ACRES 50 LEASE No. 26555  
 WELL (FARM) No. 1 SERIAL No. 4582  
 ELEVATION (SPIRIT LEVEL) 1165.09  
 QUADRANGLE CAMERON - SC  
 COUNTY MARSHALL DISTRICT LIBERTY  
 ENGINEER Robert M. Heall  
 ENGINEER'S REGISTRATION No. 361 E (G.E.A.)  
 FILE No. \_\_\_\_\_ DRAWING No. Y-15-991  
 DATE 9 JULY 59 SCALE 1" = 800'

STATE OF WEST VIRGINIA  
 DEPARTMENT OF MINES  
 OIL AND GAS DIVISION  
 CHARLESTON

### WELL LOCATION MAP

FILE No. MARS-361-R  
(Storage)

+ DENOTES LOCATION OF WELL ON UNITED STATES TOPO-  
 GRAPHIC MAPS, SCALE 1 TO 62,500. LATITUDE AND LONGITUDE  
 LINES BEING REPRESENTED BY BORDER LINES AS SHOWN.  
 - DENOTES ONE INCH SPACES ON BORDER LINE OF ORIGINAL  
 TRACING.

9-0 25



STATE OF WEST VIRGINIA  
DEPARTMENT OF MINES  
OIL AND GAS DIVISION

Quadrangle Cammaron

WELL RECORD

Permit No. MARS-361-R

Oil or Gas Well GAS  
(KIND)

Company The Manufacturers Light and Heat Co.  
Address 800 Union Trust Bldg., Pittsburgh 19, Pa.  
Farm Julia Mackey Acres 50  
Location (waters) \_\_\_\_\_  
Well No. L-4552 Elev. 1165.09'  
District Liberty County Marshall  
The surface of tract is owned in fee by \_\_\_\_\_  
Address \_\_\_\_\_  
Mineral rights are owned by \_\_\_\_\_  
Address \_\_\_\_\_  
Drilling commenced \_\_\_\_\_  
Drilling completed October 30, 1959  
Date Shot \_\_\_\_\_ From \_\_\_\_\_ To \_\_\_\_\_  
With \_\_\_\_\_  
Open Flow /10ths Water in \_\_\_\_\_ Inch  
/10ths Merc. in \_\_\_\_\_ Inch  
Volume \_\_\_\_\_ Cu. Ft.  
Rock Pressure \_\_\_\_\_ lbs. \_\_\_\_\_ hrs.  
Oil \_\_\_\_\_ bbls., 1st 24 hrs.  
Fresh water \_\_\_\_\_ feet \_\_\_\_\_ feet  
Salt water \_\_\_\_\_ feet \_\_\_\_\_ feet

Casing and Pa. Tubing	Used in Drilling	Left in Well	Packers
Size			Kind of Packer
16			
18			
10 3/4"	239	239	Size of
8 5/8"	1080	1080	
6 7/8"	1972	1972	Depth set
5 3/16			
3			Perf. top
2			Perf. bottom
Liners Used			Perf. top
			Perf. bottom

CASING CEMENTED \_\_\_\_\_ SIZE \_\_\_\_\_ No. Ft. \_\_\_\_\_ Date \_\_\_\_\_

COAL WAS ENCOUNTERED AT \_\_\_\_\_ FEET \_\_\_\_\_ INCHES  
\_\_\_\_\_ FEET \_\_\_\_\_ INCHES \_\_\_\_\_ FEET \_\_\_\_\_ INCHES  
\_\_\_\_\_ FEET \_\_\_\_\_ INCHES \_\_\_\_\_ FEET \_\_\_\_\_ INCHES

Formation	Color	Thick/ Thin/ Bott	Top	Bottom	Oil, Gas or Water	Depth Found	Remarks
✓Pittsburgh Coal		7	846	853			
✓Big Dunkard Sand		27	1375	1402			
Big Lime			1938		1938		
✓Big Injun Sand				2210	1165		
TOTAL DEPTH				2210	773		