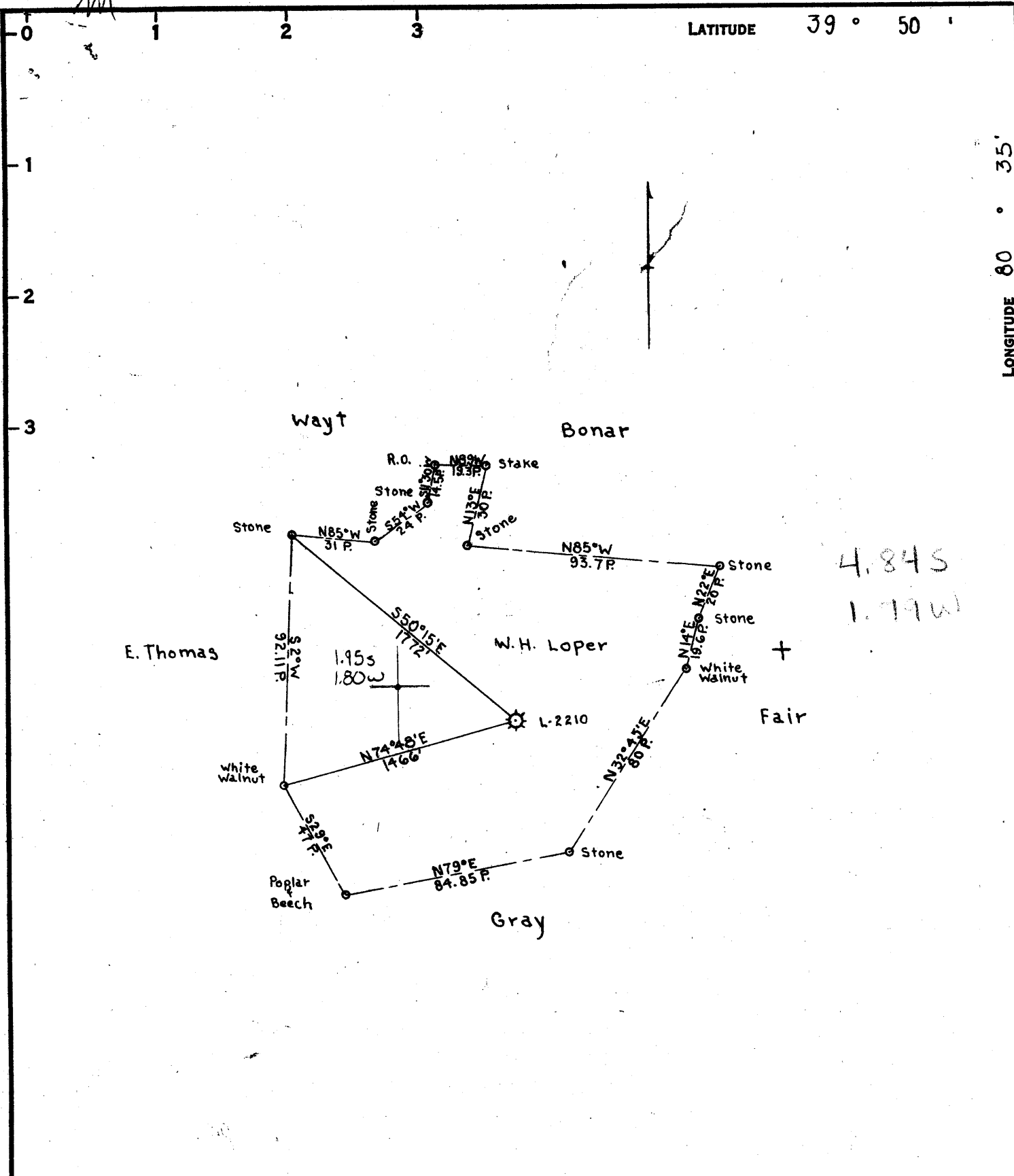


39°47'30"

LATITUDE 39° 50'

LONGITUDE 80° 35'



COAL OWNED BY _____
 NEW LOCATION
 DRILL DEEPER
 ABANDONMENT

025-28

COMPANY The Manufacturers Light & Heat Co.
 ADDRESS Pittsburgh, Penna.
 FARM W.H. Loper
 TRACT _____ ACRES 104 LEASE No. 4736
 WELL (FARM) No. 1 SERIAL No. L-2210
 ELEVATION (SPIRIT LEVEL) 1220'
 QUADRANGLE Cameron SC
 COUNTY Marshall DISTRICT Liberty
 ENGINEER Robert M. Afill (J.E.)
 ENGINEER'S REGISTRATION No. 361-E
 FILE No. _____ DRAWING No. Y-15-864
 DATE 5-12-58 SCALE 1" = 800'

STATE OF WEST VIRGINIA
 DEPARTMENT OF MINES
 OIL AND GAS DIVISION
 CHARLESTON

WELL LOCATION MAP

FILE No. MARS-344-D

+ DENOTES LOCATION OF WELL ON UNITED STATES TOPOGRAPHIC MAPS. SCALE 1 TO 62,500. LATITUDE AND LONGITUDE LINES BEING REPRESENTED BY BORDER LINES AS SHOWN.

- DENOTES ONE INCH SPACES ON BORDER LINE OF ORIGINAL TRACING.



STATE OF WEST VIRGINIA
DEPARTMENT OF MINES
OIL AND GAS DIVISION

Quadrangle Cameron

WELL RECORD

Permit No. MARS-346-D

Oil or Gas Well Gas

Large
Gas
(KIND)

Company The Manufacturers Light and Heat Company
Address 800 Union Trust Bldg., Pittsburgh 19, Pa.
Farm W. H. Loper Acres 104
Location (waters) _____
Well No. L-2210 Elev. 1220'
District Liberty County Marshall
The surface of tract is owned in fee by _____
Address _____
Mineral rights are owned by _____
Address _____
Drilling commenced November 17, 1958
Drilling completed January 23, 1959
Date Shot _____ From _____ To _____
With _____
Open Flow 78 /10ths Water in 1-1/2 Inch
_____ /10ths Merc. in _____ Inch
Volume 155,785 Cu. Ft.
Rock Pressure 16 lbs. 1 hr. hrs.
Oil _____ bbls., 1st 24 hrs.
Fresh water _____ feet _____ feet
Salt water _____ feet _____ feet

Casing and Tubing	Used in Drilling	Left in Well	Packers
Size			
16			Kind of Packer
13			
10	171' 2"		Size of
8 1/2"	981' 6"	1346'	
7 5/8"	2015'	10" 2015' 10"	Depth set
5 3/16			
3			Perf. top
2			Perf. bottom
Liners Used			Perf. top
			Perf. bottom

CASING CEMENTED _____ SIZE _____ No. Ft. _____ Date _____
COAL WAS ENCOUNTERED AT 916 FEET _____ INCHES
_____ FEET _____ INCHES FEET _____ INCHES
_____ FEET _____ INCHES FEET _____ INCHES

Formation	Color	Hard or Soft	Top	Bottom	Oil, Gas or Water	Depth Found	Remarks
✓ Pittsburgh Coal			916'	924'	Run 171' of 10-3/4" Casing, Sm. Gr. H. 32# on a Steel Shoe and Cemented it with 125 Bags Cement, 15.2 lbs. per Gallon. No Return of Cement at the Surface. Run 981'-6" of 8-5/8" Casing Sm. Gr. J 24# and connected it to 364' of original 8-5/8" Casing with a Steel Die Nipple. Cemented it with 300 Bags of Cement 14.3 lbs. per gall. Good Return of Cement at the surface. Run 2015-10" of 7" Casing Sm. Gr. J 20# on a Steel Shoe set at 2006' Cemented with 225 Bags of Cement 14.4 lbs. per Gallon. Good Return of Cement at the surface. Well Drilled to a Total Depth of 2300'.		
✓ Big Lime			1993'	2027'			
✓ Big Injun Sand			2034'	2300'			
TOTAL DEPTH				2300'			
7" Shoe Set at				2006'			
NOTE: Did Not Drill Through Big Injun Sand. Drilled to a Total Depth of 2300'							