

0 1 2 3

LATITUDE $89^{\circ} 55'$
 $39^{\circ} 57' 30''$

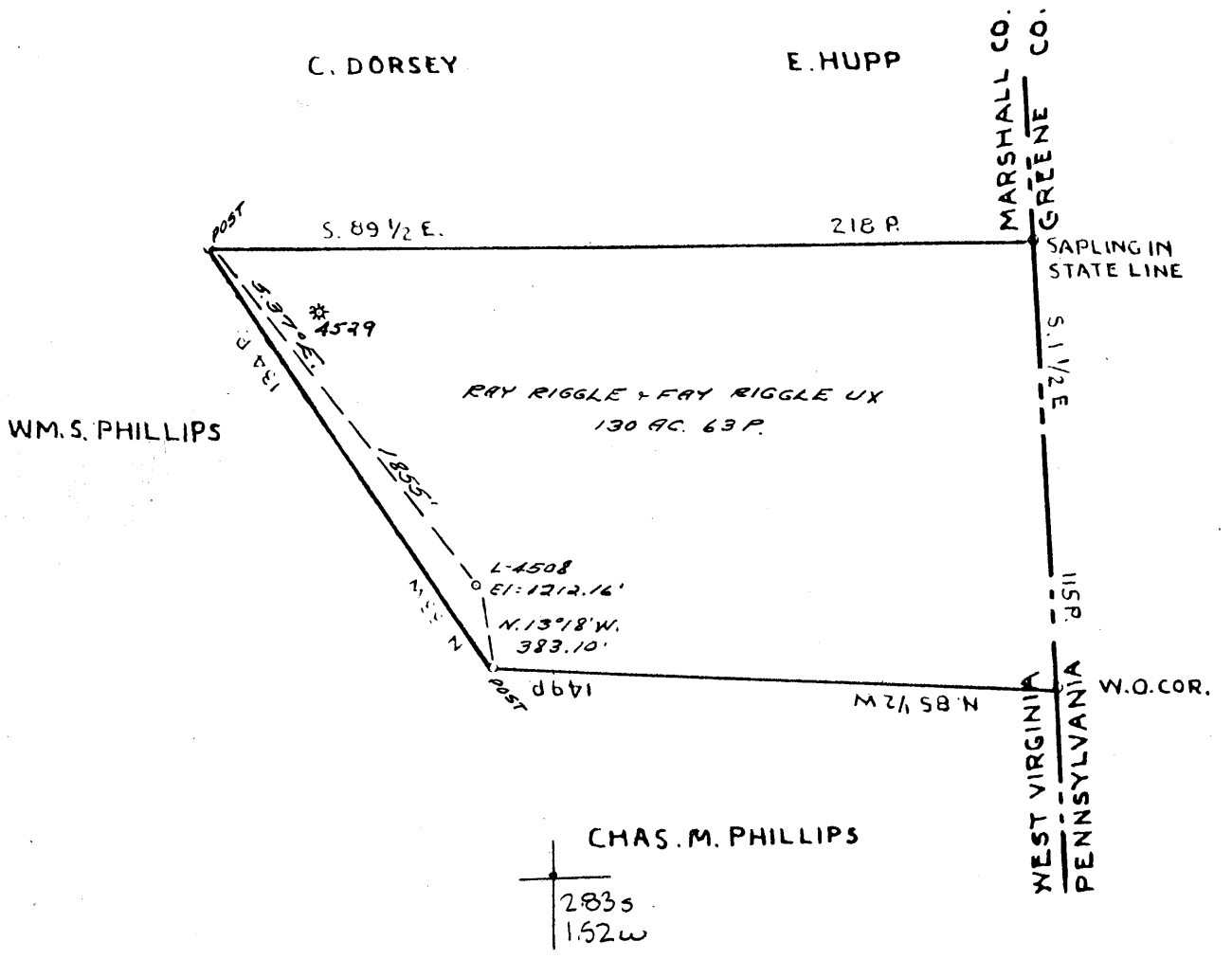
1

2

3

LONGITUDE $80^{\circ} 30'$

0.045
1.39W



COAL OWNED BY _____

RECONDITION

NEW LOCATION.....

DRILL DEEPER.....

ABANDONMENT.....

0-25-10

COMPANY THE MANUFACTURERS LIGHT & HEAT

ADDRESS 800 UNION TRUST BLDG. PGH. PA.

FARM RAY & FAY RIGGLE

TRACT _____ ACRES 140 LEASE NO. 19926

WELL (FARM) No. 1 SERIAL No. 4508

ELEVATION (SPIRIT LEVEL) 1212.16'

QUADRANGLE CAMERON EU

COUNTY MARSHALL DISTRICT WEBSTER

ENGINEER A. G. Streater M

ENGINEER'S REGISTRATION No. 9442

FILE No. _____ DRAWING No. Y-15-872

DATE 18 DEC. 1958 SCALE 1" = 800

STATE OF WEST VIRGINIA
DEPARTMENT OF MINES
OIL AND GAS DIVISION
CHARLESTON

WELL LOCATION MAP

FILE No. MARS-334-R

+ DENOTES LOCATION OF WELL ON UNITED STATES TOPOGRAPHIC MAPS. SCALE 1 TO 62,500. LATITUDE AND LONGITUDE LINES BEING REPRESENTED BY BORDER LINES AS SHOWN.

- DENOTES ONE INCH SPACES ON BORDER LINE OF ORIGINAL TRACING.

9-0 25



STATE OF WEST VIRGINIA
DEPARTMENT OF MINES
OIL AND GAS DIVISION

Quadrangle Common

Permit No. MARS-334-P

WELL RECORD

Oil or Gas Well Storage
~~Case~~
(1160)

Company	The Manufacturers Light and Heat Company			Casing and Tubing	Used in Drilling	Left in Well	Packers
Address	800 Union Trust Building Pittsburgh 19, Pennsylvania						
Farm	Ray Riggle	Acres	140	Size			
Location (waters)				18"	65'3"	65'3"	Kind of Packer
Well No.	L-4508	Elev.	1212.16 G. D.	18"	673'	673'	
District	Webster	County	Marshall	10"	703'	1356'	Size of
The surface of tract is owned in fee by				8 1/4"	1351'11"	1745'	Depth set
Mineral rights are owned by				6%			
				5 3/16			
Drilling commenced	January 23, 1959			3			Perf. top
Drilling completed	August 6, 1959			2			Perf. bottom
Date Shot	From	To		Liners Used			Perf. top
With							Perf. bottom

Open Flow /10ths Water in _____ Inch
/10ths Merc. in _____ Inch

Volume _____ Cu. Ft.

Rock Pressure 587 lbs. 72 hrs.

Oil _____ bbls., 1st 24 hrs.

Fresh water _____ feet

Salt water _____ feet

CASING CEMENTED _____ SIZE _____ No. Ft. _____ Date _____

COAL WAS ENCOUNTERED AT _____ FEET _____ INCHES
_____ FEET _____ INCHES _____ FEET _____ INCHES
_____ FEET _____ INCHES _____ FEET _____ INCHES

Formation	Color	Hard or Soft Thickness	Top	Bottom	Oil, Gas or Water	Depth Found	Remarks
✓Pittsburgh Coal		4	674	678			
Lime		5	705	710			
Sand		22	1144	1166			
✓Big Dunkard		31	1233	1264			
✓Gas Sand		52	1337	1389			
✓3rd Salt Sand		56	1577	1633			
✓Maxton Sand		68	1669	1737			
✓Big Injun			1771				
Cleaned out to 2285' and plugged back to 1975' and with neat cement.					Gas - 1851'	(Temperature Survey)	
					Gas - 1874'	(Temperature Survey)	
TOTAL DEPTH				1975	1771		
					1212		
					559		

