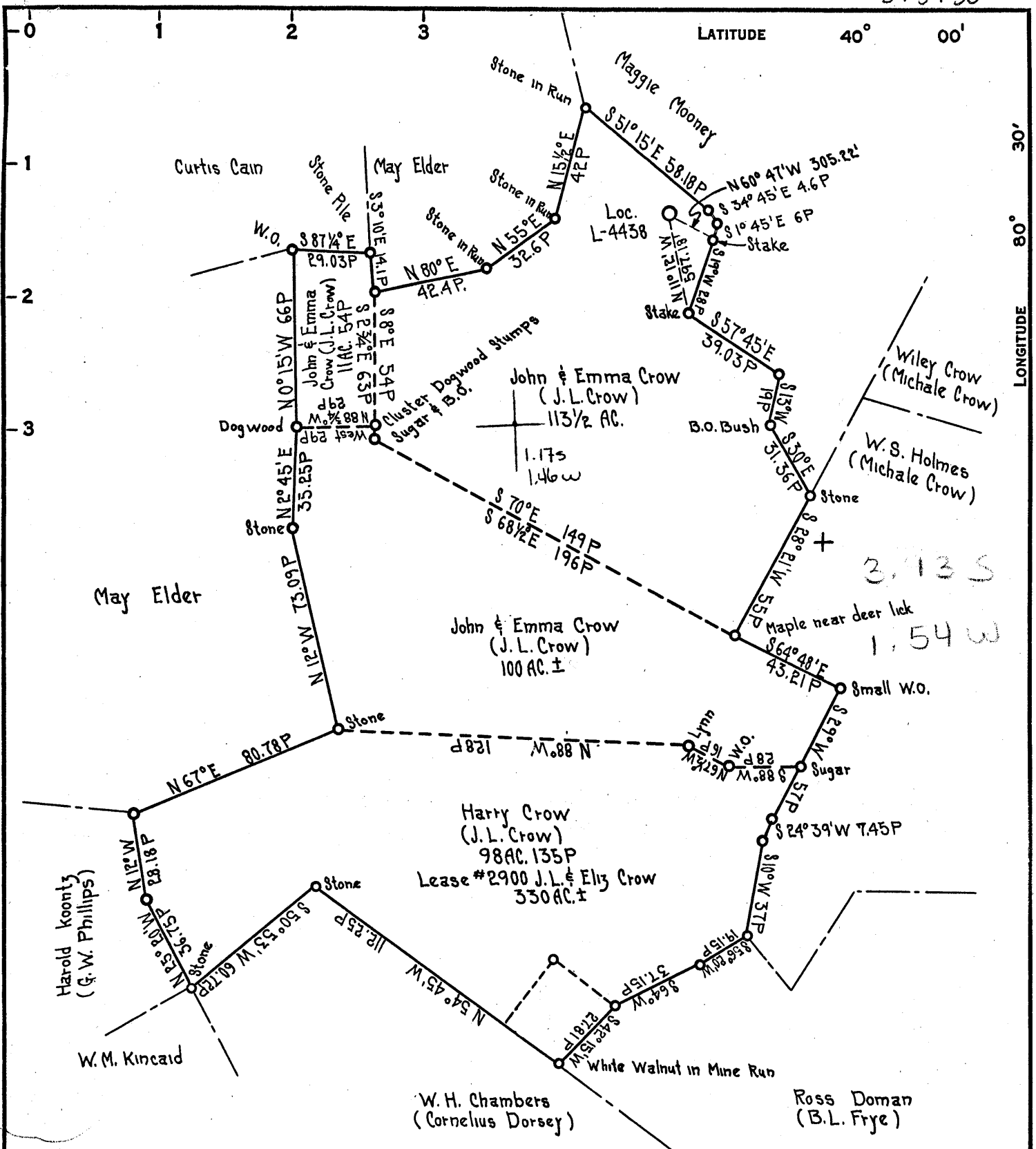


39° 57' 30"



EWING B. POLLOCK WAYNESBURG PA.
 THE FINLEY COMPANY
 COAL OWNED BY MONONGALIA IMPROVEMENT COMPANY

NEW LOCATION... STORAGE
 DRILL DEEPER...
 ABANDONMENT...

COMPANY THE MANUFACTURERS LIGHT AND HEAT CO.
 ADDRESS 800 UNION TRUST BLDG. PITTSBURGH PA.
 FARM JOHN & EMMA CROW
 TRACT _____ ACRES 330 LEASE No. L-2900
 WELL (FARM) No. 5 SERIAL No. L-4438
 ELEVATION (SPIRIT LEVEL) 1213.19
 QUADRANGLE CAMERON N.E. QUARTER NE
 COUNTY MARSHALL DISTRICT WEBSTER
 ENGINEER Robert M. McGill (A.C.S.)
 ENGINEER'S REGISTRATION No. 361-E.
 FILE No. _____ DRAWING No. Y-15-790
 DATE MAY 23 1958 SCALE 1" = 800'

STATE OF WEST VIRGINIA
 DEPARTMENT OF MINES
 OIL AND GAS DIVISION
 CHARLESTON

WELL LOCATION MAP
 FILE No. MARS-327

+ DENOTES LOCATION OF WELL ON UNITED STATES TOPOGRAPHIC MAPS, SCALE 1 TO 62,500. LATITUDE AND LONGITUDE LINES BEING REPRESENTED BY BORDER LINES AS SHOWN.
 - DENOTES ONE INCH SPACES ON BORDER LINE OF ORIGINAL TRACING.



STATE OF WEST VIRGINIA
DEPARTMENT OF MINES
OIL AND GAS DIVISION

Quadrangle Cameron N.E. Quarter

Permit No. MARS-327

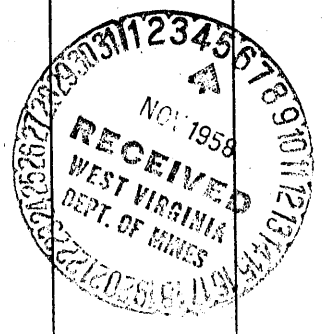
WELL RECORD

Oil or Gas Well Storage GAS
(KIND)

Company <u>The Manufacturers Light and Heat Company</u>	Casing and Tubing	Used in Drilling	Left in Well	Packers
Address <u>800 Union Trust Building, Pgh. 19, Penna.</u>				
Farm <u>John and Emma Crow</u> Acres <u>330</u>	Size			
Location (waters) _____	16			Kind of Packer _____
Well No. <u>4438</u> Elev. <u>1213.19</u>	13"	159'	159'	
District <u>Webster</u> County <u>Marshall</u>	10"	694'4"	694'4"	Size of _____
The surface of tract is owned in fee by _____	8 1/4"	1231'9"	1231'9"	Depth set _____
Address _____	8 1/4" 7"	1798'	1798'	
Mineral rights are owned by _____	5 3/16			Perf. top _____
Address _____	3			Perf. bottom _____
Drilling commenced <u>July 22, 1958</u>	2			Perf. top _____
Drilling completed <u>October 2, 1958</u>	Liners Used _____			Perf. bottom _____
Date Shot _____ From _____ To _____				
With _____				
Open Flow _____ /10ths Water in _____ Inch				
_____ /10ths Merc. in _____ Inch				
Volume _____ Cu. Ft.				
Rock Pressure <u>910</u> lbs. <u>72</u> hrs.				
Oil _____ bbls., 1st 24 hrs.				
Fresh water _____ feet _____ feet				
Salt water _____ feet _____ feet				

CASING CEMENTED	SIZE	No. Ft.	Date
COAL WAS ENCOUNTERED AT	FEET	INCHES	
	FEET	INCHES	FEET INCHES
	FEET	INCHES	FEET INCHES

Formation	Color	Hard or Soft THICKNESS	Top	Bottom	Oil, Gas or Water	Depth Found	Remarks
Sandstone		30	0	30			New Well Drilled for Storage on Budget
Lime, White		38	30	68			1852 - Elevation - 1213.19 (Ground Level)
Slate, White		22	68	90			Depth Datum - Derrick Floor - Same
Sand, Yellow		40	90	130			elevation as Original ground level
Slate, Pink		30	130	160			Water at 130'
Slate, Dark		35	160	195			
Lime, White		65	195	260			13 3/8" (48#, H-40) Csg. Pt. -159' Cemented
Slate, White		45	260	305			with 140 bags 8/15/58
Slate, Dark		55	305	360			10 3/4" (32.75#, H-40) Csg. Pt. -694'4"
Waynesburg Coal		3	360	363			cemented with 200 bags 8/22/58
Lime, White		17	363	380			8 5/8" (24#, J-55) Csg. Pt. -1231'9" Cemented
Slate		60	380	440			with 200 bags 9/2/58
Mapletown Lime		85	440	525			7" (20#, J-55) Csg. Pt. -1798' Cemented
Slate		30	525	555			with 150 bags 9/15/58
Lime, White		66	555	621			
Lime, Dark		10	621	631			
Slate		8	631	639			
Lime		21	639	660			
Pittsburgh Coal		4	660	664			
Lime, White		11	664	675			
Sand, White		12	675	687			
Slate, Dark		7	687	694			
Lime, Hard		6	694	700			
Slate		5	700	705			
Lime		8	705	713			
Red Rock		1	713	714			
Lime		13	714	727			
Shale		43	727	770			
Red Rock		40	770	810			
Lime		12	810	822			
Shale		10	822	832			
Red Rock		8	832	840			
Lime		70	840	910			
Red Rock		28	910	938			
Shale		54	938	992			
Sand		15	992	1007			
Slate		16	1007	1023			
Sand		15	1023	1038			
Shale		12	1038	1050			



Formation	Color	Hard or Soft THICKNESS	Top	Bottom	Oil, Gas or Water	Depth Found	Remarks
Red Rock		7	1050	1057			
Lime		6	1057	1063			
Sand		12	1063	1075			
Slate		21	1075	1096			
Lime		22	1096	1118			
Shale		10	1118	1128			
Lime		36	1128	1164			
Slate		15	1164	1179			
Red Rock		4	1179	1183			
Slate		25	1183	1208			
Lime		7	1208	1215			
Slate		15	1215	1230			
Lime		32	1230	1262			
✓ Coal		2	1262	1264	Smell of Gas		
Sand		10	1264	1274			
Lime		18	1274	1292			
✓ Sand (Gas Sand)		33	1292	1325			
Slate & Shells		25	1325	1350			
Slate & Shells		14	1350	1364			
Sand		20	1364	1384			
Slate & Shells		216	1384	1600			
✓ Sand (3rd. Salt)		109	1600	1709			
Slate		26	1709	1735			
✓ Big Lime		30	1735	1765			
✓ Big Injun			1765				
Total Depth				1832			
					1st Pay - 1817' - 1820'		- 208,000 cu.ft. per day
					2nd. pay - 1825' - 1827'		- 800,000 cu.ft. per day
					3rd. Pay - 1830' - 1832'		- 5,882,880 cu. ft./day
					Rock Pressure - 910# in		72 hrs.

1735
1213
522

Date November 3, 19 58

APPROVED THE MANUFACTURERS LIGHT & HEAT CO., Owner

By _____ (Title) Land Agent