

2395  
34w

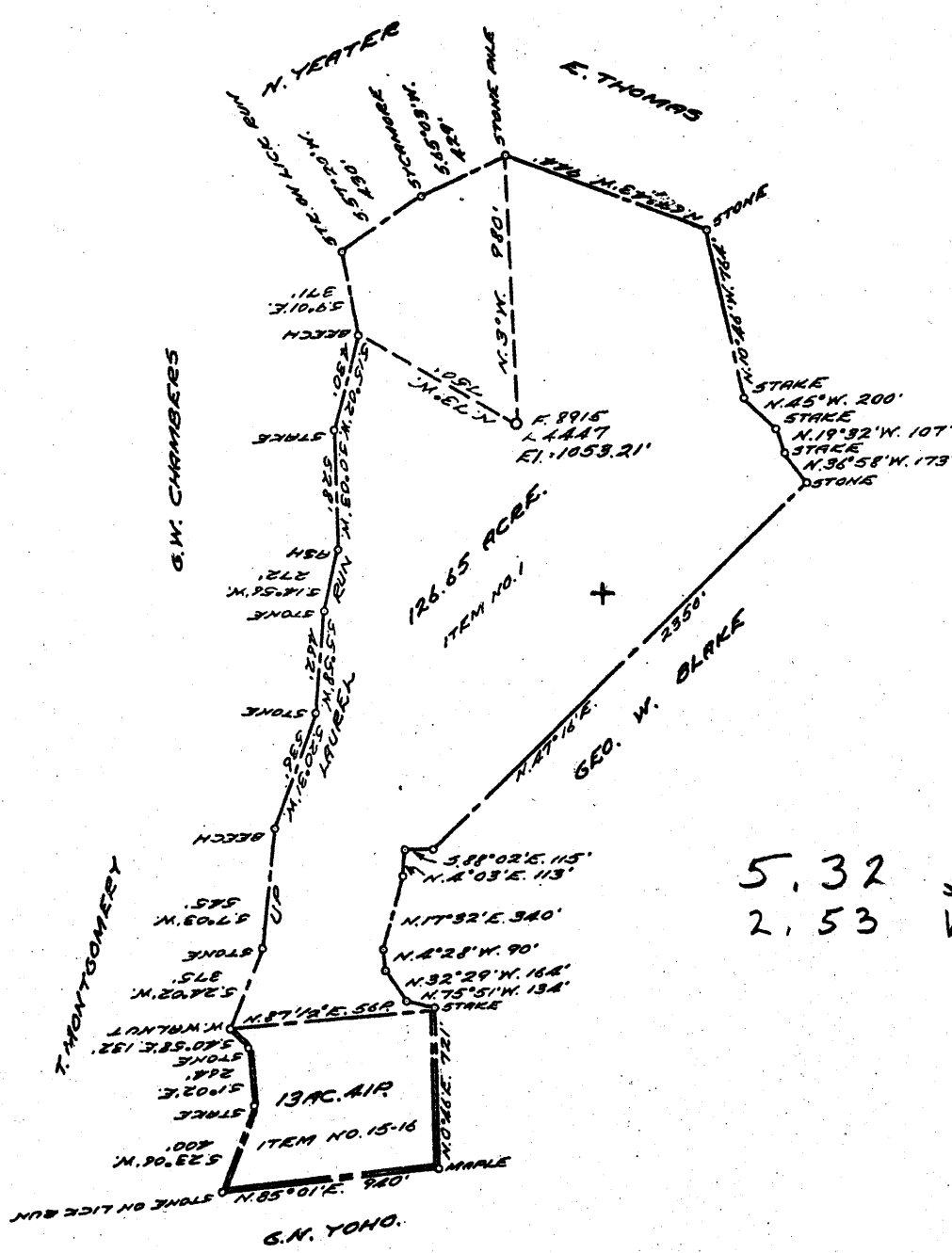
COAL OWNED BY \_\_\_\_\_  
 RECONDITION   
 NEW LOCATION.....   
 DRILL DEEPER.....   
 ABANDONMENT.....  - Issued 7-13-70

COMPANY THE MANUFACTURERS LIGHT & HEAT  
 ADDRESS 800 UNION TRUST BLDG. PGM. PA.  
 FARM HOBSON TEAGARDEN  
 TRACT \_\_\_\_\_ ACRES 150 LEASE No. 26509  
 WELL (FARM) No. 1 SERIAL No. AAA7  
 ELEVATION (SPIRIT LEVEL) 1053.21'  
 QUADRANGLE CAMERON SC  
 COUNTY MARSHALL DISTRICT LIBERTY  
 ENGINEER John A. Loudon (G.E.A.)  
 ENGINEER'S REGISTRATION No. 12710 Pa.  
 FILE No. \_\_\_\_\_ DRAWING No. Y-15-674  
 DATE 26 NOV. 1957 SCALE 1" = 800'

STATE OF WEST VIRGINIA  
 DEPARTMENT OF MINES  
 OIL AND GAS DIVISION  
 CHARLESTON

WELL LOCATION MAP  
 FILE No. MARS-317-Redrill-P

+ DENOTES LOCATION OF WELL ON UNITED STATES TOPOGRAPHIC MAPS, SCALE 1 TO 62,500. LATITUDE AND LONGITUDE LINES BEING REPRESENTED BY BORDER LINES AS SHOWN.  
 - DENOTES ONE INCH SPACES ON BORDER LINE OF ORIGINAL TRACING.



COAL OWNED BY \_\_\_\_\_  
 RECONDITION   
 NEW LOCATION.....  
 DRILL DEEPER.....  
 ABANDONMENT.....

COMPANY THE MANUFACTURERS LIGHT & HEAT  
 ADDRESS 800 UNION TRUST BLDG. PCH. PA.  
 FARM HOBSON TERGARDEN  
 TRACT \_\_\_\_\_ ACRES 150 LEASE No. 26509  
 WELL (FARM) No. 1 SERIAL No. 4447  
 ELEVATION (SPIRIT LEVEL) 1059.21'  
 QUADRANGLE CAMERON SC  
 COUNTY MARSHALL DISTRICT LIBERTY  
 ENGINEER John A. Loudon (G.E.A.)  
 ENGINEER'S REGISTRATION No. 12710 Pa.  
 FILE No. \_\_\_\_\_ DRAWING No. Y-15-574  
 DATE 26 NOV. 1957 SCALE 1" = 800'

STATE OF WEST VIRGINIA  
 DEPARTMENT OF MINES  
 OIL AND GAS DIVISION  
 CHARLESTON

**WELL LOCATION MAP**

FILE No. MARS-317-Redrill

+ DENOTES LOCATION OF WELL ON UNITED STATES TOPOGRAPHIC MAPS, SCALE 1 TO 62,500. LATITUDE AND LONGITUDE LINES BEING REPRESENTED BY BORDER LINES AS SHOWN.  
 - DENOTES ONE INCH SPACES ON BORDER LINE OF ORIGINAL TRACING.



STATE OF WEST VIRGINIA  
DEPARTMENT OF MINES  
OIL AND GAS DIVISION

Quadrangle Cameron

WELL RECORD

Permit No. MARS-317

Oil or Gas Well GAS  
(KIND)

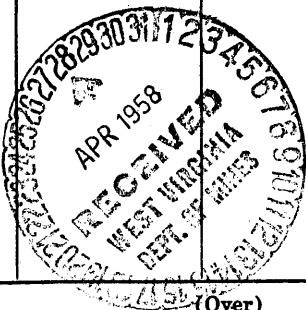
Company The Manufacturers Light & Heat Company  
Address 800 Union Trust Building, Pgh. 19, Pa.  
Farm Hobson Teagarden Acres 150  
Location (waters) \_\_\_\_\_  
Well No. 4447 Elev. 1053.21'  
District Liberty County Marshall  
The surface of tract is owned in fee by \_\_\_\_\_  
Address \_\_\_\_\_  
Mineral rights are owned by \_\_\_\_\_  
Address \_\_\_\_\_  
Drilling commenced January 13, 1958  
Drilling completed April 3, 1958  
Date Shot \_\_\_\_\_ From \_\_\_\_\_ To \_\_\_\_\_  
With \_\_\_\_\_  
Open Flow \_\_\_\_\_ /10ths Water in \_\_\_\_\_ Inch  
\_\_\_\_\_ /10ths Merc. in \_\_\_\_\_ Inch  
Volume \_\_\_\_\_ Cu. Ft.  
Rock Pressure 650 lbs. 120 5-Day hrs.  
Oil \_\_\_\_\_ bbls., 1st 24 hrs.  
Fresh water \_\_\_\_\_ feet \_\_\_\_\_ feet  
Salt water \_\_\_\_\_ feet \_\_\_\_\_ feet

Casing and Tubing	Used in Drilling	Left in Well	Packers
Size			
16"			Kind of Packer _____
13"	27'	27'	Anchor
10"	265'	265'	Size of <u>2-3/8 x 5 1/4</u>
8 1/4"	1335'	1335'	Depth set <u>1859'</u>
6 5/8"			
5 3/16"	1914'	1914'	
3 1/2"	326'	326'	Perf. top _____
2 3/8"	1870'	1870'	Perf. bottom _____
Liners Used _____			Perf. top _____
			Perf. bottom _____

CASING CEMENTED \_\_\_\_\_ SIZE \_\_\_\_\_ No. Ft. \_\_\_\_\_ Date \_\_\_\_\_

COAL WAS ENCOUNTERED AT \_\_\_\_\_ FEET \_\_\_\_\_ INCHES  
\_\_\_\_\_ FEET \_\_\_\_\_ INCHES \_\_\_\_\_ FEET \_\_\_\_\_ INCHES  
\_\_\_\_\_ FEET \_\_\_\_\_ INCHES \_\_\_\_\_ FEET \_\_\_\_\_ INCHES

Formation	Color	Hard or Soft THICKNESS	Top	Bottom	Oil, Gas or Water	Depth Found	Remarks
Schlumberger	Well Survey						All Pipe measured over threads.
<del>Pittsburgh Coal</del>				800			Run 265' of 10 3/4" Casing, Sm., Gr. H 32# on a Steel Shoe. Not cemented.
<del>Maxton Sand</del>		19	1803	1822			Run 1335' of 8 5/8" Casing, Sm., Gr. J 24# on a Steel Shoe. Run 400 Bags of Cement and 5 bags of Aquagel at 14.8 Pounds per gallon. No Return at the surface. Run 1914' of 5 1/2" Casing, Sm., Gr. J 17# on a steel shoe set at 1900'. Four 5 1/2" x 8 5/8" Casing Centralizers were spaced at 1300', 900', 600' and 300'. Run 350 bags of cement and 2 bags of Aquagel at 15.3 pounds per gallon. Good Cement return at surface. The 5 1/2" Casing was shot in Maxton Sand with 72 1/2" bullets at depth 1805 to 1822. Run 326' of 3 1/2" Tubing, Used 9# as anchor, perforated first and fourteenth joint. Set Anchor Packer at 1859' and Run 1870' of 2 3/8" Upset Tubing, used, 4.70# to surface.
<del>Big Injun Sand</del>				2176			
Total Depth				2176			
5 1/2" Shoe set at				1900			
Packer Set at				1859			



(Over)