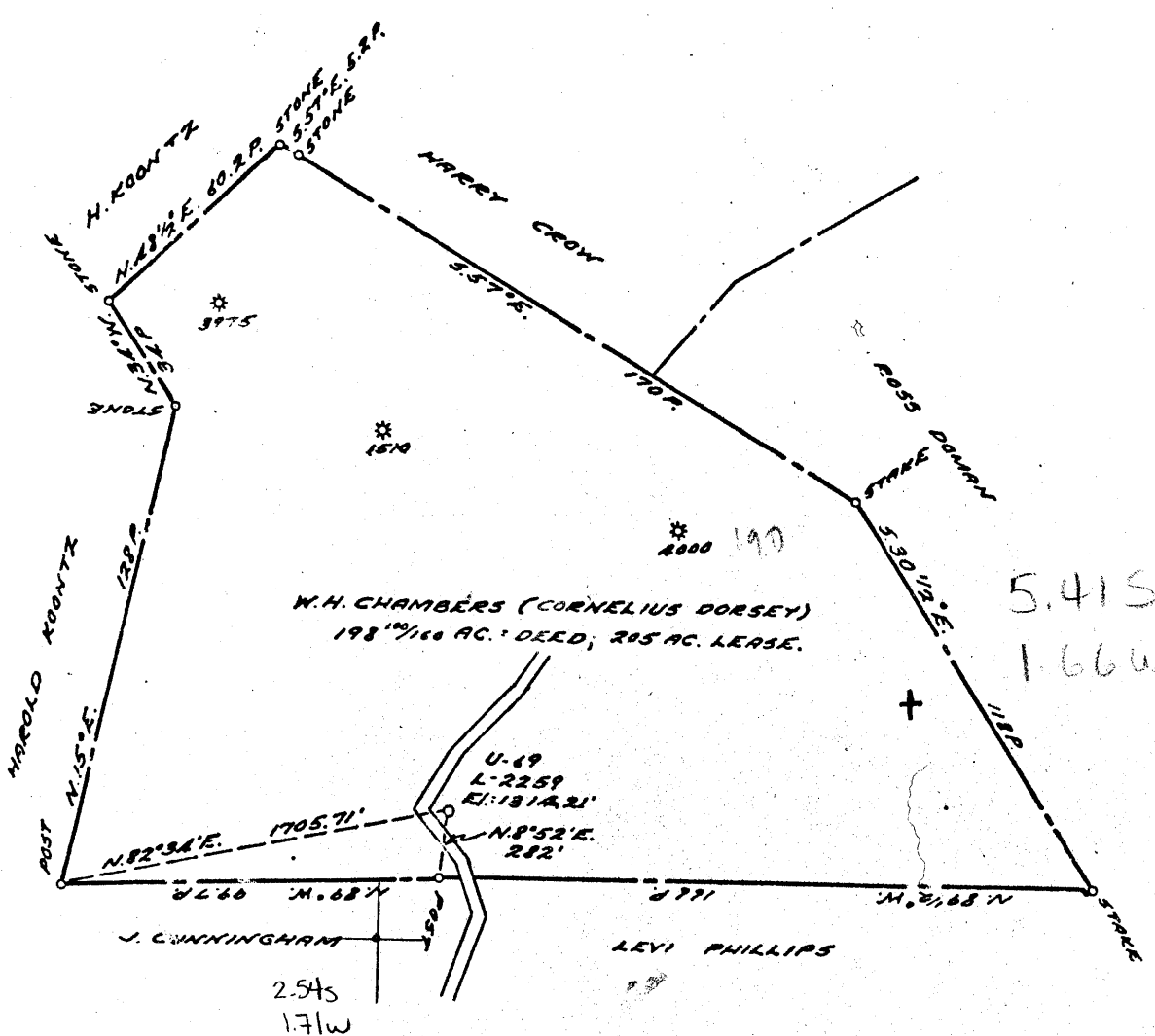


39°57'30" P

LATITUDE 20 00'

LONGITUDE 80 30'



COAL OWNED BY  
RECON. FOR STORAGE

NEW LOCATION...

DRILL DEEPER...

ADDITIONAL...

36026

COMPANY THE MANUFACTURERS LIGHT & HEAT

ADDRESS 800 UNION TRUST BLDG. PGH. PA.

FARM CORNELIUS DORSEY

TRACT \_\_\_\_\_ ACRES 205 LEASE No. 2440

WELL (FARM) No. 2 SERIAL No. 2259

ELEVATION (SPRINT LEVEL) 1314.21'

QUADRANGLE CAMERON - NE

COUNTY MARSHALL DISTRICT WEBSTER

ENGINEER A. C. Streater M.

ENGINEER'S REGISTRATION No. 9442

FILE No. \_\_\_\_\_ DRAWING No. Y-15-534

DATE 28 FEB. 1957 SCALE 1" = 800'

STATE OF WEST VIRGINIA  
DEPARTMENT OF MINES  
OIL AND GAS DIVISION  
CHARLESTON

### WELL LOCATION MAP

FILE No. MARS-303-R

† DENOTES LOCATION OF WELL ON UNITED STATES TOPOG. MAPS, SCALE 1 TO 62,500, LATITUDE AND LONGITUDE LINES BEING REPRESENTED BY BORDER LINES AS SHOWN.

- DENOTES ONE INCH SPACES ON BORDER LINE OF ORIGINAL TRACING

9-0 22



STATE OF WEST VIRGINIA  
DEPARTMENT OF MINES  
OIL AND GAS DIVISION

Quadrangle Cameron

Permit No. MARS-303-R

WELL RECORD

Oil or Gas Well Storage GAS  
(KIND)

Company <u>The Manufacturers Light and Heat Company</u>	Casing and Tubing	Used in Drilling	Left in Well	Packers
Address <u>800 Union Trust Building, Pgh. 19, Penna.</u>	Size			Kind of Packer
Farm <u>Cornelius Dorsey</u> Acres <u>205</u>	16			
Location (waters)	18 "	166'7"	166'7"	
Well No. <u>2259</u> Elev. <u>1314.21'</u>	10 "	453'9"	453'9"	Size of
District <u>Webster</u> County <u>Marshall</u>	8 1/2 "	470'2"	1153'	
The surface of tract is owned in fee by	6 3/8 " 7"	1896'8"	1896'8"	Depth set
Mineral rights are owned by	5 3/16			
Address	3			Perf. top
Reconditioning commenced <u>JULY, 1957</u>	2			Perf. bottom
Reconditioning completed <u>February 16, 1958</u>	Liners Used			Perf. top
Date Shot From To				Perf. bottom
With				
Open Flow /10ths Water in Inch	CASING CEMENTED	SIZE	No. Ft.	Date
/10ths Merc. in Inch				
Volume <u>63,683</u> Cu. Ft.	COAL WAS ENCOUNTERED AT	FEET	INCHES	
Rock Pressure <u>707</u> lbs. <u>72</u> hrs.				
Oil bbls., 1st 24 hrs.	FEET	INCHES	FEET	INCHES
Fresh water feet	FEET	INCHES	FEET	INCHES
Salt water feet	FEET	INCHES	FEET	INCHES

Formation	Color	Hard or Soft THICKNESS	Top	Bottom	Oil, Gas or Water	Depth Found	Remarks
SCHLUMBERGER	GAMMA RAY SURVEY				Abandoned Well	Well Reconditioned on	
✓ Pittsburgh Coal		5	776	781	W. O. 1752-1-1463-5	Elevation - 1314.21' (ground level)	
Lime		6	806	812		Depth Datum - derrick floor - 2' above ground level.	
Sand		18	1252	1270	13-3/8" (48# H-40) Csg. Pt. - 166'7"		
Sand		33	1335	1368	Cemented with 150 bags. 7/25/57		
✓ Gas Sand		72	1424	1496	10-3/4" (32.75# H-40) Csg. Pt. - 453'9"		
Sand		37	1585	1622	cemented with 125 bags. 9/17/57		
✓ 3rd. Salt Sand		40	1700	1740	8-5/8" (24# J-55) Csg. - 470'2" Screwed		
✓ Maxton Sand		42	1770	1812	on and cemented with 75 bags. 10/1/57		
✓ Big Lime		10	1868	1878	Original 8" Cemented thru coal		
✓ Big Inun			1878		when well was plugged. Bottom of		
C.O. to original depth of 2008'					original 8" - 1153' (Schlum)		
Total Depth				2008	7" (17# H-40) Csg. Pt. - 1896'8" Cemented		
Pay Zone			1974	1990	with 175 bags. 12-2-57		
			1868 1314 354		Gamma Ray-Neutron indicated the pay zone to be from 1974 to 1990. with oil and water from 1983 to 1990. Temperature Survey showed top of gas at 1975'.		
					Well makes 5 gal. of oil and 10 gal. of water/hr. Fills 30' in well bore after 48 hr. shut-in with 650 p.s.i. well head pressure.		

CORNELIUS DORSEY NO. 2259 (ML&H) 69 (UGO) WELL.

No. 89 O.F. - Marshall

26A → 303

Webster District, Marshall County, W. Va.

Manufacturers Light & Heat Co., 800 Union Tr. Bldg., Pittsburgh, Pa.

On 205 acres, surface owned by W. H. Chambers, RD 3, Cameron, W. Va.,  
and mineral rights by ML&H Co., Pittsburgh, Pa.

Drilled prior to June 1, 1929.

Elevation, 1308'.

10" casing, 238'; 8 $\frac{1}{2}$ " 1172'; 6-5/8" 1919'.

Coal was encountered at 675-679 and 770-775'.

Abandonment reported to Dept. of Mines Jan. 12, 1933.

	Top.	Bottom.
Mapletown Coal	675	- 679
Pittsburgh Coal	770	- 775
Little Dunkard Sand (gas at 1150')	1145	- 1155
Big Dunkard Sand	1235	- 1270
Stray Sand (some gas at 1345')	1310	- 1365
Salt Sand	1685	- 1750
Maxton Sand (show of oil, 1770')	1765	- 1825 ?
Big Lime	1770	- 1790 ?
Big Injun Sand (oil, 1980-1990')	1890?	
Total depth		2010

NOTE: Big Lime probably should be 1870-1890 and B.I. top at 1980...RCT