



West Virginia Department of Environmental Protection  
Office of Oil and Gas  
**WELL LOCATION FORM: GPS**

API: 47-51-00301 P WELL NO.: SGW60

FARM NAME: Wiley Caldwell

RESPONSIBLE PARTY NAME: \_\_\_\_\_

COUNTY: Marshall DISTRICT: Sandhill

QUADRANGLE: Valley Grove 7.5"

SURFACE OWNER: James M. Weeks Sr. & Suzanne Quinn

ROYALTY OWNER: \_\_\_\_\_

UTM GPS NORTHING: 4428418.5m

UTM GPS EASTING: 540607.5m GPS ELEVATION: 1119.3'

The Responsible Party named above has chosen to submit GPS coordinates in lieu of preparing a new well location plat for a plugging permit on the above well. The Office of Oil and Gas will not accept GPS coordinates that do not meet the following requirements:

- 1. Datum: NAD 1983, Zone: 17 North, Coordinate Units: meters, Altitude: height above mean sea level (MSL) – meters.
- 2. Accuracy to Datum – 3.05 meters
- 3. Data Collection Method:

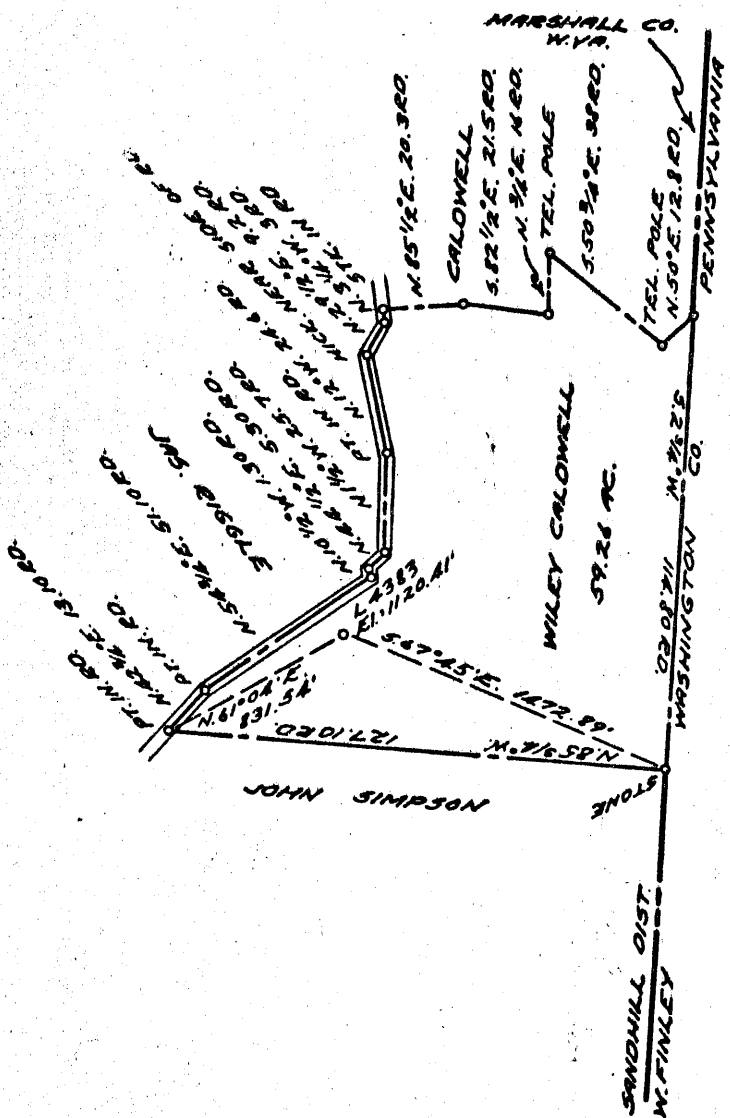
Survey grade GPS X : Post Processed Differential \_\_\_\_\_  
 Real-Time Differential 0.04m \_\_\_\_\_  
 Mapping Grade GPS \_\_\_\_\_ : Post Processed Differential \_\_\_\_\_  
 Real-Time Differential \_\_\_\_\_

I the undersigned, hereby certify this data is correct to the best of my knowledge and belief and shows all the information required by law and the regulations issued and prescribed by the Office of Oil and Gas.

#2002 Professional Surveyor  
 Signature Title  
May 23, 2003  
 Date

MARS 0301 P





5.43 S  
1.39 W  
+

COAL OWNED BY REDRILL ✓

NEW LOCATION.....   
 DRILL DEEPER.....   
 ABANDONMENT.....

COMPANY THE MANUFACTURERS LIGHT & HEAT  
 ADDRESS 800 UNION TRUST BLDG. PGH. PENNA.  
 FARM WILEY CALDWELL  
 TRACT \_\_\_\_\_ ACRES 65 LEASE No. 23795  
 WELL (FARM) No. 1 SERIAL No. 4383  
 ELEVATION (SPIRIT LEVEL) 1120.41'  
 QUADRANGLE WHEELING  
 COUNTY MARSHALL DISTRICT SANDHILL  
 ENGINEER A. G. Streater M  
 ENGINEER'S REGISTRATION No. 9442  
 FILE No. \_\_\_\_\_ DRAWING No. Y-15-465  
 DATE 18 SEPT. 1956 SCALE 1" = 800'

STATE OF WEST VIRGINIA  
 DEPARTMENT OF MINES  
 OIL AND GAS DIVISION  
 CHARLESTON

**WELL LOCATION MAP**

FILE No. MARS-301-Redrill

+ DENOTES LOCATION OF WELL ON UNITED STATES TOPOGRAPHIC MAPS, SCALE 1 TO 62,500, LATITUDE AND LONGITUDE LINES BEING REPRESENTED BY BORDER LINES AS SHOWN.

- DENOTES ONE INCH SPACES ON BORDER LINE OF ORIGINAL TRACING.



STATE OF WEST VIRGINIA  
DEPARTMENT OF MINES  
OIL AND GAS DIVISION

WELL RECORD

Quadrangle Whiting  
Permit No. MARS-301-R

Oil or Gas Well Gas  
(KIND)

Company The Manufacturers Light and Heat Co.  
Address 800 Union Trust Bldg., Pittsburgh, Pa.  
Farm Wiley Caldwell Acres 65  
Location (waters) \_\_\_\_\_  
Well No. L-4383 Elev. 1120.41  
District Sandhill County Marshall  
The surface of tract is owned in fee by \_\_\_\_\_  
Address \_\_\_\_\_  
Mineral rights are owned by \_\_\_\_\_  
Address \_\_\_\_\_  
Drilling commenced January, 1957  
Drilling completed July 11, 1957  
Date Shot \_\_\_\_\_ From \_\_\_\_\_ To \_\_\_\_\_  
With \_\_\_\_\_  
Open Flow \_\_\_\_\_ /10ths Water in \_\_\_\_\_ Inch  
\_\_\_\_\_ /10ths Merc. in \_\_\_\_\_ Inch  
Volume Nil Cu. Ft.  
Rock Pressure \_\_\_\_\_ lbs. \_\_\_\_\_ hrs.  
Oil \_\_\_\_\_ bbls., 1st 24 hrs.  
Fresh water \_\_\_\_\_ feet \_\_\_\_\_ feet  
Salt water \_\_\_\_\_ feet \_\_\_\_\_ feet

Casing and Tubing	Used in Drilling	Left in Well	Packers
Size			
16"			Kind of Packer _____
13"	128'4"	128'4"	
10"	656'3"	656'3"	Size of _____
8 1/4"	688'	999'	
6 3/8"			Depth set _____
5 3/16"	1379'11"	1379'11"	
3"			Perf. top _____
2"			Perf. bottom _____
Liners Used			Perf. top _____
			Perf. bottom _____

CASING CEMENTED \_\_\_\_\_ SIZE \_\_\_\_\_ No. Ft. \_\_\_\_\_ Date \_\_\_\_\_  
COAL WAS ENCOUNTERED AT \_\_\_\_\_ FEET \_\_\_\_\_ INCHES  
\_\_\_\_\_ FEET \_\_\_\_\_ INCHES FEET \_\_\_\_\_ INCHES  
\_\_\_\_\_ FEET \_\_\_\_\_ INCHES FEET \_\_\_\_\_ INCHES

Formation	Color	Hard or Soft	Top	Bottom	Oil, Gas or Water	Depth Found	Remarks
SCHLUMBERGER GAMMA RAY SURVEY							
		Thickness					
✓ Pittsburgh Coal		6	628	634			
✓ Lime		9	665	674			
✓ 1st. Salt Sand		34	1380	1414			
Cleaned Out to 1512' and Plugged back to 1417' with a cement plug							
TOTAL DEPTH			1417				
				1380 1120 260			
					OBSERVATION WELL Reconditioned on W. O. 1652-L-1364-5 Elevation - 1120.41' (Ground Level) Depth Datum - Derrick Floor 2' above ground level. 13 3/8" (48#, H-40) Csg. Pt. - 128'4" Cemented with 135 bags 2/26/57 10 3/4" (32.75#, H-40) Bsg. Pt. 656'3" Cemented with 175 bags 5/8/57 8 5/8" (24#, J-55) Csg. - 688' Screwed on and Cemented with 100 bags 5/21/57 Bottom of original 8" - 999' (Schlumberger) 5 1/2" (17#, J-55) Csg. Pt. 1379'11" Cemented with 250 bags 6/19-57 138' of old 7" Casing left in hole from 1290' to 1429'. This section was perforated with 48 shots, 3 shots /2ft. from 1380' to 1412' in the First Salt Sand. The well made 14 gal. of water per hour and filled up 1100' in 72 hours, Some gas apparent but not measureable.		
							1120 628 492