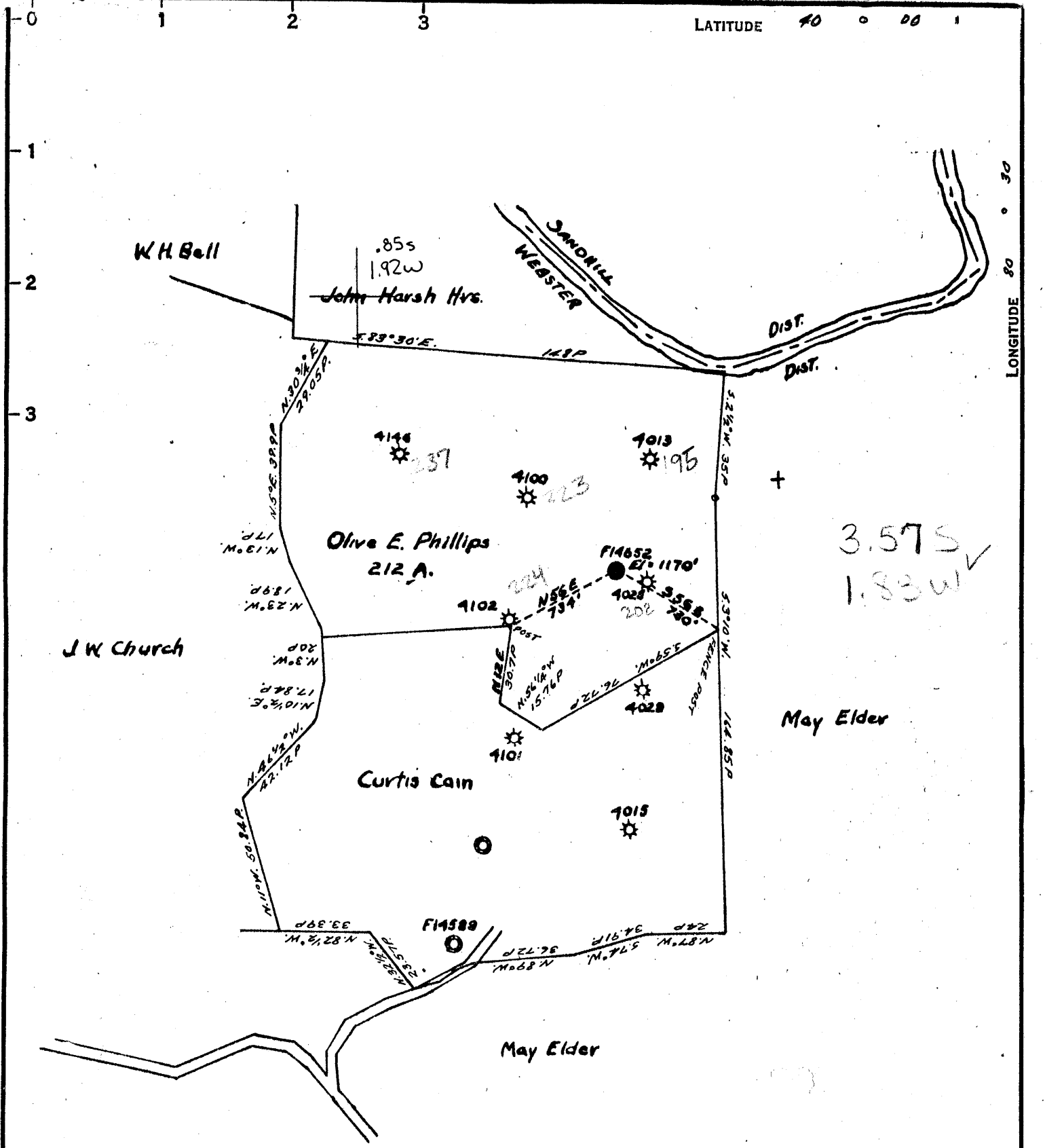


34°57'30"

LATITUDE 40 0 00 1

LONGITUDE 80 0 30



COAL OWNED BY \_\_\_\_\_  
 RECONDITIONED

NEW LOCATION...

DRILL DEEPER...

ABANDONMENT...

COMPANY THE MANUFACTURERS LIGHT & HEAT CO.

ADDRESS 300 UNION TRUST BLDG. PSH. PA.

FARM OLIVE E. PHILLIPS

TRACT \_\_\_\_\_ ACRES 212 LEASE No. 19484

WELL (FARM) No. \_\_\_\_\_ SERIAL No. F-14652

ELEVATION (SPIRIT LEVEL) 1170'

QUADRANGLE CAMERON

COUNTY MARSHALL DISTRICT WEBSTER

ENGINEER Robert M. Heall

ENGINEER'S REGISTRATION No. 361-E

FILE No. \_\_\_\_\_ DRAWING No. Y-15-302

DATE 20 SEPTEMBER 1955 SCALE 1" = 800'

STATE OF WEST VIRGINIA  
 DEPARTMENT OF MINES  
 OIL AND GAS DIVISION  
 CHARLESTON

WELL LOCATION MAP  
 FILE No. MARS-288-Redrill

+ DENOTES LOCATION OF WELL ON UNITED STATES TOPOGRAPHIC MAPS, SCALE 1 TO 62,500, LATITUDE AND LONGITUDE LINES BEING REPRESENTED BY BORDER LINES AS SHOWN.

- DENOTES ONE INCH SPACES ON BORDER LINE OF ORIGINAL TRACING.



STATE OF WEST VIRGINIA  
DEPARTMENT OF MINES  
OIL AND GAS DIVISION

Quadrangle Cameron

Permit No. MARS-288-R

WELL RECORD

Storage  
Oil or Gas Well Gas  
(KIND)

Company THE MANUFACTURERS LIGHT AND HEAT COMPANY  
Address 800 UNION TRUST BLDG., PGH., PA.  
Farm Olive E. Phillips Acres 212  
Location (waters) \_\_\_\_\_  
Well No. 4351 (F-14652) Elev. 1170'  
District Webster County Marshall  
The surface of tract is owned in fee by \_\_\_\_\_  
Address \_\_\_\_\_  
Mineral rights are owned by \_\_\_\_\_  
Address \_\_\_\_\_  
Drilling commenced September, 1955  
Drilling completed February 28, 1956  
Date Shot \_\_\_\_\_ From \_\_\_\_\_ To \_\_\_\_\_  
With \_\_\_\_\_

Casing and Tubing	Used in Drilling	Left in Well	Packers
Size			
16			Kind of Packer _____
13	215'	215'	
10	659'	659'	Size of _____
8 1/4	689'	689'	
6 5/8	1734'	1734'	Depth set _____
5 3/16			
3			Perf. top _____
2			Perf. bottom _____
Liners Used			Perf. top _____
			Perf. bottom _____

Open Flow \_\_\_\_\_ /10ths Water in \_\_\_\_\_ Inch  
\_\_\_\_\_ 12/10ths Merc. in 4 Inch  
Volume 2,500,000 Cu. Ft.  
Rock Pressure 453 lbs. 72 hrs.  
Oil \_\_\_\_\_ bbls., 1st 24 hrs.  
Fresh water \_\_\_\_\_ feet  
Salt water \_\_\_\_\_ feet

CASING CEMENTED \_\_\_\_\_ SIZE \_\_\_\_\_ No. Ft. \_\_\_\_\_ Date \_\_\_\_\_  
COAL WAS ENCOUNTERED AT 618 FEET \_\_\_\_\_ INCHES  
\_\_\_\_\_ FEET \_\_\_\_\_ INCHES FEET \_\_\_\_\_ INCHES  
\_\_\_\_\_ FEET \_\_\_\_\_ INCHES FEET \_\_\_\_\_ INCHES

Formation	Color	Hard or Soft	Top	Bottom	Oil, Gas or Water	Depth Found	Remarks
✓ Pittsburgh Coal			618	624			
Sand or Lime			1068	1105			
✓ Big Dunkard			1142	1155			
✓ Gas sand			1263	1330			
✓ 1st. salt sand			1387	1426			
✓ 2nd salt sand			1508	1523			
✓ 3rd salt sand			1595				
✓ Maxton sand				1673			
✓ Big Injun			1710 to	T. D.	Gas pay -	1792' approx.	
Total Depth				1825			
				<u>375</u>			

