

COAL OWNED BY, ADALINE COAL CO.
FAIRMONT, W.VA.

Abandonment *issued 5/23/72*

Columbia Gas Transmission Corp.
 Company **THE WEST VIRGINIA GAS & COAL CO.**
 Address **PITTSBURGH, PA., 15219**
 Farm **JOSEPHUS AND M.A. BLAKE**
 Tract **Acres 30** Lease No. **2298**
 Well (Farm) No. **2** Serial No. **L-2701**
 Elevation (Spirit Level) **8500'**
 Quadrangle **SAMERON T-6 (50)**
 County **MARSHALL** District **LIBERTY**
 Engineer **L. H. C. ...**
 Engineer's Registration No. _____
 File No. _____ Drawing No. **Y-7-913**
 etc. _____

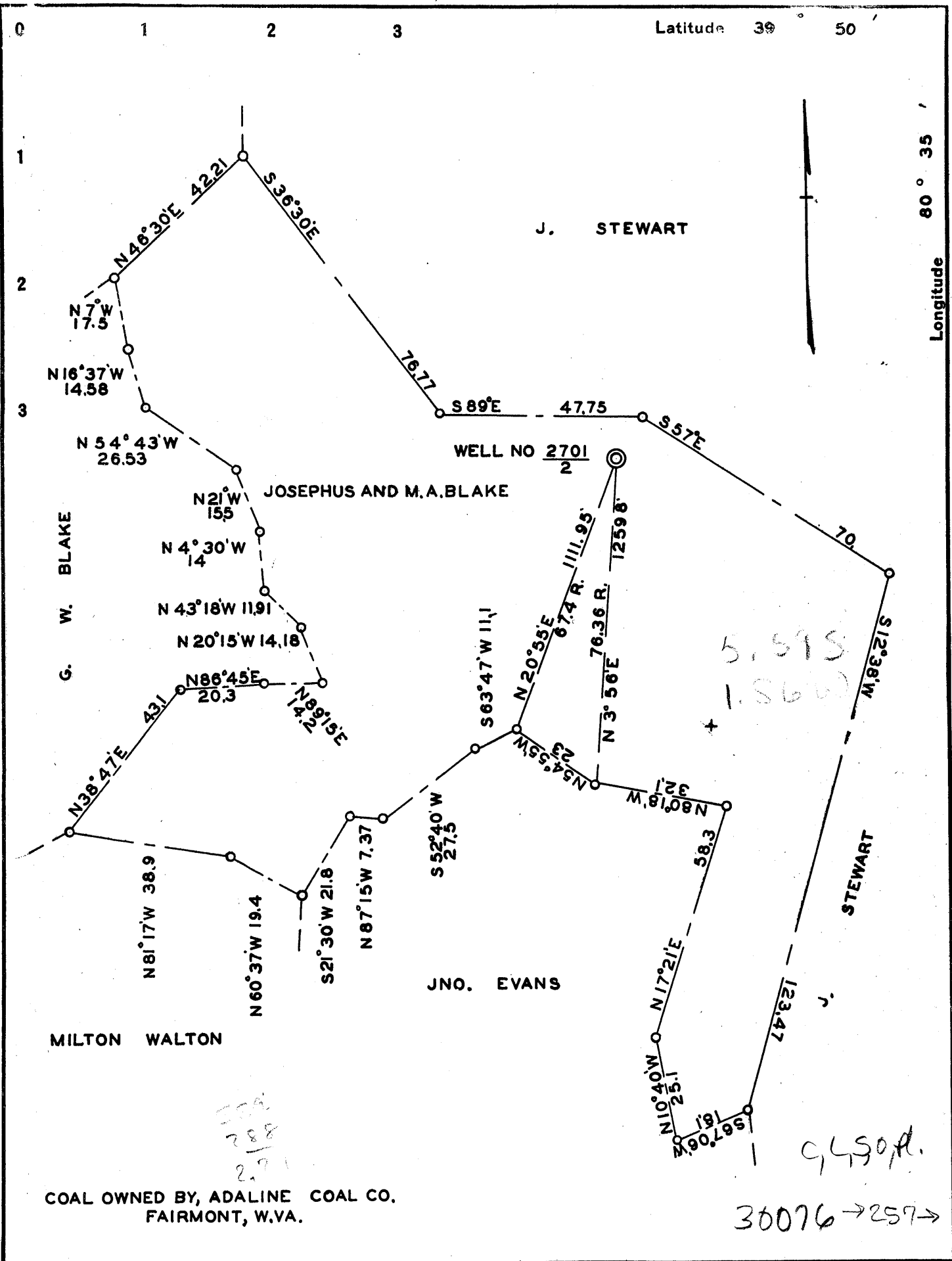
STATE OF WEST VIRGINIA
DEPARTMENT OF MINES
OIL AND GAS DIVISION
CHARLESTON

WELL LOCATION MAP
FILE NO. **Map-2298-2**

✦ Denotes location of well on United States Topographic Maps, scale 1 to 62,500, latitude and longitude lines being controlled by border lines as shown.

— Denotes one inch scale on drawing of original tracing.

MAY 30 1972



Company THE MANUFACTURERS LIGHT & HEAT CO.

Address PITTSBURGH, PA.

Farm JOSEPHUS AND M. A. BLAKE

Tract _____ Acres 50 Lease No. 2206

Well (Farm) No. 2 Serial No. 2701

Elevation (Spirit Level) 850.0'

Quadrangle CAMERON S.E.

County MARSHALL District LIBERTY

Engineer [Signature]

Engineer's Registration No. _____

File No. _____ Drawing No. Y-7-813

Date _____ Scale 1"=30 RODS

STATE OF WEST VIRGINIA
DEPARTMENT OF MINES
OIL AND GAS DIVISION
CHARLESTON

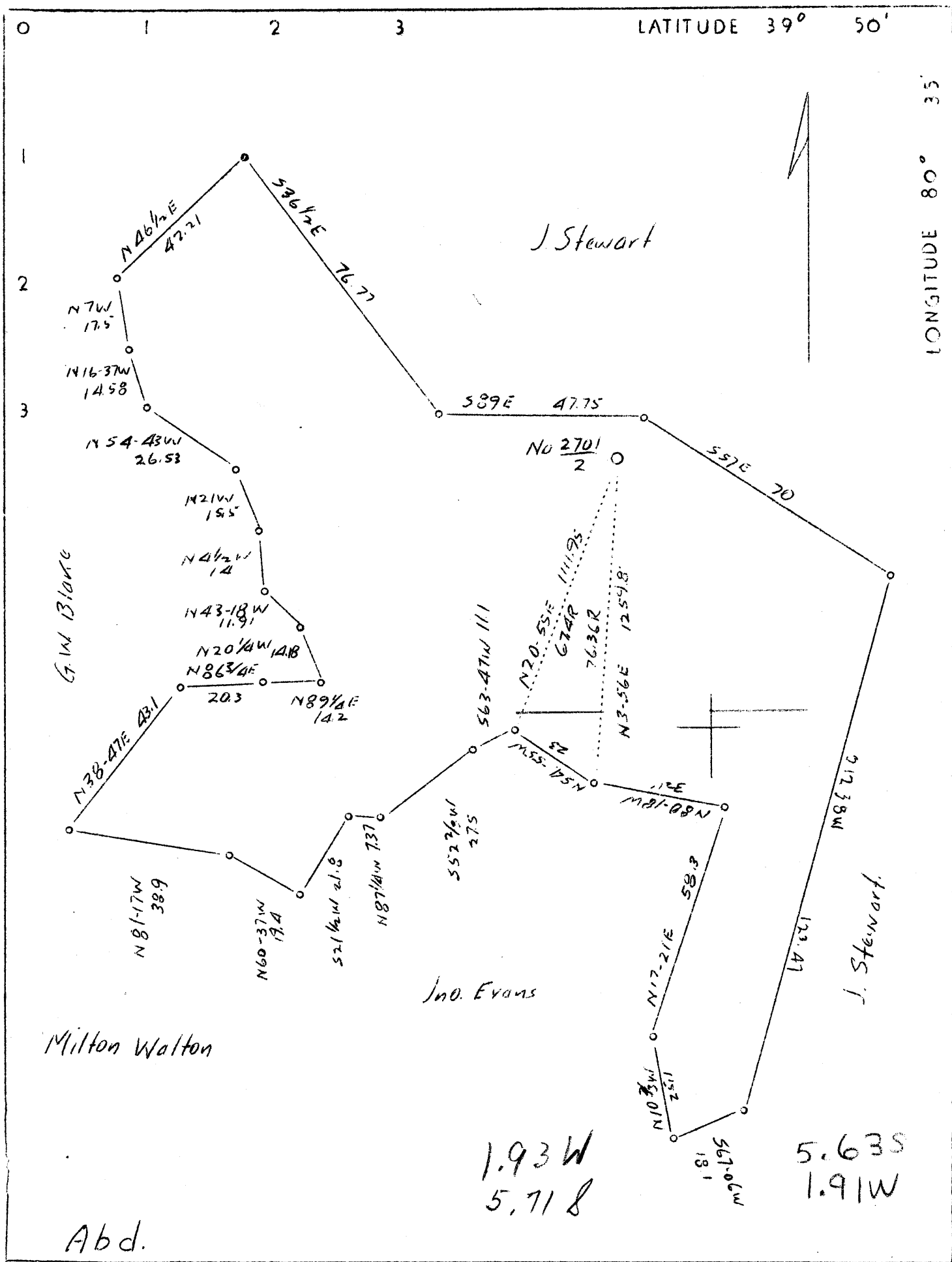
WELL LOCATION MAP

FILE NO. Mars-257-Storage

+ Denotes location of well on United States Topographic Maps, scale 1 to 62,500, latitude and longitude lines being represented by border lines as shown.

- Denotes one inch spaces on border line of original tracing.

9-0 25



| | | |
|-----------------------------|--|---|
| Company | The Manufacturers Light & Heat Co. | STATE OF WEST VIRGINIA |
| Address | Pittsburgh, Pa. | Department of Mines |
| Farm | Josephus & M.A. Blake | OIL AND GAS DIVISION |
| Tract | Acres 50 Lease No. 2206 | CHARLESTON |
| Well (Farm) | No. 2 Serial No. 2701 | WELL LOCATION MAP |
| Elevation (Spirit Level) | 850' | File No. <u>MARS-76A</u> |
| Quadrangle | Cameron 86 | + Denotes location of well on United States Topographic Maps, scale 1 to 62,500, latitude and longitude lines being represented by border lines as shown. |
| County | Marshall District Liberty | — Denotes one inch spaces on border line of original tracing. |
| Engineer | H.D.O'Connor | |
| Engineer's Registration No. | | |
| File No. | Drawing No. Y-7-813 | |
| Date | Scale 1"-30 Rods. | |



STATE OF WEST VIRGINIA
DEPARTMENT OF MINES
OIL AND GAS DIVISION

Storage

Quadrangle Cameron
Permit No. Mus-257-Redrill **WELL RECORD**

Oil or Gas Well Gas
(KIND)

Company THE MANUFACTURERS LIGHT AND HEAT COMPANY
Address 800 UNION TRUST BUILDING, PGH., PA.
Farm J. & M. A. Blake Acres 44
Location (waters) _____
Well No. 2701 Elev. 850'
District Liberty County Marshall
The surface of tract is owned in fee by _____
Address _____
Mineral rights are owned by _____
Address _____
Drilling commenced November 5, 1956
Drilling completed January 15, 1957
Date Shot _____ From _____ To _____
With _____
Open Flow _____ /10ths Water in _____ Inch
_____ /10ths Merc. in _____ Inch
Volume _____ Cu. Ft.
Rock Pressure _____ lbs. _____ hrs.
Oil _____ bbls., 1st 24 hrs.
Fresh water _____ feet
Salt water _____ feet

| Casing and Tubing | Used in Drilling | Left in Well | Packers |
|-------------------|------------------|--------------|----------------|
| Size | | | Kind of Packer |
| 16 | | | |
| 13 | | | |
| 10 | | 131' | Size of |
| 8 1/4 | | | |
| 8 3/8 7 | | 1519' | Depth set |
| 5 3/16 | | | |
| 3 | | | Perf. top |
| 2 | | | Perf. bottom |
| Liners Used | | | Perf. top |
| | | | Perf. bottom |

CASING CEMENTED _____ SIZE _____ No. Ft. _____ Date _____
COAL WAS ENCOUNTERED AT 537 FEET INCHES
_____ FEET INCHES FEET INCHES
_____ FEET INCHES FEET INCHES

| Formation | Color | Hard or Soft | Top | Bottom | Oil, Gas or Water | Depth Found | Remarks |
|--|-------|--------------|------|--------|--|-------------|---------|
| No gas to test. | | | | | | | |
| ✓ Pittsburgh Coal | | | 537 | 545 | Run 131' of 10 3/4" Csg, SM. Gr.H. 32# on a Steel shoe. not cemented. Run 1519' of 7" Csg., SM. Gr H. 30# on a steel shoe set at 1504'. Cemented with 2 bags of Aquagel and 325 bags of cement. Good return of cement at the surface. Run 1676' of 5 1/2" Csg. SM. Gr J. 17# on a steel shoe set at 1660'. Cemented with 1 bag of Aquagel and 125 bags of cement. Good return of cement at the surface. Cemented hole solid with cement from 2512' to 1920'. Washed sand down with 50 gallons of Mud Acid. | | |
| ✓ Maxton Sand | | | 1551 | 1568 | | | |
| ✓ Big Injun Sand | | | 1684 | 1931 | | | |
| Total Depth | | | | 1920 | | | |
| | | | | (375) | | | |
| Reconditioned for storage on W. O. No. 1651-L-1011-4 | | | | | | | |

*1650
850
200*

