

COAL OWNED BY BELTON FUEL COMPANY

NEW LOCATION.....
 DRILL DEEPER.....
 ABANDONMENT.....

COMPANY	UNION GASOLINE & OIL CORPORATION		
ADDRESS	WASHINGTON TRUST BLDG. WASHINGTON PA.,		
FARM	CATHERINE FRY		
TRACT	2	ACRES	26 1/2
LEASE No.	2168		
WELL (FARM) No.	1	SERIAL No.	U-77
ELEVATION (SPIRIT LEVEL)	913'		
QUADRANGLE	LITTLETON N.E. QUADRANGLE		
COUNTY	MARSHALL	DISTRICT	LIBERTY
ENGINEER	<i>H. E. Jarver</i>		
ENGINEER'S REGISTRATION No.			
FILE No.	DRAWING No. Y-11-10		
DATE	MARCH 1, 1944		
SCALE	1" = 400'		

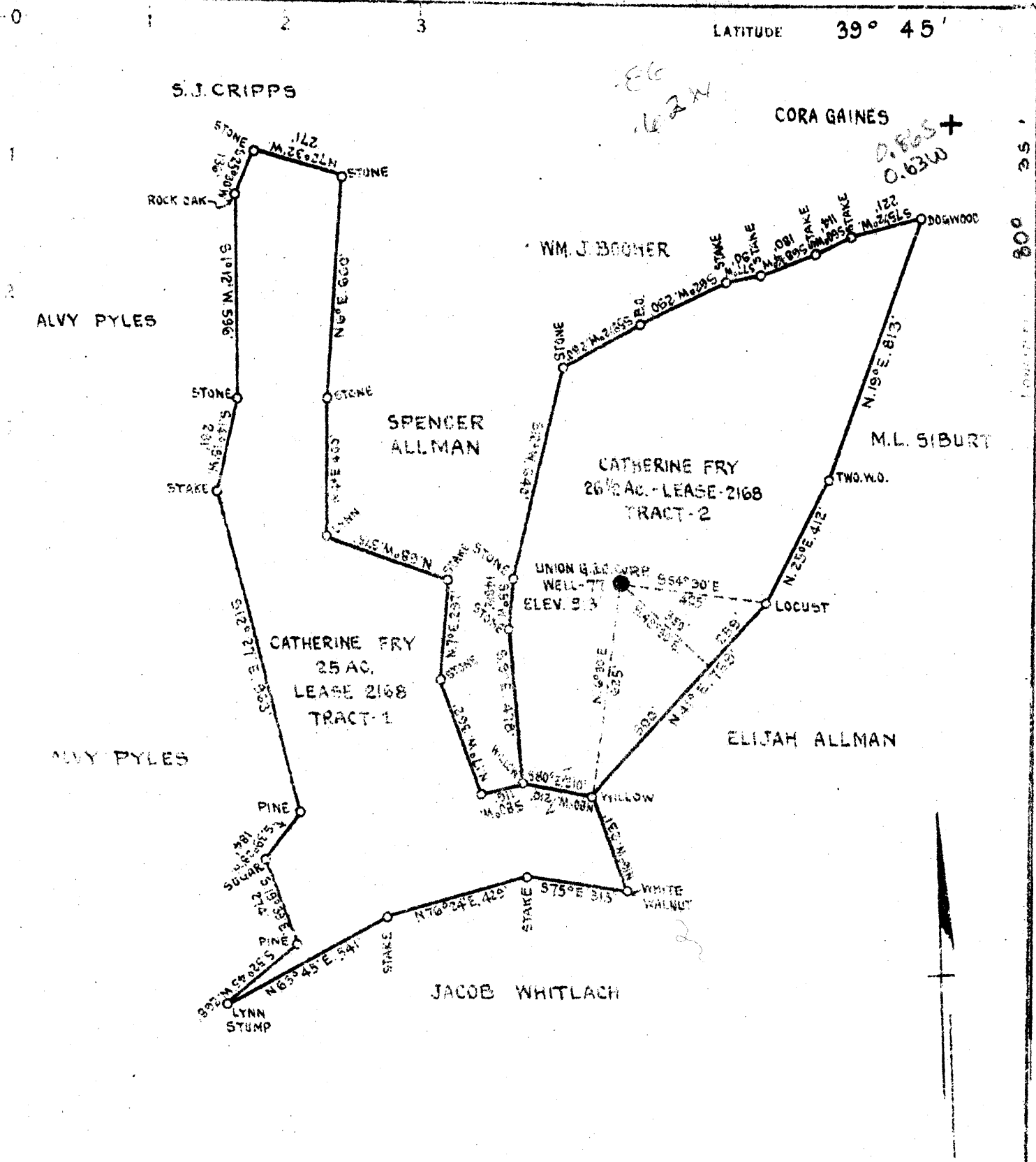
STATE OF WEST VIRGINIA
 DEPARTMENT OF MINES
 OIL AND GAS DIVISION
 CHARLESTON

WELL LOCATION MAP

FILE No. MARS-281-REDRILL
 NOW: WELL# 3025

+ DENOTES LOCATION OF WELL ON UNITED STATES TOPOGRAPHIC MAPS. SCALE 1 TO 62,500. LATITUDE AND LONGITUDE LINES BEING REPRESENTED BY BORDER LINES AS SHOWN
 — DENOTES ONE INCH SPACES ON BORDER LINE OF ORIGINAL TRACING.

30204
 C.P.O.P.



ALL OWNED BY BELTON FUEL COMPANY

W. LOCATION
 DEEPER
 POINT

UNION GASOLINE & OIL CORPORATION
 WASHINGTON TRUST BLDG. WASHINGTON PA.,
 CATHERINE FRY
 2 ACRES 26 1/2 LEASE NO. 2168
 1 FARM NO. 1 SERIAL NO. U-77
 ELEVATION (SPIRIT LEVEL) 913'
 QUADRANGLE LITTLETON N.E. QUADRANGLE
 COUNTY MARSHALL DISTRICT LIBERTY
 DRAWN BY R. E. Jarver
 OWNER'S RIGHT IN FLOW NO.
 DATE MARCH 1, 1944
 SCALE 1" = 400'

STATE OF WEST VIRGINIA
 DEPARTMENT OF MINES
 OIL AND GAS DIVISION
 CHARLESTON
 WELL LOCATION MAP
 FILE NO. MARS-204-A
 281 Redrill
 GENERAL LOCATION OF WELL ON UNITED STATES TOPOGRAPHIC MAPS SCALE 1" = 62 500'. LATITUDE AND LONGITUDE LINES BEING REPRESENTED BY BORDER LINES AS SHOWN.
 REPRESENTS ONE INCH SPACES ON BORDER LINE OF ORIGINAL TRACKS.



STATE OF WEST VIRGINIA
DEPARTMENT OF MINES
OIL AND GAS DIVISION

Quadrangle Scotts

Permit No. MARS-281-R

WELL RECORD

Oil or Gas Well Gas
(KIND)

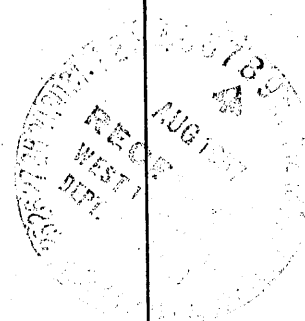
Company The Manufacturers Light and Heat Company
 Address 800 Union Trust Bldg., Pittsburgh, Pa.
 Farm C. and C.S. Frye Acres 64
 Location (waters) _____
 Well No. 3025 Elev. 913
 District Liberty County Marshall
 The surface of tract is owned in fee by _____
 Address _____
 Mineral rights are owned by _____
 Address _____
 Drilling commenced May 2, 1957
 Drilling completed July 22, 1957
 Date Shot _____ From _____ To _____
 With _____
 Open Flow _____ /10ths Water in _____ Inch
 _____ /10ths Merc. in _____ Inch
 Volume _____ Cu. Ft.
 Rock Pressure _____ lbs. _____ hrs.
 Oil _____ bbls., 1st 24 hrs.
 Fresh water _____ feet _____ feet
 Salt water _____ feet _____ feet

Casing and Tubing	Used in Drilling	Left in Well	Packers
Size			Kind of Packer
16			
13			
10"		255'	Size of
8 1/4"		1120'	
7"		1170'	Depth set
5 3/16			
3			Perf. top
2			Perf. bottom
Liners Used			Perf. top
			Perf. bottom

CASING CEMENTED _____ SIZE _____ No. Ft. _____ Date _____

COAL WAS ENCOUNTERED AT _____ FEET _____ INCHES
 _____ FEET _____ INCHES FEET _____ INCHES
 _____ FEET _____ INCHES FEET _____ INCHES

Formation	Color	Hard or Soft	Top	Bottom	Oil, Gas or Water	Depth Found	Remarks
Schlumberger Well Survey		Thickness					All pipe measured over threads
✓ Pittsburgh Coal		5	580	585			Located original 10" casing at 70'. Man- relled out the top of it and run 70' of 10 3/4" Casing, SM. Gr. #, 32#. Not cemented. Run 794' of 8 5/8" Casing, SM. J55, 21# on a steel shoe and set on top of 326' of original 8" casing. Cemented with 300 bags of cement and 5 bags of Aquagel. Good return of cement at surface. Run 1441' of 7" casing, 8 rd.-thd. 20#, used and 327' of 7" Casing, SM. J55. 20# on a steel shoe set at 1760' Cemented to surface with 200 bags. Set a Baker Plug at 2356' and filled hole solid with cement to 1997'.
✓ Big Lime			1674				
✓ Big Injun Sand				1997			
Total Depth				1997			
7" Shoe set at				375			
				1760			





STATE OF WEST VIRGINIA
DEPARTMENT OF MINES
OIL AND GAS DIVISION

259

204-A → 281
Permit No. Drilled in 1925

WELL RECORD

Oil or Gas Well Oil
(KIND)

Company Union Gasoline & Oil Corporation
Address 1032 Washington Trust Bldg., Washington Pa.
Farm Catherine Fry Acres 64
Location (waters) ?
Well No. 77 Elev. 913 ft.
District Liberty County Marshall
The surface of tract is owned in fee by Catherine Fry
Address Cameron, WVa
Mineral rights are owned by Union Gasoline & Oil Corp.
1032 Washington Trust Address Washington, Pa.
Drilling commenced 7/19/25
Drilling completed 8/27/25
Date Shot 9/3/25 From ? To ?
With ?

Casing and Tubing	Used in Drilling	Left in Well	Packers
Size			
16			Kind of Packer
18			
10	255'	255'	Size of
8 1/2	1120'	1120'	
6	1777'	1777'	Depth set
5 3/16			
3			Perf. top
2			Perf. bottom
Liners Used			Perf. top
			Perf. bottom

Open Flow /10ths Water in _____ Inch
/10ths Merc. in _____ Inch
Volume _____ Cu. Ft.
Rock Pressure _____ lbs. _____ hrs.
Oil _____ bbls., 1st 24 hrs.
Fresh water _____ feet _____ feet
Salt water _____ feet _____ feet

CASING CEMENTED _____ SIZE _____ No. Ft. _____ Date _____
COAL WAS ENCOUNTERED AT 275 FEET 36 INCHES
475 FEET 60 INCHES 570 FEET 72 INCHES
_____ FEET _____ INCHES _____ FEET _____ INCHES

Formation	Color	Hard or Soft	Top	Bottom	Oil, Gas or Water	Depth Found	Remarks
Waynesburg Coal			275	278	Water - 3 bailers per hr Show of gas		
Mapletown Coal			475	480			
Pittsburgh Coal			570	576			
Lime			576	625			
Red Rock			625	655			
Lime			655	725			
Sand			725	755			
Red Rock			755	800			
Lime			800	870			
Red Rock			870	955			
Rock - black			955	1005			
Lime			1005	1025			
Little Dunkard			1025	1045			
Rock - black			1045	1110			
Big Dunkard			1110	1140			
Lime			1140	1175			
Rock - black			1175	1190			
Lime			1190	1216			
Slate			1216	1228			
Lime			1228	1244			
Slate			1244	1280			
Lime			1280	1310			
Slate			1310	1345			
Lime			1345	1370			
Slate & Lime			1370	1410			
Lime			1410	1435			
Slate & Lime			1435	1493			
Sand			1493	1608			
Slate			1608	1640			
Lime & Slate			1640	1680			
Sand Maxon Sand			1680	1712			
Big Lime			1712	1755			
Big Injun			1755	2004			
Slate			2004	2110			
Sand			2110	2125			
Slate			2125	2135			
Lime			2135	2190			
Slate			2190	2255			

Formation	Color	Hard or Soft	Top	Bottom	Oil, Gas or Water	Depth Found	Remarks
Lime			2255	2270			
Slate			2270	2314			
Slate & Lime			2314	2390			
Sand			2390	2400			
Slate & Lime			2400	2450			
Red Rock			2450	2465			
Lime			2465	2505			
Sand			2505	2511			
Slate & Lime			2511	2538			
Sand			2538	2568			
Slate			2568	2590			
Gordon Sand			2590	2608	Oil	2593 - 2600	
Slate			2608	2625			
4th Sand			2625	2643			
Slate			2643	2653			
5th Sand			2653	2662	Gas	2654 - 2660	
Total depth				2675			

Date March 3rd, 1944

APPROVED UNION GASOLINE & OIL CORPORATION, Owner

By Harry H. Fowler
Land Agent. (Title)