

WW-7  
8-30-06



West Virginia Department of Environmental Protection  
Office of Oil and Gas

**WELL LOCATION FORM: GPS**

API: 47-051-00270 WELL NO.: 4272

FARM NAME: Steele, Ida (WV DEP records)

RESPONSIBLE PARTY NAME: Columbia Gas Transmission

COUNTY: Marshall DISTRICT: Webster

QUADRANGLE: Majorsville, WV

SURFACE OWNER: MarkWest Liberty Midstream & Resources, LLC

ROYALTY OWNER: Richard E. Steele et al (storage lease 3022047-001)

UTM GPS NORTHING: 4423084.53 m 1060.4 ft

UTM GPS EASTING: 540690.14 m GPS ELEVATION: 323.21 m

The Responsible Party named above has chosen to submit GPS coordinates in lieu of preparing a new well location plat for a plugging permit or assigned API number on the above well. The Office of Oil and Gas will not accept GPS coordinates that do not meet the following requirements:

1. Datum: NAD 1983, Zone: 17 North, Coordinate Units: meters, <sup>Altitude:</sup> height above mean sea level (MSL) – meters.
2. Accuracy to Datum – 3.05 meters
3. Data Collection Method:

Survey grade GPS  : Post Processed Differential

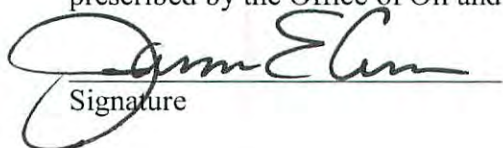
Real-Time Differential

Mapping Grade GPS  : Post Processed Differential

Real-Time Differential

4. **Letter size copy of the topography map showing the well location.**

I the undersigned, hereby certify this data is correct to the best of my knowledge and belief and shows all the information required by law and the regulations issued and prescribed by the Office of Oil and Gas.

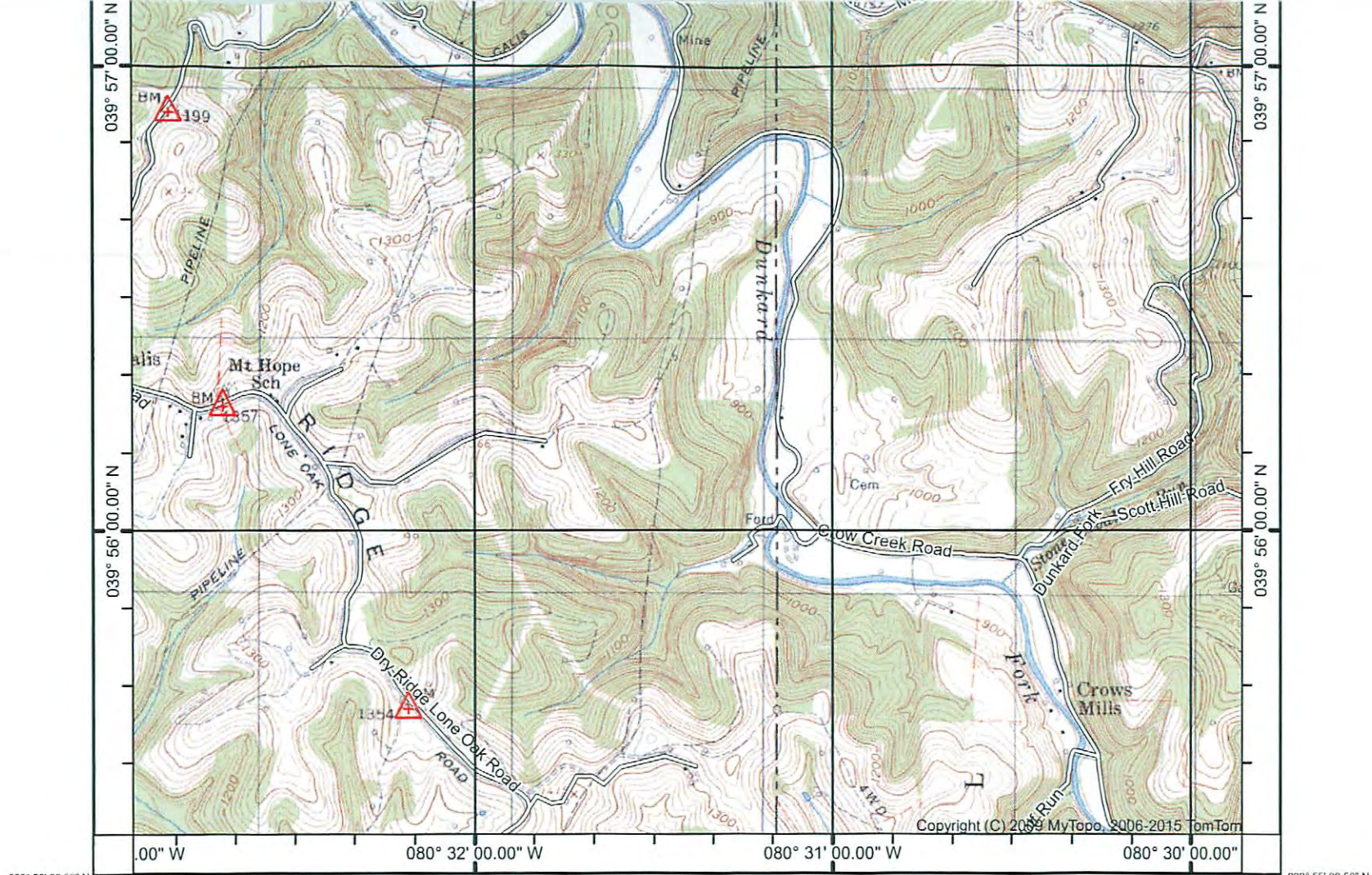
  
Signature

Senior Well Services Engineer

Title

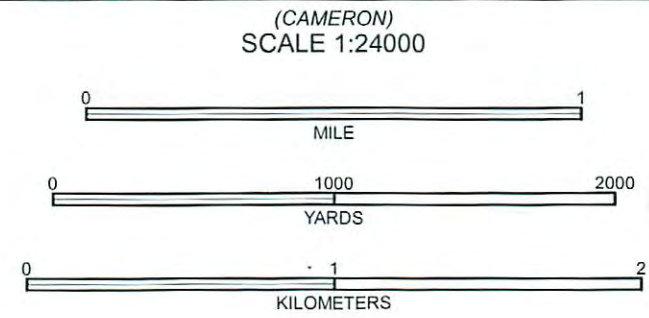
RECEIVED  
Office of Oil and Gas  
JAN 25 2016  
7/20/15  
Date

WV Department of Environmental Protection  
\*0.1 m accuracy horizontal & vertical



039° 57' 00.00" N  
 039° 56' 00.00" N  
 039° 55' 20.58" N  
 080° 32' 00.00" W  
 080° 31' 00.00" W  
 080° 29' 50.89" W  
 080° 32' 57.61" W  
 Printed: Wed Jul 01, 2015  
 Copyright (C) 2009 MyTopo, 2006-2015 TomTom

(GLEN EASTON)  
 WV Department of Environmental Protection  
 Office of Air and Gas  
 Produced by MyTopo Terrain Navigator  
 Topography based on USGS 1:24,000 Maps  
 World Geodetic System 1984 Datum (WGS84)  
 Lambert Conformal Conic Projection  
 To place on the predicted North American 1927 move the  
 projection lines 9M N and 17M E  
 5/2016



CONTOUR INTERVAL 20 FEET  
 NATIONAL GEODEIC VERTICAL DATUM 1929

(NEW FREEPORT)  
 MAJORSVILLE, WV  
 1997