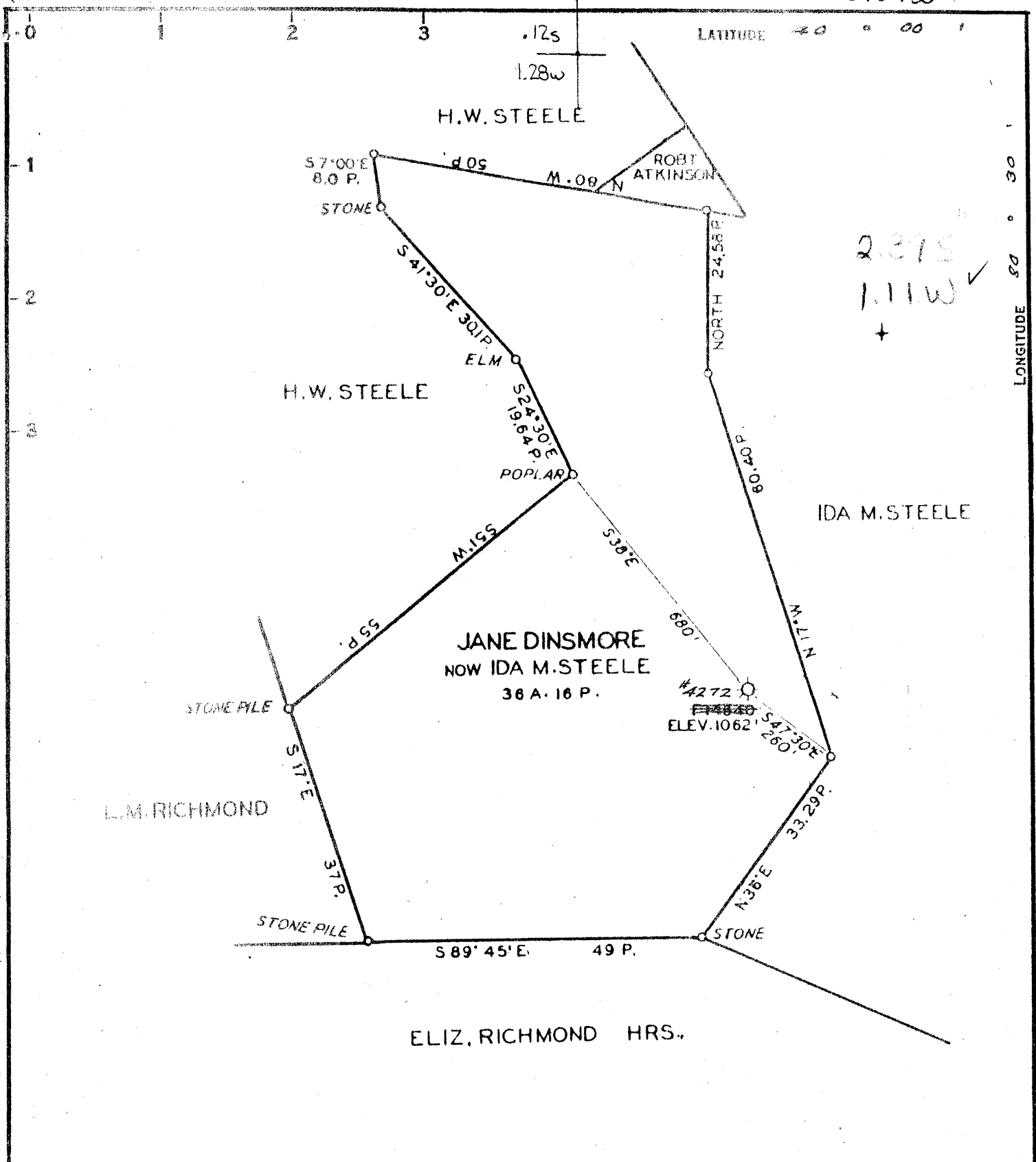


39 57' 30"



2.37 S  
1.11 W  
+

30128

COAL OWNED BY \_\_\_\_\_  
 Reconditioned for Storage \*  
 NEW LOCATION   
 DRILL DEEPER   
 ABANDONMENT

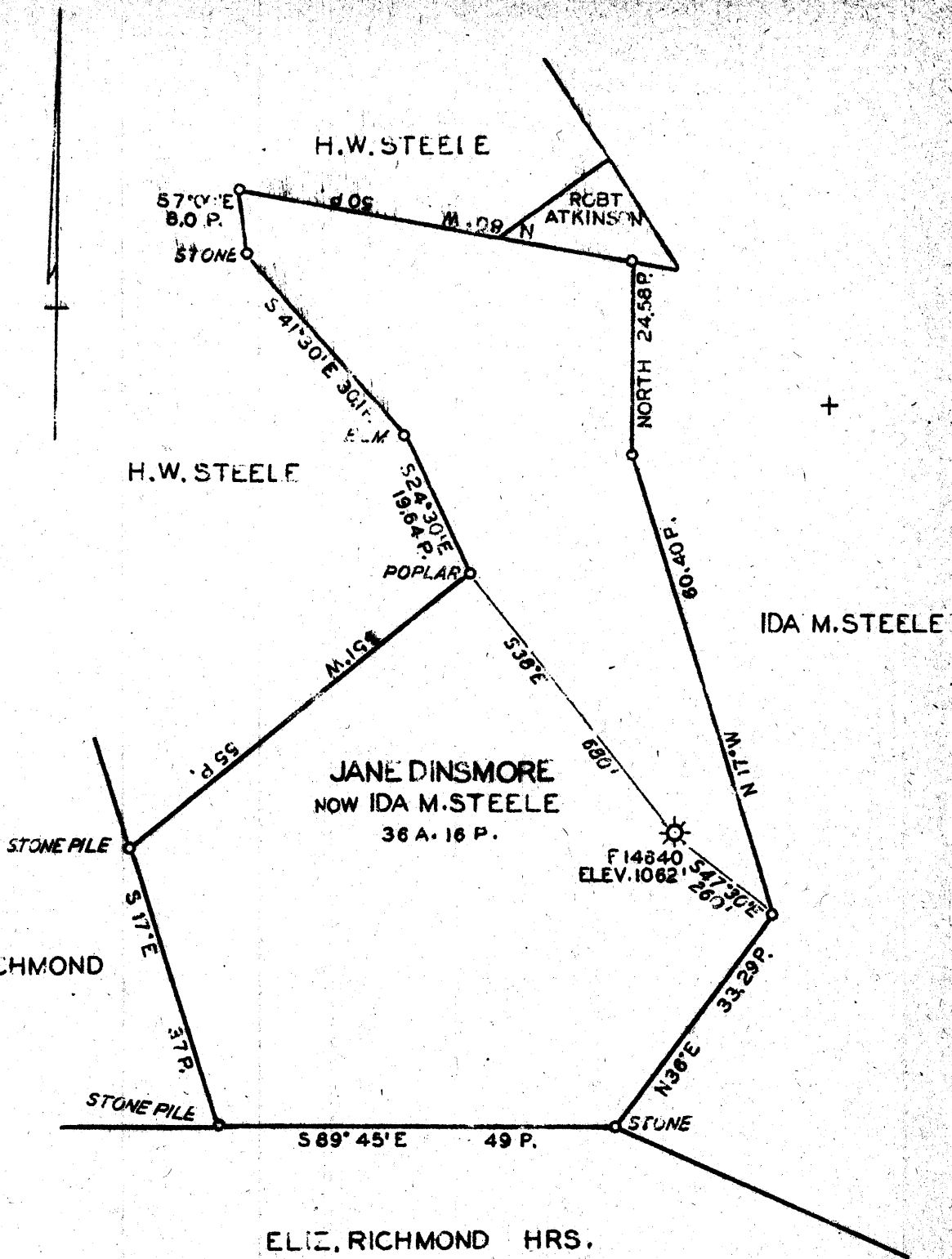
COMPANY The Manufacturers Light & Heat Co.  
 ADDRESS 800 Union Trust Bldg. Pgh. Pa.  
 FARM Ida M. Steele  
 TRACT \_\_\_\_\_ ACRES 36-16 P. LEASE NO. 22047  
 WELL (FARM) NO. 1 SERIAL NO. 4272  
 ELEVATION (SPIRIT LEVEL) 1062'  
 QUADRANGLE Cameron  
 COUNTY Marshall DISTRICT Webster  
 ENGINEER G. J. Russell - J.M.  
 ENGINEER'S REGISTRATION NO. \_\_\_\_\_  
 FILE NO. \_\_\_\_\_ DRAWING NO. 4-15-62  
 DATE 2 Aug. 54 SCALE 1" = 20 R. - 330'

STATE OF WEST VIRGINIA  
 DEPARTMENT OF MINES  
 OIL AND GAS DIVISION  
 CHARLESTON

### WELL LOCATION MAP

FILE NO. MARS-270-Redrill

+ DENOTES LOCATION OF WELL ON UNITED STATES TOPOGRAPHIC MAPS, SCALE 1 TO 62,500. LATITUDE AND LONGITUDE LINES BEING REPRESENTED BY BORDER LINES AS SHOWN.  
 - DENOTES ONE INCH SPACES ON BORDER LINE OF ORIGINAL TRACING.



3.00S  
1.35W  
1.37W  
3.04P

New Location   
 Drill Deeper   
 Abandonment

ABANDONED GAS WELL  
 DRILLED BY CITY & SUBURBAN GAS CO.  
 TO BE PLUGGED

APR 30 1940

Company THE MANUFACTURERS LIGHT & HEAT CO  
 Address 800 UNION TRUST BLDG. PITTSBURGH PA.  
 Farm JANE DINSMORE  
 Tract 1 Acres 36 A. 16 P. Lease No.  
 Well (Farm) No. 1 Serial No. F 14840  
 Elevation (Spirit Level) 1062'  
 Quadrangle CAMERON N.E.  
 County MARSHALL District WEBSTER  
 Engineer *C. J. Marshall*  
 Engineer's Registration No.  
 File No. Drawing No. Y-8 647  
 Date APR 12, 1940 Scale 1" = 20000'

STATE OF WEST VIRGINIA

DEPARTMENT OF MINES  
 OIL AND GAS DIVISION  
 CHARLESTON

WELL LOCATION MAP

File No. MARS-128A 270

— Denotes location of well on United States Topographic Maps, scale 1 to 62,500, latitude and longitude lines being represented by border lines as shown.

— Denotes one inch spaces on border line of original tracing



STATE OF WEST VIRGINIA  
DEPARTMENT OF MINES  
OIL AND GAS DIVISION

WELL RECORD

*Storage*

Oil or Gas Well Gas  
(KIND)

Permit No. MARS-270-R

Company THE MANUFACTURERS LIGHT AND HEAT COMPANY

Address 800 Union Trust Bldg., Pgh., Penna.

Farm Ida M. Steele Acres 36

Location (waters) \_\_\_\_\_

Well No. 4272 Elev. 1062'

District Webster County Marshall

The surface of tract is owned in fee by \_\_\_\_\_

Address \_\_\_\_\_

Mineral rights are owned by \_\_\_\_\_

Address \_\_\_\_\_

Drilling commenced May 21, 1953

Drilling completed May 11, 1954

Date Shot From \_\_\_\_\_ To \_\_\_\_\_

With \_\_\_\_\_

Open Flow 26 10ths Water in \_\_\_\_\_ 1 \_\_\_\_\_ Inch

\_\_\_\_\_ /10ths Merc. in \_\_\_\_\_ Inch

Volume 39,960 Cu. Ft.

Rock Pressure 550 lbs. 24 hrs.

Oil \_\_\_\_\_ bbls., 1st 24 hrs.

Fresh water \_\_\_\_\_ feet \_\_\_\_\_ feet

Salt water \_\_\_\_\_ feet \_\_\_\_\_ feet

Casing and Tubing	Used in Drilling	Left in Well	Packers
Size			Kind of Packer
16			
13	164'		
10	528'		Size of
8 1/2	845'		
6 1/2	1204'		Depth set
5 3/16	1660'		
3			Perf. top
2			Perf. bottom
Liners Used			Perf. top
			Perf. bottom

CASING CEMENTED \_\_\_\_\_ SIZE \_\_\_\_\_ No. Ft. \_\_\_\_\_ Date \_\_\_\_\_

COAL WAS ENCOUNTERED AT 501 FEET \_\_\_\_\_ INCHES

\_\_\_\_\_ FEET \_\_\_\_\_ INCHES \_\_\_\_\_ FEET \_\_\_\_\_ INCHES

\_\_\_\_\_ FEET \_\_\_\_\_ INCHES \_\_\_\_\_ FEET \_\_\_\_\_ INCHES

Formation	Color	Hard or Soft	Top	Bottom	Oil, Gas or Water	Depth Found	Remarks
✓ Pittsburgh Coal			501	507	13" cemented	in with 125	bag cement
✓ Little Dunkard			824		10" cemented	in with 170	bag cement
✓ Big Dunkard			1042		8" cemented	in with 150	bag cement
✓ Gas Sand			1137		7" cemented	in with 130	bag cement
✓ Salt Sand			1279		5" cemented	in with 125	bag cement
✓ 2nd Gas Sand			1372				
✓ 3rd Gas Sand			1461				
✓ Maxon Sand			1513				
✓ Big Injun Sand			1605				
✓ Fifty Foot			2360				
Total Depth			<u>414</u>	2377	<u>1605</u> <u>1062</u> <u>51 543</u>	<u>1062</u> <u>501</u> <u>260</u>	

1062  
501  
581

