

COAL OWNED BY _____
 Storage
 NEW LOCATION
 DRILL DEEPER
 ABANDONMENT -1-25-71

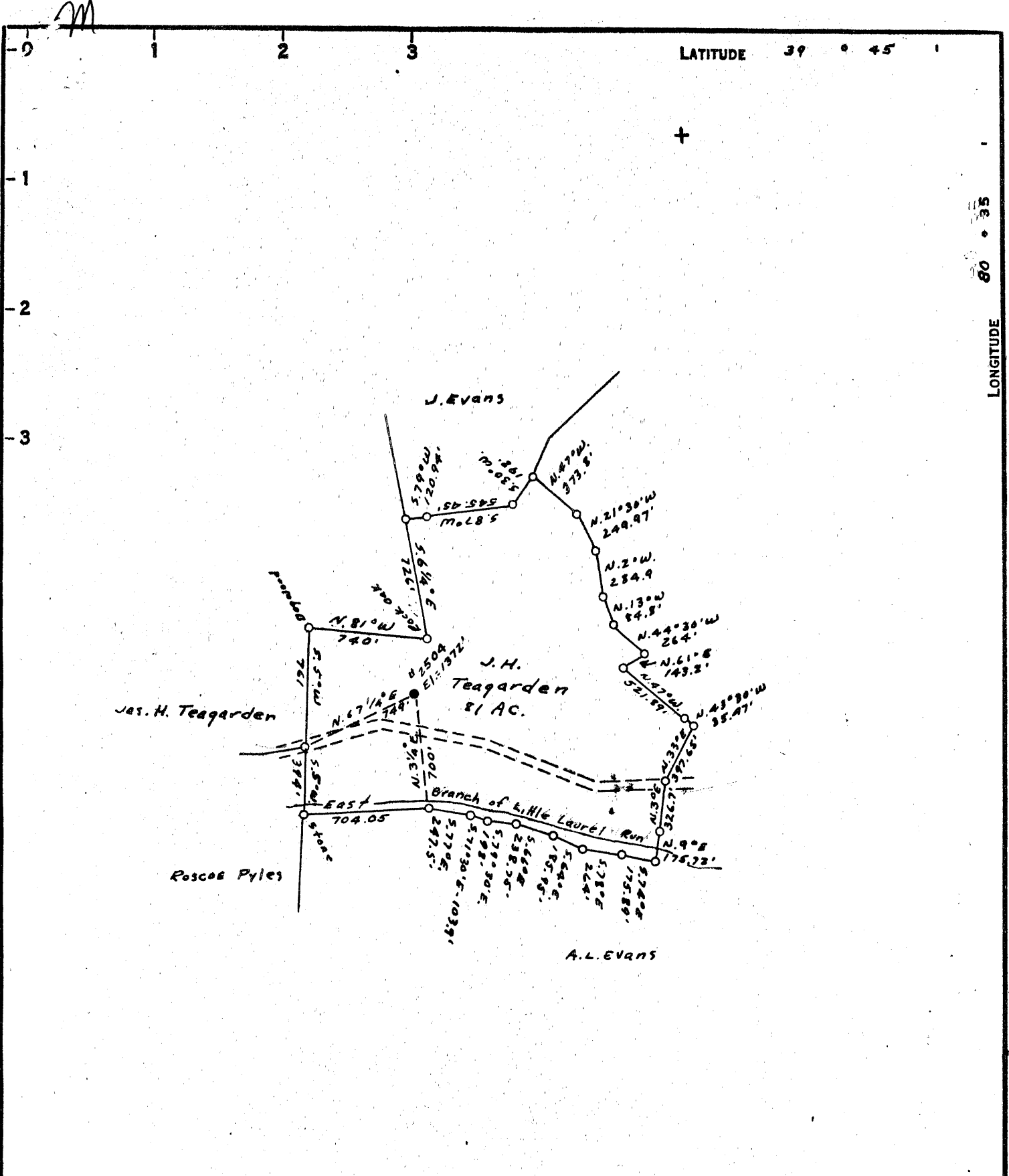
COMPANY The Manufacturers Light & Heat Co.
 ADDRESS 800 Union Trust Bldg. Pgh. Pa.
 FARM J.H. Teagarden
 TRACT _____ ACRES 87.36 LEASE NO. 26483
 WELL (FARM) NO. 1 SERIAL NO. 2504
 ELEVATION (SURFACE LEVEL) 1372'
 QUADRANGLE Littleton NC
 COUNTY Marshall DISTRICT Liberty
 ENGINEER Thomas E. Vargen - J.M.
 ENGINEER'S REGISTRATION NO. 1503
 FILE NO. _____ DRAWING NO. Y-13-986
 DATE 10 May 1954 SCALE 1" = 800'

STATE OF WEST VIRGINIA
 DEPARTMENT OF MINES
 OIL AND GAS DIVISION
 CHARLESTON

WELL LOCATION MAP

FILE NO. MARS-263-Redrill

+ DENOTES LOCATION OF WELL ON UNITED STATES TOPOGRAPHIC MAPS, SCALE 1 TO 62,500, LATITUDE AND LONGITUDE LINES BEING REPRESENTED BY BORDER LINES AS SHOWN.
 - DENOTES ONE INCH SPACES ON BORDER LINE OF ORIGINAL TRACING.



COAL OWNED BY _____
 Storage
 NEW LOCATION.....
 DRILL DEEPER.....
 ABANDONMENT.....

COMPANY The Manufacturers Light & Heat Co.
 ADDRESS 800 Union Trust Bldg. Pgh. Pa.
 FARM J.H. Teagarden
 TRACT _____ ACRES 67.36 LEASE No. 26483
 WELL (FARM) No. 1 SERIAL No. 2504
 ELEVATION (SPIRIT LEVEL) 1372'
 QUADRANGLE Littleton
 COUNTY Marshall DISTRICT Liberty
 ENGINEER Thomas E. Vargin - J.M.
 ENGINEER'S REGISTRATION No. 1503
 FILE No. _____ DRAWING No. V-13-986
 DATE 10 May 1954 SCALE 1" = 800'

STATE OF WEST VIRGINIA
 DEPARTMENT OF MINES
 OIL AND GAS DIVISION
 CHARLESTON

WELL LOCATION MAP

FILE No. MARS-263-REDRILL

+ DENOTES LOCATION OF WELL ON UNITED STATES TOPOGRAPHIC MAPS, SCALE 1 TO 62,500, LATITUDE AND LONGITUDE LINES BEING REPRESENTED BY BORDER LINES AS SHOWN.
 - DENOTES ONE INCH SPACES ON BORDER LINE OF ORIGINAL TRACING.



STATE OF WEST VIRGINIA
DEPARTMENT OF MINES
OIL AND GAS DIVISION

Littleton

WELL RECORD

MARS-
Permit No. 263-R

Oil or Gas Well Stor.
(KIND)

Company THE MANUFACTURERS LIGHT AND HEAT COMPANY
Address 800 UNION TRUST BUILDING, PGH., PENNA.
Farm J. H. & L. Teagarden Acres 100
Location (waters) _____
Well No. 1-2504 Elev. 1372'
District Liberty County Marshall
The surface of tract is owned in fee by _____
Address _____
Mineral rights are owned by _____
Address _____
Drilling commenced July 7, 1954
Drilling completed December 18, 1954
Date Shot _____ From _____ To _____
With _____
Open Flow _____ /10ths Water in _____ Inch
_____ /10ths Merc. in _____ Inch
Volume Not sufficient gas to test Cu. Ft.
Rock Pressure 65 lbs. 7 day. _____ hrs.
Oil _____ bbls., 1st 24 hrs.
Fresh water _____ feet _____ feet
Salt water _____ feet _____ feet

| Casing and Tubing | Used in Drilling | Left in Well | Packers |
|-------------------|------------------|--------------|----------------------|
| Size | | | |
| 16 | | | Kind of Packer _____ |
| 18 | | | |
| 10 | | 277' | Size of _____ |
| 8 1/4 | | 1476' | |
| 6 5/8 | 7 | 2085' | Depth set _____ |
| 5 3/16 | | | |
| 3 | | | Perf. top _____ |
| 2 | | | Perf. bottom _____ |
| Liners Used | | | Perf. top _____ |
| | | | Perf. bottom _____ |

CASING CEMENTED _____ SIZE _____ No. Ft. _____ Date _____
COAL WAS ENCOUNTERED AT 1055 FEET _____ INCHES
_____ FEET _____ INCHES FEET _____ INCHES
_____ FEET _____ INCHES FEET _____ INCHES

| Formation | Color | Hard or Soft | Top | Bottom | Oil, Gas or Water | Depth Found | Remarks |
|--------------------|-------|--------------|---------------------|--------|-------------------|-------------|---|
| ✓Pittsburgh Coal | | | 1055 | 1062 | | | All pipe measured over threads |
| ✓Maxton Sand | | | 2071 | 2086 | | | |
| ✓Big Injun | | | 2208 | 2448 | | | Run 1200' of new 8-5/8" on 276' of old 8 1/4" casing. Connected with an 8-5/8" steel die nipple. Pumped 250 bags cement between 8 and 10". No return to surface. |
| Filled with cement | | | 2440 | 2448 | | | Filled from surface with 80 bags cement. |
| Set Lead Plug | | | 2437 | 2440 | | | Fished out old 6-5/8" casing to depth of 2095'. Left in hole 71' casing and shoe. |
| Filled with cement | | | 2208 | 2437 | | | Filled hole with 125 bags cement to depth of 2086', Run 2085' of new 7" 23# casing on steel shoe set at 2071'. Pumped 245 bags cement between 7" and 8", good return to surface. Filled around 10" casing with 38 bags cement. Cave was cemented with 175 bags. Contractors tools cemented in at about 2123' (1 - 28' Ste and 1 set L.S. Jars) also 1 - Spang reversible Ripper, Company #L-1154-L. |
| Set Lead Plug | | | 2205 | 2208 | | | |
| Filled with cement | | | 2086 | 2205 | | | |
| Total Depth | | | 2086 | | | | |
| 7" Casing set at | | | | 2071 | | | |
| | | | 2208 1372 836 | | | | |

