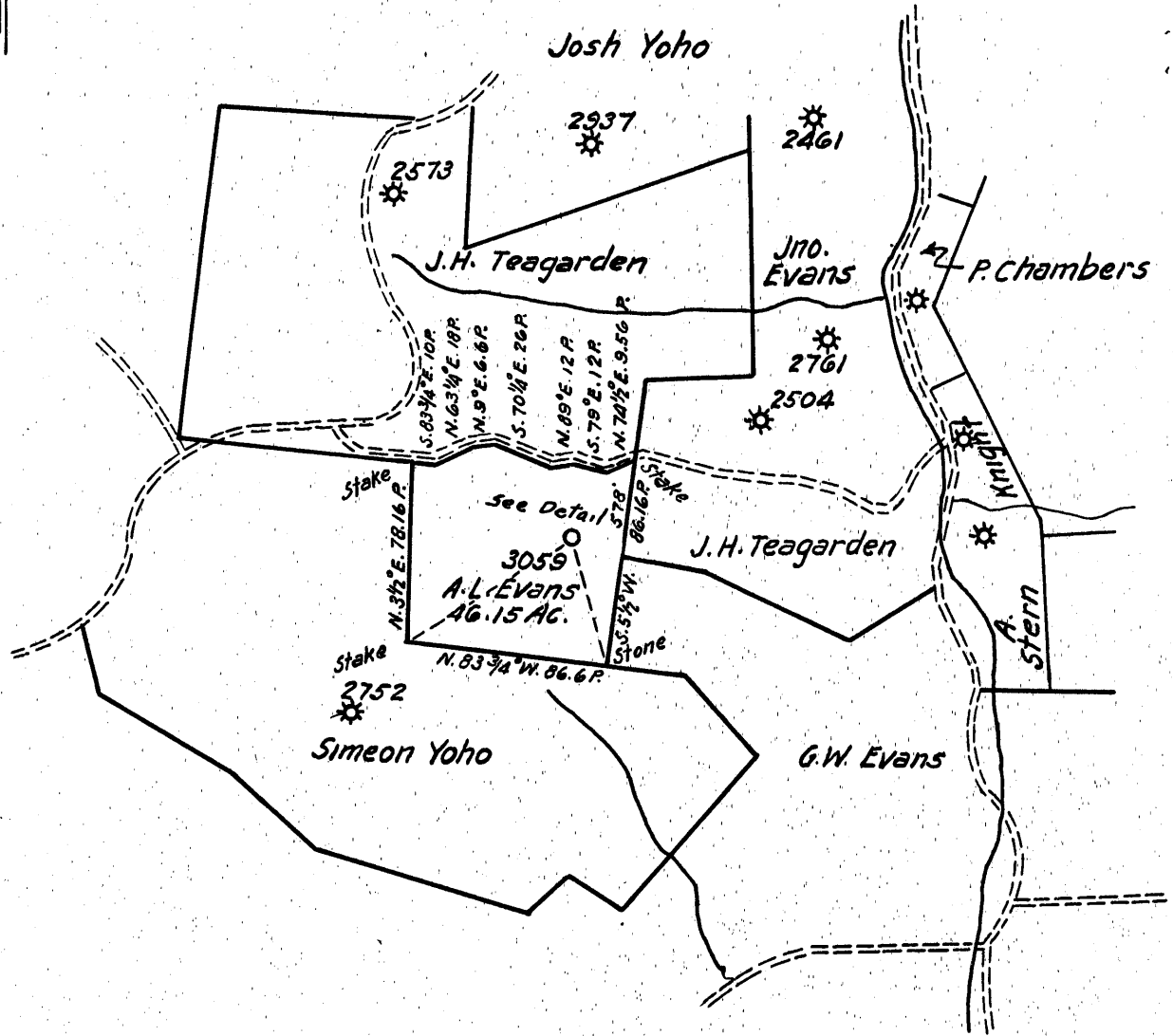
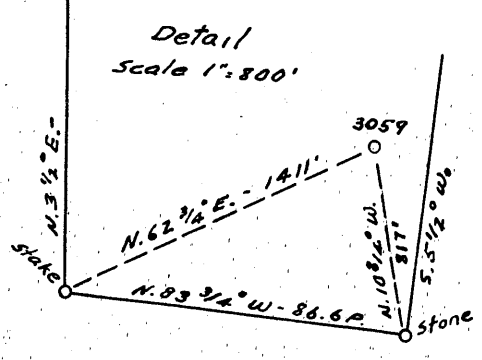


LATITUDE 39° 45'

DELC.08 803.30

LONGITUDE 80° 35'

103 SV
234 W



.98s
.14w

COAL OWNED BY T.L. Rogerson, 703 Fifth St
Moundsville W. Va.

NEW LOCATION.....
DRILL DEEPER.....
ABANDONMENT.....

30326

COMPANY The Manufacturers Light & Heat Co.
 ADDRESS 800 Union Trust Building Pittsburgh Pa.
 FARM A.L. Evans NOW: Geo. N. Yoho
 TRACT _____ ACRES 46.15 LEASE NO. 2178
 WELL (FARM) NO. 1 SERIAL NO. 3059
 ELEVATION (SPRING LEVEL) 1240'
 QUADRANGLE Littleton
 COUNTY Marshall W. Va. DISTRICT Liberty
 ENGINEER Robert M. Heil
 ENGINEER'S REGISTRATION NO. 361-E
 FILE NO. _____ DRAWING NO. Y-13-504
 DATE May 1, 1951 SCALE 1" = 1320'

STATE OF WEST VIRGINIA
DEPARTMENT OF MINES
OIL AND GAS DIVISION
CHARLESTON

WELL LOCATION MAP

FILE NO. MARS-261-REDRILL

+ DENOTES LOCATION OF WELL ON UNITED STATES TOPOGRAPHIC MAPS. SCALE 1 TO 62,500. LATITUDE AND LONGITUDE LINES BEING REPRESENTED BY BORDER LINES AS SHOWN.
- DENOTES ONE INCH SPACES ON BORDER LINE OF ORIGINAL TRACING.

9-036



STATE OF WEST VIRGINIA
DEPARTMENT OF MINES
OIL AND GAS DIVISION

Littleton

WELL RECORD

Permit No. MARS-261-R

Oil or Gas Well Str.
(KIND)

Company THE MANUFACTURERS LIGHT AND HEAT COMPANY
Address 800 Union Trust Building, Pgh., Penna.
Farm George N. Yoho Acres 46
Location (waters) _____
Well No. 3059 Elev. 1240'
District Liberty County Marshall
The surface of tract is owned in fee by _____
Address _____
Mineral rights are owned by _____
Address _____
Drilling commenced November 6, 1954
Drilling completed February 7, 1955
Date Shot _____ From _____ To _____
With _____

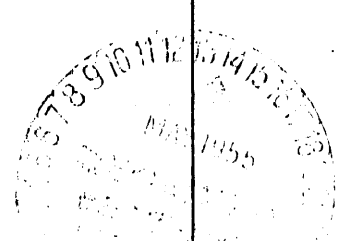
Casing and Tubing	Used in Drilling	Left in Well	Packers
Size			Kind of Packer
16			
13			
10		320	Size of
8 1/4		1609	
8 1/8	7	2083	Depth set
5 3/16			
3			Perf. top
2			Perf. bottom
Liners Used			Perf. top
			Perf. bottom

Open Flow _____ /10ths Water in _____ Inch
_____ /10ths Merc. in _____ Inch
Volume No gas to test Cu. Ft.
Rock Pressure _____ lbs. _____ hrs.
Oil _____ bbls., 1st 24 hrs.
Fresh water _____ feet _____ feet
Salt water _____ feet _____ feet

CASING CEMENTED _____ SIZE _____ No. Ft. _____ Date _____

COAL WAS ENCOUNTERED AT 755 FEET _____ INCHES
963 FEET _____ INCHES 1060 FEET _____ INCHES
_____ FEET _____ INCHES _____ FEET _____ INCHES

Formation	Color	Hard or Soft	Top	Bottom	Oil, Gas or Water	Depth Found	Remarks
Waynesburg, Coal			755	760			
Mapletown Coal			963	967			
Pittsburgh Coal			1060	1065			
Maxon Sand			2065	2083			
Total Depth			2083				
				<u>325</u>			
					Run 320' of 10-3/4" H40, 32.75# casing on a steel shoe. Run 1137' of 8-5/8" J55, 24# casing and connected it to 472' of original casing with a Steel Die Nipple. Cemented between the 8" and 10" with 300 bags cement. Good return to surface.		
					Run 2083' of 7", J55, 20# casing on a steel shoe set at 2065'. Cemented between the 7" and 8" with 225 bags cement. Good return to surface. Used 150 bags cement in cave and filling up hole to 2083'.		





STATE OF WEST VIRGINIA
DEPARTMENT OF MINES
OIL AND GAS DIVISION

404

Permit No. MARS-26 ^{Red} 326-A → 261 ~~1122~~ **WELL RECORD** Oil or Gas Well _____ (KIND)

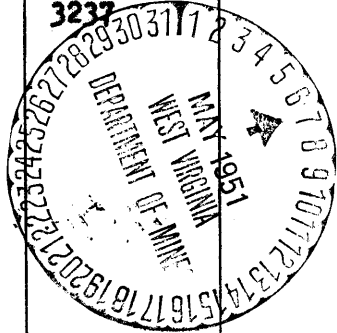
Company The Manufacturers Light & Heat Company
Address 800 Union Trust Bldg., Pittsburgh, Pa.
Farm A. L. Evans Acres 50
Location (waters) _____
Well No. 1-3059 Elev. _____
District Liberty County Marshall
The surface of tract is owned in fee by Mary B. Teagarden
Phillipsburg, Kansas Address _____
Mineral rights are owned by The Mfrs. Light & Heat Co.
800 Union Trust Bldg. Address Pittsburgh, Pa.
Drilling commenced January 9, 1926
Drilling completed February 16, 1926
Date Shot _____ From _____ To _____
With _____
Open Flow _____ /10ths Water in _____ Inch
_____ /10ths Merc. in _____ Inch
Volume _____ Cu. Ft.
Rock Pressure _____ lbs. _____ hrs.
Oil _____ bbls., 1st 24 hrs.
Fresh water _____ feet _____ feet
Salt water _____ feet _____ feet

Casing and Tubing	Used in Drilling	Left in Well	Packers
Size			Kind of Packer
16			
13			
10	300	300	Size of
8 1/4	1617	1617	8-1/4" X 6-5/8"
6 1/2	1975	1975	Depth set 1925'
5 3/16			
3			Perf. top
2			Perf. bottom
Liners Used			Perf. top
			Perf. bottom

CASING CEMENTED _____ SIZE _____ No. Ft. _____ Date _____

COAL WAS ENCOUNTERED AT 755 FEET 60 INCHES
963 FEET 48 INCHES FEET INCHES
FEET INCHES FEET INCHES

Formation	Color	Hard or Soft	Top	Bottom	Oil, Gas or Water	Depth Found	Remarks	
Clay, Slate & Lime			0	540				
Bluff Sand			540	560				
Waynesburg Coal			755	760				
Mapletown Coal			963	967				
Pittsburgh Coal			1060	1065				
Little Dunkard			1470	1520				
Big Dunkard			1606	1641				
First Salt Sand			1936	1958			Gas 1945 to 1955, Open Flow Test 8/10 Mercury in a 3" Opg.	
TOTAL DEPTH				1958				
				1 min. 15#	2 min. 30#	3 min. 45#	4 min. 60#	5 min. 75#
COMMENTED AT			1958				Second Open Flow Test 8/10 Water in a 3" Opg. Turned in fuel line & Utilized 5-00 P. M. Feb. 19, 1926.	
Salt Sand			1958	1980				
Slate & Shells			1980	2100				
Maxon			2100	2170				
Big Lime			2170	2238				
Big Injun			2238	2470				
Fifty Foot			2980	2992				
Gordon			3049	3074				
Fourth Sand			3105	3119			Gas 3108-3110	
Fifth Sand			3185	3191				
TOTAL DEPTH			3237					



FEB 17 1926

→ 261

Liberty District, Marshall County, W. Va.
 By The Manufacturers Light & Heat Co., 800 Union Trust Bldg., Pittsburgh, Pa.
 Abandoned under permit Mers-.....-47
 On 50 acres.

Elevation, L.
 Surface owned by Mary B. Teagarden, Phillipsburg, Kansas, and minerals by
 The Manufacturers Light & Heat Co., 800 Union Trust Bldg., Pittsburgh, Pa.
 Drilling commenced Jan. 9, 1926; completed Feb. 16, 1926. Later deepened
 but date not given.

10" casing, 300'; 8 1/2", 1617'; 6 3/4", 1975'; all left in.
 Packer, 8 1/2" x 6 3/4", set at 1925'.

Original total depth 1958; gas, 1945-1955', open flow test, 8/10 Mers. in 3".
 1 min. 2 min. 3 min. 4 min. 5 min.
 15# 30# 45# 60# 75#

Second open flow test, 8/10 W. in 3" opg. Turned in fuel line and
 utilized 5:00 p. m. Feb. 19, 1926.

Gas well. Record to Dept. of Mines dated May 4, 1951.
 Record to RGT from Mrs. Griffith Feb. 11, 1953. O.P.No.404.

	Top.	Bottom.
Clay, slate and lime	0	540
Bluff Sand	540	560
Waynesburg Coal	755	760
Mapletown (Sewickley) Coal	963	967
Pittsburgh Coal	1060	1065
Little Dunkard Sand	1470	1520
Big Dunkard Sand	1606	1641
First Salt Sand	1936	1958
Total depth		1958
DISCONTINUED:		
Commenced at		1958
Salt Sand	1958	1980
Slate and shells	1980	2100
Maxton Sand	2100	2170
Big Lime	2170	2238
Big Injun Sand	2238	2470
Fifty-foot Sand	2980	2992
Gordon Sand	3049	3074
Fourth Sand (gas, 3108-3110')	3105	3119
Fifth Sand	3185	3191
Total depth		3237

1958
 1279